

UNITED STATES  
DEPARTMENT OF THE INTERIOR  
BUREAU OF LAND MANAGEMENT

**SUNDRY NOTICES AND REPORTS ON WELLS**

Do not use this form for proposals to drill or to deepen or reentry to a different reservoir.  
Use "APPLICATION FOR PERMIT—" for such proposals

**SUBMIT IN TRIPLICATE**

1. Type of Well

☐ Oil Well ☒ Gas Well ☐ Other

2. Name of Operator

CONOCO INC.

3. Address and Telephone No

10 DESTA DR. STE. 100W, MIDLAND, TX. 79705-4500 (915) 686-5424

4. Location of Well (Footage, Sec., T., R., M., or Survey Description)

1490' FSL, 1480' FWL, Sec. 25, T28N, R7W

FORM APPROVED  
Budget Bureau No. 1004-0135  
Expires: March 31, 1993

5. Lease Designation and Serial No.

SF 079294

6. If Indian, Allottee or Tribe Name

7. If Unit or CA, Agreement Designation

San Juan Unit 28-7

8. Well Name and No.

222

9. API Well No.

30-039-21003

10. Field and Pool, or Exploratory Area

Mesaverde

11. County or Parish, State

Rio Arriba, NM

CHECK APPROPRIATE BOX(S) TO INDICATE NATURE OF NOTICE, REPORT, OR OTHER DATA

TYPE OF SUBMISSION

- ☒ Notice of Intent  
☐ Subsequent Repon  
☐ Final Abandonment Notice

TYPE OF ACTION

- ☐ Abandonment  
☒ Recompletion  
☐ Plugging Back  
☐ Casing Repair  
☐ Altering Casing  
☐ Other

- ☐ Change of Plans  
☐ New Construction  
☐ Non-Routine Fracuring  
☐ Water Shut-Off  
☐ Conversion to Injection  
☐ Dispose Water

(Note: Repon results of multiple completion on Wdl Completion or Recompletion Report and Log form.)

13. Describe Proposed or Completed Operations (Clearly state all pertinent details, and give pertinent dates, including estimated date of starting any proposed work. If well is directionally drilled, give subsurface locations and measured and true vertical depths for all markers and zones pertinent to this work.)\*

It is proposed to recomplete this well to the Mesaverde by the following procedure:

1. Set CIBP at 5730' to isolate Dakota perforations.
2. Perforate Point Lookout/Menefee from 5328' - 5691', 19 total holes; treat with 500 gals 15% HCL and frac.
3. Set CIBP at 5290', perforate Cliffhouse/Menefee from 4961' - 5255', 28 total holes; treat with 500 gals 15% HCL and frac.
4. Drill out all CIBPs, clean out well to PBTD and put on production.

Application for Down Hole Commingling of Mesaverde and Dakota has previously been submitted.

14. I hereby certify that the foregoing is true and correct

Signed

Title

Jerry W. Hoover

Sr. Conservation Coordinator

Date

3-4-97

(This space for Federal or State office use)

Approved by

/s/ Duane W. Spence

Title

Date

MAR 21 1997

Conditions of approval if any:

BLM(6), JWH,

FILE ROOM

Title 18 U.S.C. Section 1001, makes it a crime for any person knowingly and willfully to make to any department or agency of the United States any false, fictitious or fraudulent statements or representations as to any matter within its jurisdiction.

\*See Instruction on Reverse Side

44000

District I  
PO Box 1980, Hobbs, NM 88241-1980

District II  
PO Drawer DD, Artesia, NM 88211-0719

District III  
1000 Rio Brazos Rd. Aztec, NM 87410

District IV  
PO Box 2088, Santa Fe, NM 87504-2088

State of New Mexico  
Energy, Minerals & Natural Resources Department

OIL CONSERVATION DIVISION  
PO Box 2088  
Santa Fe, NM 87504-2088

Form C-102

Revised February 21, 1994

instructions on back

Submit to Appropriate District Office

State Lease - 4 Copies

Fee Lease - 3 Copies

☐ AMENDED REPORT

### WELL LOCATION AND ACREAGE DEDICATION PLAT

API Number 30-039-21003		2 Pool Code 72319		3 Pool Name Mesaverde	
4 Property Code 016608		5 Property Name San Juan 28-7 Unit			6 Well Number 222
7 OGRID No. 005073		8 Operator Name Conoco Inc., 10 Desta Drive, Ste. 100W, Midland, TX 79705-4500			9 Elevation 6174

#### 10 Surface Location

UL or lot no. K	Section 25	Township 28N	Range 7W	Lot Idn	Feet from the 1490	North/South line S	Feet from the 1480	East/West line W	County Rio Arriba
--------------------	---------------	-----------------	-------------	---------	-----------------------	-----------------------	-----------------------	---------------------	----------------------

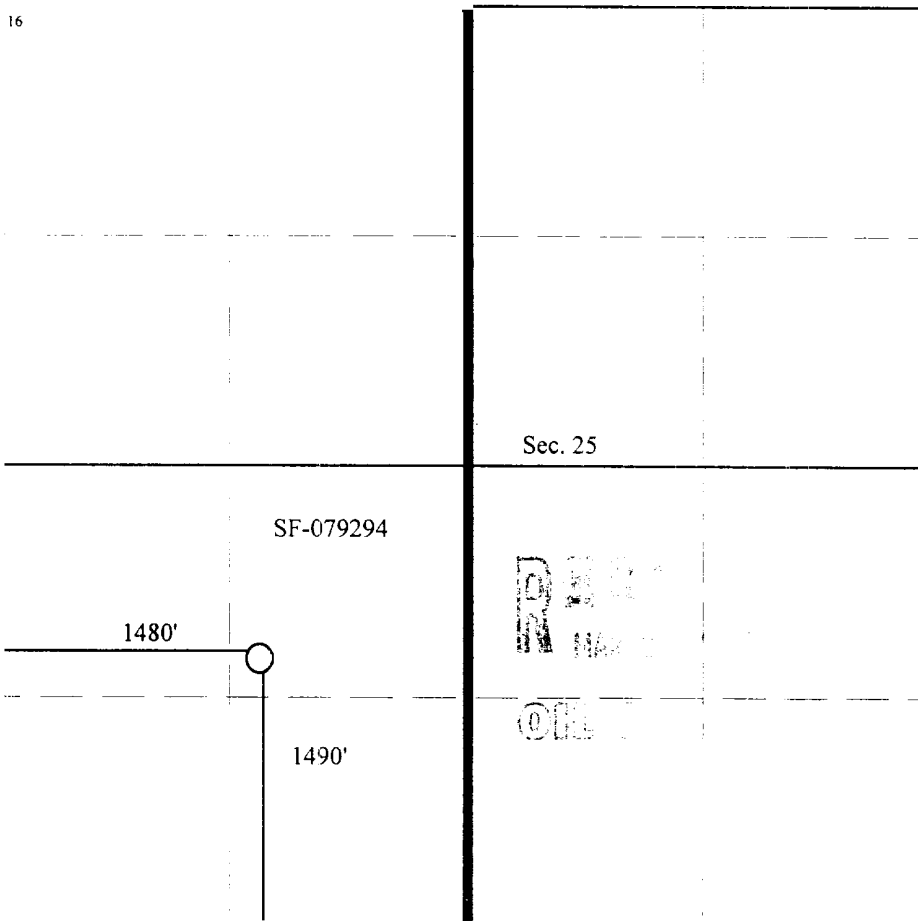
#### 11 Bottom Hole Location If Different From Surface

UL or lot no.	Section	Township	Range	Lot Idn	Feet from the	North/South line	Feet from the	East/West line	County
---------------	---------	----------	-------	---------	---------------	------------------	---------------	----------------	--------

12 Dedicated Acres 320.00	13 Joint or Infill	14 Consolidation Code	15 Order No.
------------------------------	--------------------	-----------------------	--------------

NO ALLOWABLE WILL BE ASSIGNED TO THIS COMPLETION UNTIL ALL INTERESTS HAVE BEEN CONSOLIDATED  
OR A NON-STANDARD UNIT HAS BEEN APPROVED BY THE DIVISION

16



#### 17 OPERATOR CERTIFICATION

I hereby certify that the information contained herein is true and complete to the best of my knowledge and belief

Signature  
Jerry W. Hoover

Printed Name  
Sr. Cons. Coordinator, Conoco Inc.

Title  
March 4, 1997

Date

#### 18 SURVEYOR CERTIFICATION

I hereby certify that the well location shown on this plat was plotted from field notes of actual surveys made by me or under my supervision, and that the same is true and correct to the best of my belief.

Date of Survey  
Signature and Seal of Professional Surveyor:

Certificate Number