

UNITED STATES  
DEPARTMENT OF THE INTERIOR  
GEOLOGICAL SURVEY

30-039-21017

## APPLICATION FOR PERMIT TO DRILL, DEEPEN, OR PLUG BACK

## 1a. TYPE OF WORK

DRILL ☒DEEPEN ☐PLUG BACK ☐

## b. TYPE OF WELL

OIL  
WELL ☐GAS  
WELL ☒

OTHER

SINGLE  
ZONE ☒MULTIPLE  
ZONE ☐

## 2. NAME OF OPERATOR

El Paso Natural Gas Company

## 3. ADDRESS OF OPERATOR

PO Box 990, Farmington, NM 87401

## 4. LOCATION OF WELL (Report location clearly and in accordance with any State requirements.)

At surface

1460'N, 820'W

At proposed prod. zone

## 14. DISTANCE IN MILES AND DIRECTION FROM NEAREST TOWN OR POST OFFICE\*

## 15. DISTANCE FROM PROPOSED\*

LOCATION TO NEAREST  
PROPERTY OR LEASE LINE, FT.  
(Also to nearest drlg. unit line, if any)18. DISTANCE FROM PROPOSED LOCATION\*  
TO NEAREST WELL, DRILLING, COMPLETED,  
OR APPLIED FOR, ON THIS LEASE, FT.

## 21. ELEVATIONS (Show whether DF, RT, GR, etc.)

6301'GL

## 16. NO. OF ACRES IN LEASE

17. NO. OF ACRES ASSIGNED  
TO THIS WELL

152.86

## 19. PROPOSED DEPTH

2992'

## 20. ROTARY OR CABLE TOOLS

Rotary

## 22. APPROX. DATE WORK WILL START\*

## 23.

## PROPOSED CASING AND CEMENTING PROGRAM

SIZE OF HOLE	SIZE OF CASING	WEIGHT PER FOOT	SETTING DEPTH	QUANTITY OF CEMENT
12 1/4"	8 5/8"	24.0#	120'	106 cu. ft. to circulate
6 3/4"	2 7/8"	6.4#	2992'	314 cu. ft. to cover Ojo Alamo

Selectively perforate and sandwater fracture the Pictured Cliffs formation.

The NW/4 of Section 30 is dedicated to this well.

IN ABOVE SPACE DESCRIBE PROPOSED PROGRAM: If proposal is to deepen or plug back, give data on present productive zone and proposed new productive zone. If proposal is to drill or deepen directionally, give pertinent data on subsurface locations and measured and true vertical depths. Give blowout preventer program, if any.

## 24.

SIGNED

*A. G. Duico*

TITLE

Drilling Clerk

DATE

September 5, 1974

(This space for Federal or State office use)

PERMIT NO.

APPROVAL DATE

APPROVED BY

TITLE

DATE

CONDITIONS OF APPROVAL, IF ANY:

*OK*

\*See Instructions On Reverse Side

SEP 10 1974  
U.S. GEOLOGICAL SURVEY  
DENVER, COLO.

**NEW MEXICO OIL CONSERVATION COMMISSION  
WELL LOCATION AND ACREAGE DEDICATION PLAT**

Form C-102  
Supersedes C-128  
Effective 1-1-65

All distances must be from the outer boundaries of the Section.

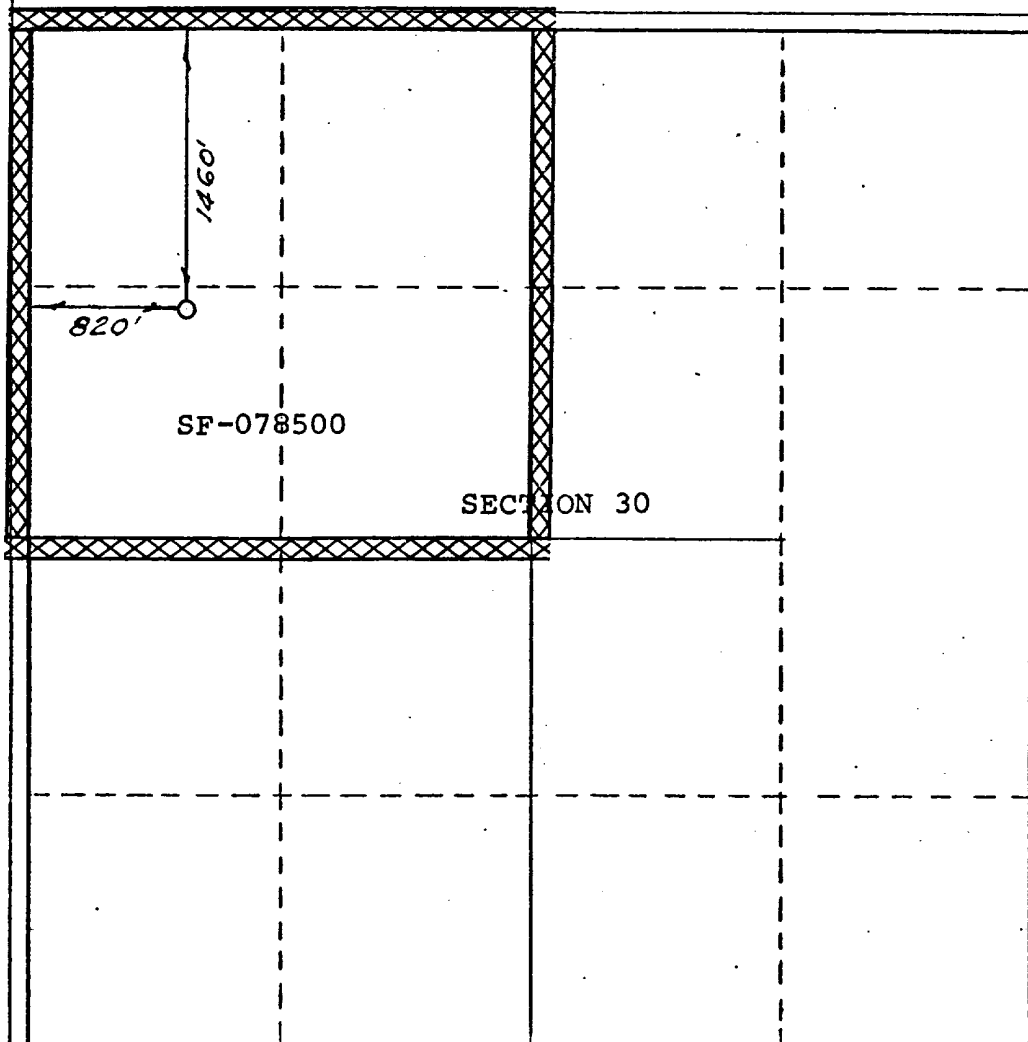
Operator <b>EL PASO NATURAL GAS COMPANY</b>			Lease <b>SAN JUAN 28-7 UNIT (SF-078500)</b>		Well No. <b>200</b>
Unit Letter <b>E</b>	Section <b>30</b>	Township <b>28-N</b>	Range <b>7-W</b>	County <b>RIO ARRIBA</b>	
Actual Footage Location of Well: <div style="display: flex; justify-content: space-between;"> <span><b>1460</b> feet from the <b>NORTH</b> line and</span> <span><b>820</b> feet from the <b>WEST</b> line</span> </div>					
Ground Level Elev. <b>6301</b>	Producing Formation <b>PICTURED CLIFFS</b>	Pool <b>SO. BLANCO PICTURED CLIFFS</b>	Dedicated Acreage: <b>152.86</b> Acres		

1. Outline the acreage dedicated to the subject well by colored pencil or hachure marks on the plat below.
2. If more than one lease is dedicated to the well, outline each and identify the ownership thereof (both as to working interest and royalty).
3. If more than one lease of different ownership is dedicated to the well, have the interests of all owners been consolidated by communitization, unitization, force-pooling, etc?

☐ Yes   ☐ No   If answer is "yes," type of consolidation \_\_\_\_\_

If answer is "no," list the owners and tract descriptions which have actually been consolidated. (Use reverse side of this form if necessary.) \_\_\_\_\_

No allowable will be assigned to the well until all interests have been consolidated (by communitization, unitization, forced-pooling, or otherwise) or until a non-standard unit, eliminating such interests, has been approved by the Commission. **NOTE: THIS PLAT IS REISSUED TO SHOW CORRECTED DEDICATION. 7-25-74**



**CERTIFICATION**

I hereby certify that the information contained herein is true and complete to the best of my knowledge and belief.

Original Signed by

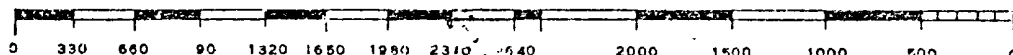
Name **D. G. Brisco**  
**Griffin, Clerk**  
 Position  
**El Paso Natural Gas Co.**  
 Company  
**September 5, 1974**  
 Date

I hereby certify that the well location shown on this plat was plotted from field notes of actual surveys made by me or under my supervision, and that the same is true and correct to the best of my knowledge and belief.

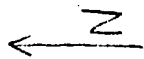
Date Surveyed  
**JULY 22, 1974**

Registered Professional Engineer  
and/or Land Surveyor

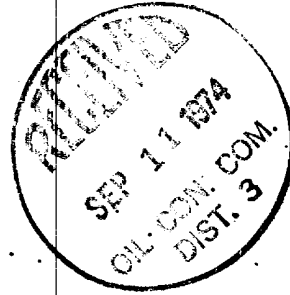
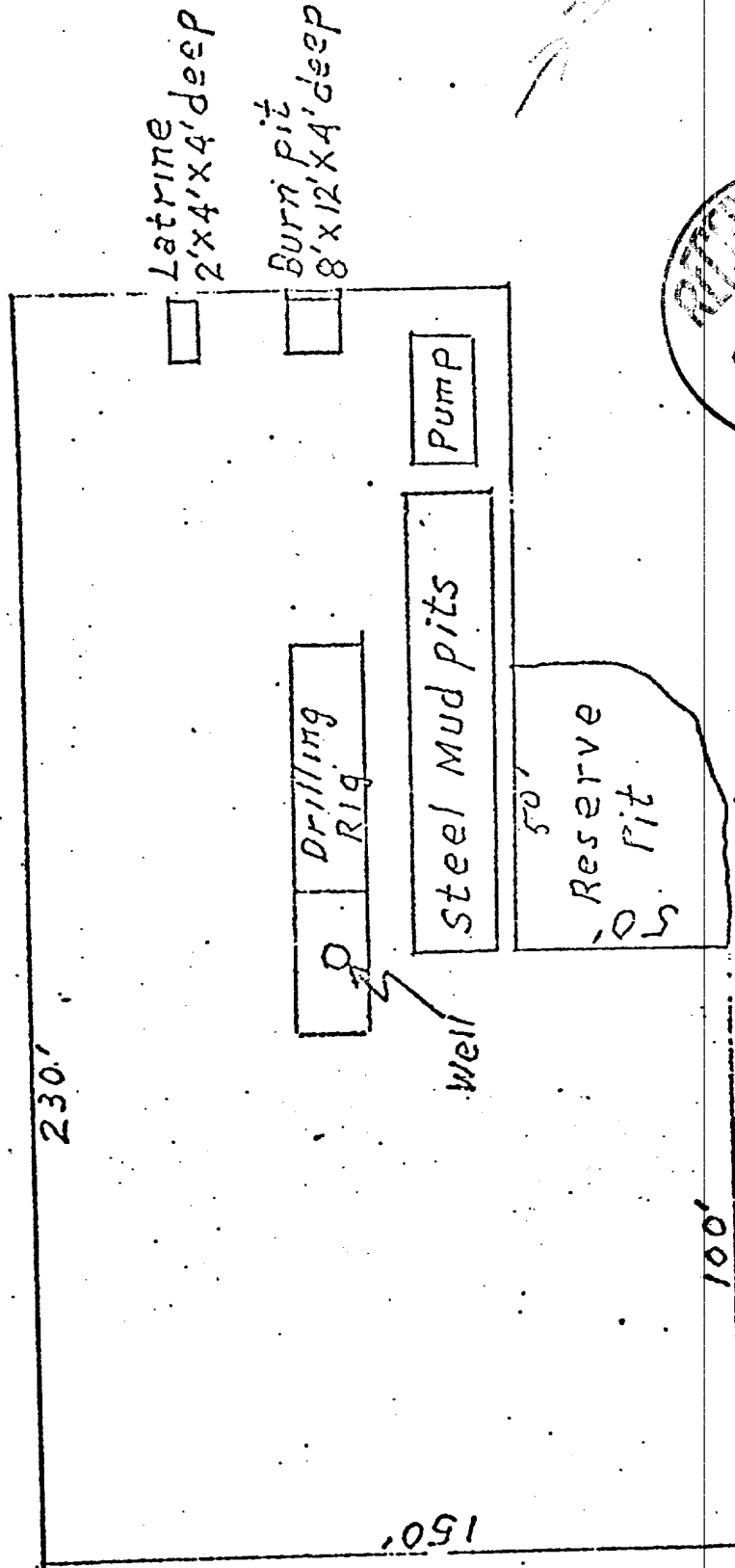
*Paul Wilburn*  
 Certificate No. **1760**



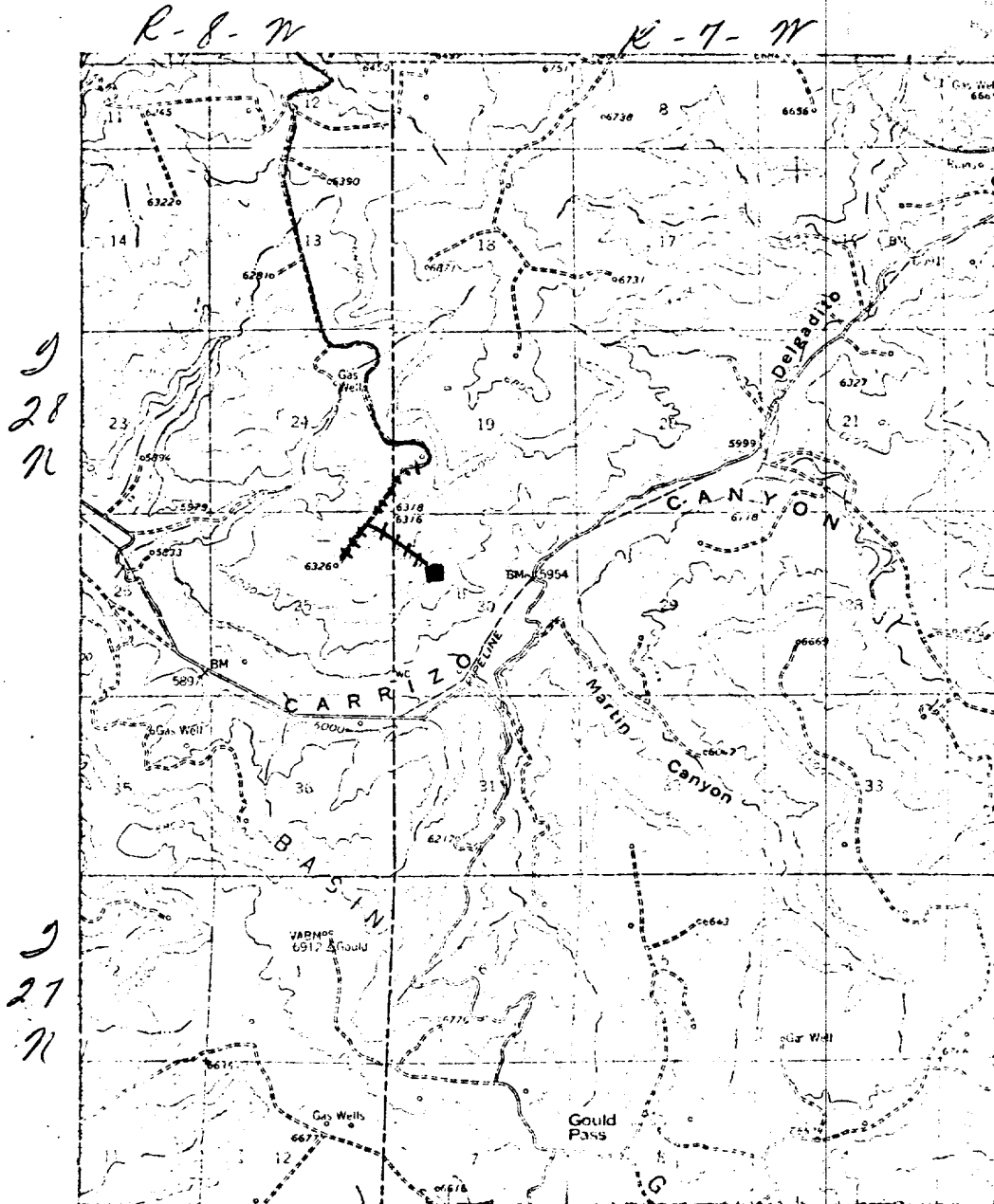
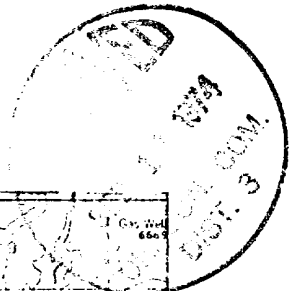
LOCATION AND EQUIPMENT LAY-OUT



San Juan 28-7 #200



San Juan 28-7 Unit #200  
 S. 7. 7. 7. 7. Sec. 30, T. 28. N, R. 7. W



# LEGEND OF RIGHT-OF-WAYS

- EXISTING ROADS —————
- EXISTING PIPELINES - - - - -
- EXISTING ROAD & PIPELINE - - - - -
- PROPOSED ROADS —————
- PROPOSED PIPELINES + + + + +
- PROPOSED ROAD & PIPELINE + + + + +