

**LTR**



**Job separation sheet**

UNITED STATES  
DEPARTMENT OF THE INTERIOR  
GEOLOGICAL SURVEY

30-039-21097

## APPLICATION FOR PERMIT TO DRILL, DEEPEN, OR PLUG BACK

## 1a. TYPE OF WORK

DRILL ☒DEEPEN ☐PLUG BACK ☐

## b. TYPE OF WELL

OIL  
WELL ☐GAS  
WELL ☒

OTHER

SINGLE  
ZONE ☐MULTIPLE  
ZONE ☐

## 2. NAME OF OPERATOR

Phillips Petroleum Company

## 3. ADDRESS OF OPERATOR

P. O. Box 2920, Casper, Wyoming 82601

## 4. LOCATION OF WELL (Report location clearly and in accordance with any State requirements)

At surface

1070' FNL &amp; 1840' FEL (SW NE)

At proposed prod. zone

## 14. DISTANCE IN MILES AND DIRECTION FROM NEAREST TOWN OR POST OFFICE

## 15. DISTANCE FROM PROPOSED\*

LOCATION TO NEAREST

PROPERTY OR LEASE LINE, FT.

(Also to nearest drlg. unit line, if any)

## 16. NO. OF ACRES IN LEASE

17. NO. OF ACRES ASSIGNED  
TO THIS WELL

## 18. DISTANCE FROM PROPOSED LOCATION\*

TO NEAREST WELL, DRILLING, COMPLETED,  
OR APPLIED FOR, ON THIS LEASE, FT.

## 19. PROPOSED DEPTH

8600'

## 20. ROTARY OR CABLE TOOLS

Rotary

## 21. ELEVATIONS (Show whether DF, RT, GR, etc.)

7148' Gr.

## 22. APPROX. DATE WORK WILL START\*

May 20, 1975

## 23.

## PROPOSED CASING AND CEMENTING PROGRAM

SIZE OF HOLE	SIZE OF CASING	WEIGHT PER FOOT	SETTING DEPTH	QUANTITY OF CEMENT
17-1/2"	13-3/8"	48	300	Circ.
7-7/8"	5-1/2"	various	8600	2000' fillup

It is proposed to drill an 8600' Morrison Exploratory Gas Well.

Series 900, 3000 psi, BOP equipment will be operated daily and tested weekly.

Morrison NWU

IN ABOVE SPACE DESCRIBE PROPOSED PROGRAM: If proposal is to deepen or plug back, give data on present productive zone and proposed new productive zone. If proposal is to drill or deepen directionally, give pertinent data on subsurface locations and measured and true vertical depths. Give blowout preventer program, if any.

## 24.

SIGNED

F. C. Morgan

TITLE

Area Superintendent

DATE

May 1, 1975

(This space for Federal or State office use)

PERMIT NO.

APPROVAL DATE

APPROVED BY

TITLE

DATE

CONDITIONS OF APPROVAL, IF ANY:

- 6 - U.S.G.S., Durango, CO ✓
- 1 - Bvile E&P
- 1 - Denver E&P
- 1 - R. N. Hughes
- 1 - File

\*See Instructions On Reverse Side

**NEW MEXICO OIL CONSERVATION COMMISSION  
WELL LOCATION AND ACREAGE DEDICATION PLAT**

Form C-102  
Supersedes C-128  
Effective 1-1-65

All distances must be from the outer boundaries of the Section.

Operator <b>Phillips Petroleum Company</b>			Lease <b>Jicarilla 28-3</b>		Well No. <b>1</b>
Unit Letter <b>G</b>	Section <b>6</b>	Township <b>28N</b>	Range <b>3W</b>	County <b>Rio Arriba</b>	
Actual Footage Location of Well:					
<b>1070</b>	feet from the <b>North</b>	line and	<b>1840</b>	feet from the <b>East</b>	line
Ground Level Elev. <b>7148</b>	Producing Formation <b>Javito</b>		Pool <b>Basin</b>	Dedicated Acreage: <b>360.62</b> Acres	

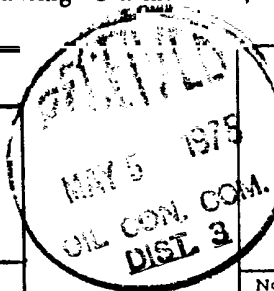
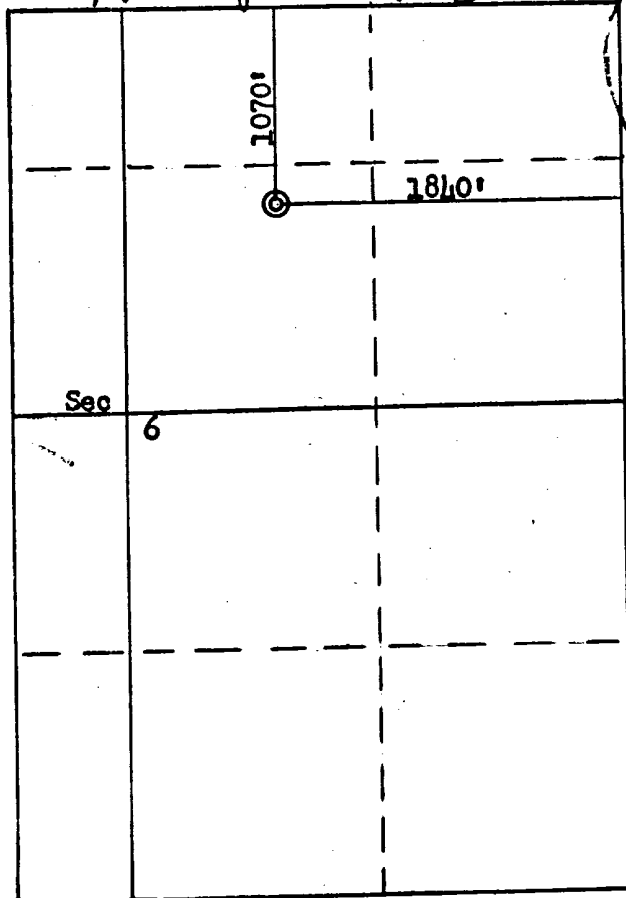
1. Outline the acreage dedicated to the subject well by colored pencil or hachure marks on the plat below.
2. If more than one lease is dedicated to the well, outline each and identify the ownership thereof (both as to working interest and royalty).
3. If more than one lease of different ownership is dedicated to the well, have the interests of all owners been consolidated by communitization, unitization, force-pooling, etc?

☐ Yes    ☐ No    If answer is "yes," type of consolidation \_\_\_\_\_

If answer is "no," list the owners and tract descriptions which have actually been consolidated. (Use reverse side of this form if necessary.) \_\_\_\_\_

No allowable will be assigned to the well until all interests have been consolidated (by communitization, unitization, forced-pooling, or otherwise) or until a non-standard unit, eliminating such interests, has been approved by the Commission.

*ALL Partial Sec. 6*



**CERTIFICATION**

I hereby certify that the information contained herein is true and complete to the best of my knowledge and belief.

Name  
**F. C. Morgan**  
Position  
**Area Superintendent**  
Company  
**Phillips Petroleum Company**  
Date  
**May 1, 1975**

I hereby certify that the well location shown on this plat was plotted from field notes of actual surveys made by me or under my supervision, and that the same is true and correct to the best of my knowledge and belief.

Date Surveyed  
**April 24, 1975**  
Registered Professional Engineer and/or Land Surveyor  
**Fred B. Kerr**  
Certificate No.  
**3950**

Scale: 1"=1000'