

UNITED STATES
DEPARTMENT OF THE INTERIOR
GEOLOGICAL SURVEY

APPLICATION FOR PERMIT TO DRILL, DEEPEN, OR PLUG BACK

1a. TYPE OF WORK

DRILL ☒DEEPEN ☐PLUG BACK ☐

b. TYPE OF WELL

OIL
WELL ☐GAS
WELL ☒

OTHER

SINGLE
ZONE ☐MULTIPLE
ZONE ☒

2. NAME OF OPERATOR

Southland Royalty Company

3. ADDRESS OF OPERATOR

P. O. Drawer 570, Farmington, New Mexico

4. LOCATION OF WELL (Report location clearly and in accordance with any State requirements.)*

At surface

1160' FSL & 1830' FEL

At proposed prod. zone

14. DISTANCE IN MILES AND DIRECTION FROM NEAREST TOWN OR POST OFFICE*

42 miles southwest of Dulce, New Mexico

15. DISTANCE FROM PROPOSED*

LOCATION TO NEAREST

PROPERTY OR LEASE LINE, FT.

(Also to nearest drig. unit line, if any)

18. DISTANCE FROM PROPOSED LOCATION*

TO NEAREST WELL, DRILLING, COMPLETED,
OR APPLIED FOR, ON THIS LEASE, FT.

16. NO. OF ACRES IN LEASE

19. PROPOSED DEPTH

6230'

17. NO. OF ACRES ASSIGNED
TO THIS WELL

305.97 306.18/204.06

20. ROTARY OR CABLE TOOLS

Rotary

21. ELEVATIONS (Show whether DF, RT, GR, etc.)

6863' GR

22. APPROX. DATE WORK WILL START*

June 1, 1979

23.

PROPOSED CASING AND CEMENTING PROGRAM

SIZE OF HOLE	SIZE OF CASING	WEIGHT PER FOOT	SETTING DEPTH	QUANTITY OF CEMENT
12-1/4"	9-5/8"	36#	200'	219 cu. ft.
8-3/4"	7"	20#	4050'	592 cu. ft.
6-1/4"	4-1/2"	10.5#	3900'-6230'	406 cu. ft.
	2-3/8"	4.7#	6150'	
	1-1/2"	2.7#	3600'	

Surface formation is San Jose.

Top of Ojo Alamo sand is at 1425'.

Fresh water mud will be used to drill from surface to intermediate total depth.

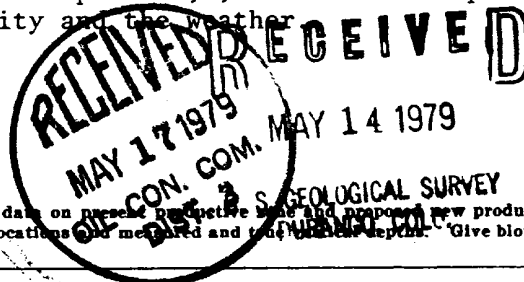
An air system will be used to drill from intermediate depth to total depth.

It is anticipated that an IES and a GR-Density log will be run at intermediate depth.

It is anticipated that a GR-Density and a GR-Induction log will be run at total depth.

It is expected that this well will be drilled before September 1, 1979. This depends
on time required for approvals, rig availability and the weather.

Gas is not dedicated.



IN ABOVE SPACE DESCRIBE PROPOSED PROGRAM: If proposal is to deepen or plug back, give data on present productive zone and proposed new productive zone. If proposal is to drill or deepen directionally, give pertinent data on subsurface locations and measured and true vertical depths. Give blowout preventer program, if any.

24.

SIGNED

TITLE

District Production Manager

DATE

May 1, 1979

(This space for Federal or State office use)

PERMIT NO.

APPROVAL DATE

APPROVED BY

TITLE

DATE

CONDITIONS OF APPROVAL, IF ANY:

ok Frank

State

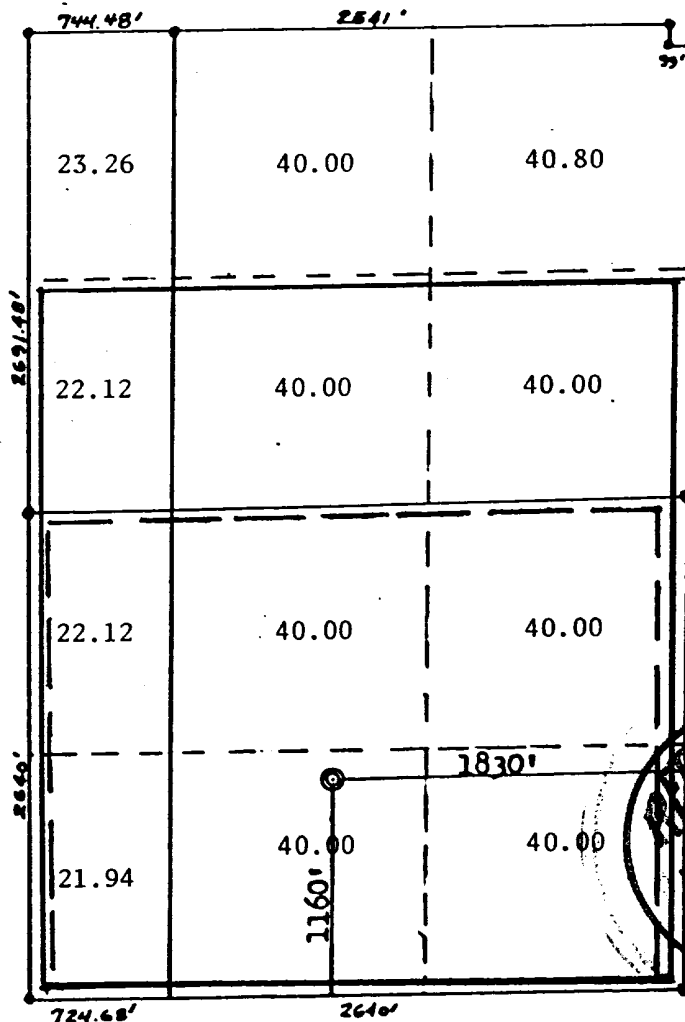
*See Instructions On Reverse Side

NE.. MEXICO OIL CONSERVATION COMMISSION
WELL LOCATION AND ACREAGE DEDICATION PLAT

Form C-102
Supersedes C-128
Effective 1-1-83

All distances must be from the outer boundaries of the Section.

Operator SOUTHLAND ROYALTY COMPANY			Lease JICARILLA 1419		Well No. 2
Unit Letter 0	Section 31	Township 28N	Range 3W	County RIO ARRIBA	
Actual Footage Location of Well: 1160 feet from the South line and 1830 feet from the East line					
Ground Level Elev: 6863	Producing Formation Mesaverde/Pictured Cliffs		Pool Caavilan ext Blanco/Choza Mesa	Dedicated Acreage MV 203.85 PC 203.85 306.18/204.06 Acres	
<p>1. Outline the acreage dedicated to the subject well by colored pencil or hachure marks on the plat below.</p> <p>2. If more than one lease is dedicated to the well, outline each and identify the ownership thereof (both as to working interest and royalty).</p> <p>3. If more than one lease of different ownership is dedicated to the well, have the interests of all owners been consolidated by communitization, unitization, force-pooling, etc?</p> <p><input type="checkbox"/> Yes <input type="checkbox"/> No If answer is "yes," type of consolidation _____</p> <p>If answer is "no," list the owners and tract descriptions which have actually been consolidated. (Use reverse side of this form if necessary.) _____</p> <p>No allowable will be assigned to the well until all interests have been consolidated (by communitization, unitization, forced-pooling, or otherwise) or until a non-standard unit, eliminating such interests, has been approved by the Commission.</p>					



CERTIFICATION

I hereby certify that the information contained herein is true and complete to the best of my knowledge and belief.

Name _____
Position
District Production Manager
Company
Southland Royalty Company
Date
May 10, 1979

I hereby certify that the well location shown on this plat was plotted from field notes of actual surveys made by me or under my supervision, and that the same is true and correct to the best of my knowledge and belief.

Date Surveyed
April 19, 1979
Registered Professional Engineer
and Land Surveyor
Fred B. Terry
Certification No. 3950

DRILLING SCHEDULE - JICARILLA 449 #2

Location: 1160' FSL & 1830' FEL, Section 31, T28N, R3W, Rio Arriba County, New Mexico

Field: Blanco Mesaverde/Choza Mesa Pictured Cliffs Elevation: 6863' GR

Geology:

Formation Tops:	Ojo Alamo	1425'	Cliff House	5515'
	Fruitland	3475'	Point Lookout	5880'
	Pictured Cliffs	3650'	Intermediate depth	4050'
			Total depth	6230'

Logging Program: IES & GR-Density at intermediate total depth.
GR-Density and GR-Induction at total depth.

Coring Program: None

Natural Gauges: Gauge at last connection above Cliff House, Point Lookout and total depth.
Gauge any increase in gas flow.

Drilling:

<u>Contractor:</u>	<u>Tool Pusher:</u>
	SRC Ans. Service: 325-1841
<u>SRC Representative:</u>	Dispatch Number: 325-7391

Mud Program: Fresh water mud from surface to Intermediate total depth.
Air from intermediate to total depth.

Materials:

<u>Casing Program:</u>	<u>Hole Size</u>	<u>Depth</u>	<u>Casing Size</u>	<u>Wt. & Grade</u>
	12-1/4"	200'	9-5/8"	36# K-55
	8-3/4"	4050'	7"	20# K-55
	6-1/4"	3900'-6230'	4-1/2"	10.5# K-55

Float Equipment:

9-5/8" Surface Casing: Pathfinder, type "A", guide shoe.

7" Intermediate Casing: Pathfinder, type "A", guide shoe. Pathfinder self-fill insert float valve. Five (5) Pathfinder rigid centralizers. Run float 2 joints above shoe. Run centralizers every other joint above shoe.

4-1/2" Liner: Pathfinder, type "AP", guide shoe. Pathfinder, type "A", flapper float collar.

Tubing: 6150' of 2-3/8" EUE & 3600' of 1-1/2" IJ

Wellhead Equipment: 9 5/8" X 10", 2000# casing head.
10", 2000# X 6", 2000# tubing head.

Cementing:

9-5/8" surface casing: 219 cu. ft. 186 sxs Class "B" with 1/4# gel flake per sx and 3% CaCl. (150% excess)
WOC 12 hrs.
Test to 600 psi prior to drilling out.

7" intermediate csg: 592 cu. ft. 342 sxs 50/50, Class "B" Poz with 6% gel, 1/4# cello flake per sack. Mix with 7.2 gals water per sack to weigh 12.85 ppg. Tail in with 70 sxs of Class "B" with 2% CaCl and 1/4# cello flake per sx. (50% excess to cover Ojo Alamo. WOC 12 hrs. Run Temp. survey 8 hrs after plug down.

4-1/2" liner: 406 cu. ft. Precede cement with 20 bbls. gelled water. Cement with 273 sxs of 50/50, Class "B", Poz with 6% gel, 1/4# cello flake and .6% Halad 9. Mix cement with 7.2 gals water per sack to weigh 12.85 ppg (70% excess). If hole gets wet and mist drilling is required, use 100% excess to circulate liner. (321 sxs)



Southland Royalty Company

May 1, 1979

United States Geological Survey
P. O. Box 1809
Durango, Colorado

Attention: Mr. Jerry Long

Dear Sir:

Enclosed please find map showing existing roads and planned access roads to Southland Royalty Company's Jicarilla 449 #2 well. The location of tank batteries and flow lines will be on location with well. A burn pit will be provided for disposal of trash. Cuttings, drilling fluid and produced fluids will be put into the reserve pit and properly disposed of depending on amount and type of fluids.

Contractor will furnish restroom facilities on location.

There will be no air strips or camps.

Also, enclosed is a location layout showing approximate location of rig, pits, pipe racks and cut required to build this location.

Water supply will be water holes along Companero Wash. All water will be transported by truck and stored on location.

The location will be restored according to Bureau of Indian Affairs standards. This work will begin when all related construction is finished.

Mr. Ross Lankford will be Southland Royalty Company's field representative supervising these operations.

Yours truly,

L. O. Van Ryan
District Production Manager

LOVR/dg



Southland Royalty Company

United States Geological Survey
P. O. Box 1809
Durango, Colorado

Attention: Mr. Jerry Long

Dear Sir:

I hereby certify that I, or persons under my direct supervision, have inspected the proposed drillsite and access route; that I am familiar with the conditions which presently exist; that the statements made in this plan are, to the best of my knowledge, true and correct; and, that the work associated with the operations proposed herein be performed by Southland Royalty Company and its contractors and subcontractors in conformity with this plan and the terms and conditions under which it is approved.

Date: May 1, 1979

Name: 

Title: District Production Manager



Southland Royalty Company

May 1, 1979

United States Geological Survey
P. O. Box 1809
Durango, Colorado

Attention: Blowout Preventer Plan

Dear Sir:

All drilling and completion rigs will be equipped with 6" or larger double gate hydraulic blowout preventers and a hydraulic operated closing unit with steel lines.

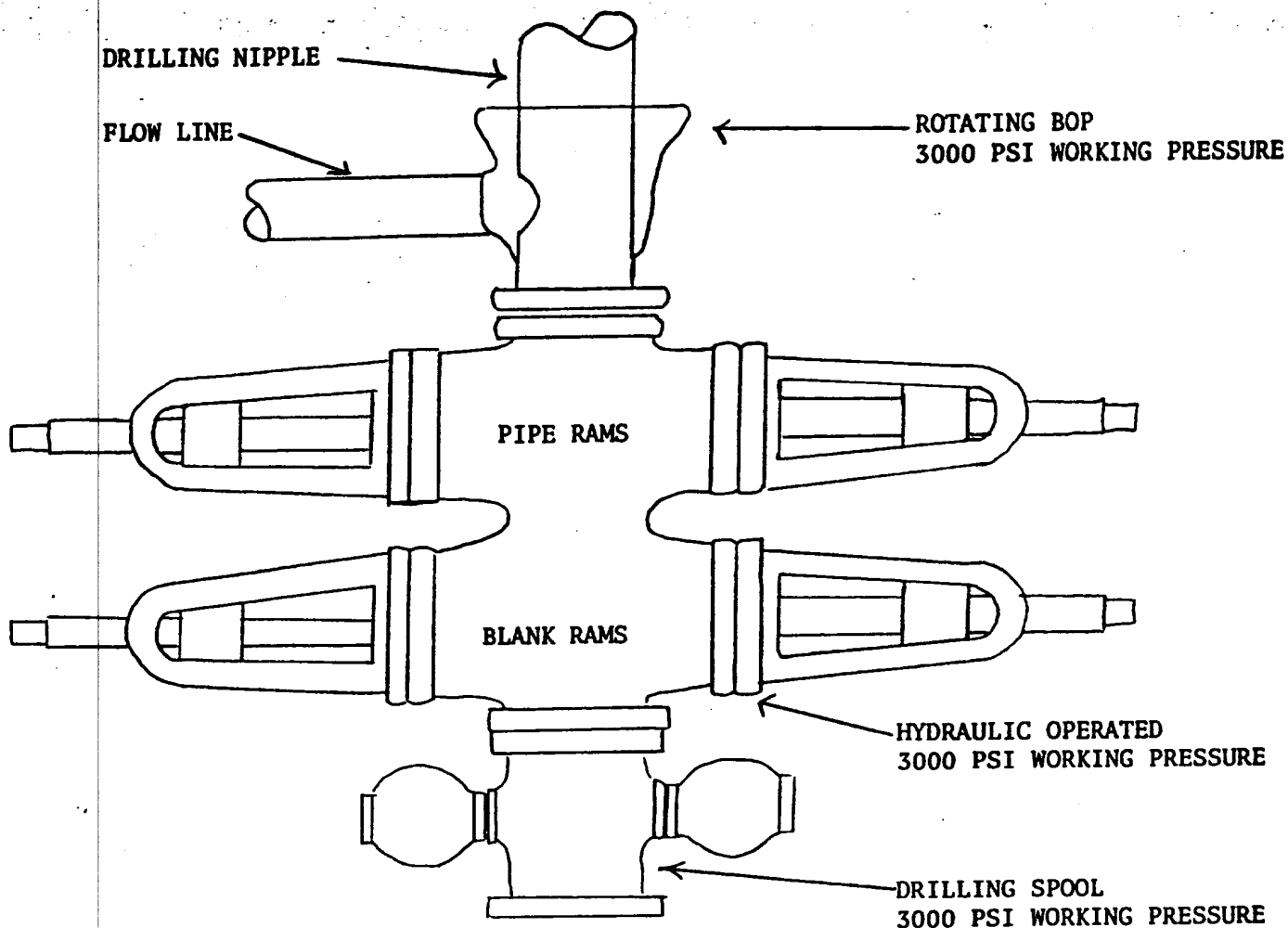
The preventer is 3000# working pressure and 6000# test.

All crews will be thoroughly trained in the operation of this preventer. The preventer will be tested frequently enough to insure proper operation.

Yours truly,

L. O. Van Ryan
District Production Manager

LOVR/dg



PREVENTERS AND SPOOLS ARE TO HAVE
THROUGH BORE OF 6" - 3000 PSI OR LARGER



Q



Date: April 19, 1979