

UNITED STATES
DEPARTMENT OF THE INTERIOR
GEOLOGICAL SURVEY

APPLICATION FOR PERMIT TO DRILL, DEEPEN, OR PLUG BACK

1a. TYPE OF WORK

DRILL ☒DEEPEN ☐PLUG BACK ☐

b. TYPE OF WELL

OIL
WELL ☐GAS
WELL ☒

OTHER

SINGLE
ZONE ☐MULTIPLE
ZONE ☐

2. NAME OF OPERATOR

Jerome P. McHugh

3. ADDRESS OF OPERATOR

Box 208, Farmington, NM 87401

4. LOCATION OF WELL (Report location clearly and in accordance with any State requirements.)*

At surface

1450' FSL - 1850' FWL

At proposed prod. zone

14. DISTANCE IN MILES AND DIRECTION FROM NEAREST TOWN OR POST OFFICE*

20 miles southwest Dulce, NM

15. DISTANCE FROM PROPOSED*

LOCATION TO NEAREST
PROPERTY OR LEASE LINE, FT.
(Also to nearest drig. unit line, if any)

1450'

18. DISTANCE FROM PROPOSED LOCATION*

TO NEAREST WELL, DRILLING, COMPLETED,
OR APPLIED FOR, ON THIS LEASE, FT.

approx 1/2 mi

16. NO. OF ACRES IN LEASE

19. PROPOSED DEPTH

6350'

17. NO. OF ACRES ASSIGNED
TO THIS WELL

w/320 - 160 -

20. ROTARY OR CABLE TOOLS

Rotary

21. ELEVATIONS (Show whether DF, RT, GR, etc.)

7100' GR

22. APPROX. DATE WORK WILL START*

October 1, 1979

23.

PROPOSED CASING AND CEMENTING PROGRAM

SIZE OF HOLE	SIZE OF CASING	WEIGHT PER FOOT	SETTING DEPTH	QUANTITY OF CEMENT
12-1/2"	8-5/8" new	32.30#	200'	200 sx
7-7/8"	4-1/2" new	10.5#	6350'	1100 sx (2 stages)

Plan to drill well with mud thru Mesaverde formation, set 4-1/2" casing and cement to surface in two stages, selectively perforate and frac Mesaverde formation, cleanout after frac, run 1-1/4" tbg and complete well.

Will use hydraulic blowout preventer furnished by rig while drilling, Shaffer double gate manual BOP while completing, and 600 series screwed API wellhead.

Will fence reserve pit on 3 sides before spudding and fourth side MORT

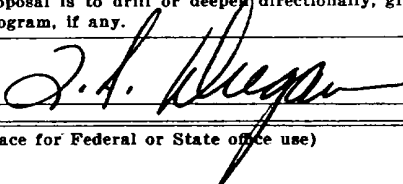
NMERB: Gas not dedicated

AUG 10 1979
OIL CON. COM.
DIST 3

IN ABOVE SPACE DESCRIBE PROPOSED PROGRAM: If proposal is to deepen or plug back, give data on present productive zone and proposed new productive zone. If proposal is to drill or deepen directionally, give pertinent data on subsurface locations and measured and true vertical depths. Give blowout preventer program, if any.

24.

SIGNED



TITLE

Agent

DATE

8-7-79

(This space for Federal or State office use)

PERMIT NO.

APPROVAL DATE

APPROVED BY

TITLE

CONDITIONS OF APPROVAL, IF ANY:



AUG 9 1979

U. S. GEOLOGICAL SURVEY
DULCE, NM

*See Instructions On Reverse Side

**NEW MEXICO OIL CONSERVATION COMMISSION
WELL LOCATION AND ACREAGE DEDICATION PLAT**

Form C-102
Supersedes C-128
Effective 1-1-65

All distances must be from the outer boundaries of the Section.

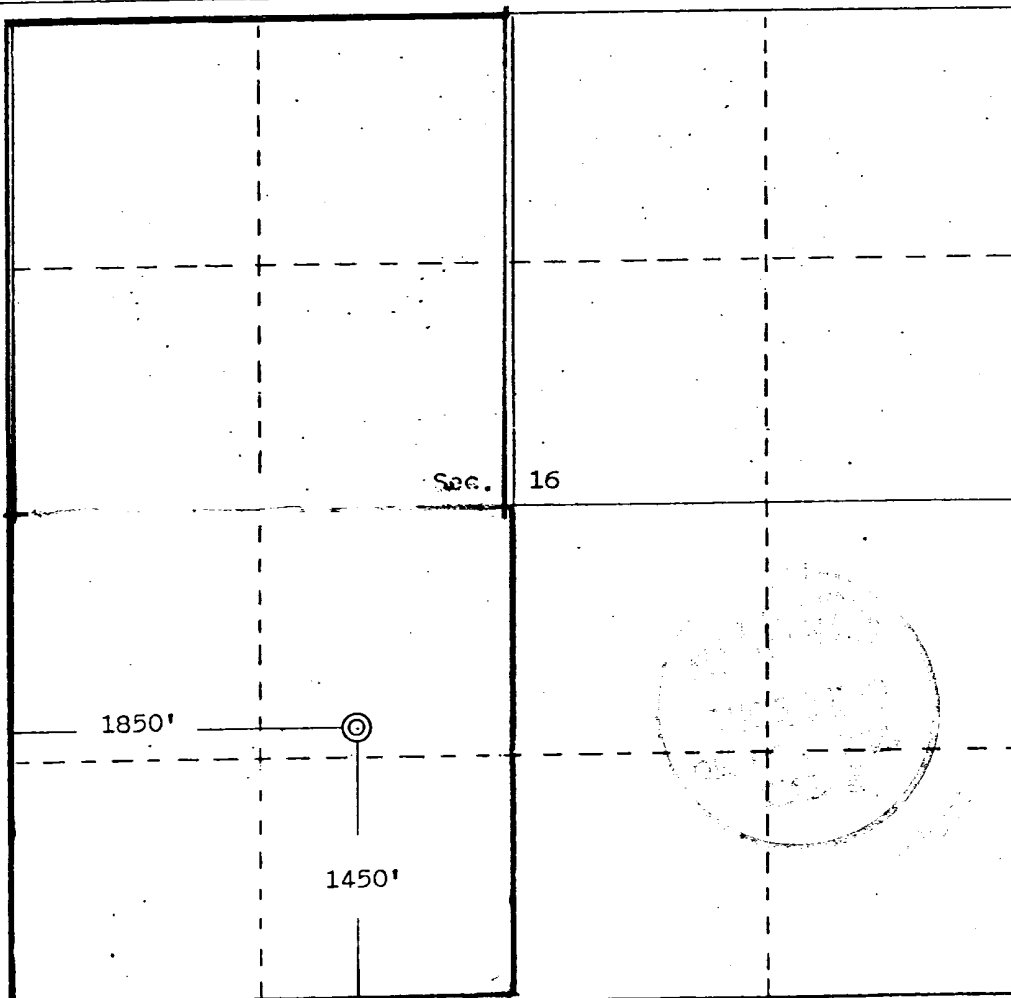
Operator Jerome P. McHugh			Lease Jer		Well No. #4
Unit Letter K	Section 16	Township 28 North	Range 3 West	County Rio Arriba	
Actual Footage Location of Well: 1450 feet from the South line and 1850 feet from the West line					
Ground Level Elev. 7100	Producing Formation Mesaverde	Pool Blanco		Dedicated Acreage: 320 160 Acres	

1. Outline the acreage dedicated to the subject well by colored pencil or hatchure marks on the plat below.
2. If more than one lease is dedicated to the well, outline each and identify the ownership thereof (both as to working interest and royalty).
3. If more than one lease of different ownership is dedicated to the well, have the interests of all owners been consolidated by communitization, unitization, force-pooling, etc?

☐ Yes ☐ No If answer is "yes," type of consolidation _____

If answer is "no," list the owners and tract descriptions which have actually been consolidated. (Use reverse side of this form if necessary.) _____

No allowable will be assigned to the well until all interests have been consolidated (by communitization, unitization, forced-pooling, or otherwise) or until a non-standard unit, eliminating such interests, has been approved by the Commission.



CERTIFICATION

I hereby certify that the information contained herein is true and complete to the best of my knowledge and belief.

Jerome P. McHugh
Name
Agent

Position
Jerome P. McHugh

Company
8-7-79

Date

EDGAR L. RISENHOVER
REGISTERED PROFESSIONAL ENGINEER
AND LAND SURVEYOR

Date Surveyed
May 7, 1979

Registered Professional Engineer
and/or Land Surveyor

Edgar L. Risenhoover
Certificate No. **5979**
Edgar L. Risenhoover, L.S.