

UNITED STATES
DEPARTMENT OF THE INTERIOR
GEOLOGICAL SURVEY

APPLICATION FOR PERMIT TO DRILL, DEEPEN, OR PLUG BACK

1a. TYPE OF WORK

DRILL ☒DEEPEN ☐PLUG BACK ☐

b. TYPE OF WELL

OIL
WELL ☐GAS
WELL ☒

OTHER

SINGLE
ZONE ☐MULTIPLE
ZONE ☐

2. NAME OF OPERATOR

Jerome P. McHugh

(Agent for Amoco Prod. Co.)

3. ADDRESS OF OPERATOR

Box 208, Farmington, NM 87401

4. LOCATION OF WELL (Report location clearly and in accordance with any State requirements.)*

At surface

890' FSL - 1850' FEL

At proposed prod. zone

14. DISTANCE IN MILES AND DIRECTION FROM NEAREST TOWN OR POST OFFICE*

25 miles southwest of Dulce, NM

15. DISTANCE FROM PROPOSED*

LOCATION TO NEAREST
PROPERTY OR LEASE LINE, FT.
(Also to nearest drlg. unit line, if any)

890'

18. DISTANCE FROM PROPOSED LOCATION*
TO NEAREST WELL, DRILLING, COMPLETED,
OR APPLIED FOR, ON THIS LEASE, FT.

1/2 mi.

16. NO. OF ACRES IN LEASE

640

19. PROPOSED DEPTH

4500'

17. NO. OF ACRES ASSIGNED
TO THIS WELL

160

20. ROTARY OR CABLE TOOLS

Rotary

21. ELEVATIONS (Show whether DF, RT, GR, etc.)

7362' GR

22. APPROX. DATE WORK WILL START*

October 1, 1979

23.

PROPOSED CASING AND CEMENTING PROGRAM

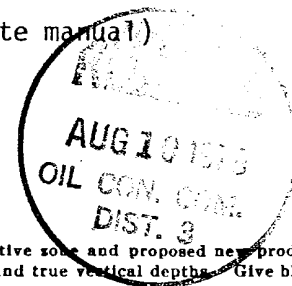
SIZE OF HOLE	SIZE OF CASING	WEIGHT PER FOOT	SETTING DEPTH	QUANTITY OF CEMENT
12-1/4"	8-5/8" new	24#	180'	125 sx
7-7/8"	4-1/2" new	10.5#	4500'	625 sx

Plan to drill well to test the Pictured Cliffs Formation using mud as a circulating medium. Plan to run open hole logs, set 4-1/2" csg thru the Pictured Cliffs formation, selectively perforate, frac, cleanout after frac, run tubing and complete well.

Plan to use BOP furnished by rig while drilling (10" 3000 psi hydraulic)

Plan to use BOP rental while completing (6" 3000 psi double gate manual)

NMERB: Gas dedicated to El Paso.



IN ABOVE SPACE DESCRIBE PROPOSED PROGRAM: If proposal is to deepen or plug back, give data on present productive zone and proposed new productive zone. If proposal is to drill or deepen directionally, give pertinent data on subsurface locations and measured and true vertical depths. Give blowout preventer program, if any.

24.

SIGNED

TITLE

Agent

DATE

8-7-79

(This space for Federal or State office use)

PERMIT NO.

APPROVAL DATE

APPROVED BY

TITLE

AUG 8 1979

CONDITIONS OF APPROVAL, IF ANY:

oh Frank

U. S. GEOLOGICAL SURVEY
DURANGO, COLO.

*See Instructions On Reverse Side

NEW MEXICO OIL CONSERVATION COMMISSION
WELL LOCATION AND ACREAGE DEDICATION PLAT

Form C-102
Supersedes C-128
Effective 1-1-65

All distances must be from the outer boundaries of the Section.

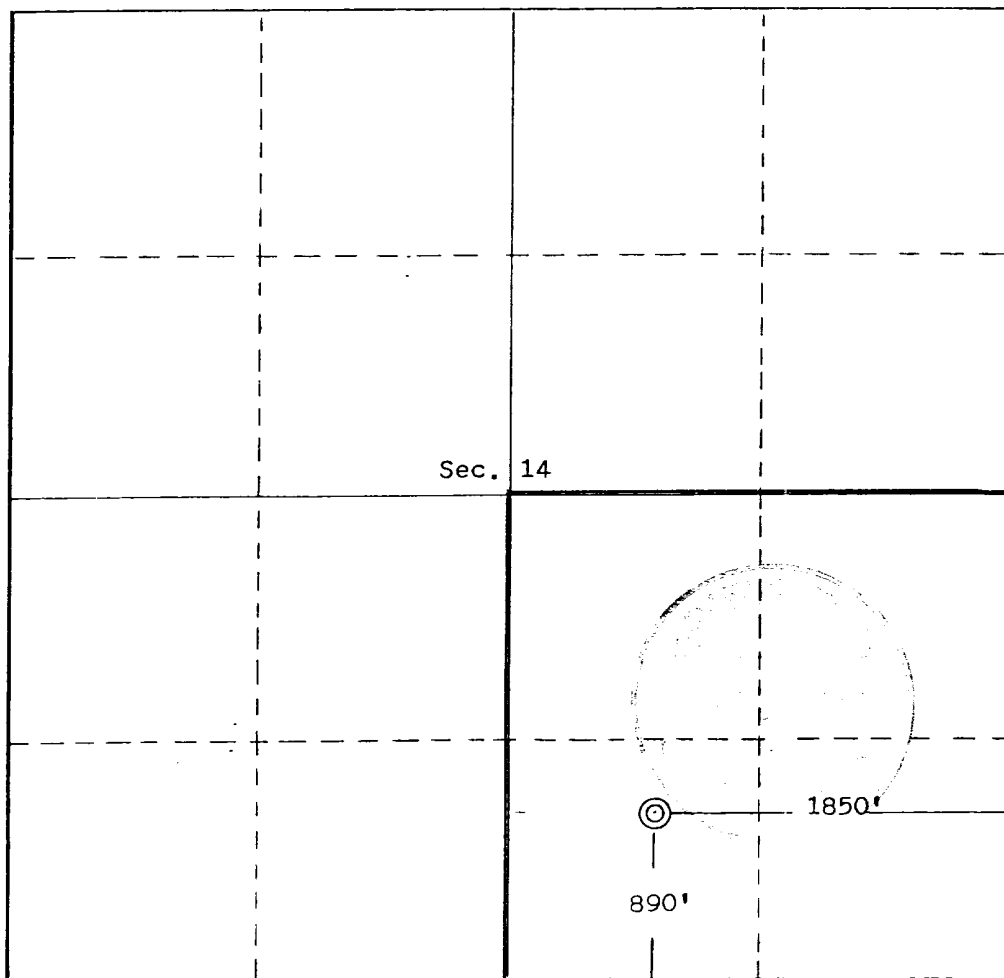
Operator Jerome P. McHugh (Agent for Amoco Prod. Co.)		Lease Valencia Canyon Unit		Well No. #42
Unit Letter 0	Section 14	Township 28 North	Range 4 West	County Rio Arriba
Actual Footage Location of Well:				
890 feet from the South line and		1850 feet from the East line		
Ground Level Elev. 7362	Producing Formation Pictured Cliffs	Pool Choza Mesa	Dedicated Acreage: 160 Acres	

1. Outline the acreage dedicated to the subject well by colored pencil or hachure marks on the plat below.
2. If more than one lease is dedicated to the well, outline each and identify the ownership thereof (both as to working interest and royalty).
3. If more than one lease of different ownership is dedicated to the well, have the interests of all owners been consolidated by communitization, unitization, force-pooling, etc?

☐ Yes ☐ No If answer is "yes," type of consolidation _____

If answer is "no," list the owners and tract descriptions which have actually been consolidated. (Use reverse side of this form if necessary.) _____

No allowable will be assigned to the well until all interests have been consolidated (by communitization, unitization, forced-pooling, or otherwise) or until a non-standard unit, eliminating such interests, has been approved by the Commission.



CERTIFICATION

I hereby certify that the information contained herein is true and complete to the best of my knowledge and belief.

J. P. McHugh
Name
Agent

Position
Jerome P. McHugh

Company
8-7-79

Date

I hereby certify that the information shown on this plat was plotted from field notes of actual survey made by me or under my supervision, and that the same is true and correct to the best of my knowledge and belief.

Date Surveyed
June 22, 1979

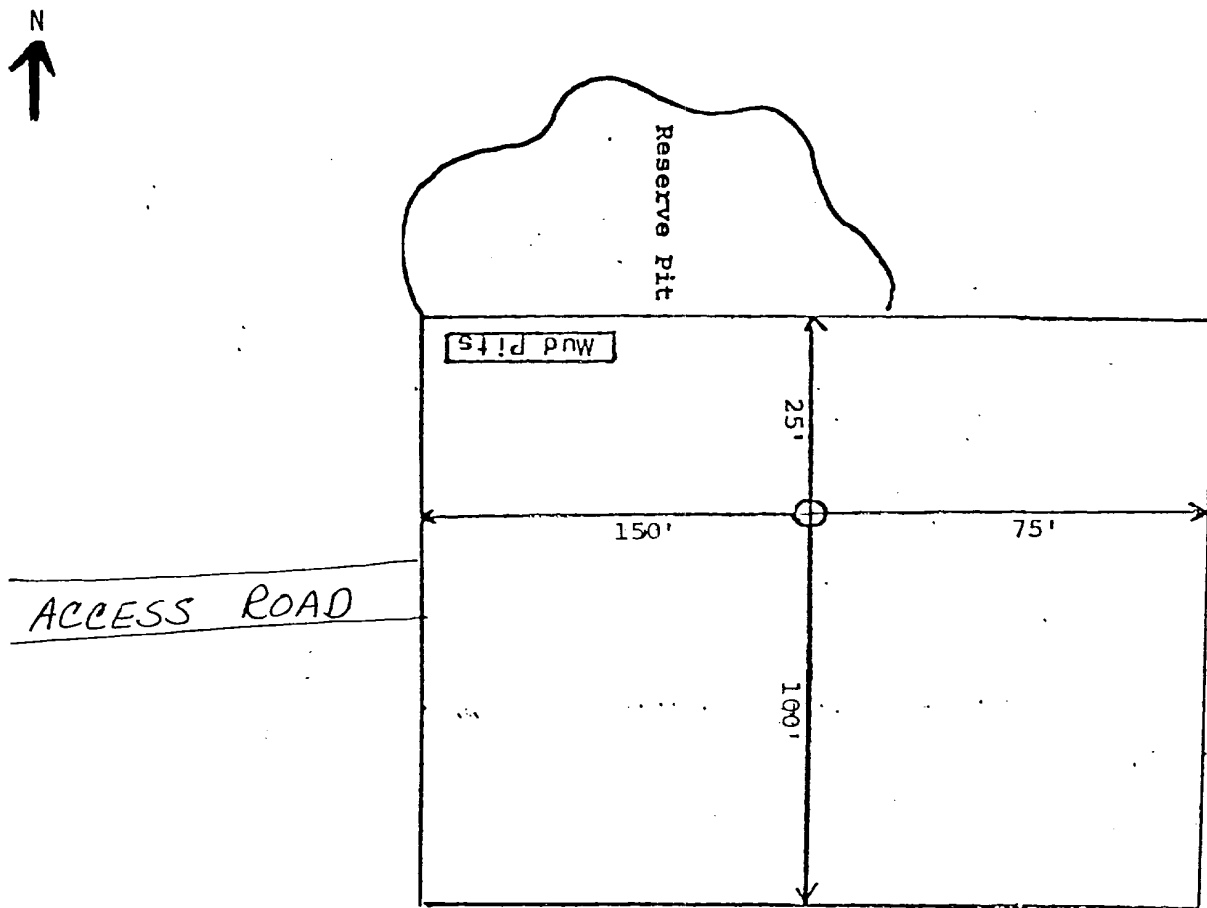
Registered Professional Engineer
and/or Land Surveyor

Edgar L. Risenbower

Certificate No. 5979

Edgar L. Risenbower, L.S.

Dugan Production Corp.
Valencia Canyon #42
Proposed Location Layout



DEVELOPMENT PLAN

Jerome P. McHugh

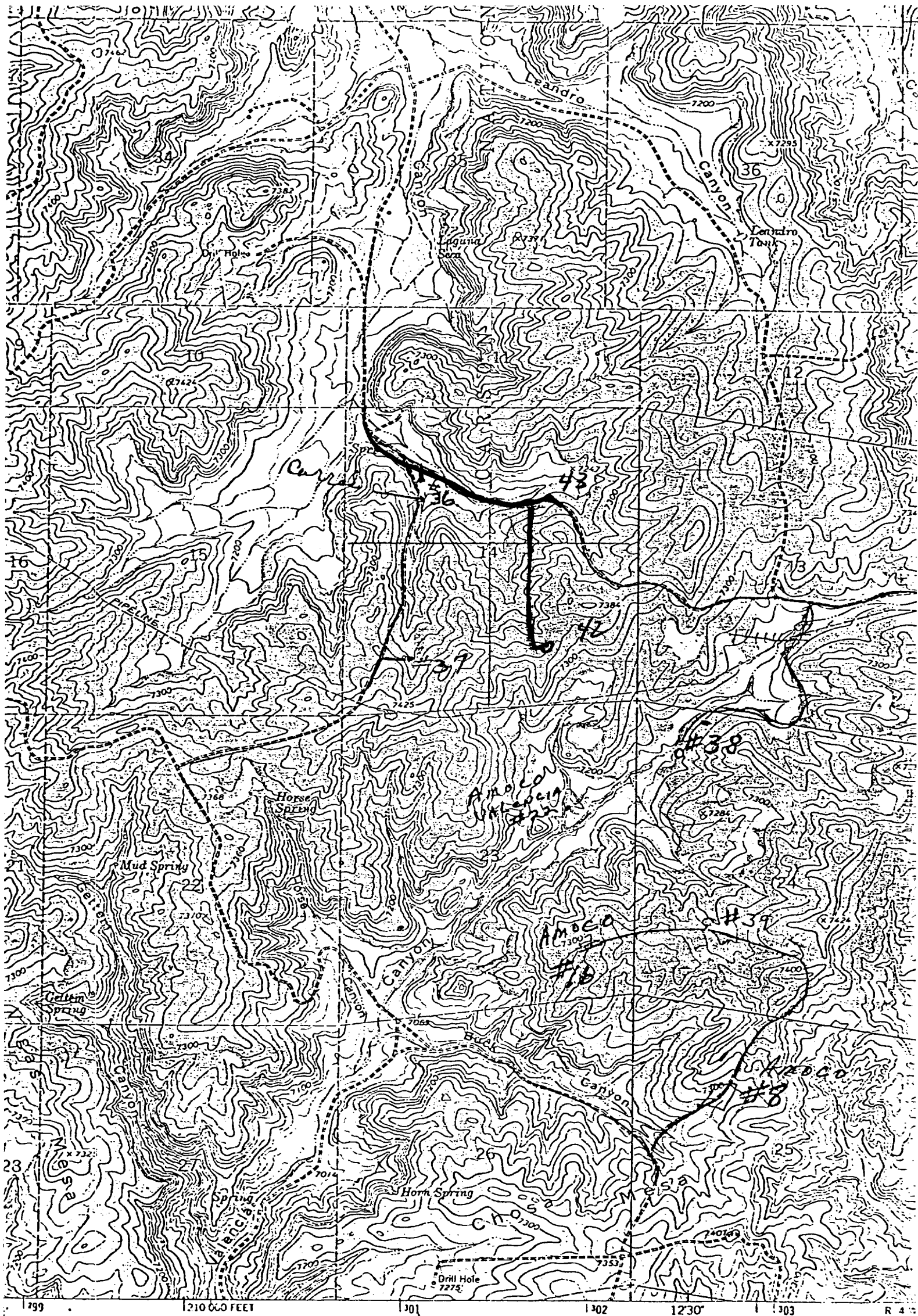
Valencia Canyon #42

1. Existing roads and existing wells are shown on attached plat.
2. Planned access from existing road approximately 1/2 mi to new location. Will leave natural grass and small vegetation on roadway. Will remove large brush or trees from road. Do not plan to make road grade or bar ditches. Will bottom-out any arroyo we cross and not install culverts.
3. Location of well: 890' FSL - 1850' FEL
Section 14 T28N R4W
Rio Arriba County, NM
4. One additional well(s) planned on this lease at this time.
5. Separator and flow line will be located within 50' of wellhead.
6. Water will be secured from La Jara Wash.
7. Waste materials will be buried on location or in reserve pit.
8. No permanent camp is planned; trailer house will be used on location while drilling.
9. Do not plan to build airstrip.
10. See attached plat for proposed location layout.
11. A general description of the topography, soil characteristics, geologic features, flora and fauna; other surface-use activities and surface ownership of involved lands, proximity of water, occupied dwellings, archeological, historical or cultural sites can be found in the archeologist's report.
12. Geologic name of surface formation: Undifferentiated Tertiary
13. Estimated tops of important geologic markers:
Ojo Alamo 3650' Pictured Cliffs 4100'
Kirtland 3800'
Fruitland 3980'
14. Estimated depths of anticipated water, oil, gas, or other mineral bearing formations which are expected to be encountered:
Ojo Alamo - 3650' - water Pictured Cliffs - 4100' - gas
15. We do not anticipate to encounter any abnormal pressures or temperatures or any potential hazards such as those associated with hydrogen sulfide.
16. Will clean up location, fill and level pits, level ruts in road, reseed location and road with Seed Mixture #2 and paint equipment with Pinon Green.
17. Operator's Representative:
Thomas A. Dugan
Box 234
Farmington, NM 87401
18. Certification: The following statement must be signed by the lessee's or operator's field representative who is identified in Item #17 of the Plan:

I hereby certify that I, or persons under my direct supervision, have inspected the proposed drillsite and access route; that I am familiar with the conditions which presently exist; that the statements made in this Plan are, to the best of my knowledge, true and correct; and, that the work associated with the operations proposed herein will be performed by Jerome P. McHugh and its contractors and subcontractors in conformity with this plan and the terms and conditions under which it is approved.

Date: 8-7-79

Thomas A. Dugan



mapped, edited, and published by the Geological Survey
 Control by USGS and USC&GS
 Topography by photogrammetric methods from aerial
 photographs taken 1958 and 1962. Field checked 1963
 Cylindrical projection 1927 North American datum
 600 foot grid based on New Mexico coordinate system, central zone
 60 meter Universal Transverse Mercator grid ticks.

