

UNITED STATES
DEPARTMENT OF THE INTERIOR
GEOLOGICAL SURVEY

30-039-22265

3. LEASE DESIGNATION AND SERIAL NO.

SF 079192

6. IF INDIAN, ALLOTTEE OR TRIBE NAME

7. UNIT AGREEMENT NAME

San Juan 28-6 Unit

8. FARM OR LEASE NAME

San Juan 28-6 Unit

9. WELL NO.

123R

10. FIELD AND POOL, OR WILDCAT

Basin Dakota

11. SEC., T., R., M., OR BLK.
AND SURVEY OR AREA

Sec. 16, T-28-N, R-6-W
NMPM

12. COUNTY OR PARISH

13. STATE

Rio Arriba NM

APPLICATION FOR PERMIT TO DRILL, DEEPEN, OR PLUG BACK

1a. TYPE OF WORK

DRILL ☒

DEEPEN ☐

PLUG BACK ☐

b. TYPE OF WELL

OIL
WELL ☐

GAS
WELL ☒

OTHER

SINGLE
ZONE ☒

MULTIPLE
ZONE ☐

2. NAME OF OPERATOR

El Paso Natural Gas Company

3. ADDRESS OF OPERATOR

PO Box 289, Farmington, NM 87401

4. LOCATION OF WELL (Report location clearly and in accordance with any State requirements.)

At surface

1520'N, 1540'E

At proposed prod. zone

same

14. DISTANCE IN MILES AND DIRECTION FROM NEAREST TOWN OR POST OFFICE*

5 miles southwest of Gobernador, NM

15. DISTANCE FROM PROPOSED*

LOCATION TO NEAREST
PROPERTY OR LEASE LINE, FT.
(Also to nearest drlg. unit line, if any)

1520'

16. NO. OF ACRES IN LEASE

unit

17. NO. OF ACRES ASSIGNED
TO THIS WELL

E/ 320.00

18. DISTANCE FROM PROPOSED LOCATION*
TO NEAREST WELL, DRILLING, COMPLETED,
OR APPLIED FOR, ON THIS LEASE, FT.

500'

19. PROPOSED DEPTH

8040'

20. ROTARY OR CABLE TOOLS

Rotary

21. ELEVATIONS (Show whether DF, RT, GR, etc.)

6699'GL

22. APPROX. DATE WORK WILL START*

23.

PROPOSED CASING AND CEMENTING PROGRAM

SIZE OF HOLE	SIZE OF CASING	WEIGHT PER FOOT	SETTING DEPTH	QUANTITY OF CEMENT
13 3/4"	9 5/8"	36.0#	200'	224 cu.ft. to circulate
8 3/4"	4 1/2"	10.5#	8040'	1458 cu.ft. - 3 stages
7 7/8"		11.6#		

1st stage - 452 cu.ft. to cover Gallup

2nd stage - 502 cu.ft. to cover Mesa Verde

3rd stage - 504 cu.ft. to cover Ojo Alamo

Selectively perforate and sandwater fracture the Dakota formation.

A 3000 psi WP and 6000 psi test double gate preventer equipped with blind and pipe rams will be used for blow out prevention on this well.

This gas is dedicated.

The E/2 of Section 16 is dedicated to this well.

IN ABOVE SPACE DESCRIBE PROPOSED PROGRAM: If proposal is to deepen or plug back, give data on present productive zone and proposed new productive zone. If proposal is to drill or deepen directionally, give pertinent data on subsurface locations and measured and true vertical depths. Give blowout preventer program, if any.

24.

SIGNED

A. G. Lucio

TITLE

Drilling Clerk

DATE

12-3-79

(This space for Federal or State office use)

PERMIT NO.

APPROVAL DATE

APPROVED BY

TITLE

DATE

CONDITIONS OF APPROVAL, IF ANY:

*See Instructions On Reverse Side

DEC 10 1979

GEOLOGICAL SURVEY
DENVER, COLO.

All distances must be from the outer boundaries of the Section.

Operator EL PASO NATURAL GAS COMPANY			Lease SAN JUAN 28-6 UNIT (SF-079192)		Well No. 123R
Unit Letter G	Section 16	Township 28N	Range 6W	County RIO ARriba	
Actual Footage Location of Well: 1520 feet from the North line and 1540 feet from the East line					
Ground Level Elev. 6699	Producing Formation DAKOTA		Pool BASIN DAKOTA	Dedicated Acreage: 320.00 Acres	

1. Outline the acreage dedicated to the subject well by colored pencil or hatchure marks on the plat below.
2. If more than one lease is dedicated to the well, outline each and identify the ownership thereof (both as to working interest and royalty).
3. If more than one lease of different ownership is dedicated to the well, have the interests of all owners been consolidated by communitization, unitization, force-pooling, etc?

☒ Yes ☐ No If answer is "yes," type of consolidation Unitization

If answer is "no," list the owners and tract descriptions which have actually been consolidated. (Use reverse side of this form if necessary.)

No allowable will be assigned to the well until all interests have been consolidated (by communitization, unitization, forced-pooling, or otherwise) or until a non-standard unit, eliminating such interests, has been approved by the Commission.

	CERTIFICATION	
	<p>I hereby certify that the information contained herein is true and complete to the best of my knowledge and belief.</p> <p><i>A. J. Guisco</i> Name Drilling Clerk Position El Paso Natural Gas Co. Company December 3, 1979 Date</p> <p>I hereby certify that the well location shown on this plat was plotted from field notes of actual surveys made by me or under my supervision, and that the same is true and correct to the best of my knowledge and belief.</p> <p>Date Surveyed August 1979 Registered Professional Engineer and/or Land Surveyor <i>Fred A. Kern</i> Certified to 3950</p>	

Multi-Point Surface Use Plan
San Juan 28-6 Unit #123R

1. Existing Road - Please refer to Map No. 1 which shows the existing roads. New roads which will be required have been marked on this map. All existing and new roads will be properly maintained during the duration of this project.
2. Planned Access Roads - Please refer to Map No. 1. The grade of the access roads will be consistent with that of the local terrain. The road surface will not exceed twenty feet (20') in width. Upon completion of the project, the access road will be adequately drained to control soil erosion. Drainage facilities may include ditches, water bars, culverts or any other measure deemed necessary by trained Company personnel to insure proper drainage. Gates and/or cattleguards will be installed if necessary.
3. Location of Existing Wells - Please refer to Map No. 2.
4. Location of Tank Batteries, Production Facilities, and Production Gathering and Service Lines - Please refer to Maps No. 1 and No. 2. Map No. 2 shows the existing gas gathering lines. Map No. 1 shows the existing roads and new proposed access roads. All known production facilities are shown on these two maps.
5. Location and Type of Water Supply - Water for the proposed project will be obtained from 28-6 Water Well.
6. Source of Construction Materials - No additional materials will be required to build either the access road or the proposed location.
7. Methods of Handling Waste Materials - All garbage and trash materials will be put into a burn pit shown on the attached Location Plat No. 1. When clean-up operations are begun on the proposed project, the burn pit with its refuse will be buried to a depth of at least three feet (3'). A latrine, the location of which is also shown on Plat No. 1,

7. cont'd. will be provided for human waste. If large amounts of liquids are left in the reserve pit after completion of the project, the pit will be fenced until the liquids have had adequate time to dry. The location clean-up will not take place until such time as the reserve pit can be properly covered over to prevent run-off from carrying any of these materials into the watershed. No earthen pit will be located on natural drainages; all earthen pits will be so constructed as to prevent leakage from occurring.
8. Ancillary Facilities - No camps or airstrips will be associated with this project.
9. Wellsite Layout - Please refer to the attached Plat No. 1.
10. Plans for Restoration of the Surface - After completion of the proposed project, the location will be cleaned and leveled. The location will be left in such a condition that will enable reseeding operations to be carried out. Seed mixture as designated by the responsible government agency will be used. The reseeding operation will be performed during the time period set forth by the regulatory body. The location production equipment will be painted as designated by the responsible government agency.
11. Other Information - The terrain is rolling mesa top with sage, pinon, juniper and bitter brush growing. Cattle and deer are occasionally seen on the proposed project site.
12. Operator's Representative - W.D. Dawson, PO Box 990, Farmington, NM
13. Certification - I hereby certify that I, or persons under my direct supervision, have inspected the proposed drillsite and access route; that I am familiar with the conditions which presently exist; that the statements made in this plan are, to the best of my knowledge, true and correct; and that the work associated with the operations proposed herein will be performed by El Paso Natural Gas Company and its contractors and sub-contractors in conformity with this plan and the terms and conditions under which it is approved.

L. A. Aimes

L. A. Aimes
Project Drilling Engineer

Operations Plan - San Juan 28-6 Unit #123R

I. Location: 1520'N, 1540'E, Section 16, T-28-N, R-6-W, Rio Arriba County, NM

Field: Basin Dakota

Elevation: 6709'GR

II. Geology:

A. Formation Tops:	Surface	San Jose	Menefee	5420'
	Ojo Alamo	2755'	Point Lookout	5745'
	Kirtland	2855'	Gallup	6455'
	Fruitland	3305'	Greenhorn	7691'
	Pic.Cliffs	3555'	Graneros	7754'
	Lewis	3680'	Dakota	7900'
	Mesa Verde	5324'	Total Depth	8040'

B. Logging Program: Induction Electric and Gamma Ray Density at TD.

C. Coring: none

III. Drilling:

A. Mud Program: mud from surface to Total Depth.

IV. Materials:

A. Casing Program:	<u>Hole Size</u>	<u>Depth</u>	<u>Csg.Size</u>	<u>Wt.&Grade</u>
	13 3/4"	200'	9 5/8"	36.0# H-40
	8 3/4"	6445'	4 1/2"	10.5# K-55
	7 7/8"	6500'	4 1/2"	10.5# K-55
	7 7/8"	8040'	4 1/2"	11.6# K-55

B. Float Equipment: 9 5/8" surface casing - cement guide shoe

4 1/2" production casing - guide shoe and self-fill insert valve
Two multiple stage cementers equipped for three stage cementing.
Set tool for second stage at 6345' and tool for third stage at 3780'. Run 20 centralizers spaced as follows: one on each of the bottom 8 joints, one below each stage tool, and five above each stage tool spaced every other joint.

C. Tubing: 8040' of 2 3/8", 4.7#, J-55 tubing, common pump seating nipple and Baker expendable check valve with drill type guide.

D. Wellhead Equipment: 9 5/8" x 10" 2000 casing head with 4 1/2" casing hanger, 10" 2000 x 6" 2000 xmas tree with 2 3/8" tubing hanger. Wellhead representative to set all slips and cut off casing.

V. Cementing:

Surface casing (13 3/4" x 9 5/8") - use 190 sks. of Class "B" cement with 1/4# gel-flake per sack and 3% calcium chloride (224 cu.ft. of slurry, 100% excess to circulate). WOC 12 hours. Test to 600#/30 min.

Operations Plan - San Juan 28-6 Unit #123R

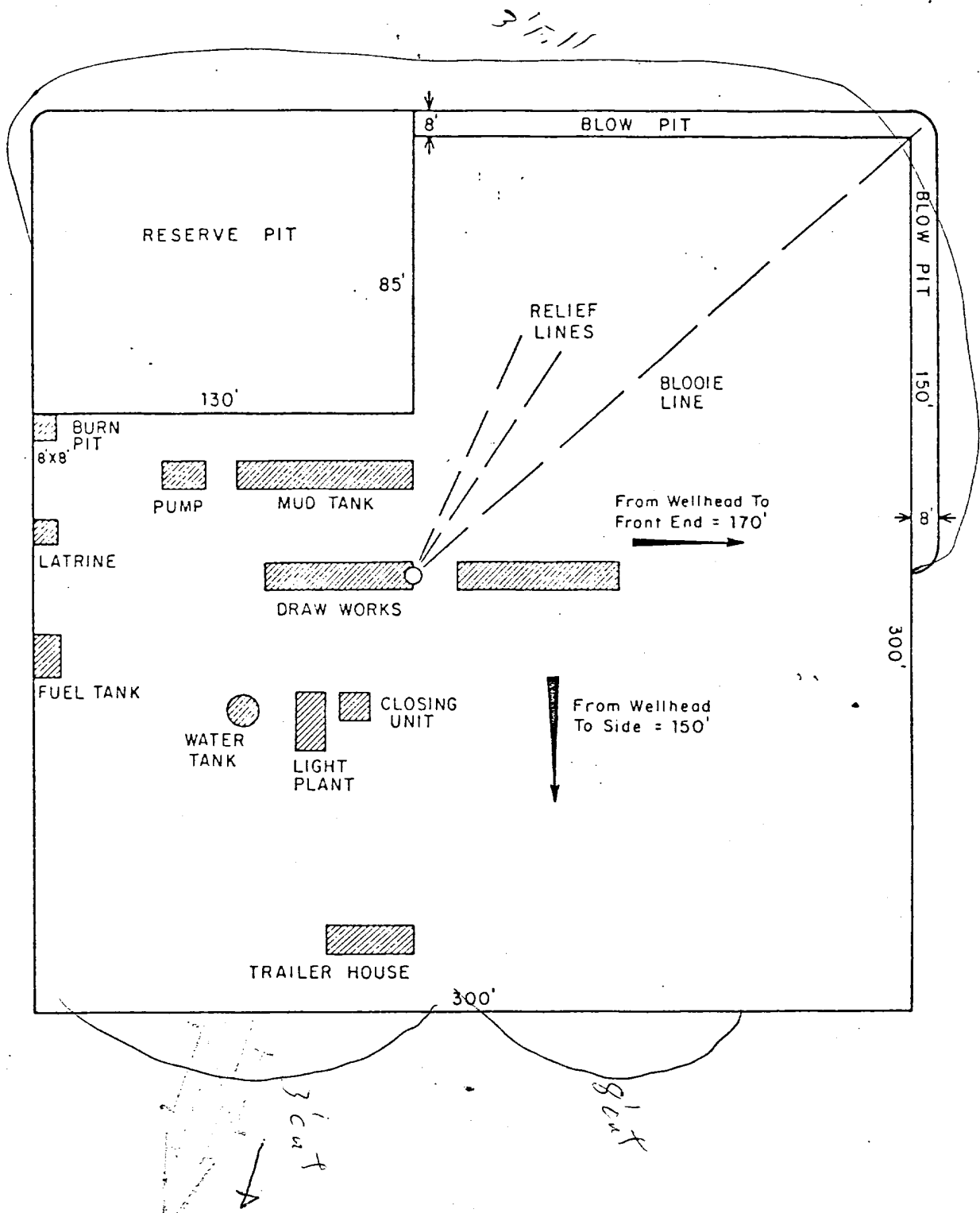
V. Cementing, cont'd.

Production casing - (8 3/4 & 7 7/8" x 4 1/2")


First stage - use 201 sks. of 65/35 Class "B" Pozmix with 6% gel and 2% calcium chloride mixed with 8.3 gallons water per sack followed by 80 sks. 50/50 Class "B" Pozmix with 2% gel, 2% calcium chloride and 1/4# fine tuf-plug per cu.ft. (452 cu.ft. of slurry, 25% excess to cover the Gallup).

Second stage - circulate mud for 2 hours, then cement with 310 sks. of 65/35 Class "B" Pozmix with 6% gel and 2% calcium chloride and 8.3 gallons of water per sack (502 cu.ft. of slurry, 60% excess to cover the Mesa Verde).

Third stage - circulate mud for 2 hours, then cement using 311 sks. Class "B" Pozmix with 6% gel and 2% calcium chloride mixed with 8.3 gallons water per sack (504 cu.ft. of slurry, 60% excess to fill to base of Ojo Alamo). Run temperature survey on top stage only at 8 hours. WOC 18 hours.



PRT.		SEP.	DATE	TO	W.O.
ENG. REC.		DATE			
DRAWN		J L H. 8-16-78			
CHECKED					
CHECKED					
PROJ. APP.					
DESIGN					

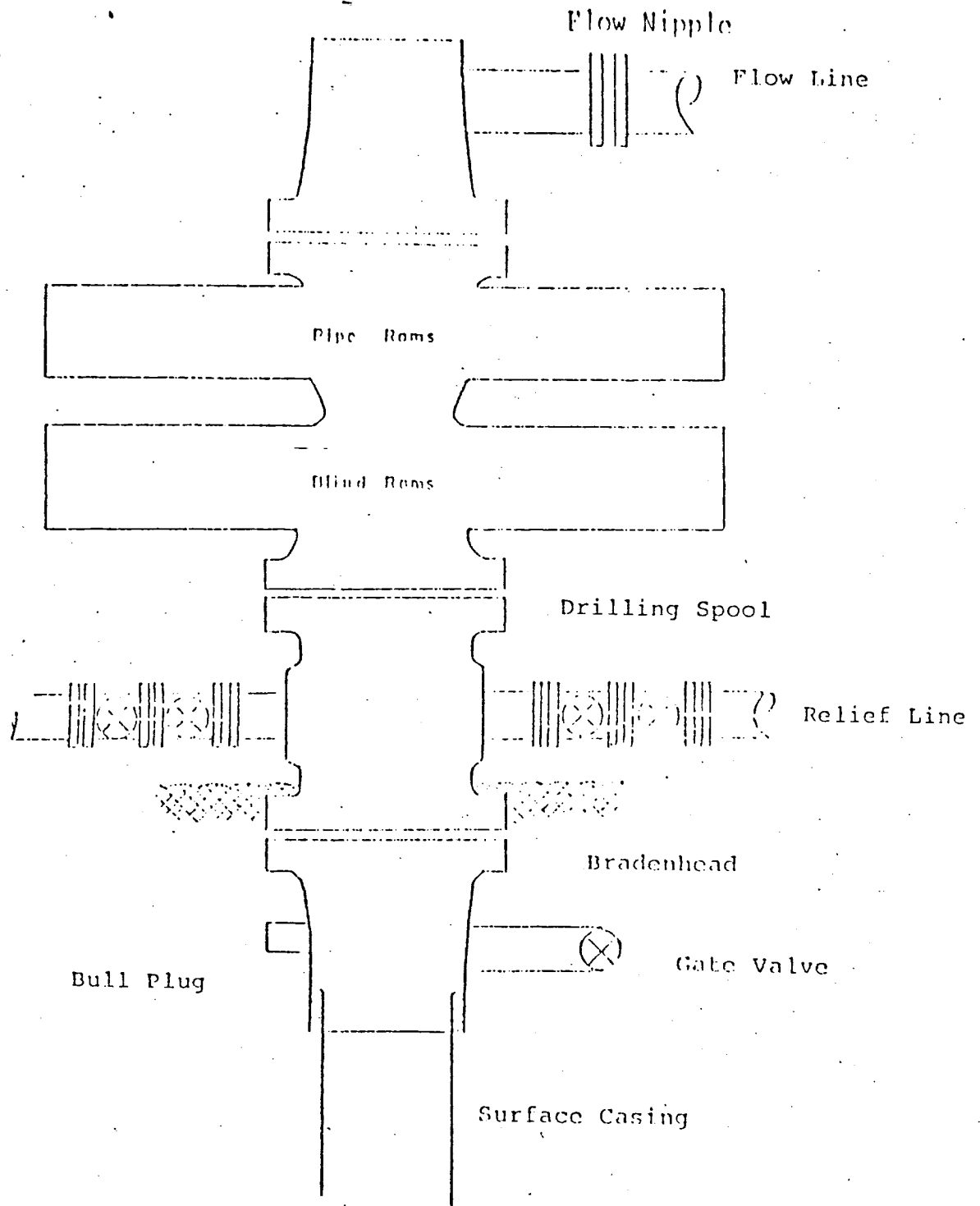

El Paso Natural Gas Company
TYPICAL LOCATION PLAT FOR
MESAVERDE OR DAKOTA DRILL SITE

SCALE: 1" = 50'

DWG. NO.

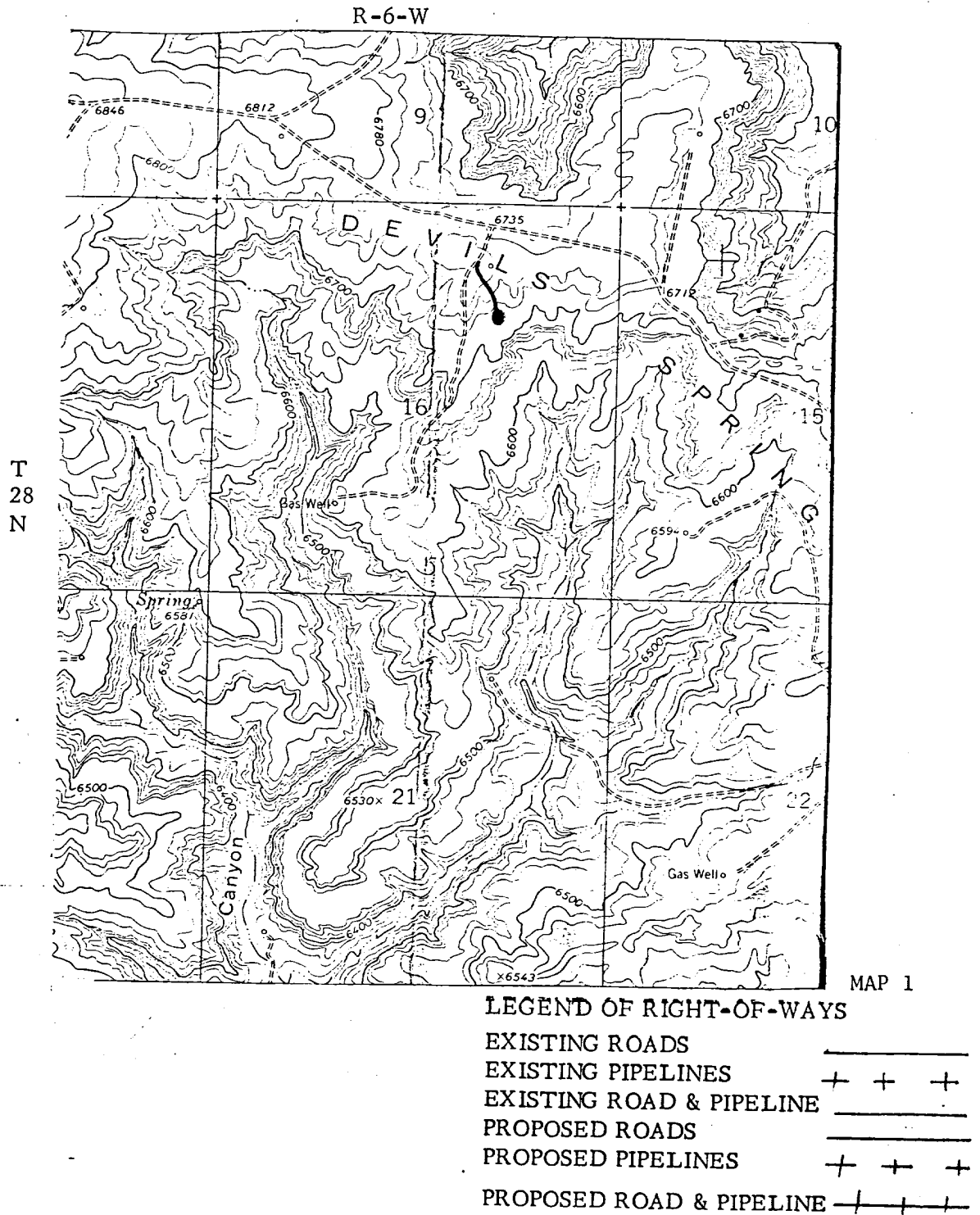
RE

Typical B.O.P. Installation
for Dakota Well



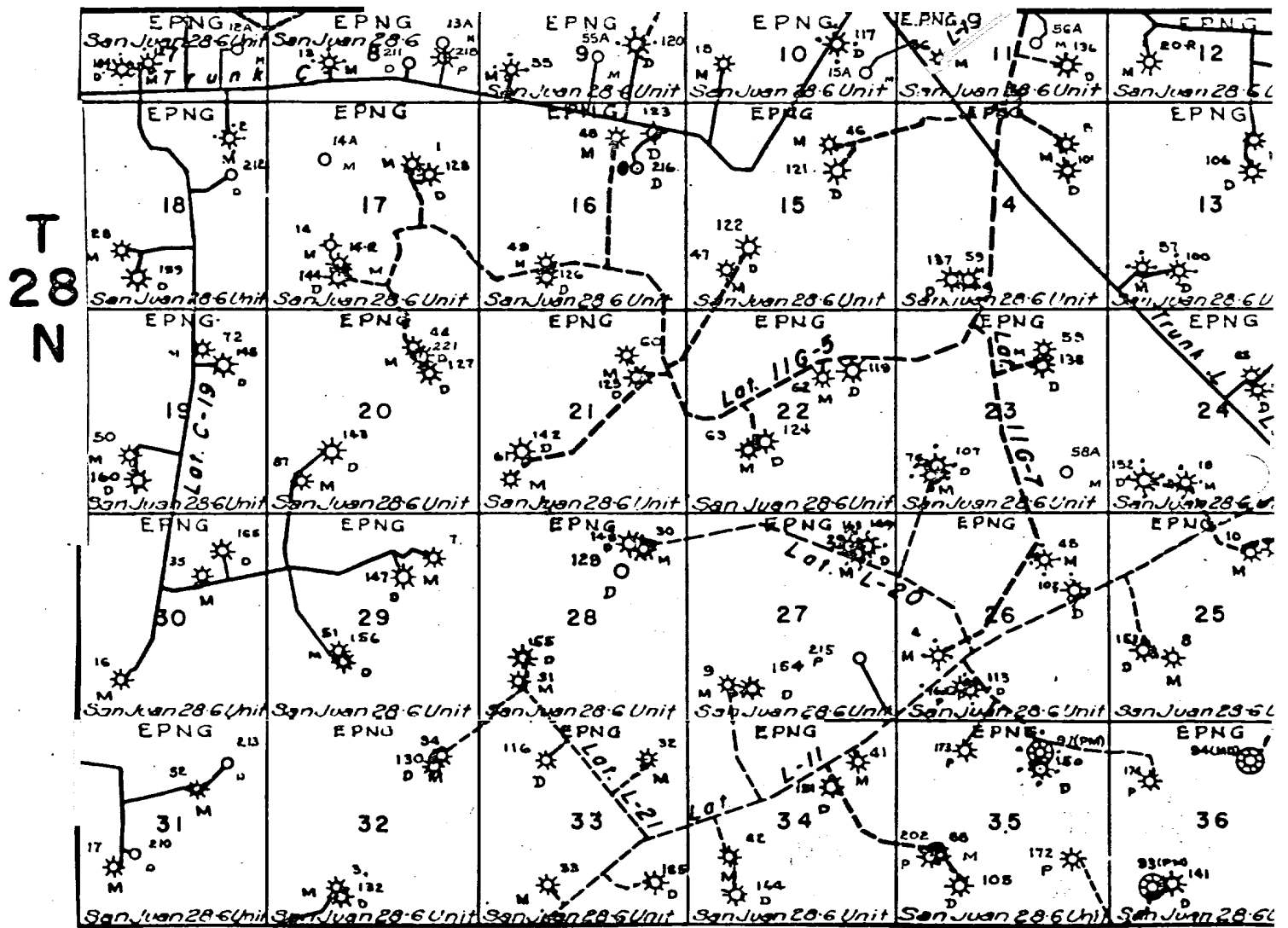
Series 900 Double Gate BOP, rated
at 3000 psi Working Pressure
When gas drilling operations begin a Shaffer type
50 or equivalent rotating head is installed on top of
the flow nipple and the flow line is converted into
a blowie line.

El Paso Natural Gas Company
 San Juan 28-6 Unit 123-R
 NE 16-28-6



El Paso Natural Gas Company
San Juan 28-6 Unit #123-R
NE 16-28-6

R-6-W



MAP 2

Proposed Location