

UNITED STATES
DEPARTMENT OF THE INTERIOR
GEOLOGICAL SURVEY30-039-22348
Form approved.
Budget Bureau No. 42-R1425.~~30-039-22348~~

APPLICATION FOR PERMIT TO DRILL, DEEPEN, OR PLUG BACK

1a. TYPE OF WORK

DRILL ☒DEEPEN ☐PLUG BACK ☐

b. TYPE OF WELL

OIL
WELL ☐GAS
WELL ☒

OTHER

SINGLE
ZONE ☐MULTIPLE
ZONE ☒

2. NAME OF OPERATOR

El Paso Natural Gas Company

3. ADDRESS OF OPERATOR

PO Box 289, Farmington, NM 87401

4. LOCATION OF WELL (Report location clearly and in accordance with any State requirements.*)

At surface

1520'N, 820'W

At proposed prod. zone

14. DISTANCE IN MILES AND DIRECTION FROM NEAREST TOWN OR POST OFFICE*

11.5 miles Northeast of Blanco, NM

15. DISTANCE FROM PROPOSED*

LOCATION TO NEAREST

PROPERTY OR LEASE LINE, FT.

(Also to nearest drlg. unit line, if any)

820'

16. NO. OF ACRES IN LEASE

Unit

18. DISTANCE FROM PROPOSED LOCATION*

TO NEAREST WELL, DRILLING, COMPLETED,
OR APPLIED FOR, ON THIS LEASE, FT.

2960'

19. PROPOSED DEPTH

5505'

17. NO. OF ACRES ASSIGNED
TO THIS WELL

w/ 305.76 & 152.86

20. ROTARY OR CABLE TOOLS

Rotary

21. ELEVATIONS (Show whether DF, RT, GR, etc.)

6304'GR

22. APPROX. DATE WORK WILL START*

23.

PROPOSED CASING AND CEMENTING PROGRAM

| SIZE OF HOLE | SIZE OF CASING | WEIGHT PER FOOT | SETTING DEPTH | QUANTITY OF CEMENT |
|--------------|----------------|-----------------|---------------|-------------------------------|
| 13 3/4" | 9 5/8" | 36.0# | 200' | 224 cu.ft. to circulate |
| 8 3/4" | 7" | 20.0# | 3180' | 393 cu.ft. to cover Ojo Alamo |
| 6 1/4" | 4 1/2" liner | 10.5# | 3030-5505' | 432 cu.ft. to circ. liner |

Selectively perforate and sandwater fracture the Mesa Verde and
Pictured Cliffs formation.

A 3000 psi WP and 6000 psi test double gate preventer equipped with
blind and pipe rams will be used for blow out prevention on this well.

This gas is dedicated.

The W/2 of Section 30 is dedicated to this well.

IN ABOVE SPACE DESCRIBE PROPOSED PROGRAM: If proposal is to deepen or plug back, give data on present productive zone and proposed new productive zone. If proposal is to drill or deepen directionally, give pertinent data on subsurface locations and measured and true vertical depths. Give blowout preventer program, if any.

24.

SIGNED

A. G. Lucio

TITLE

Drilling Clerk

DATE

9-20-79

(This space for Federal or State office use)

PERMIT NO.

APPROVAL DATE

APPROVED BY

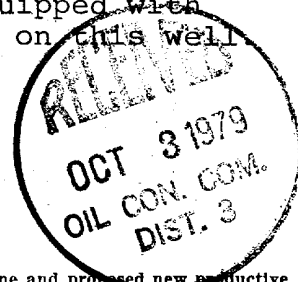
TITLE

DATE

CONDITIONS OF APPROVAL, IF ANY:

NW 1/4 both zones
Unit agreement

*See Instructions On Reverse Side

U. S. GEOLOGICAL SURVEY
FARMINGTON, N.M.

OCT 01 1979

NEW MEXICO OIL CONSERVATION COMMISSION
W. LOCATION AND ACREAGE DEDICATION PLAT

Form C-102
Supersedes C-128
Effective 1-1-65

All distances must be from the outer boundaries of the Section.

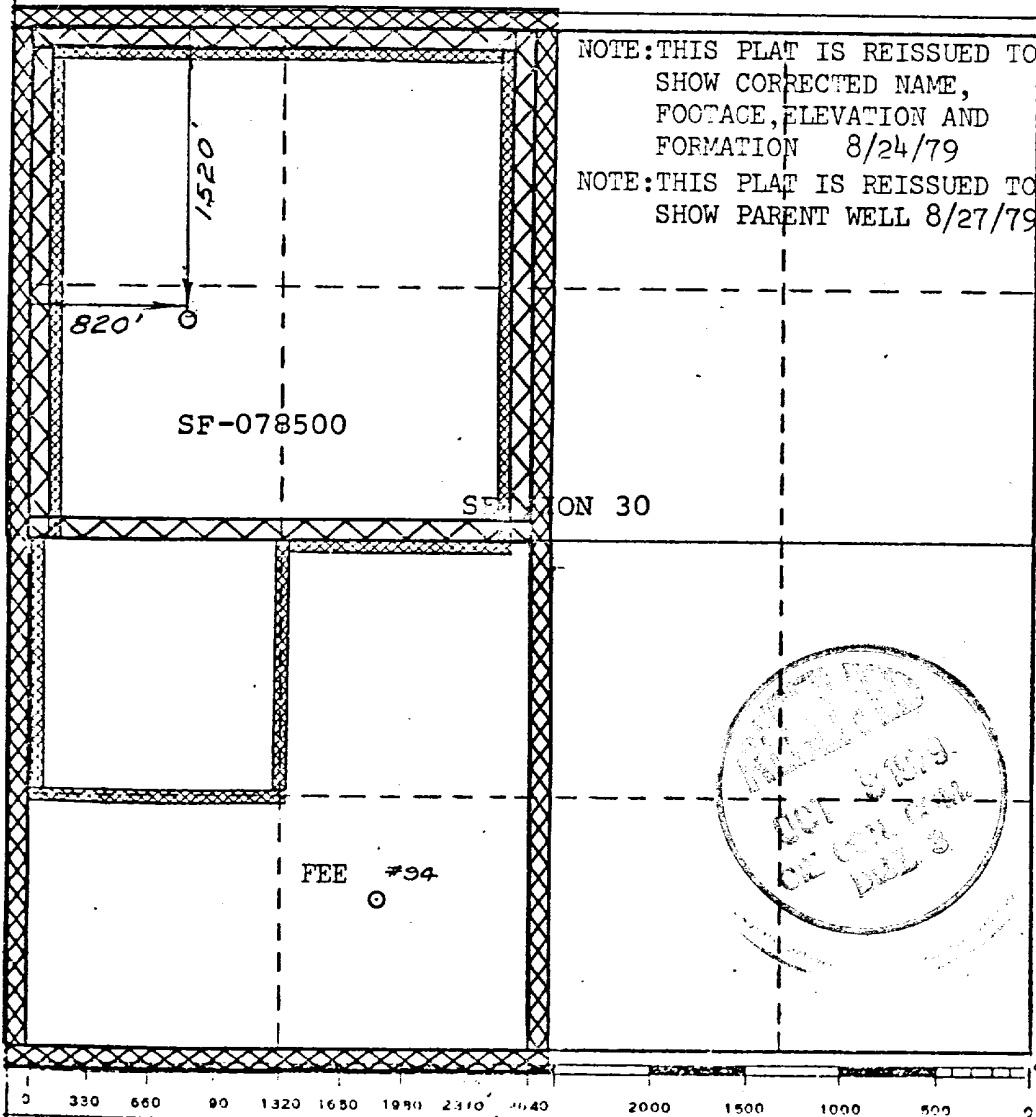
| | | | | |
|-------------------------------------------------------------------------------------------------------------------------------|----------------------------------------------------------|-----------------------------------------------------------------------|---------------------|-------------------------------------------------------|
| Operator EL PASO NATURAL GAS COMPANY | | Lease SAN JUAN 28-7 UNIT (SF-078500) | | Well No. 94A |
| Unit Letter E | Section 30 | Township 28-N | Range 7-W | County RIO ARriba |
| Actual Footage Location of Well: 1520 feet from the NORTH line and 820 feet from the WEST line | | | | |
| Ground Level Elev. 6294 | Producing Formation Mesa Verde-Pictured Cliffs | Pool Blanco Mesa Verde So. Blanco Pictured Cliffs | | Dedicated Acreage 305.76 & 152.86 Acres |

1. Outline the acreage dedicated to the subject well by colored pencil or hachure marks on the plat below.
2. If more than one lease is dedicated to the well, outline each and identify the ownership thereof (both as to working interest and royalty).
3. If more than one lease of different ownership is dedicated to the well, have the interests of all owners been consolidated by communitization, unitization, force-pooling, etc?

☒ Yes ☐ No If answer is "yes," type of consolidation Unitization

If answer is "no," list the owners and tract descriptions which have actually been consolidated. (Use reverse side of this form if necessary.)

No allowable will be assigned to the well until all interests have been consolidated (by communitization, unitization, forced-pooling, or otherwise) or until a non-standard unit, eliminating such interests, has been approved by the Commission. NOTE: THIS PLAT IS REISSUED TO SHOW CORRECTED DEDICATION. 7-25-74



NOTE: THIS PLAT IS REISSUED TO SHOW CORRECTED NAME, FOOTAGE, ELEVATION AND FORMATION 8/24/79
NOTE: THIS PLAT IS REISSUED TO SHOW PARENT WELL 8/27/79

CERTIFICATION

I hereby certify that the information contained herein is true and complete to the best of my knowledge and belief.

D. P. Guico

Name
Drilling Clerk
Position
El Paso Natural Gas Co.
Company
September 20, 1979
Date

I hereby certify that the well location shown on this plat was plotted from field notes of actual surveys made by me or under my supervision, and that the same is true and correct to the best of my knowledge and belief.

Date Surveyed
JULY 22, 1974

Registered Professional Engineer and/or Land Surveyor

Paul Chilcote
Certificate No. **1760**

Multi-Point Surface Use Plan

San Juan 28-7 Unit #94A

1. Existing Road - Please refer to Map No. 1 which shows the existing roads. New roads which will be required have been marked on this map. All existing and new roads will be properly maintained during the duration of this project.
2. Planned Access Roads - Please refer to Map No. 1. The grade of the access roads will be consistent with that of the local terrain. The road surface will not exceed twenty feet (20') in width. Upon completion of the project, the access road will be adequately drained to control soil erosion. Drainage facilities may include ditches, water bars, culverts or any other measure deemed necessary by trained Company personnel to insure proper drainage. Gates and/or cattleguards will be installed if necessary.
3. Location of Existing Wells - Please refer to Map No. 2.
4. Location of Tank Batteries, Production Facilities, and Production Gathering and Service Lines - Please refer to Maps No. 1 and No. 2. Map No. 2 shows the existing gas gathering lines. Map No. 1 shows the existing roads and new proposed access roads. All known production facilities are shown on these two maps.
5. Location and Type of Water Supply - Water for the proposed project will be obtained from Manzaneras Mesa Water Well.
6. Source of Construction Materials - No additional materials will be required to build either the access road or the proposed location.
7. Methods of Handling Waste Materials - All garbage and trash materials will be put into a burn pit shown on the attached Location Plat No. 1. When clean-up operations are begun on the proposed project, the burn pit with its refuse will be buried to a depth of at least three feet (3'). A latrine, the location of which is also shown on Plat No. 1,

September 20, 1979

Operations Plan
San Juan 28-7 Unit #94A

I. Location: 1520'N, 820'W, Section 30, T-28-N, R-7-W, Rio Arriba County, NM

Field: Blanco PC & Blanco MV

Elevation: 6304'GR

II. Geology:

| | | | | |
|--------------------|------------|----------|---------------|-------|
| A. Formation Tops: | Surface | San Jose | Lewis | 2978' |
| | Ojo Alamo | 1958' | Mesa Verde | 4509' |
| | Kirtland | 2056' | Menefee | 4599' |
| | Fruitland | 2586' | Point Lookout | 5054' |
| | Pic.Cliffs | 2872' | Total Depth | 5505' |

B. Logging Program: I-ES and GR-Density at 3180'.
GR-Ind. and GR-Density at Total Depth.

C. Coring Program: none

D. Natural Gauges: 4500', 4590', 5045' and at Total Depth.
Also gauge any noticeable increase in gas. Record all gauges in daily drilling report and on morning report.

III. Drilling:

A. Mud Program: mud from surface to 3180'. Gas from intermediate casing to Total Depth.

IV. Materials:

| | | | | |
|--------------------|------------------|--------------|--------------------|----------------------|
| A. Casing Program: | <u>Hole Size</u> | <u>Depth</u> | <u>Casing Size</u> | <u>Wt.&Grade</u> |
| | 13 3/4" | 200' | 9 5/8" | 36.0# K-55 |
| | 8 3/4" | 3180' | 7" | 20.0# K-55 |
| | 6 1/4" | 3030-5505' | 4 1/2" | 10.5# K-55 |

B. Float Equipment: 9 5/8" surface casing - cement guide shoe.

7" intermediate casing - cement guide shoe and self-fill insert float valve, 5 stabilizers every other joint above shoe. Run float two joints above shoe.

4 1/2" liner - 4 1/2" liner hanger with neoprene packoff & PBR. Geyser shoe and flapper type float collar

C. Tubing: 5505' of 2 3/8", 4.7#, J-55 8rd EUE tubing with a common pump seating nipple one joint above bottom. Tubing will be open ended.
2970' of 1 1/4", 8rd, 2.33# IJ tubing with a common pump seating nipple and pump out plug above perforated orange peeled joint.

D. Wellhead Equipment: 10" 2000 x 9 5/8" casing head. 10" x 7" casing hanger. 10" 2000 x 6" 2000 dual tubing head.

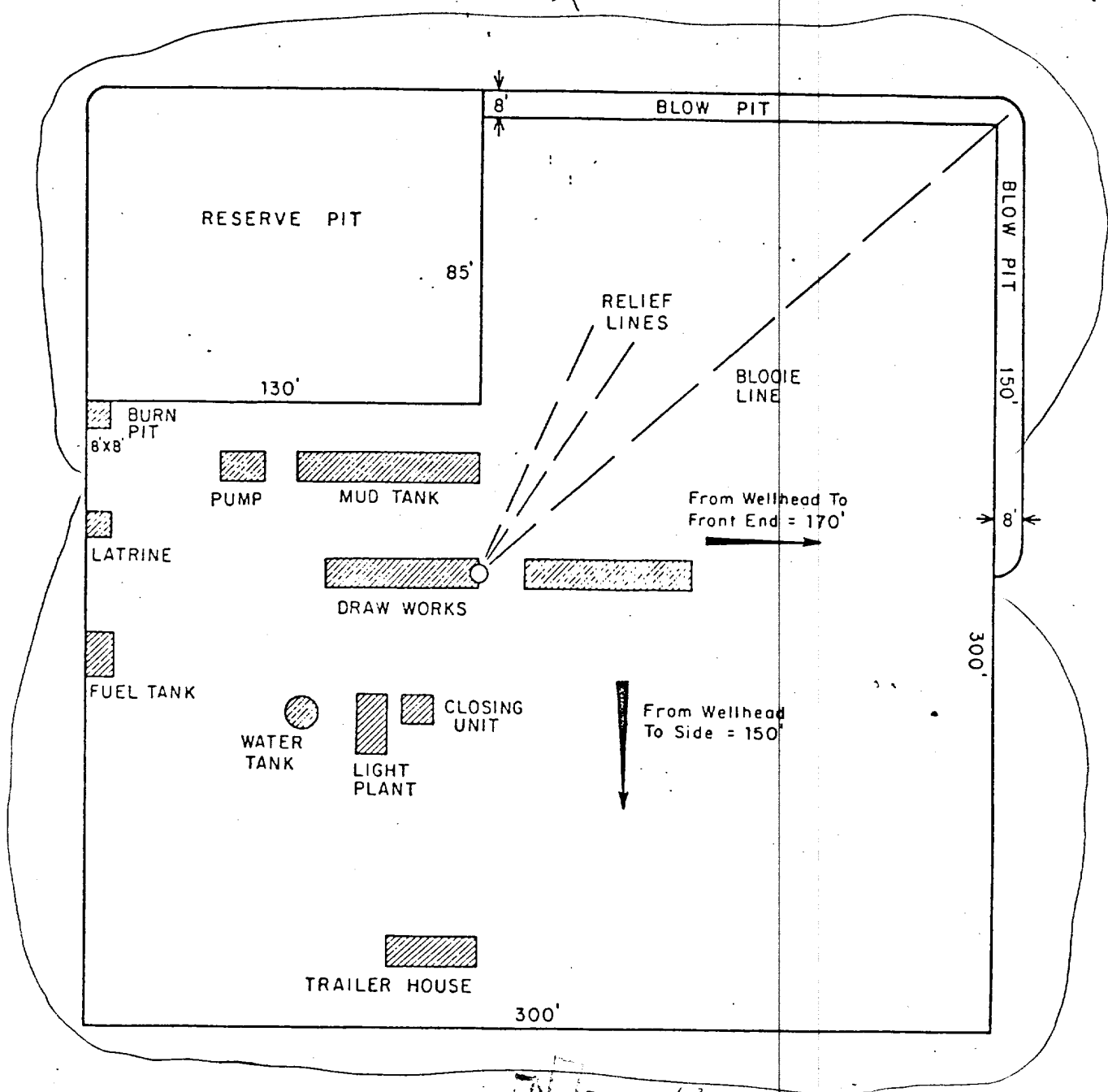
Operations Plan - San Juan 28-7 Unit #94A

V. Cementing:

9 5/8" surface casing - use 190 sks. of Class "B" cement with 1/4# gel-flake per sack and 3% calcium chloride (224 cu.ft. of slurry, 100% excess to circulate to surface). WOC 12 hours. Test casing to 600#/30 minutes.

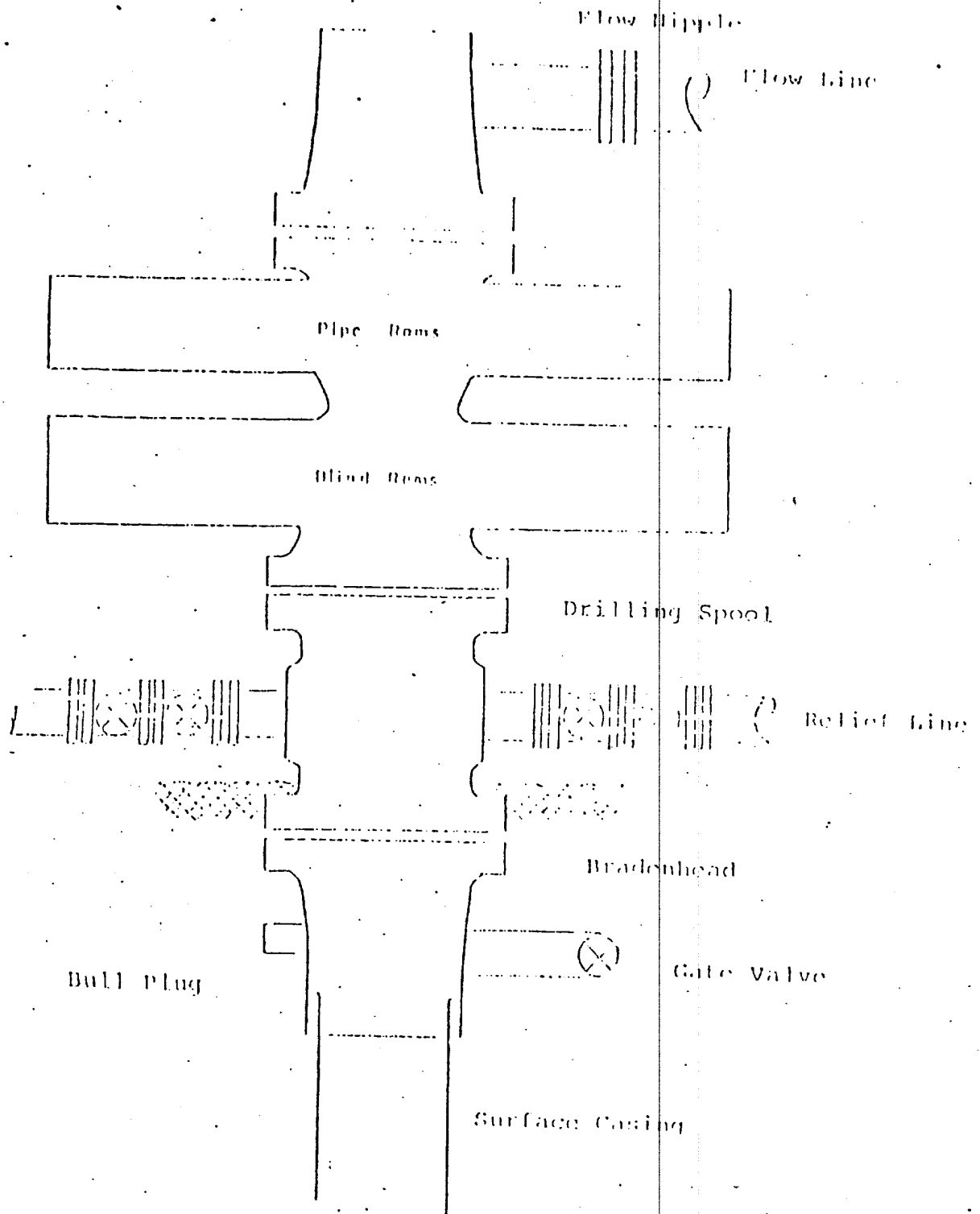
7" intermediate casing - use 170 sks. of 65/35 Class "B" Poz with 6% gel and 2% calcium chloride (8.3 gallons of water per sack) followed by 100 sks. of Class "B" with 2% calcium chloride (393 cu.ft. of slurry, 50% excess to cover Ojo Alamo). Run temperature survey at 8 hours. WOC 12 hours. Test casing to 1200#/30 minutes.

4 1/2" liner - precede cement with 20 barrels of gel water (2 sks. gel) Cement with 310 sks. of 50/50 Class "B" Poz with 2% gel, 0.6% Halad-9, 6.25# gilsonite plus 1/4# Flocele per sack (432 cu.ft. of slurry, 70% excess to circulate liner). WOC 18 hours.



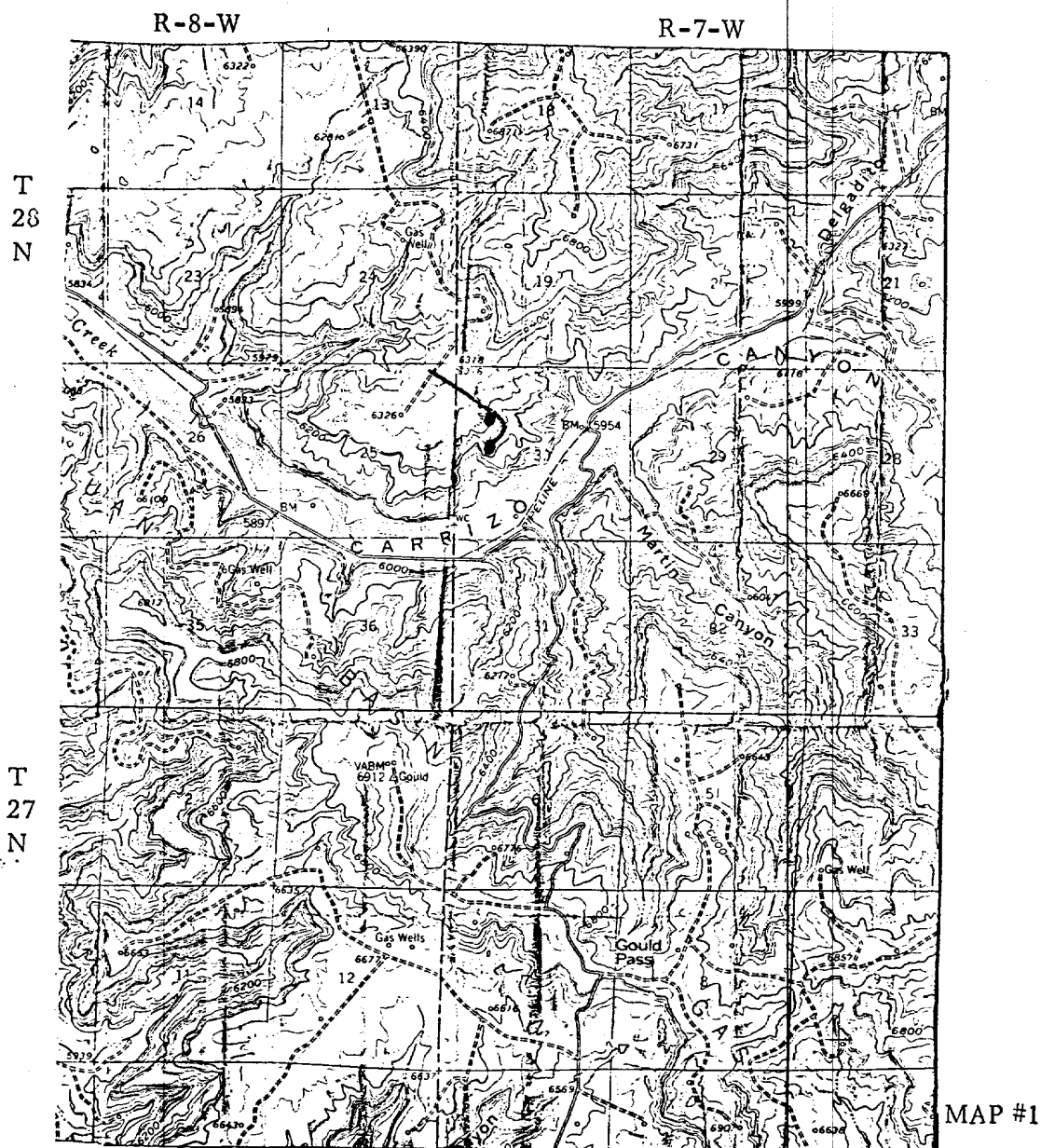
| | | | | | | | | | | |
|------|------|------|----|------|-----------|----------|---------|----------------------------------------------------------------------------------------------------------------------------------|------|----|
| | | | | | ENG. REC. | | DATE | <div> El Paso Natural Gas Company TYPICAL LOCATION PLAT FOR MESAVERDE OR DAKOTA DRILL SITE </div> | | |
| | | | | | DRAWN | J. L. H. | 8-16-78 | | | |
| | | | | | CHECKED | | | | | |
| | | | | | CHECKED | | | | | |
| | | | | | PROJ. APP | | | | | |
| PRT. | SEP. | DATE | TO | W.O. | DESIGN | | | SCALE: 1" = 50' | DWG. | RI |

Series 900 Double Gate ROP for Mega Verde Well



Series 900 Double Gate ROP, rated
at 3000 psi Working Pressure
When gas drilling operations begin a Shaffer type 50
or equivalent rotating head is installed on top of the
flow nipple and the flow line is converted into a blowie line

EL PASO NATURAL GAS COMPANY
San Juan 28-7 Unit #94A
NW 30-28-7



LEGEND OF RIGHT-OF-WAYS

| | |
|--------------------------|-------|
| EXISTING ROADS | — |
| EXISTING PIPELINES | — |
| EXISTING ROAD & PIPELINE | + + + |
| PROPOSED ROADS | - - - |
| PROPOSED PIPELINES | - - - |
| PROPOSED ROAD & PIPELINE | + + + |

R-7-W

