

UNITED STATES
DEPARTMENT OF THE INTERIOR
GEOLOGICAL SURVEY30-039-23350
5. LEASE DESIGNATION AND SERIAL NO.
SF 079290

APPLICATION FOR PERMIT TO DRILL, DEEPEN, OR PLUG BACK

1a. TYPE OF WORK

DRILL ☒DEEPEN ☐PLUG BACK ☐

b. TYPE OF WELL

OIL
WELL ☐GAS
WELL ☒OTHER ☐SINGLE
ZONE ☒MULTIPLE
ZONE ☐

2. NAME OF OPERATOR

El Paso Natural Gas company

3. ADDRESS OF OPERATOR

Box 4289, Farmington, New Mexico 87499

4. LOCATION OF WELL (Report location clearly and in accordance with any State requirements*)

At surface

1170'S, 1800'E

At proposed prod. zone

RECEIVED
NOV 10 1983
BUREAU OF LAND MANAGEMENT
FARMINGTON RESOURCE AREA

14. DISTANCE IN MILES AND DIRECTION FROM NEAREST TOWN OR POST OFFICE

7 Miles SW of Navajo City

15. DISTANCE FROM PROPOSED*

LOCATION TO NEAREST
PROPERTY OR LEASE LINE, FT.
(Also to nearest drlg. unit line, if any)

1170'

18. DISTANCE FROM PROPOSED*
TO NEAREST WELL, DRILLING, COMPLETED,
OR APPLIED FOR, ON THIS LEASE, FT.

450'

16. NO. OF ACRES IN LEASE

Unit

19. PROPOSED DEPTH

7905'

17. NO. OF ACRES ASSIGNED
TO THIS WELL

E 320.00

20. ROTARY OR CABLE TOOLS

Rotary

21. ELEVATIONS (Show whether DF, RT, GR, etc.)

6650' GL

DRILLING OPERATIONS AUTHORIZED ARE

SUBJECT TO COMPLIANCE WITH ATTACHED

"GENERAL REQUIREMENTS" CEMENTING PROGRAM

22. APPROX. DATE WORK WILL START*

This action is subject to administrative
appeal pursuant to 30 CFR 290.
QUANTITY OF CEMENT

SIZE OF HOLE	SIZE OF CASING	WEIGHT PER FOOT	SETTING DEPTH	QUANTITY OF CEMENT
12 1/4"	9 5/8"	32.3#	200'	130 cu. ft. circulated to surf.
8 3/4"	7"	20.0#	3745'	369 cu. ft. to cover ojo Alamo
6 1/4"	4 1/2"	10.5# & 11.6#	7905'	640 cu. ft. to fill to intermedi Casing

Selectively perforate and sand water fracture the Dakota formation.

A 3000 psi WP & 6000 psi test double gate preventor equipped with blind and pipe
rams will be used for blow-out prevention on this well.

This gas is dedicated

The E/2 of SEction 13 is dedicated to this well.

RECEIVED
NOV 29 1983OIL CON. DIV.
DIST. 3IN ABOVE SPACE DESCRIBE PROPOSED PROGRAM: If proposal is to deepen or plug back, give data on present productive zone and proposed new productive
zone. If proposal is to drill or deepen directionally, give pertinent data on subsurface locations and measured and true vertical depths. Give blowout
preventer program, if any.

24.

SIGNED

D. G. Buico

TITLE

Drilling Clerk

DATE November 10, 1983

(This space for Federal or State office use)

PERMIT NO.

APPROVAL DATE

APPROVED
AS AMENDED
DATE

APPROVED BY

TITLE

CONDITIONS OF APPROVAL, IF ANY:

ch

NMOCC

NOV 23 1983

M. MILLENBACH
AREA MANAGER

OIL CONSERVATION DIVISION

STATE OF NEW MEXICO
ENERGY AND MINERALS DEPARTMENTP. O. BOX 2088
SANTA FE, NEW MEXICO 87501Form C-102
Revised 10-1-78

All distances must be from the outer boundaries of the Section.

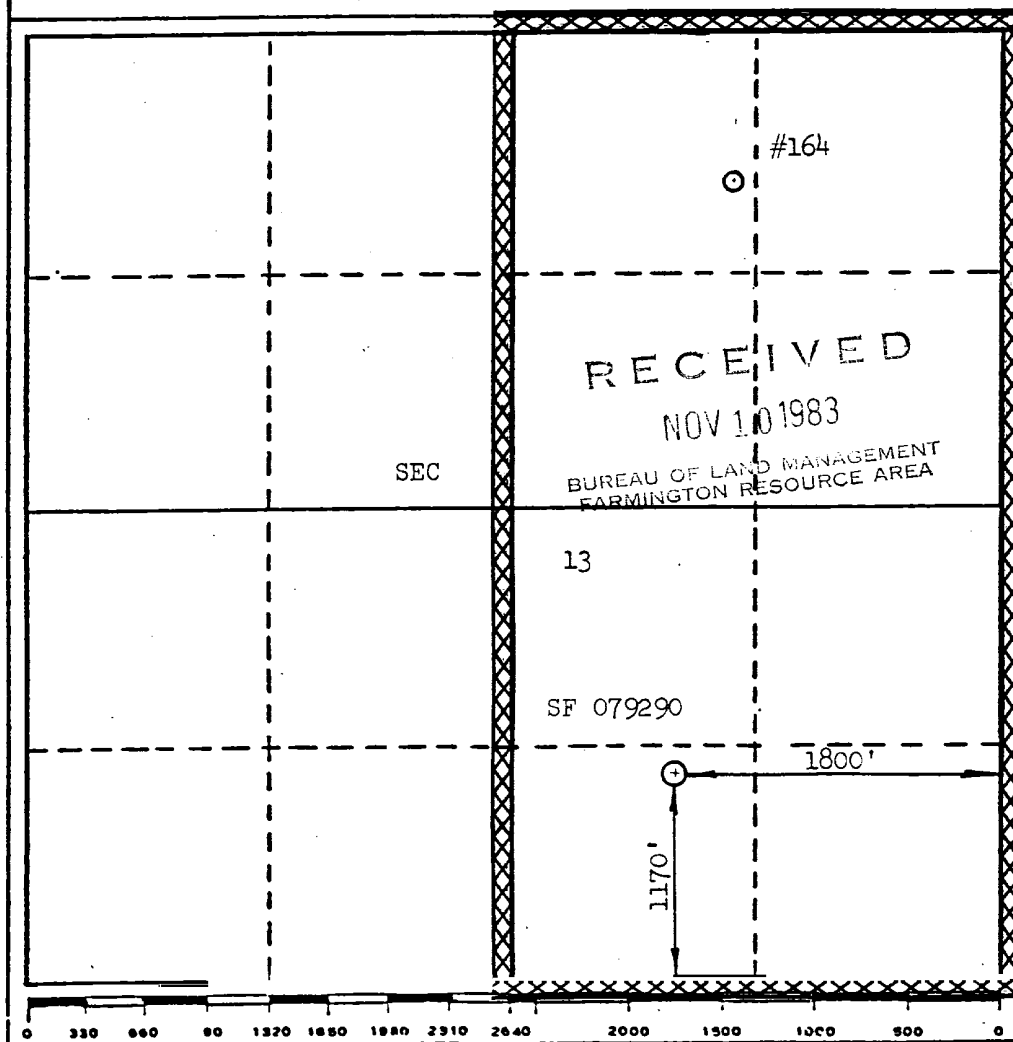
Operator EL PASO NATURAL GAS COMPANY			Lease San Juan 28-7 Unit (SF 079290)		Well No. 164E
Unit Letter 0	Section 13	Township 28-N	Range 7-W	County Rio Arriba	
Actual Footage Location of Well: 1170 feet from the South line and 1800 feet from the East line					
Ground Level Elev. 6650	Producing Formation Dakota		Pool Basin Dakota		Dedicated Acreage: 320.00 Acres

1. Outline the acreage dedicated to the subject well by colored pencil or hachure marks on the plat below.
2. If more than one lease is dedicated to the well, outline each and identify the ownership thereof (both working interest and royalty).
3. If more than one lease of different ownership is dedicated to the well, have the interests of all owners been consolidated by communitization, unitization, force-pooling, etc?

☒ Yes ☐ No If answer is "yes," type of consolidation UnitizationRECEIVED
NOV 29 1983
OIL CON. DIV.
DIST. 3

If answer is "no," list the owners and tract descriptions which have actually been consolidated. (Use reverse side of this form if necessary.)

No allowable will be assigned to the well until all interests have been consolidated (by communitization, unitization, forced-pooling, or otherwise) or until a non-standard unit, eliminating such interests, has been approved by the Division



CERTIFICATION

I hereby certify that the information contained herein is true and complete to the best of my knowledge and belief.

A. G. Quisco
NameDrilling Clerk
PositionEl Paso Natural Gas Co.
Company
November 10, 1983
Date

I hereby certify that the well location shown on this plat was plotted from field notes of actual surveys made by me or under my supervision, and that the same is true and correct to the best of my knowledge and belief.

Date Surveyed
October 20, 1983Registered Professional Engineer
and/or Land Surveyor*David L. Wilson*
Certificate No.

1760

EL PASO NATURAL GAS COMPANY
San Juan 28-7 Unit #164E
SE 13-28-7

