

UNITED STATES
DEPARTMENT OF THE INTERIOR
BUREAU OF LAND MANAGEMENT

APPLICATION FOR PERMIT TO DRILL, DEEPEN, OR PLUG BACK

1a. TYPE OF WORK

DRILL ☒

DEEPEN ☐

PLUG BACK ☐

b. TYPE OF WELL

OIL
WELL ☐

GAS
WELL ☒

OTHER

SINGLE
ZONE ☒

MULTIPLE
ZONE ☐

2. NAME OF OPERATOR

El Paso Natural Gas Company

3. ADDRESS OF OPERATOR

PO Box 4289, Farmington, NM 87499

4. LOCATION OF WELL (Report location clearly and in accordance with State requirements)

At surface

1135'S, 1565'W

At proposed prod. zone

14. DISTANCE IN MILES AND DIRECTION FROM NEAREST TOWN OR POST OFFICE

13 miles Southwest of Gobernador, NM

15. DISTANCE FROM PROPOSED*

LOCATION TO NEAREST
PROPERTY OR LEASE LINE, FT.
(Also to nearest drlg. unit line, if any)

1135

16. NO. OF ACRES IN LEASE

Unit 515.36

17. NO. OF ACRES ASSIGNED

TO THIS WELL
W 315.36

18. DISTANCE FROM PROPOSED LOCATION*
TO NEAREST WELL, DRILLING, COMPLETED
OR APPLIED FOR, ON THIS LEASE, FT.

500'

19. PROPOSED DEPTH

7730'

20. ROTARY OR CABLE TOOLS

Rotary

21. ELEVATIONS (Show whether DF, RT, GR, etc.)

6707' GL DRILLING OPERATIONS AUTHORIZED ARE

23. SUBJECT TO COMPLIANCE WITH ATTACHED
"GENERAL REQUIREMENTS",
PROPOSED CASING AND CEMENTING PROGRAM

This action is subject to technical and
procedural review pursuant to 43 CFR 3165.3
and appeal pursuant to 43 CFR 3165.4.

SIZE OF HOLE	SIZE OF CASING	WEIGHT PER FOOT	SETTING DEPTH	QUANTITY OF CEMENT
12 1/4"	9 5/8"	36.0#	200'	130 cf circulated
8 3/4"	7"	20.0#	3565'	426 cf cover Ojo Alamo
6 1/4"	4 1/2"	10.5&11.6#	7730'	647 cf fill to inter.

Selectively perforate and sand water fracture the Dakota formation.

A 3000 psi WP and 6000 psi test double gate preventer equipped with
blind and pipe rams will be used for blow out prevention on this well.

This gas is dedicated.

The W/2 of Section 32 is dedicated to this well.

RECEIVED

JUN 19 1985

OIL CON. DIV.
DIST. 3

IN ABOVE SPACE DESCRIBE PROPOSED PROGRAM: If proposal is to deepen or plug back, give data on present productive zone and proposed new productive zone. If proposal is to drill or deepen directionally, give pertinent data on subsurface locations and measured and true vertical depths. Give blowout preventer program, if any.

24. Drilling Clerk
SIGNED Drilling Clerk

TITLE

Drilling Clerk

6-7-85

DATE

(This space for Federal or State office use)

PERMIT NO.

APPROVAL DATE

APPROVED
AS AMENDED

APPROVED BY

TITLE

CONDITIONS OF APPROVAL, IF ANY:

JUN 17 1985

/s/ J. Stan McKee

M. MILLENBACH
AREA MANAGER

*See Instructions On Reverse Side

NEW MEXICO OIL CONSERVATION COMMISSION
WELL LOCATION AND ACREAGE DEDICATION PLAT

Form C-102
Supersedes C-128
Effective 1-1-65

All distances must be from the outer boundaries of the Section.

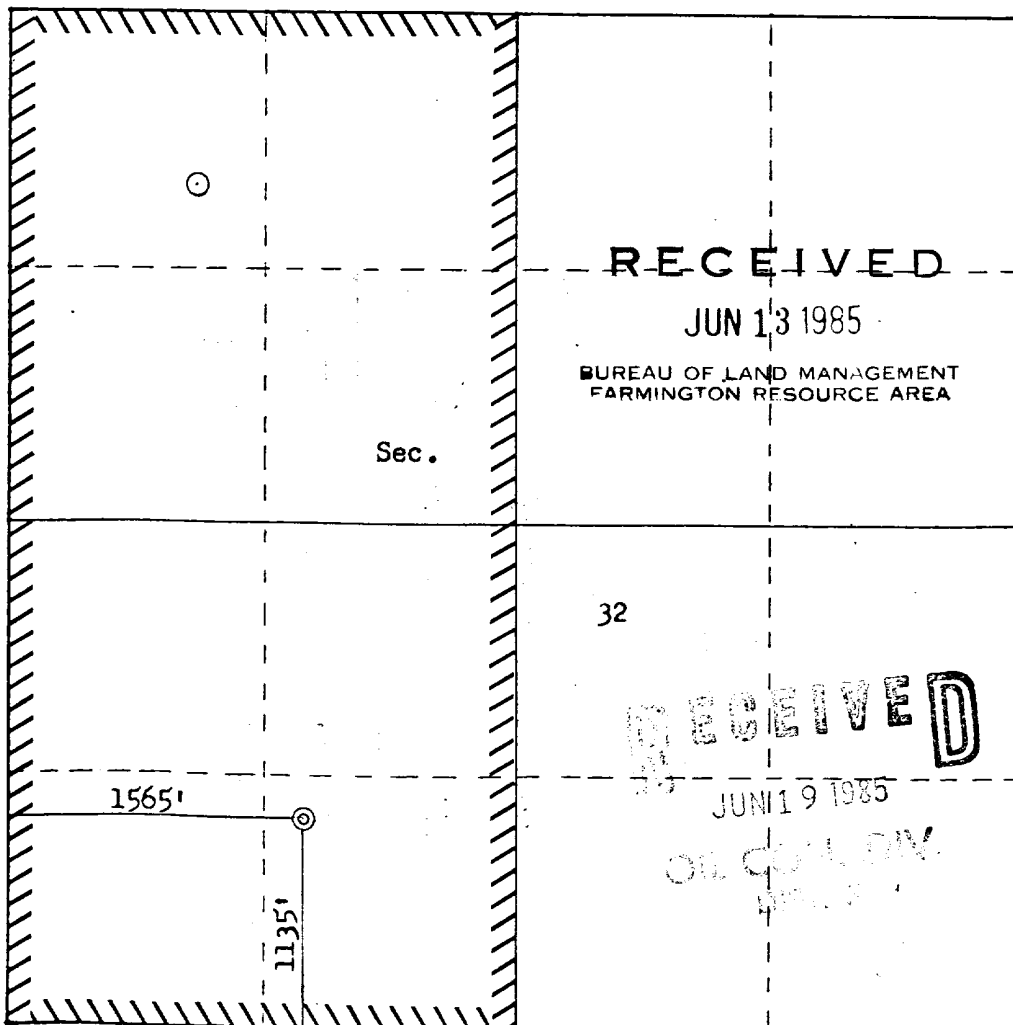
Operator EL PASO NATURAL GAS COMPANY			Lease SAN JUAN 28-7 UNIT (SF 078498A)		Well No. 252E
Unit Letter N	Section 32	Township 28N	Range 7W	County Rio Arriba	
Actual Footage Location of Well: 1135 feet from the South line and 1565 feet from the West line					
Ground Level Elev: 6707	Producing Formation Dakota		Pool Basin		Dedicated Acreage: 315.36 Acres

1. Outline the acreage dedicated to the subject well by colored pencil or hachure marks on the plat below.
2. If more than one lease is dedicated to the well, outline each and identify the ownership thereof (both as to working interest and royalty).
3. If more than one lease of different ownership is dedicated to the well, have the interests of all owners been consolidated by communitization, unitization, force-pooling, etc?

☒ Yes ☐ No If answer is "yes," type of consolidation Unitization

If answer is "no," list the owners and tract descriptions which have actually been consolidated. (Use reverse side of this form if necessary.)

No allowable will be assigned to the well until all interests have been consolidated (by communitization, unitization, forced-pooling, or otherwise) or until a non-standard unit, eliminating such interests, has been approved by the Commission.



CERTIFICATION

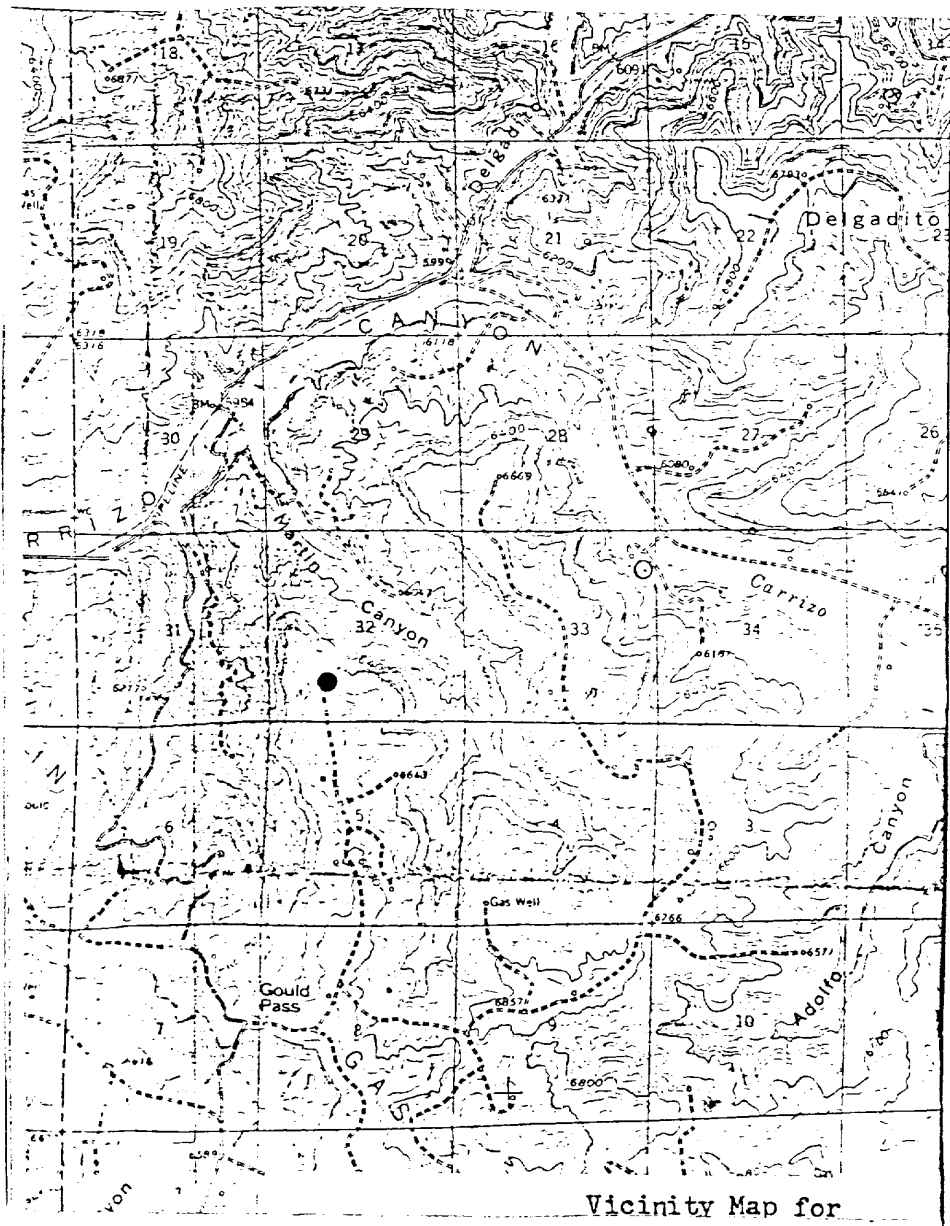
I hereby certify that the information contained herein is true and complete to the best of my knowledge and belief.

[Signature]
Name
Drilling Clerk
Position
El Paso Natural Gas Co.
Company
Date *June 7, 1985*

I hereby certify that the well location shown on this plat was plotted from field notes of actual surveys made by me or under my supervision, and that the same is true and correct to the best of my knowledge and belief.

Date Surveyed *May 20, 1985*
Registered Professional Engineer and Land Surveyor
[Signature]
Fred B. Kerr Jr.
Certificate No. *4222*

San Juan 28-7 U #252E
 Basin Dakota
 SW 32-28-7



Vicinity Map for
 LEGEND OF RIGHT-OF-WAYS

Map #1

- EXISTING ROADS
- EXISTING PIPELINES
- EXISTING ROAD & PIPELINE
- PROPOSED ROADS
- PROPOSED PIPELINES
- PROPOSED ROAD & PIPELINE