

UNITED STATES
DEPARTMENT OF THE INTERIOR
BUREAU OF LAND MANAGEMENT

APPLICATION FOR PERMIT TO DRILL, DEEPEN, OR PLUG BACK

1a. TYPE OF WORK DRILL	5. LEASE NUMBER SF-080505A
1b. TYPE OF WELL GAS SINGLE ZONE	6. IF INDIAN, ALL. OR TRIBE NAME
2. OPERATOR EL PASO NATURAL GAS CO. <i>Mention Oil Inc.</i>	7. UNIT AGREEMENT NAME SAN JUAN 28-6 UNIT
3. ADDRESS & PHONE NO. OF OPERATOR P O BOX 4990 FARMINGTON, NM 87499	8. FARM OR LEASE NAME SAN JUAN 28-6 UNIT
4. LOCATION OF WELL 1525'S 2505'W	9. WELL NO. 402
14. DISTANCE IN MILES FROM NEAREST TOWN 4 MILES FROM GOVERNADOR	10. FIELD, POOL, OR WILDCAT BASIN FRUITLAND COAL
15. DISTANCE FROM PROPOSED LOCATION TO NEAREST PROPERTY OR LEASE LINE. 1525'	11. SEC. T. R. M OR BLK. <i>K</i> SEC. 11 T28N R06W NMPM
16. ACRES IN LEASE	12. COUNTY RIO ARRIBA
17. ACRES ASSIGNED TO WELL 0.00 <i>282.80</i>	13. STATE NM
18. DISTANCE FROM PROPOSED LOCATION TO NEAREST WELL DR. 1000' COMPL., OR APPLIED FOR ON THIS LEASE.	20. ROTARY OR CABLE TOOLS ROTARY
19. PROPOSED DEPTH 3356'	21. APPROX. DATE WORK WILL START
21. ELEVATIONS (DF, FT, GR, ETC.) 6475'GL	22. APPROX. DATE WORK WILL START

This action is subject to technical and procedural review pursuant to 43 CFR 3165.3 and appeal pursuant to 43 CFR 3165.4.

23. PROPOSED CASING AND CEMENTING PROGRAM

*SEE OPERATIONS PLAN

DRILLING OPERATIONS AUTHORIZED ARE SUBJECT TO COMPLIANCE WITH ATTACHED "GENERAL REQUIREMENTS".

RECEIVED
APR 17 1989
OIL CON. DIV

24. AUTHORIZED BY: *Donna B. [Signature]*
REGULATORY AFFAIRS

4-7-89
DATE

NOTE: THIS FORMAT IS ISSUED IN LIEU OF US BLM FORM 3160-3.

ok
[Signature]

NMOCC

for
Linda Rundell

OPERATIONS PLAN

DATE: MAR 15, 1989

Well Name: 402 SAN JUAN 28-6 UNIT 1525'S 2505'W
 Sec. 11 T28N R06W RIO ARRIBA NEW MEXICO
 BASIN FRUITLAND COAL Elevation 6475'GL

Formation tops: Surface- SAN JOSE
 Ojo Alamo- 2547
 Kirtland- 2718
 Fruitland- 3045
 Fruitland Coal Top- 3219
 Fruitland Coal Base- 3355
 Intermediate TD- 3200
 Total Depth- 3356
 Pictured Cliffs- 3358

Logging Program: Mud logs from intermediate to total depth.

Mud Program: Low solid non-dispersed mud from surface to total depth.

Casing Program:	Hole Size	Depth Interval	Csg. Size	Weight	Grade
	12 1/4"	0 - 200	9 5/8"	32.3#	H-40
	8 3/4"	0 - 3200	7"	20.0#	K-55
	6 1/4"	3150 - 3356	5 1/2"	15.5#	K-55
Tubing Program:		0 - 3356	2 7/8"	6.5#	J-55

Float Equipment: 9 5/8" surface casing - saw tooth guide shoe.

7" intermediate casing - guide shoe and self-fill insert float valve. Three centralizers run every other joint above shoe. Run insert float one joint above the guide shoe.

5 1/2" production liner - float shoe on bottom and a pre-drilled liner run to the 7" casing with a minimum 50' overlap. Liner hanger is a double slip grip type.

Wellhead Equipment: 9 5/8" x 7" x 2 7/8" x 11" 3000 psi xmas tree assembly.

Cementing:

9 5/8" surface casing - cement with 106 sacks of class "B" cement with 1/4# flocele/sack and 3% calcium chloride (125 cu ft. of slurry, 100% excess to circulate to surface). WOC 12 hours. Test casing to 600 psi for 30 minutes.

7" intermediate casing - lead with 41 sacks of 65/35 class "B" poz with 6% gel, 2% calcium chloride and 1/2 cu.ft. Perlite/sack (10.3 gallons of water/sack) tail with 100 sacks of class "B" with 2% calcium chloride. 196 cu ft. of slurry, 100% excess to cover the Ojo Alamo. Run temperature survey at 8 hours. WOC 12 hours. Test casing to 1500 psi for 30 minutes.

5 1/2" liner - do not cement.

The Fruitland coal formation will be completed.

A 3000 psi WP and 6000 psi test double gate preventer equipped with blind and pipe rams will be used for blow out prevention on this well. This gas is dedicated.

The S/2 of Section 11 is dedicated to this well.

OIL CONSERVATION DIVISION

STATE OF NEW MEXICO
ENERGY AND MINERALS DEPARTMENT

P. O. BOX 2088
SANTA FE, NEW MEXICO 87501

Form C-102
Revised 10-

All distances must be from the outer boundaries of the Section.

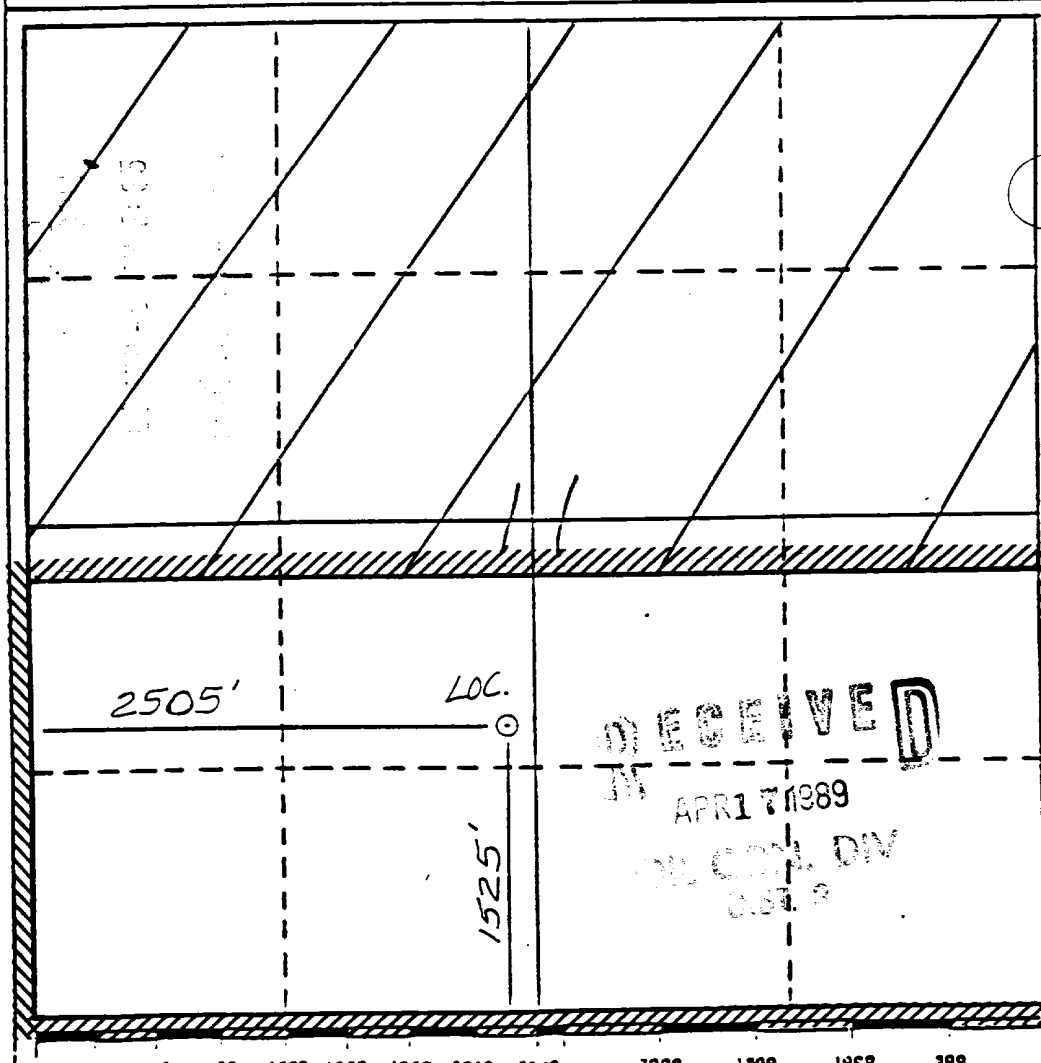
Operator <i>Meridian Oil Co.</i> El Paso Natural Gas		Lease San Juan 28-6 Unit			Well No. 402
Unit Letter K	Section 11	Township 28 North	Range 6 West	County Rio Arriba	
Actual Footage Location of Wells 1525 feet from the South line and 2505 feet from the West line					
Ground Level Elev. 6475'	Producing Formation Fruitland Coal		Pool Basin	Dedicated Acreage 382.80	

1. Outline the acreage dedicated to the subject well by colored pencil or hachure marks on the plat below.
2. If more than one lease is dedicated to the well, outline each and identify the ownership thereof (both as to working interest and royalty).
3. If more than one lease of different ownership is dedicated to the well, have the interests of all owners been consolidated by communitization, unitization, force-pooling, etc?

Yes No If answer is "yes:" type of consolidation unitization

If answer is "no," list the owners and tract descriptions which have actually been consolidated. (Use reverse side of this form if necessary.)

No allowable will be assigned to the well until all interests have been consolidated (by communitization, unitization, force-pooling, or otherwise) or until a non-standard unit, eliminating such interests, has been approved by the Division.



CERTIFICATION

I hereby certify that the information retained herein is true and complete best of my knowledge and belief.

Seamus B. Sullivan
Name
Regulatory Affairs
Position
El Paso Natural Gas
Company
Date
4-7-89

I hereby certify that the information shown on this plat was derived from notes of actual surveys made by me under supervision, and that the same is true and correct to the best of my knowledge and belief.

Neale C. Edwards
Date Surveyed
11-5-88
Registered Professional Engineer and/or Land Surveyor
Neale C. Edwards
Certificate No.
6857

RECEIVED
APR 17 1989
OIL CON. DIV.
SANTA FE, N.M.