

50-159-24502

UNITED STATES
DEPARTMENT OF THE INTERIOR
BUREAU OF LAND MANAGEMENT

RECEIVED
MAIL ROOM

NOV 20 AM 10:49

APPLICATION FOR PERMIT TO DRILL, DEEPEN, OR PLUG BACK

| | |
|--------------------------------------------------------------------------------------------------------------------------------------------------------------|----------------------------------------------------------------------------------------------------------|
| 1a. TYPE OF WORK DRILL | 5. LEASE NUMBER SF-080430B |
| 1b. TYPE OF WELL GAS SINGLE ZONE | 6. IF INDIAN, ALL. OR TRIBE NAME |
| 2. OPERATOR EL PASO NATURAL GAS CO. | 7. UNIT AGREEMENT NAME SAN JUAN 28-6 UNIT |
| 3. ADDRESS & PHONE NO. OF OPERATOR P O BOX 4990 FARMINGTON, NM 87499 | 8. FARM OR LEASE NAME SAN JUAN 28-6 UNIT |
| 4. LOCATION OF WELL 680'S 1140'W | 9. WELL NO. 406 |
| 14. DISTANCE IN MILES FROM NEAREST TOWN 10 MILES FROM GOBERNADOR | 10. FIELD, POOL, OR WILDCAT BASIN FRUITLAND COAL |
| 15. DISTANCE FROM PROPOSED LOCATION TO NEAREST PROPERTY OR LEASE LINE. 680' | 11. SEC. T. R. M OR BLK. N SEC. 19 T28N R06W NMPM |
| 16. ACRES IN LEASE 845.63 This action is subject to technical and procedural review pursuant to 43 CFR 3165.3 and appeal pursuant to 43 CFR 3165.4. | 12. COUNTY 13. STATE RIO ARRIBA NM |
| 17. ACRES ASSIGNED TO WELL 262.76 | 18. DISTANCE FROM PROPOSED LOCATION TO NEAREST WELL DR. COMPL., OR APPLIED FOR ON THIS LEASE. 400' |
| 19. PROPOSED DEPTH 3341' | 20. ROTARY OR CABLE TOOLS ROTARY |
| 21. ELEVATIONS (DF, FT, GR, ETC.) 6595'GL | 22. APPROX. DATE WORK WILL START |

DRILLING OPERATIONS AUTHORIZED ARE
SUBJECT TO COMPLIANCE WITH ATTACHED
"GENERAL REQUIREMENTS".

23. PROPOSED CASING AND CEMENTING PROGRAM

*SEE OPERATIONS PLAN

RECEIVED
JUL 19 1989

24. AUTHORIZED BY: *[Signature]*
REGULATORY AFFAIRS

OIL CON. DIV
DIST. 3

3-17-89
DATE REVIEWED
AS APPLICABLE

NOTE: THIS FORMAT IS ISSUED IN LIEU OF US BLM FORM 3160-3

[Signature]
AREA MANAGER

Hold C-104 for NSG

BLM/DOO

All distances must be from the outer boundaries of the Section.

| | | | | |
|-------------------------------------------------------------------------------------------------------------------------------|----------------------------------------------|-------------------------------------------------|------------------------|-------------------------------|
| Operator <u>El Paso Natural Gas</u> | | Lease <u>San Juan 28-6 Unit (SF-080430H)</u> | | Well No. <u>406</u> |
| Unit Letter <u>N</u> | Section <u>19</u> | Township <u>28 North</u> | Range <u>6 West</u> | County <u>Rio Arriba</u> |
| Actual Footage Location of Wells <u>630</u> feet from the <u>South</u> line and <u>1140</u> feet from the <u>West</u> line | | | | |
| Ground Level Elev. <u>6595'</u> | Producing Formation <u>Fruitland Coal</u> | | Pool <u>Basin</u> | Dedicated Acreage: <u></u> |

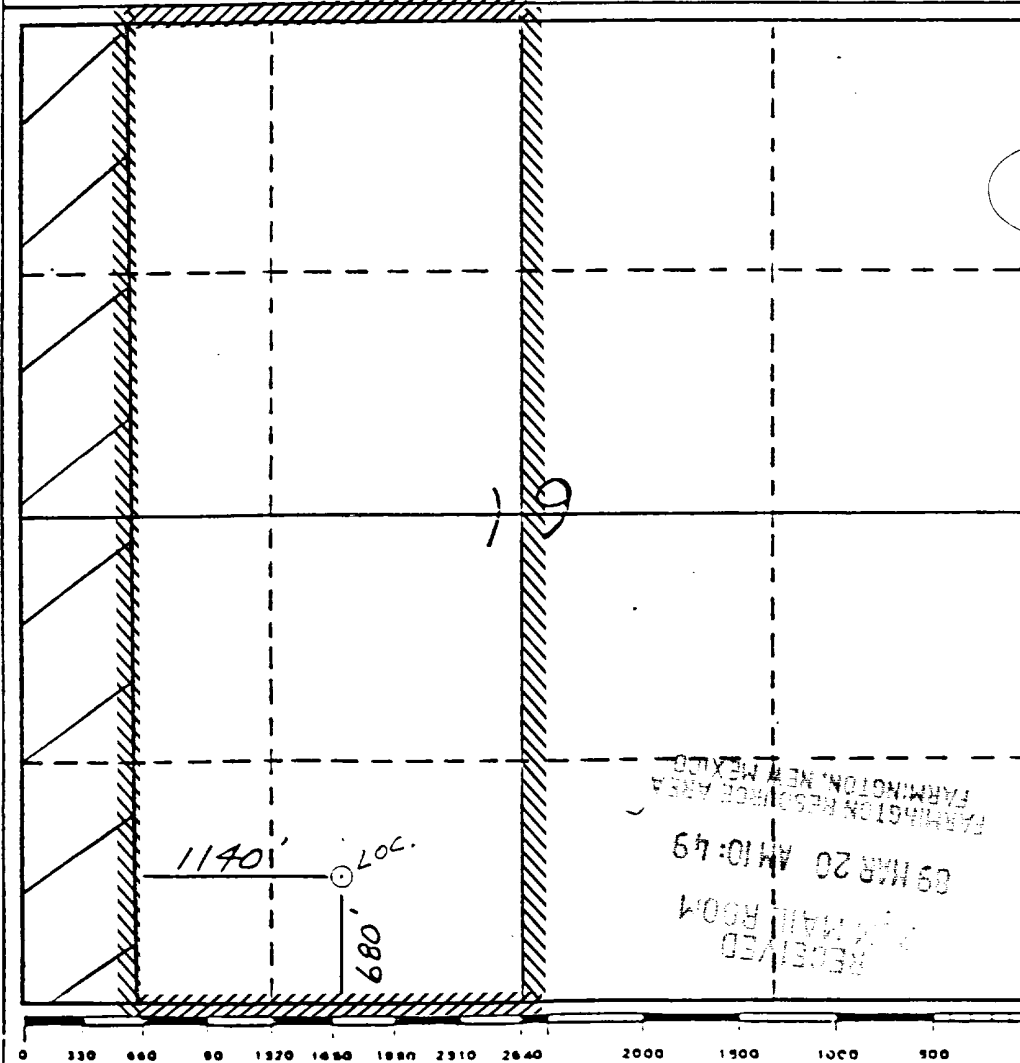
1. Outline the acreage dedicated to the subject well by colored pencil or hachure marks on the plat below.
2. If more than one lease is dedicated to the well, outline each and identify the ownership thereof (both as to work interest and royalty).
3. If more than one lease of different ownership is dedicated to the well, have the interests of all owners been consolidated by communitization, unitization, force-pooling, etc?

☒ Yes ☐ No If answer is "yes," type of consolidation unitization

If answer is "no," list the owners and tract descriptions which have actually been consolidated. (Use reverse side of this form if necessary.)

No allowable will be assigned to the well until all interests have been consolidated (by communitization, unitization, forced-pooling, or otherwise) or until a non-standard unit, eliminating such interests, has been approved by the Division.

* Non-standard due to archaeology and terrain.



CERTIFICATION

I hereby certify that the information contained herein is true and complete to the best of my knowledge and belief.

[Signature]

Name
Regulatory Affairs

Position
El Paso Natural Gas

Company
3-17-89

Date

I hereby certify that the location shown on this plat was plotted from notes of actual survey made by me under my supervision, and that the same is true and correct to the best of my knowledge and belief.

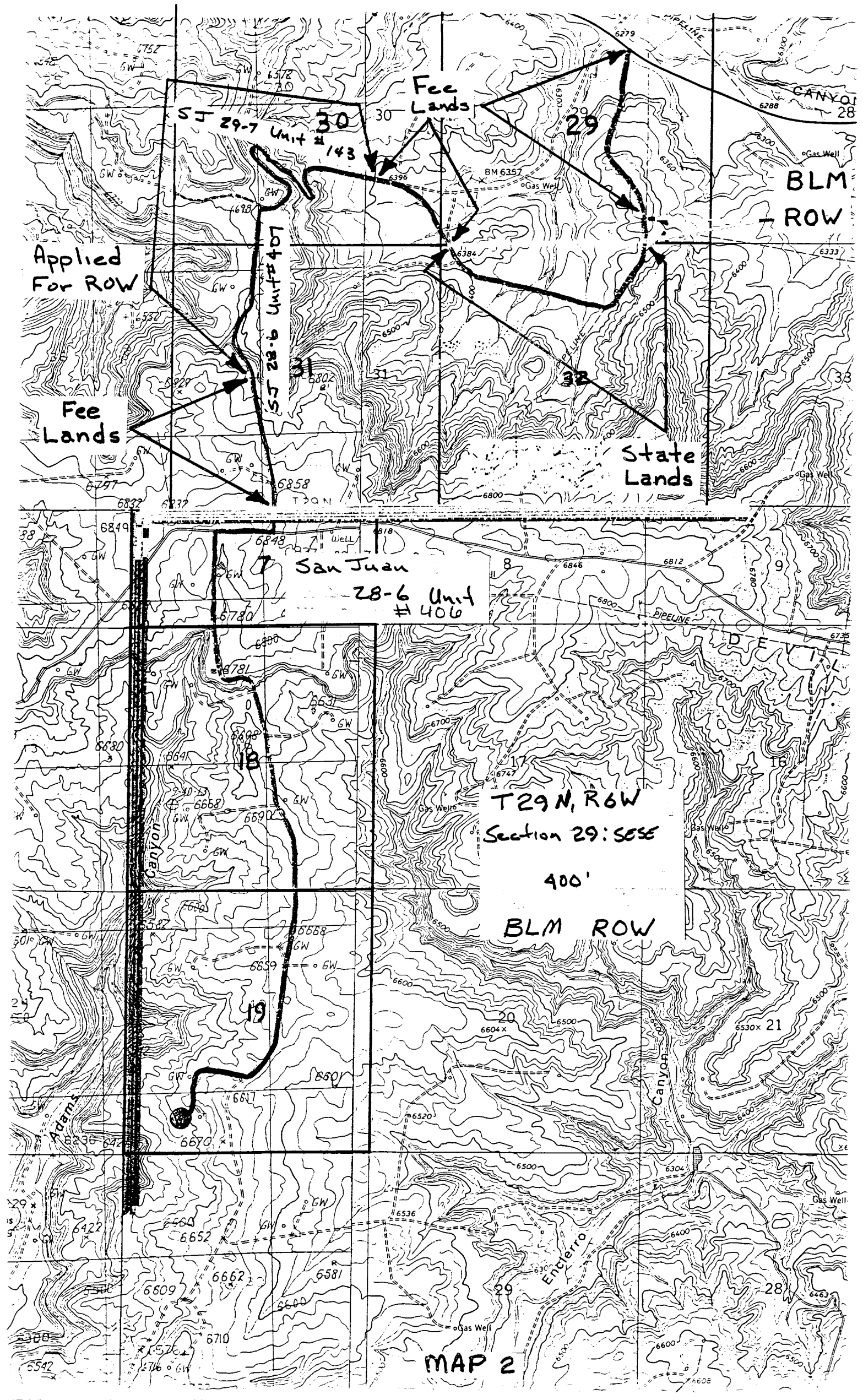
[Signature]

Date Surveyed
11-10-88

Registered Professional Engineer and/or Land Surveyor

Neale C. Edward

Certificate No.
6857



Applied
For ROW

Fee
Lands

Fee
Lands

BLM
ROW

State
Lands

San Juan

28-6 Unit
#406

T29N, R6W
Section 29: SESE

400'

BLM ROW

MAP 2