

UNITED STATES
DEPARTMENT OF THE INTERIOR
BUREAU OF LAND MANAGEMENT

RECEIVED

MAR 16 1990

OIL CON. DIV.

APPLICATION FOR PERMIT TO DRILL, DEEPEN, OR PLUG ~~FORM 3~~

1a. TYPE OF WORK
DRILL

1b. TYPE OF WELL
GAS SINGLE ZONE

2. OPERATOR
~~EL PASO NATURAL GAS CO.~~
M. J. Williams Oil Inc.

3. ADDRESS & PHONE NO. OF OPERATOR
P O BOX 4990
FARMINGTON, NM 87499

4. LOCATION OF WELL
790'S 990'W

5. LEASE NUMBER
SF-080430B *30-239-24661*

6. IF INDIAN, ALL. OR TRIBE NAME

7. UNIT AGREEMENT NAME
SAN JUAN 28-6 UNIT

8. FARM OR LEASE NAME
SAN JUAN 28-6 UNIT

9. WELL NO.
405

10. FIELD, POOL, OR WILDCAT
BASIN FRUITLAND COAL

11. SEC. T. R. M OR BLK.
N SEC. 18 T28N R06W NMPM

12. COUNTY
RIO ARRIBA

13. STATE
NM

14. DISTANCE IN MILES FROM NEAREST TOWN
9 MILES FROM GOBERNADOR

15. DISTANCE FROM
PROPOSED LOCATION 790'
TO NEAREST PROPERTY
OR LEASE LINE.

16. ACRES IN LEASE
845.63

17. ACRES ASSIGNED TO WELL
0.00

18. DISTANCE FROM
PROPOSED LOCATION
TO NEAREST WELL DR. 400'
COMPL., OR APPLIED
FOR ON THIS LEASE.

19. PROPOSED DEPTH
3381'

20. ROTARY OR CABLE TOOLS
ROTARY

21. ELEVATIONS (DF, FT, GR, ETC.)
6610'GL

22. APPROX. DATE WORK WILL START

23. PROPOSED CASING AND CEMENTING PROGRAM

*SEE OPERATIONS PLAN

24. AUTHORIZED BY: *[Signature]*
REGULATORY AFFAIRS

APPROVED
AS AMENDED

MAR 12 1990

AREA MANAGER

DATE

NOTE: THIS FORMAT IS ISSUED IN LIEU OF US BLM FORM 3160-3.

NMOCC

OIL CONSERVATION DIVISION

STATE OF NEW MEXICO
ENERGY AND MINERALS DEPARTMENTP. O. BOX 2088
SANTA FE, NEW MEXICO 37501Form C-102
Revised 10-1-

All distances must be from the outer boundaries of the Section.

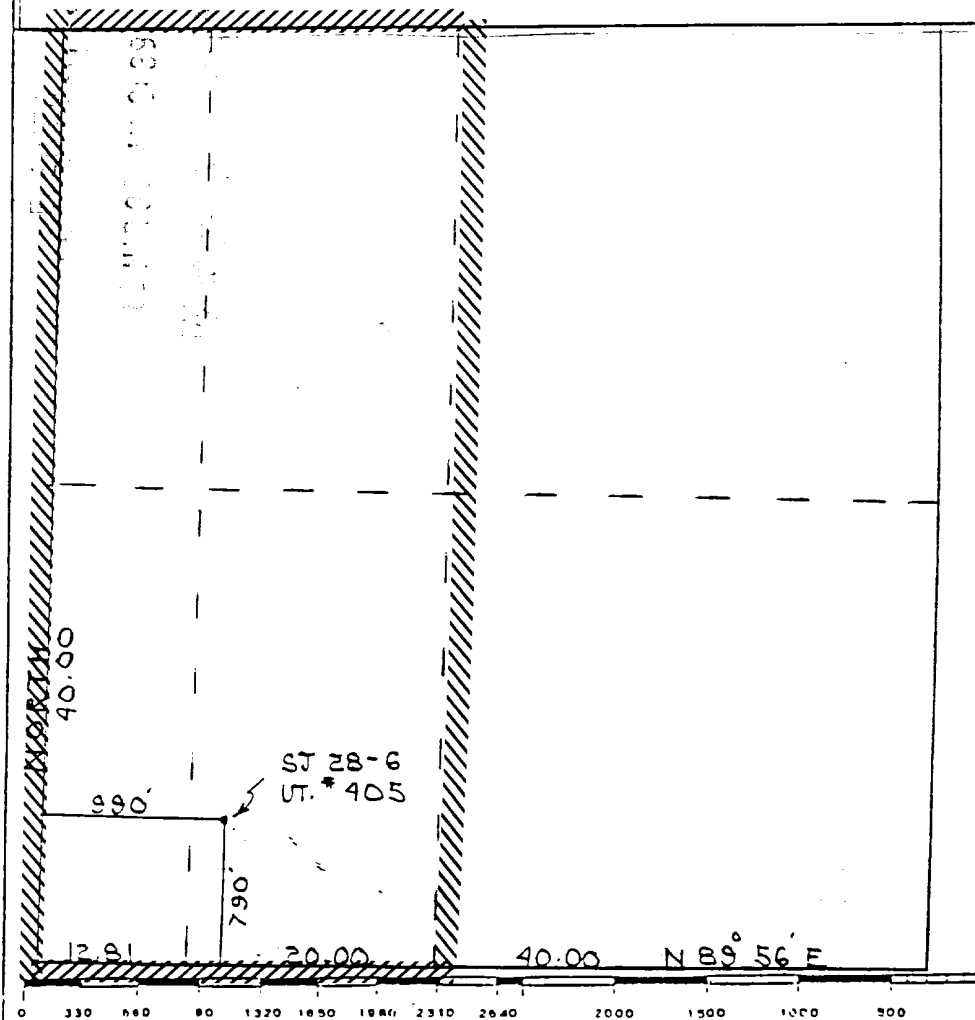
Operator <u>Meridian Oil Trust</u> <u>El Paso Natural Gas Company</u>			Lease <u>San Juan 28-6 Unit (SF-080430B)</u>		Well No. <u>405</u>
Unit Letter <u>N</u>	Section <u>18</u>	Township <u>T28N</u>	Range <u>R6W</u>	County <u>Rio Arriba County</u>	
Actual Footage Location of Well:					
<u>790</u> feet from the <u>South</u> line and		<u>990</u> feet from the <u>West</u> line			
Ground Level Elev. <u>6610</u>	Producing Formation <u>Fruitland Coal</u>	Pool <u>Basin</u>	Dedicated Acreage <u>262.84</u> Acres		

1. Outline the acreage dedicated to the subject well by colored pencil or hachure marks on the plat below.
2. If more than one lease is dedicated to the well, outline each and identify the ownership thereof (both as to working interest and royalty).
3. If more than one lease of different ownership is dedicated to the well, have the interests of all owners been consolidated by communitization, unitization, force-pooling, etc?

☒ Yes ☐ No If answer is "yes," type of consolidation unitization

If answer is "no," list the owners and tract descriptions which have actually been consolidated. (Use reverse side of this form if necessary.)

No allowable will be assigned to the well until all interests have been consolidated (by communitization, unitization, forced-pooling, or otherwise) or until a non-standard unit, eliminating such interests, has been approved by the Division.



CERTIFICATION

I hereby certify that the information contained herein is true and complete to the best of my knowledge and belief.

Name Regulatory Affairs

Position El Paso Natural Gas

Company 3-29-89

Date

I hereby certify that the well location shown on this plat was plotted from field notes of actual surveys made by me or under my supervision, and that the same is true and correct to the best of my knowledge and belief.

Date Surveyed November 7, 1988

Registered Land Surveyor R. Howard Daggett

Certification Registered Professional Land Surveyor

Well Name: 405 SAN JUAN 28-6 UNIT
Sec. 18 T28N R06W
BASIN FRUITLAND COAL

790'S 990'W
RIO ARRIBA NEW MEXICO
Elevation 6610'GL

Formation tops: Surface- SAN JOSE
Ojo Alamo- 2464
Kirtland- 2675
Fruitland- 3115
Fruitland Coal Top- 3259
Fruitland Coal Base- 3380
Total Depth- 3381
Pictured Cliffs- 3385

Logging Program: Mud logs from 3115 to total depth.

Mud Program:	Interval	Type	Weight	Visc.	Fl. Loss
	0 - 200	Spud	8.4 - 8.9	40-50	no control
	200 - 3381	Non-dispersed	8.4 - 9.5	30-60	no control

Casing Program:	Hole Size	Depth Interval	Csg. Size	Weight	Grade
	12 1/4"	0 - 200	8 5/8"	24.0#	K-40
	7 7/8"	0 - 3381	5 1/2"	15.5#	K-55
Tubing Program:		0 - 3381	2 3/8"	4.7#	J-55

Float Equipment: 8 5/8" surface casing - saw tooth guide shoe.

5 1/2" production casing - float shoe on bottom.

Three centralizers run every other joint above shoe.

Wellhead Equipment: 8 5/8" x 5 1/2" x 2 3/8" x 11" 3000 psi xmas tree assembl

Cementing:

8 5/8" surface casing - cement with 140 sacks of class "B" cement with 1/4# flocele/sack and 3% calcium chloride (165 cu ft. of slurry, 100% excess to circulate to surface). WOC 12 hours. Test casing to 600 psi for 30 minutes.

5 1/2" production casing - lead with 104 sacks of 65/35 class "B" poz with 6% gel, 2% calcium chloride and 1/2 cu.ft. Perlite/sack (10.3 gallons of water/sack) tail with 100 sacks of class "B" with 2% calcium chloride. 318 cu ft. of slurry, 100% excess to cover the Ojo Alamo. Run temperature survey at 8 hours. WOC 12 hours. Test casing to 1500 psi for 30 minutes.

