

UNITED STATES
DEPARTMENT OF THE INTERIOR
BUREAU OF LAND MANAGEMENT

30-039-24890

RECEIVED
BUREAU OF LAND MANAGEMENT
WASHINGTON, D.C. 20250

AUG 19 1990

APPLICATION FOR PERMIT TO DRILL, DEEPEN, OR PLUG BACK

1a. TYPE OF WORK DRILL	5. LEASE NUMBER SF-079193
1b. TYPE OF WELL GAS	6. IF INDIAN, ALL. OR TRIBE NAME
2. OPERATOR EL PASO NATURAL GAS CO <i>El Paso Natural Gas Co.</i>	7. UNIT AGREEMENT NAME SAN JUAN 28-6 UNIT
3. ADDRESS & PHONE NO. OF OPERATOR P O BOX 4289 FARMINGTON, NM 87499	8. FARM OR LEASE NAME SAN JUAN 28-6 UNIT
4. LOCATION OF WELL 1880' FSL 1480' FWL	9. WELL NO. 458
14. DISTANCE IN MILES FROM NEAREST TOWN 10 MILES FROM GOVERNADOR	10. FIELD, POOL, OR WILDCAT BASIN FRUITLAND COAL
15. DISTANCE FROM PROPOSED LOCATION 1480' TO NEAREST PROPERTY OR LEASE LINE.	11. SEC. T. R. M OR BLK. K SEC. 20 T28N R06W NMPM
16. ACRES IN LEASE 2240	12. COUNTY RIO ARRIBA
17. ACRES ASSIGNED TO WELL w/ 320.00	13. STATE NM
18. DISTANCE FROM PROPOSED LOCATION TO NEAREST WELL DR. 300' COMPL., OR APPLIED FOR ON THIS LEASE.	20. ROTARY OR CABLE TOOLS ROTARY
21. ELEVATIONS (DF, FT, GR, ETC.) 6591' GL	22. APPROX. DATE WORK WILL START

DRILLING OPERATIONS AUTHORIZED ARE
SUBJECT TO COMPLIANCE WITH ATTACHED
"GENERAL REQUIREMENTS".

THIS APPLICATION IS FOR A PERMIT TO DRILL
OR DEEPEN A WELL TO A MAXIMUM DEPTH OF 40,000 FEET
AND APPROXIMATE DATE OF 1990 08 19.

23. PROPOSED CASING AND CEMENTING PROGRAM

*SEE OPERATIONS PLAN

24. AUTHORIZED BY: *J. McCall*
REG. DRILLING ENGR.

RECEIVED

AUG 21 1990

8/8/90
DATE

OIL CON. DIV
DIST. 3

PERMIT NO. _____ APPROVAL DATE _____

APPROVED BY _____ TITLE _____ DATE _____

NOTE: THIS FORMAT IS ISSUED IN LIEU OF US BLM FORM 3160-3.

WACOD

Submit to Appropriate
District Office
State Lease - 4 copies
Fee Lease - 3 copies

State of New Mexico
Energy, Minerals and Natural Resources Department

Form C-102
Revised 1-1-89

OIL CONSERVATION DIVISION

P.O. Box 2088

Santa Fe, New Mexico 87504-2088

DISTRICT I

P.O. Box 1980, Hobbs, NM 88240

DISTRICT II

P.O. Drawer DD, Artesia, NM 88210

DISTRICT III

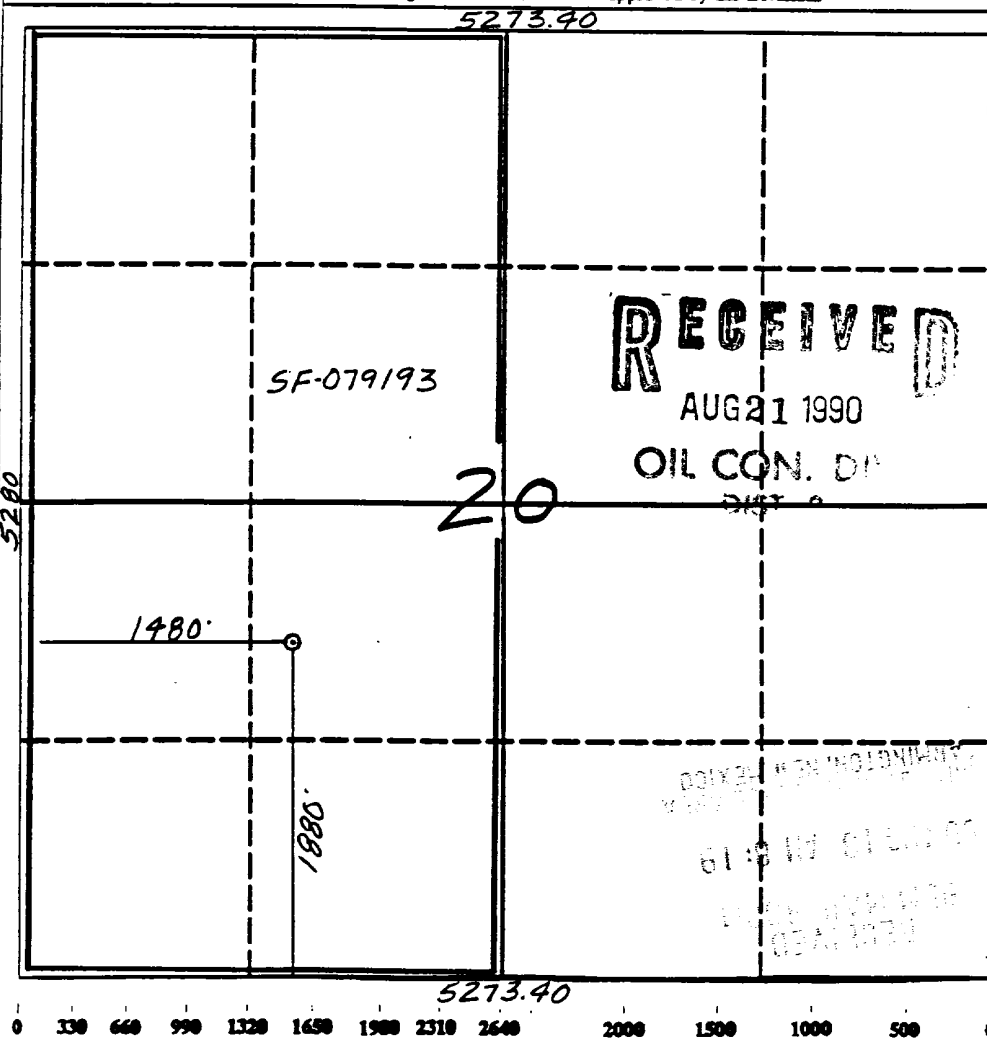
1000 Rio Brazos Rd., Aztec, NM 87410

WELL LOCATION AND ACREAGE DEDICATION PLAT

All Distances must be from the outer boundaries of the section

Operator <i>El Paso Natural Gas</i>		Lease (SF-079193) San Juan 28-6 Unit		Well No. 458
Unit Letter K	Section 20	Township 28 North	Range 6 West	County NMPM Rio Arriba
Actual Footage Location of Well: 1880 feet from the South line and 1480 feet from the West line				
Ground level Elev. 6591'	Producing Formation Fruitland Coal	Pool Basin	Dedicated Acreage: 320 Acres	

- Outline the acreage dedicated to the subject well by colored pencil or ink on the plat below.
- If more than one lease is dedicated to the well, outline each and identify the ownership thereof (both as to working interest and royalty).
- If more than one lease of different ownership is dedicated to the well, have the interest of all owners been consolidated by communitization, unitization, force-pooling, etc.?
☒ Yes ☐ No If answer is "yes" type of consolidation unitization
If answer is "no" list the owners and tract descriptions which have actually been consolidated. (Use reverse side of this form if necessary).
No allowable will be assigned to the well until all interests have been consolidated (by communitization, unitization, forced-pooling, or otherwise) or until a non-standard unit, eliminating such interest, has been approved by the Division.



OPERATOR CERTIFICATION

I hereby certify that the information contained herein is true and complete to the best of my knowledge and belief.

Peggy Bradford
Signature

Peggy Bradford

Printed Name

Regulatory Affairs

Position

El Paso Natural Gas

Company

8-7-90

Date

SURVEYOR CERTIFICATION

I hereby certify that the well location shown on this plat was plotted from field notes of actual surveys made by me or under my supervision, and that the same is true and correct to the best of my knowledge and belief.

6-22-90

Date Surveyed

Neale C. Edwards
Signature

Professional Surveyor



Certified and Registered Land Surveyor
Neale C. Edwards

Well Name: 458 SAN JUAN 28-6 UNIT
 Sec. 20 T28N R06W
 BASIN FRUITLAND COAL

1880' FSL 1480' FWL
 RIO ARRIBA NEW MEXICO
 Elevation 6591' GL

Formation tops: Surface- SAN JOSE

Ojo Alamo- 2606

Kirtland- 2683

Fruitland- 3078

Fruitland Coal Top- 3172

Fruitland Coal Base- 3380

Pictured Cliffs- 3380

Total Depth- 3385

Logging Program: Mud logs from 3078 to total depth.

Mud Program:	Interval	Type	Weight	Visc.	Fl. Loss
	0 - 200	Spud	8.4 - 8.9	40-50	no control
	200 - 3385	Non-dispersed	8.4 - 9.5	30-60	no control

Casing Program:	Hole Size	Depth Interval	Csg. Size	Weight	Grade
	12 1/4"	0 - 200	8 5/8"	24.0#	K-40
	7 7/8"	0 - 3385	5 1/2"	15.5#	K-55
Tubing Program:		0 - 3385	2 3/8"	4.7#	J-55

Float Equipment: 8 5/8" surface casing - saw tooth guide shoe. Centralizers will be run in accordance with Onshore Order #2.

5 1/2" production casing - float shoe on bottom. Three centralizers run every other joint above shoe. Two turbolizing type centralizers - one below and one into the base of the Ojo Alamo @ 2683'. Standard centralizers thereafter every fourth joint up to the base of the surface pipe.

Wellhead Equipment: 8 5/8" x 5 1/2" x 2 3/8" x 11" 3000 psi xmas tree assembly

Cementing:

8 5/8" surface casing - cement with 211 sacks of class "B" cement with 1/4# flocele/sack and 3% calcium chloride (248 cu ft. of slurry, 200% excess to circulate to surface). WOC 12 hours. Test casing to 600 psi for 30 minutes.

5 1/2" production casing - lead with 550 sacks of 65/35 class "B" poz with 6% gel, 2% calcium chloride and 1/2 cu.ft. Perlite/sack (10.3 gallons of water/sack) tail with 100 sacks of class "B" with 2% calcium chloride. 1179 cu ft. of slurry, 100% excess to circulate to surface. If hole conditions permit, a 600 ft spacer will be run ahead of the cement slurry to avoid mud contamination of the cement. WOC 12 hours. If cement does not circulate to surface, a temperature log will be run after 8 hours to determine TOC.