

UNITED STATES
DEPARTMENT OF THE INTERIOR
BUREAU OF LAND MANAGEMENT

30-039-24924
APPLICATION FOR PERMIT TO DRILL, DEEPEN, OR PLUG BACK

1a. TYPE OF WORK DRILL	5. LEASE NUMBER SF-079049-B	
1b. TYPE OF WELL GAS	6. IF INDIAN, ALL. OR TRIBE NAME	
2. OPERATOR EL PASO NATURAL GAS CO. <i>M. S. ...</i>	7. UNIT AGREEMENT NAME SAN JUAN 28-6 UNIT	
3. ADDRESS & PHONE NO. OF OPERATOR P O BOX 4289 FARMINGTON, NM 87499	8. FARM OR LEASE NAME SAN JUAN 28-6 UNIT	
4. LOCATION OF WELL 1025' FNL 1650' FEL	9. WELL NO. 421	
10. FIELD, POOL, OR WILDCAT BASIN FRUITLAND COAL	11. SEC. T. R. M OR BLK. SEC. 33 T28N R06W NMPM	
14. DISTANCE IN MILES FROM NEAREST TOWN 7 MILES SW OF GOBERNADOR	12. COUNTY RIO ARRIBA	13. STATE NM
15. DISTANCE FROM PROPOSED LOCATION TO NEAREST PROPERTY OR LEASE LINE. 1025'	16. ACRES IN LEASE 1280	17. ACRES ASSIGNED TO WELL E/ 325.12
18. DISTANCE FROM PROPOSED LOCATION TO NEAREST WELL DR. COMPL., OR APPLIED FOR ON THIS LEASE. 600'	19. PROPOSED DEPTH 3344'	20. ROTARY OR CABLE TOOLS ROTARY
21. ELEVATIONS (DF, FT, GR, ETC.) 6579' GL	22. APPROX. DATE WORK WILL START	

23. PROPOSED CASING AND CEMENTING PROGRAM

*SEE OPERATIONS PLAN

RECEIVED

24. AUTHORIZED BY: *J. Caldwell* SEP 24 1990 9/6/90
REG. DRILLING ENGR. OIL CON. DIV. DATE

DIST. 3

PERMIT NO. _____ APPROVAL DATE _____
APPROVED BY _____ TITLE _____ DATE _____

NOTE: THIS FORMAT IS ISSUED IN LIEU OF US BLM FORM 3160-3. *J. Caldwell*

Submit to Appropriate
District Office
State Leases - 4 copies
Fee Leases - 3 copies

State of New Mexico
Energy, Minerals and Natural Resources Department

Form C-102
Revised 1-1-89

OIL CONSERVATION DIVISION
P.O. Box 2088
Santa Fe, New Mexico 87504-2088

DISTRICT I
P.O. Box 1980, Hobbs, NM 88240

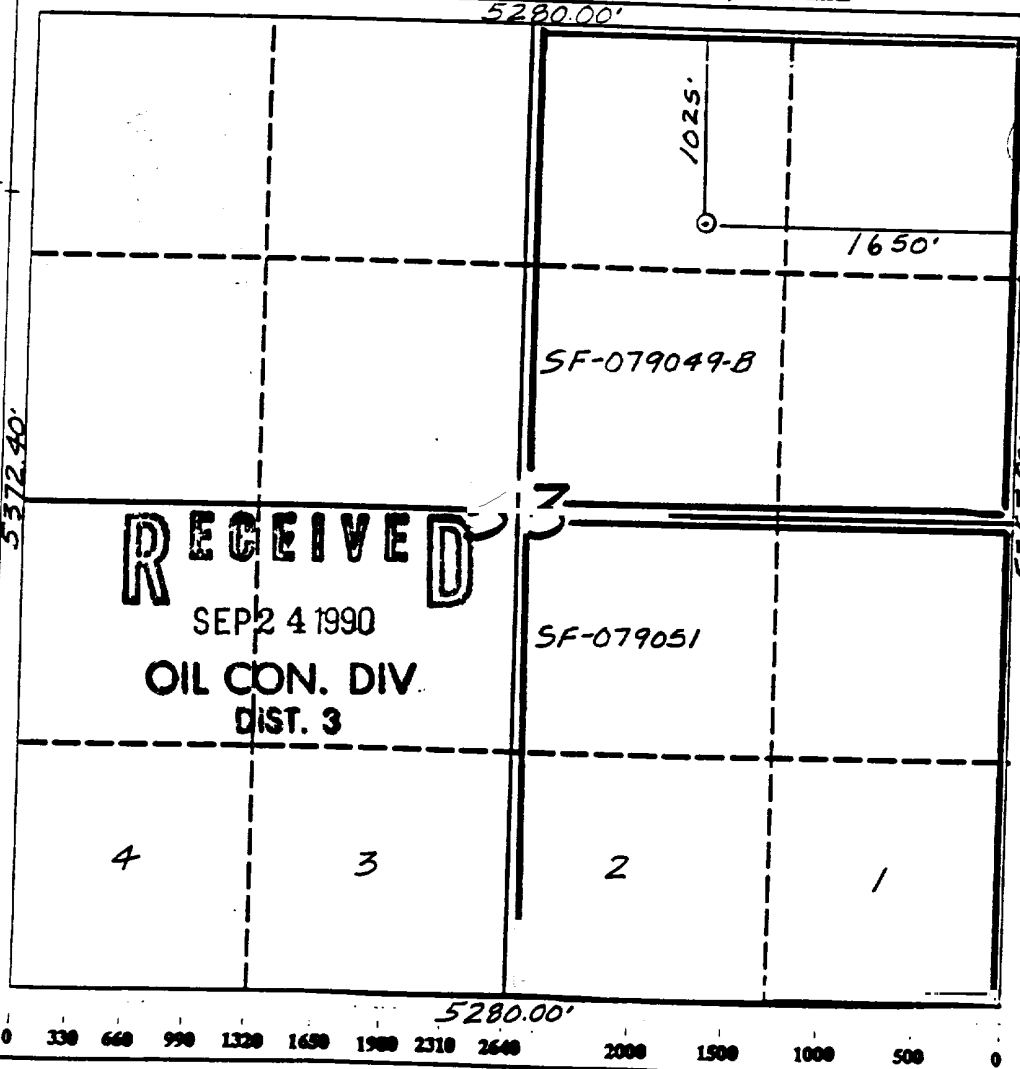
DISTRICT II
P.O. Drawer DD, Artesia, NM 88210

DISTRICT III
1000 Rio Brazos Rd., Aztec, NM 87410

WELL LOCATION AND ACREAGE DEDICATION PLAT
All Distances must be from the outer boundaries of the section

Operator <i>El Paso Natural Gas</i>		Lease (SF-079049B)	Well No. 421
Unit Letter B	Section 33	Township 28 North	Range 6 West
Actual Footage Location of Well: 1025 feet from the North line and 1650 feet from the East line		County NMPM Rio Arriba	
Ground level Elev. 6579'	Producing Formation Fruitland Coal	Pool Basin	Dedicated Acreage: 325.12 Acres

1. Outline the acreage dedicated to the subject well by colored pencil or hectare marks on the plat below.
 2. If more than one lease is dedicated to the well, outline each and identify the ownership thereof (both as to working interest and royalty).
 3. If more than one lease of different ownership is dedicated to the well, have the interest of all owners been consolidated by communitization, unitization, force-pooling, etc.?
 - Yes No
 - If answer is "yes" type of consolidation unitization
- If answer is "no" list the owners and tract descriptions which have actually been consolidated. (Use reverse side of this form if necessary.)
- No allowable will be assigned to the well until all interests have been consolidated (by communitization, unitization, force-pooling, or otherwise) or until a non-standard unit, eliminating such interest, has been approved by the Division.

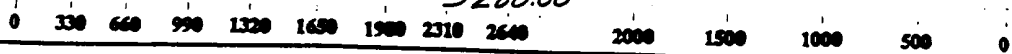


OPERATOR CERTIFICATION
I hereby certify that the information contained herein is true and complete to the best of my knowledge and belief.

Peggy Bradford
Signature
Peggy Bradford
Printed Name
Regulatory Affairs
Position
El Paso Natural Gas
Company
9-5-90
Date

SURVEYOR CERTIFICATION
I hereby certify that the well location shown on this plat was plotted from field notes or actual surveys made by me or under my supervision, and that the same is true and correct to the best of my knowledge and belief.

7-13-90
Date Surveyed
Neale C. Edwards
Signature
Professional Surveyor
NEW MEXICO
6857
REGISTERED LAND SURVEYOR
Neale C. Edwards



Well Name: 421 SAN JUAN 28-6 UNIT
 Sec. 33 T28N R06W
 BASIN FRUITLAND COAL

1025'FNL 1650'FEL
 RIO ARRIBA NEW MEXICO
 Elevation 6579'GL

Formation tops: Surface- SAN JOSE
 Ojo Alamo- 2557
 Kirtland- 2711
 Fruitland- 3097
 Fruitland Coal Top- 3239
 Fruitland Coal Base- 3342
 Pictured Cliffs- 3346

Total Depth- 3344

Logging Program: Mud logs from 3097 to total depth.

Mud Program:	Interval	Type	Weight	Visc.	Fl. Loss
	0 - 200	Spud	8.4 - 8.9	40-50	no control
	200 - 3344	Non-dispersed	8.4 - 9.5	30-60	no control

Casing Program:	Hole Size	Depth Interval	Csg. Size	Weight	Grade
	12 1/4"	0 - 200	8 5/8"	24.0#	K-40
	7 7/8"	0 - 3344	5 1/2"	15.5#	K-55
Tubing Program:		0 - 3344	2 3/8"	4.7#	J-55

Float Equipment: 8 5/8" surface casing - saw tooth guide shoe. Centralizers will be run in accordance with Onshore Order #2.

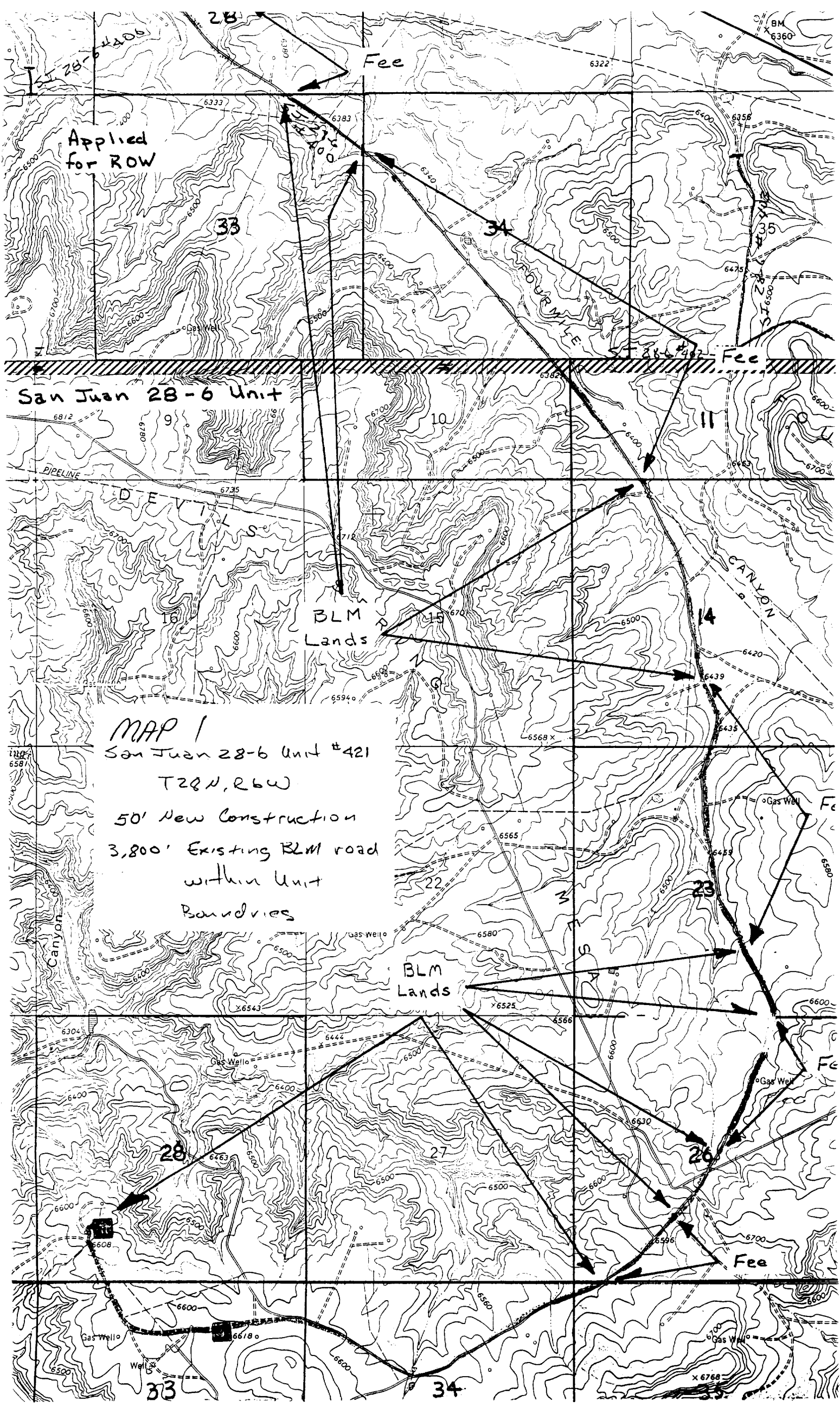
5 1/2" production casing - float shoe on bottom. Three centralizers run every other joint above shoe. Two turbolizing type centralizers - one below and one into the base of the Ojo Alamo @ 2711'. Standard centralizers thereafter every fourth joint up to the base of the surface pipe.

Wellhead Equipment: 8 5/8" x 5 1/2" x 2 3/8" x 11" 3000 psi xmas tree assembl

Cementing:

8 5/8" surface casing - cement with 211 sacks of class "B" cement with 1/4# flocele/sack and 3% calcium chloride (248 cu ft. of slurry, 200% excess to circulate to surface). WOC 12 hours. Test casing to 600 psi for 30 minutes.

5 1/2" production casing - lead with 543 sacks of 65/35 class "B" poz with 6% gel, 2% calcium chloride and 1/2 cu.ft. Perlite/sack (10.3 gallons of water/sack) tail with 100 sacks of class "B" with 2% calcium chloride. 1166 cu ft. of slurry, 100% excess to circulate to surface. If hole conditions permit, a 600 ft spacer will be run ahead of the cement slurry to avoid mud contamination of the cement. WOC 12 hours. If cement does not circulate to surface, a temperature log will be run after 8 hours to determine TOC.



Applied for ROW

San Juan 28-6 Unit

MAP 1
San Juan 28-6 Unit #421
T28N, R6W
50' New Construction
3,800' Existing BLM road
within Unit
Boundaries

BLM Lands

BLM Lands

Fee