

30-039-25037

UNITED STATES
DEPARTMENT OF THE INTERIOR
BUREAU OF LAND MANAGEMENT

APPLICATION FOR PERMIT TO DRILL, DEEPEN, OR PLUG BACK

1a. TYPE OF WORK DRILL	5. LEASE NUMBER SF-079193
1b. TYPE OF WELL GAS	6. IF INDIAN, ALL. OR TRIBE NAME
2. OPERATOR EL PASO NATURAL GAS CO. <i>Martinez</i>	7. UNIT AGREEMENT NAME SAN JUAN 28-6 UNIT
3. ADDRESS & PHONE NO. OF OPERATOR P O BOX 4289 FARMINGTON, NM 87499	8. FARM OR LEASE NAME SAN JUAN 28-6 UNIT
4. LOCATION OF WELL 1385' FSL 1540' FWL	9. WELL NO. 462
14. DISTANCE IN MILES FROM NEAREST TOWN 6 MILES S/W OF GOBERNADOR	10. FIELD, POOL, OR WILDCAT BASIN FRUITLAND COAL
15. DISTANCE FROM PROPOSED LOCATION TO NEAREST PROPERTY OR LEASE LINE. 1385'	11. SEC. T. R. M OR BLK. <i>K</i> SEC. 22 T28N R06W NMPM
16. ACRES IN LEASE <i>2240</i>	12. COUNTY RIO ARRIBA
17. ACRES ASSIGNED TO WELL <i>320.00</i>	13. STATE NM
18. DISTANCE FROM PROPOSED LOCATION TO NEAREST WELL DR. COMPL., OR APPLIED FOR ON THIS LEASE. 300'	14. COUNTY RIO ARRIBA
19. PROPOSED DEPTH 3364'	15. STATE NM
20. ROTARY OR CABLE TOOLS ROTARY	
21. ELEVATIONS (DF, FT, GR, ETC.) 6546' GL	DRILLING OPERATIONS AUTHORIZED ARE SUBJECT TO COMPLIANCE WITH ATTACHED "GENERAL REQUIREMENTS".
22. APPROX. DATE WORK WILL START	

23. PROPOSED CASING AND CEMENTING PROGRAM

*SEE OPERATIONS PLAN

RECEIVED

24. AUTHORIZED BY: *Joe Caldwell*
REG. DRILLING ENGR.

DEC 14 1990
OIL CON. DIV.
DIST. 3
DATE *10/9/90*

PERMIT NO. _____ APPROVAL DATE _____
APPROVED BY _____ TITLE _____ DATE _____

NOTE: THIS FORMAT IS ISSUED IN LIEU OF US BLM FORM 3160-3.

OK (E)

AMOOD

10/27/1990
John S. Keller
PERMITS SECTION

Submit to Appropriate District Office
 State Leases - 4 copies
 Fee Leases - 3 copies

State of New Mexico
 Energy, Minerals and Natural Resources Department

Form C-102
 Revised 1-1-89

OIL CONSERVATION DIVISION
 P.O. Box 2088
 Santa Fe, New Mexico 87504-2088

DISTRICT I
 P.O. Box 1980, Hobbs, NM 88240

DISTRICT II
 P.O. Drawer DD, Artesia, NM 88210

DISTRICT III
 1000 Rio Brazos Rd., Aztec, NM 87410

WELL LOCATION AND ACREAGE DEDICATION PLAT

All Distances must be from the outer boundaries of the section

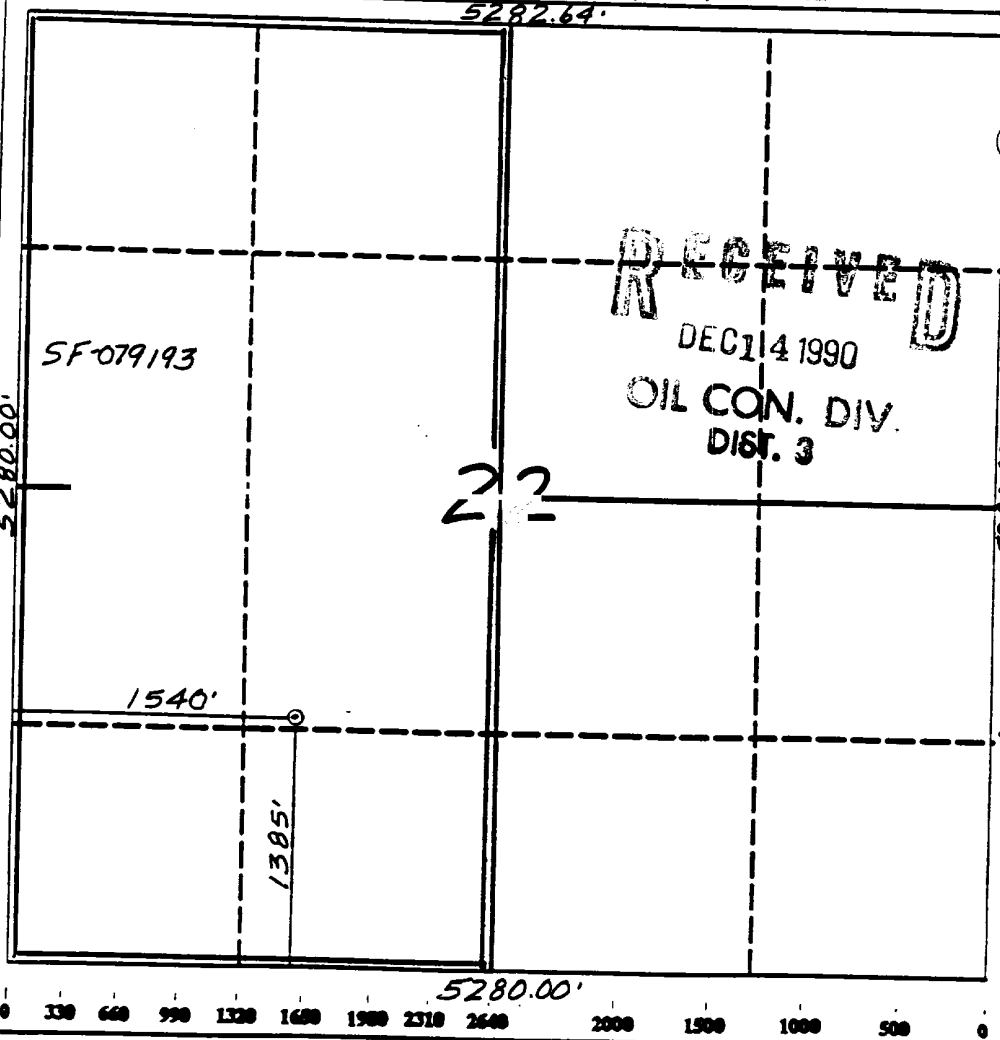
Operator <i>El Paso Natural Gas</i>		Lease San Juan (SF-079193) 28-6 Unit	Well No. 462
Unit Letter K	Section 22	Township 28 North	Range 6 West
Actual Footings Location of Well: 1385 feet from the South line and 1540 feet from the West line		County NMPM	Rio Arriba
Ground level Elev. 6546'	Producing Formation FruitlandCoal	Pool Basin	Dedicated Acreage: 320 Acres

- Outline the acreage dedicated to the subject well by colored pencil or hectare marks on the plat below.
- If more than one lease is dedicated to the well, outline each and identify the ownership thereof (both as to working interest and royalty).
- If more than one lease of different ownership is dedicated to the well, have the interest of all owners been consolidated by commutation, unitization, forced-pooling, etc.?

Yes No If answer is "yes" type of consolidation unitization

If answer is "no" list the owners and tract descriptions which have actually been consolidated. (Use reverse side of this form if necessary.)

No allowable well be assigned to the well until all interests have been consolidated (by commutation, unitization, forced-pooling, or otherwise) or until a non-standard unit, eliminating such interest, has been approved by the Division.



RECEIVED
 DEC 14 1990
 OIL CON. DIV.
 DIST. 3

OPERATOR CERTIFICATION

I hereby certify that the information contained herein is true and complete to the best of my knowledge and belief.

Peggy Bradfield
 Signature

Peggy Bradfield
 Printed Name

Regulatory Affairs
 Position

El Paso Natural Gas
 Company

10-9-90
 Date

SURVEYOR CERTIFICATION

I hereby certify that the well location shown on this plat was plotted from field notes & actual surveys made by me or under my supervision, and that the same is true and correct to the best of my knowledge and belief.

8-14-90
 Date Surveyed

Neale C. Edwards
 Signature



Neale C. Edwards
 Certified Professional Surveyor

Well Name: 462 SAN JUAN 28-6 UNIT 1385'FSL 1540'FWL
 Sec. 22 T28N R06W RIO ARRIBA NEW MEXICO
 BASIN FRUITLAND COAL Elevation 6546'GL

Formation tops: Surface- San Jose
 Ojo Alamo- 2466
 Kirtland- 2740
 Fruitland- 3077
 Fruitland Coal Top- 3162
 Fruitland Coal Base- 3361 Total Depth- 3364
 Pictured Cliffs- 3361

Logging Program: Mud logs from 3077 to total depth.

Mud Program:	Interval	Type	Weight	Visc.	Fl. Loss
	0 - 200	Spud	8.4 - 8.9	40-50	no control
	200 - 3364	Non-dispersed	8.4 - 9.5	30-60	no control

Casing Program:	Hole Size	Depth Interval	Csg. Size	Weight	Grade
	12 1/4"	0 - 200	8 5/8"	24.0#	K-40
	7 7/8"	0 - 3364	5 1/2"	15.5#	K-55
Tubing Program:		0 - 3364	2 3/8"	4.7#	J-55

Float Equipment: 8 5/8" surface casing - saw tooth guide shoe. Centralizers will be run in accordance with Onshore Order #2.

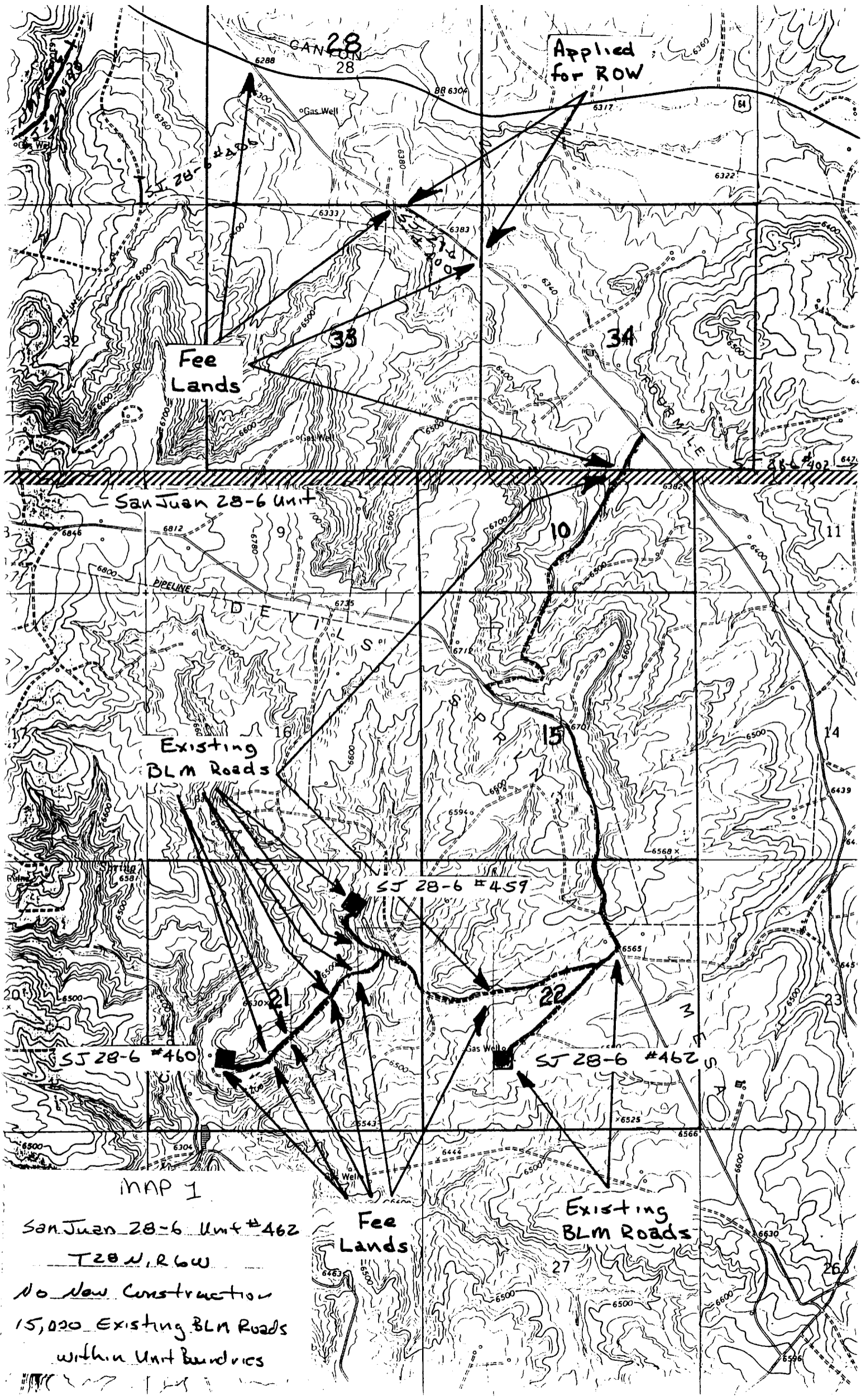
5 1/2" production casing - float shoe on bottom. Three centralizers run every other joint above shoe. Two turbolizing type centralizers - one below and one into the base of the Ojo Alamo @ 2740'. Standard centralizers thereafter every fourth joint up to the base of the surface pipe.

Wellhead Equipment: 8 5/8" x 5 1/2" x 2 3/8" x 11" 3000 psi xmas tree assembl

Cementing:

8 5/8" surface casing - cement with 211 sacks of class "B" cement with 1/4# flocele/sack and 3% calcium chloride (248 cu ft. of slurry, 200% excess to circulate to surface). WOC 12 hours. Test casing to 600 psi for 30 minutes.

5 1/2" production casing - lead with 546 sacks of 65/35 class "B" poz with 6% gel, 2% calcium chloride and 1/2 cu.ft. Perlite/sack (10.3 gallons of water/sack) tail with 100 sacks of class "B" with 2% calcium chloride. 1172 cu ft. of slurry, 100% excess to circulate to surface. If hole conditions permit, a 600 ft spacer will be run ahead of the cement slurry to avoid mud contamination of the cement. WOC 12 hours. If cement does not circulate to surface, a temperature log will be run after 8 hours to determine TOC.



MAP 1

San Juan 28-6 Unit #462

T28N, R6W

No New Construction
 15,020 Existing BLM Roads
 within Unit Boundaries

Fee
Lands

Existing
BLM Roads