

UNITED STATES  
DEPARTMENT OF THE INTERIOR  
BUREAU OF LAND MANAGEMENT

SUBMIT IN TRIPLICATE\*  
(Other instructions on reverse side)

FORM APPROVED  
OMB NO. 1004-0136  
Expires: February 28, 1995

APPLICATION FOR PERMIT TO DRILL OR DEEPEN

1a. TYPE OF WORK  
DRILL ☒ DEEPEN ☐

b. TYPE OF WELL  
OIL WELL ☐ GAS WELL ☒ OTHER ☐ SINGLE ZONE ☒ MULTIPLE ZONE ☐

2. NAME OF OPERATOR  
Conoco, Inc. 5073 (915) 686-6548

3. ADDRESS AND TELEPHONE NO.  
10 Desta Dr. Ste 100W, Midland, TX 79705

4. LOCATION OF WELL (Report location clearly and in accordance with any State requirements.)  
At surface 916' FNL & 813' FWL  
At proposed prod. zone 916' FNL & 813' FWL

5. LEASE DESIGNATION AND SERIAL NO.  
SF 079290B

6. IF INDIAN, ALLOTTEE OR TRIBE NAME

7. UNIT AGREEMENT NAME  
San Juan 28-7

8. FARM OR LEASE NAME, WELL NO.  
16608  
San Juan 28-7 Unit 322M

9. API WELL NO.  
222M 30-0399-25562

10. FIELD AND POOL, OR WILDCAT  
Blanco MV/Basin Dakota 72319 71599

11. SEC., T., R., M., OR BLE. AND SURVEY OR AREA  
D Sec. 25, T-28N, R-7W

12. COUNTY OR PARISH  
Rio Arriba

13. STATE  
NM

14. DISTANCE IN MILES AND DIRECTION FROM NEAREST TOWN OR POST OFFICE\*

15. DISTANCE FROM PROPOSED\* LOCATION TO NEAREST PROPERTY OR LEASE LINE, FT. (Also to nearest drlg. unit line, if any)

16. NO. OF ACRES IN LEASE

17. NO. OF ACRES ASSIGNED TO THIS WELL  
W/2 - 320  
W/2 - 320

18. DISTANCE FROM PROPOSED LOCATION\* TO NEAREST WELL, DRILLING, COMPLETED, OR APPLIED FOR, ON THIS LEASE, FT.

19. PROPOSED DEPTH  
8060'

20. ROTARY OR CABLE TOOLS  
Rotary

21. ELEVATIONS (Show whether DF, RT, GR, etc.)  
6586'

22. APPROX. DATE WORK WILL START\*  
3/15/96

23. PROPOSED CASING AND CEMENTING PROGRAM

SIZE OF HOLE	GRADE SIZE OF CASING	WEIGHT PER FOOT	SETTING DEPTH	QUANTITY OF CEMENT
12-1/4"	9-5/8"	36#	250'	150 sxs
8-3/4"	7"	23#	3594'	575 sxs
6-1/4"	4-1/2"	11.6#	8060'	435 sxs

It is proposed to drill a vertical wellbore to be downhole commingled in the Blanco Mesaverde and Basin Dakota Pools following the acquisition of sufficient production test data for allocation purposes. Downhole commingling has already been approved by the BLM and by the state (Order R-10476). The well will be drilled and equipped according to the following attachments:

1. Well Location & Acreage Dedication Plat (C-102).
2. Proposed Well Plan Outline.
3. Cementing and Mud Programs.
4. Blowout Preventer Hookup.
5. Surface Use Plan with EXHIBITS A.1, A.2, B.1, B.2, & C.
6. Pipeline specifications & right-of-way (EXHIBITS D.1 & D.2).

This application includes ROW's for the well pad, access road, and pipeline.

\*\*\* NOTE: An NOS was filed 11/29/94 for this well.

Archeological surveys have been completed for well pad, access road, and pipeline (LAC Report 9458s) and clearances recommended. The BLM on-site inspection has also been completed.

IN ABOVE SPACE DESCRIBE PROPOSED PROGRAM: If proposal is to deepen, give data on present productive zone and proposed new productive zone. If proposal is to drill or deepen directionally, give pertinent data on subsurface locations and measured and true vertical depths. Give blowout preventer program, if any.

24. SIGNED Jerry M. Hoover TITLE Sr. Conservation Coordinator DATE 2/1/96  
(This space for Federal or State office use)

PERMIT NO. \_\_\_\_\_ APPROVAL DATE \_\_\_\_\_  
Application approved only for persons holding legal or equitable title to those rights in the subject lease which would entitle the applicant to conduct operations thereon.  
CONDITIONS OF APPROVAL: \_\_\_\_\_

APPROVED BY [Signature] DATE FEB 27 1996  
\*See Instructions On Reverse Side

Title 18 U.S.C. Section 1001, makes it a crime for any person knowingly and willfully to make to any department or agency of the United States any false, fictitious or fraudulent statements or representations as to any matter within the jurisdiction of that department or agency.

NMOCD

APPROVED  
AS AMENDED

DISTRICT MANAGER

District I  
PO Box 1980, Hobbs, NM 88241-1980  
District II  
PO Drawer DD, Artesia, NM 88211-0719  
District III  
1000 Rio Brazos Rd., Aztec, NM 87410  
District IV  
PO Box 2088, Santa Fe, NM 87504-2088

State of New Mexico  
Energy, Minerals & Natural Resources Department

OIL CONSERVATION DIVISION  
PO Box 2088  
Santa Fe, NM 87504-2088

Form 0-102  
Revised February 21, 1994  
Instructions on back  
Submit to Appropriate District Office  
State Lease - 4 Copies  
Fee Lease - 3 Copies

☐ AMENDED REPORT

WELL LOCATION AND ACREAGE DEDICATION PLAT

<sup>1</sup> APT Number 30-039-25562	<sup>2</sup> Pool Code 72319 / 71599	<sup>3</sup> Pool Name BLANCO MESAVERDE / BASIN DAKOTA
<sup>4</sup> Property Code 016608	<sup>5</sup> Property Name SAN JUAN 28-7 UNIT	<sup>6</sup> Well Number 222M
<sup>7</sup> OGRID No. 005073	<sup>8</sup> Operator Name CONOCO INC.	<sup>9</sup> Elevation 6586

<sup>10</sup> Surface Location

UL or lot no. D	Section 25	Township 28N	Range 07W	Lot Idn	Feet from the 916	North/South line NORTH	Feet from the 813	East/West line WEST	County R.A.
--------------------	---------------	-----------------	--------------	---------	----------------------	---------------------------	----------------------	------------------------	----------------

<sup>11</sup> Bottom Hole Location If Different From Surface

UL or lot no.	Section	Township	Range	Lot Idn	Feet from the	North/South line	Feet from the	East/West line	County
---------------	---------	----------	-------	---------	---------------	------------------	---------------	----------------	--------

<sup>12</sup> Dedicated Acres W/2 - 320	<sup>13</sup> Joint or Infill	<sup>14</sup> Consolidation Code	<sup>15</sup> Order No.
--	-------------------------------	----------------------------------	-------------------------

NO ALLOWABLE WILL BE ASSIGNED TO THIS COMPLETION UNTIL ALL INTERESTS HAVE BEEN CONSOLIDATED  
OR A NON-STANDARD UNIT HAS BEEN APPROVED BY THE DIVISION

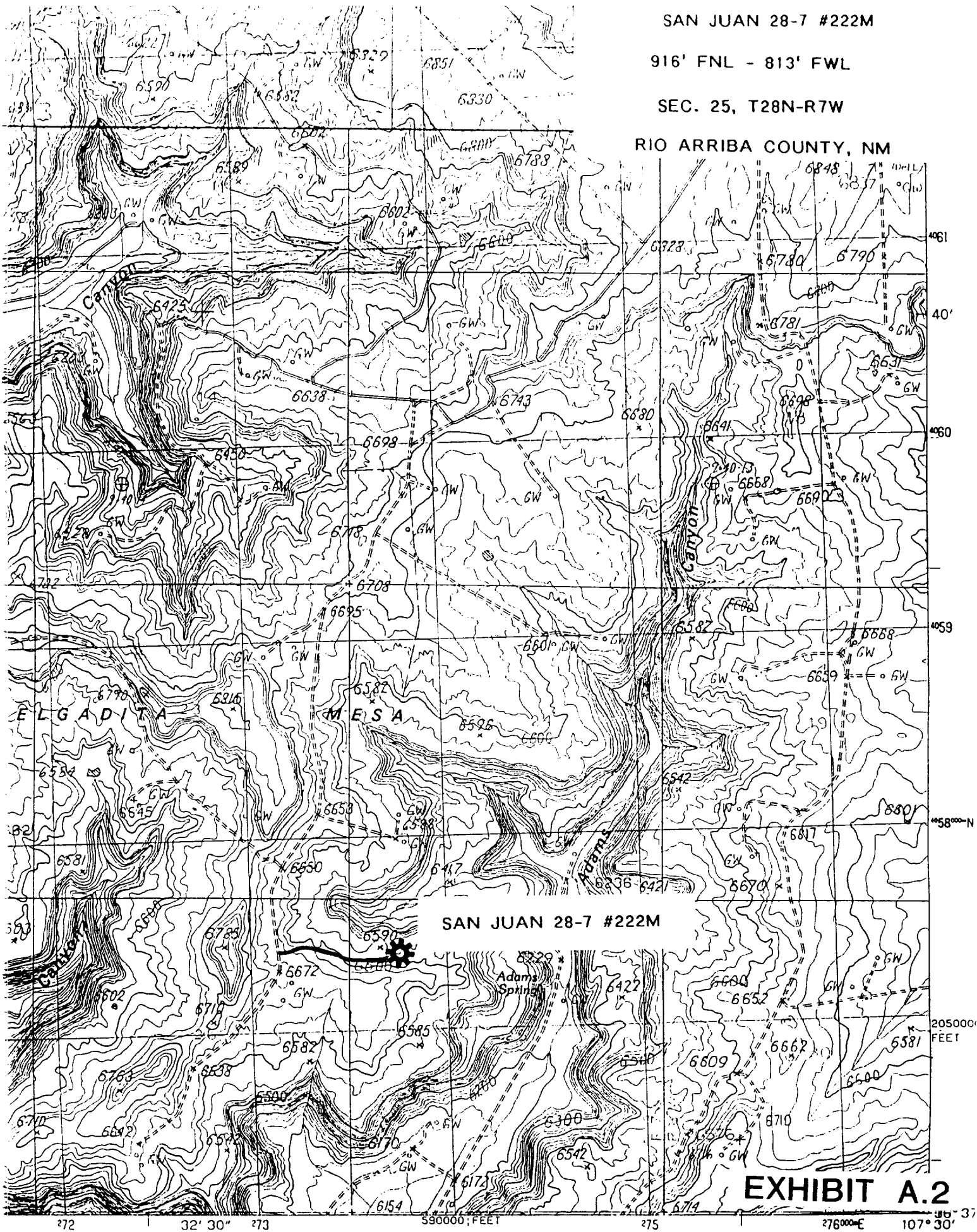
1320'	16	916'	5280'	17 OPERATOR CERTIFICATION I hereby certify that the information contained herein is true and complete to the best of my knowledge and belief  Signature Jerry W. Hoover Printed Name Sr. Conservation Coordinator Title 9/12/95 Date
5280'	SEC. 25	5280'	5280'	18 SURVEYOR CERTIFICATION I hereby certify that the well location shown on this plat was plotted from field notes of actual surveys made by me or under my supervision, and that the same is true and correct to the best of my belief. 11/11/94 Date of Survey Signature and Seal of Professional Surveyor:  HENRY P. BRADSHAW NEW MEXICO Cert. No. 1303

SAN JUAN 28-7 #222M

916' FNL - 813' FWL

SEC. 25, T28N-R7W

RIO ARRIBA COUNTY, NM



SAN JUAN 28-7 #222M

EXHIBIT A.2