

UNITED STATES  
DEPARTMENT OF THE INTERIOR  
BUREAU OF LAND MANAGEMENT

RECEIVED  
BLM

APPLICATION FOR PERMIT TO DRILL, DEEPEN, OR PLUG BACK 97 JAN 27 AM 9:53

1a. Type of Work DRILL	<b>RECEIVED</b> MAR - 3 1997	5. Lease Number SF-07952070 FARMINGTON, NM
1b. Type of Well GAS		Unit Reporting Number 8910000949A-Dk 89100009490-MV
2. Operator <b>BURLINGTON RESOURCES</b> 14538 Oil & Gas Company	<b>OIL CON. DIV.</b> DIST. 3	6. If Indian, All. or Tribe
3. Address & Phone No. of Operator PO Box 4289, Farmington, NM 87499  (505) 326-9700	7. Unit Agreement Name San Juan 28-5 Unit	8. Farm or Lease Name 7460 San Juan 28-5 Unit
4. Location of Well 900' FSL, 1815' FEL  Latitude 36° 37' 38", Longitude 107° 21' 40"	9. Well Number 65M ✓	10. Field, Pool, Wildcat 72319 Blanco Mesa Verde / 71599 Basin Dakota
14. Distance in Miles from Nearest Town 5 miles to Gobernador	11. Sec., Twn, Rge, Mer. (NMPM) 0 Sec 28, T-28N, R-5-W	12. County Rio Arriba
15. Distance from Proposed Location to Nearest Property or Lease Line 900'	13. State NM	17. Acres Assigned to Well 320 S/2 310 S/2
16. Acres in Lease	18. Distance from Proposed Location to Nearest Well, Drlg, Compl, or Applied for on this Lease 1800'	20. Rotary or Cable Tools Rotary
19. Proposed Depth 7885'	This action is subject to technical and procedural review pursuant to 43 CFR 3165.3 and appeal pursuant to 43 CFR 3165.4.	22. Approx. Date Work will Start DRILLING OPERATIONS AUTHORIZED ARE SUBJECT TO COMPLIANCE WITH ATTACHED "GENERAL REQUIREMENTS"
21. Elevations (DF, FT, GR, Etc.) 6606' GR	23. Proposed Casing and Cementing Program See Operations Plan attached	24. Authorized by: <u><i>Duane W. Spencer</i></u> Regulatory/Compliance Administrator
		<u>1-21-97</u> Date

PERMIT NO. \_\_\_\_\_ APPROVAL DATE \_\_\_\_\_  
APPROVED BY /S/ Duane W. Spencer TITLE \_\_\_\_\_ DATE FEB 28 1997

Archaeological Report to be submitted  
Threatened and Endangered Species Report to be submitted  
NOTE: This format is issued in lieu of U.S. BLM Form 3160-3

*dk*  
*E*

NMOCD

District I  
 PO Box 1980, Hobbs, NM 88241-1980  
 District II  
 PO Drawer DD, Artesia, NM 88211-0719  
 District III  
 1000 Rio Brazos Rd., Aztec, NM 87410  
 District IV  
 PO Box 2088, Santa Fe, NM 87504-2088

State of New Mexico  
 Energy, Minerals & Natural Resources Department

OIL CONSERVATION DIVISION  
 PO Box 2088  
 Santa Fe, NM 87504-2088

RECEIVED  
 Form C-1  
 Revised February 21, 19  
 Instructions on ba  
 Submit to Appropriate District Off:  
 97 JAN 27 11:50 AM '97  
 State Case - 4 Cop  
 Fee Lease - 3 Cop  
 070 FARMINGTON, N.M.  
 AMENDED REPORT

WELL LOCATION AND ACREAGE DEDICATION PLAT

API Number 30-039-25645		Pool Code 72319/71599	Pool Name Blanco Mesaverde/Basin Dakota
Property Code 7460	Property Name San Juan 28-5 Unit		Well Number 65M
GRID No. 14538	Operator Name BURLINGTON RESOURCES OIL & GAS COMPANY		Elevation 6606'

10 Surface Location

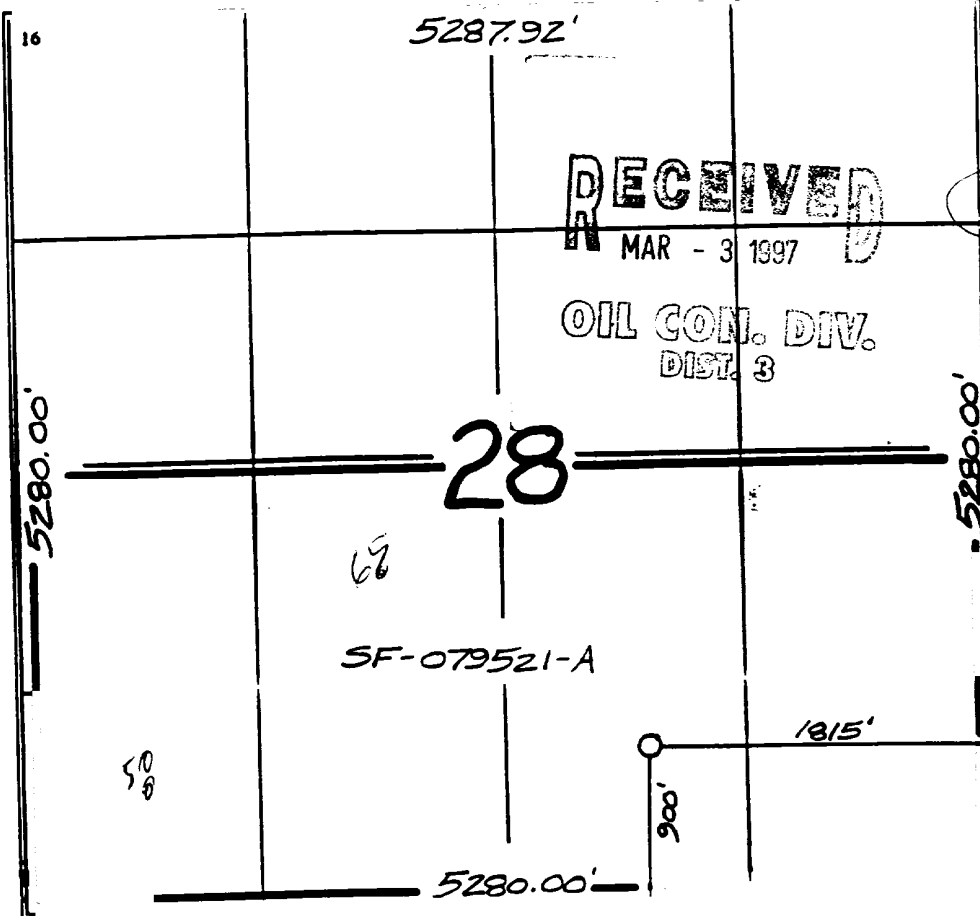
UL or lot no.	Section	Township	Range	Lot Ids	Feet from the	North/South line	Feet from the	East/West line	County
0	28	28-N	5-W		900	South	1815	East	R.A.

11 Bottom Hole Location If Different From Surface

UL or lot no.	Section	Township	Range	Lot Ids	Feet from the	North/South line	Feet from the	East/West line	County

12 Dedicated Acres MV-S/320 DK-S/320	13 Joint or Infill	14 Consolidation Code	15 Order No.
--	--------------------	-----------------------	--------------

NO ALLOWABLE WILL BE ASSIGNED TO THIS COMPLETION UNTIL ALL INTERESTS HAVE BEEN CONSOLIDATED OR A NON-STANDARD UNIT HAS BEEN APPROVED BY THE DIVISION



17 OPERATOR CERTIFICATION  
 I hereby certify that the information contained herein is true and complete to the best of my knowledge and belief.

RECEIVED  
 MAR - 3 1997  
 OIL CON. DIV.  
 DIST. 3

*Peggy Bradfield*  
 Signature  
 Peggy Bradfield  
 Printed Name  
 Regulatory Administrator  
 Title  
 1-21-97  
 Date

18 SURVEYOR CERTIFICATION  
 I hereby certify that the well location shown on this plat was plotted from field notes of actual surveys made by or under my supervision, and that the same is true and correct to the best of my belief.  
 11/16/96

Date of Survey  
 Signature and Seal of Professional Surveyor  
 NEALE C. EDWARDS  
 NEW MEXICO  
 6857  
 6857  
 Certified Professional Surveyor  
 Certificate Number

**OPERATIONS PLAN**

**Well Name:** San Juan 28-5 Unit #65M  
**Location:** 900' FSL, 1815' FEL Sec 28, T-28-N, R-5-W  
 Rio Arriba County, NM  
 Latitude 36° 37' 38", Longitude 107° 21' 40"  
**Formation:** Blanco Mesa Verde/Basin Dakota  
**Elevation:** 6606' GL

<b><u>Formation Tops:</u></b>	<b><u>Top</u></b>	<b><u>Bottom</u></b>	<b><u>Contents</u></b>
Surface	San Jose	2758'	
Ojo Alamo	2758'	3038'	aquifer
Fruitland	3038'	3438'	gas
Pictured Cliffs	3438'	3558'	gas
Lewis	3558'	4043'	gas
<b>Intermediate TD</b>	<b>3608'</b>		
Mesa Verde	4043'	4408'	gas
Chacra	4408'	5118'	
Massive Cliff House	5118'	5278'	gas
Menefee	5278'	5598'	gas
Massive Point Lookout	5598'	5808'	gas
Gallup	5808'	6808'	gas
Greenhorn	6808'	7538'	gas
Graneros	7538'	7646'	gas
Dakota	7646'	7742'	gas
<b>TD</b>	<b>7885'</b>		

**Logging Program:**

Cased hole -Gamma Ray/Neutron

**Mud Program:**

<b><u>Interval</u></b>	<b><u>Type</u></b>	<b><u>Weight</u></b>	<b><u>Vis.</u></b>	<b><u>Fluid Loss</u></b>
0- 200'	Spud	8.4-9.0	40-50	no control
200-3608'	LSND	8.4-9.0	30-60	no control
3608-7885'	Gas	n/a	n/a	n/a

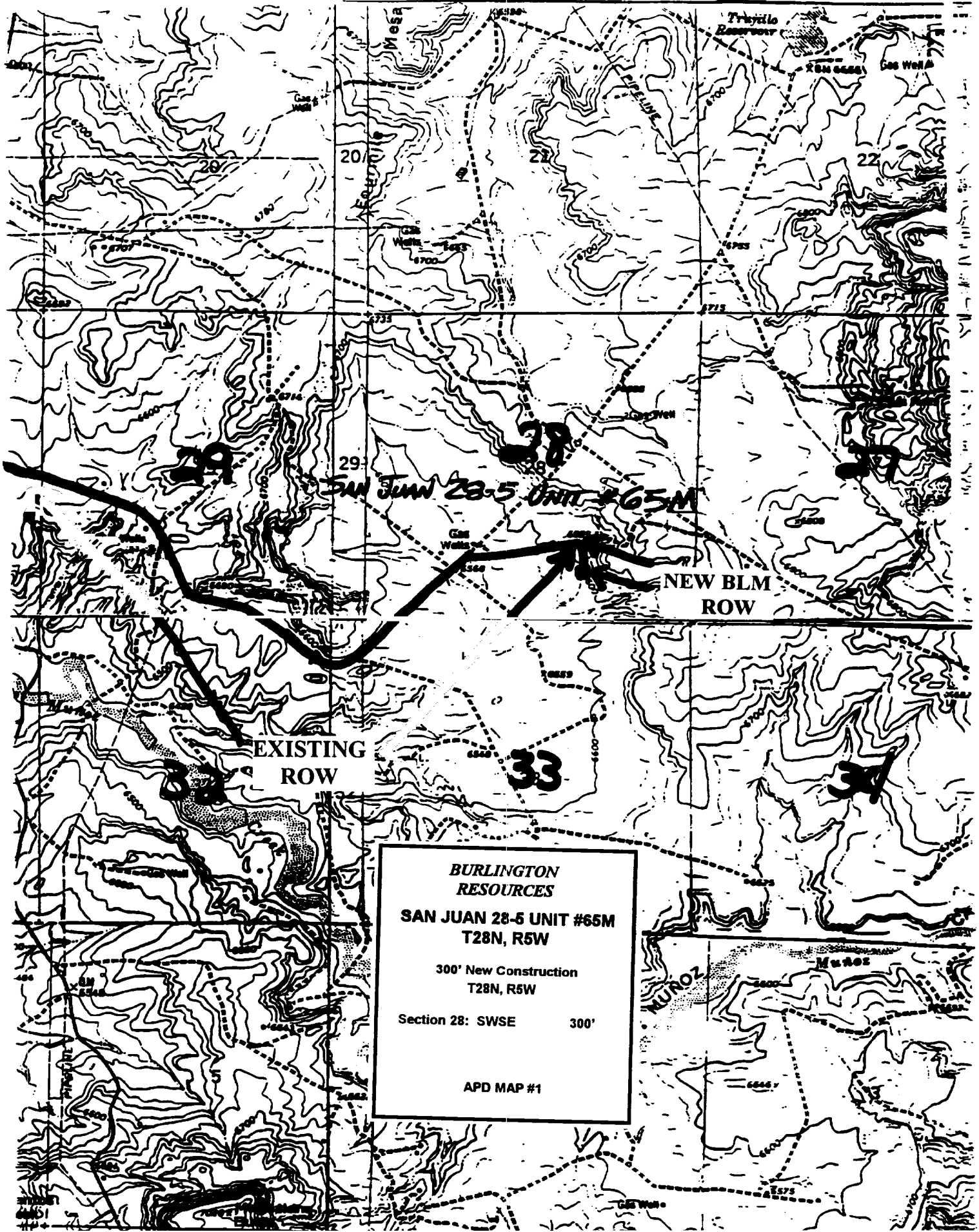
Pit levels will be visually monitored to detect gain or loss of fluid control.

**Casing Program (as listed, the equivalent, or better):**

<b><u>Hole Size</u></b>	<b><u>Depth Interval</u></b>	<b><u>Csg. Size</u></b>	<b><u>Wt.</u></b>	<b><u>Grade</u></b>
12 1/4"	0' - 200'	9 5/8"	32.3#	H-40
8 3/4"	0' - 3608'	7"	20.0#	J-55
6 1/4"	3508' - 6855'	4 1/2"	10.5#	J-55
6 1/4"	6855' - 7885'	4 1/2"	11.6#	J-55

**Tubing Program:**

0' - 7885'      2 3/8"      4.70# EUE



SAN JUAN 28-5 UNIT #65M

NEW BLM  
ROW

EXISTING  
ROW

**BURLINGTON  
RESOURCES**  
**SAN JUAN 28-5 UNIT #65M**  
**T28N, R5W**  
  
300' New Construction  
T28N, R5W  
  
Section 28: SWSE      300'  
  
APD MAP #1