

UNITED STATES
DEPARTMENT OF THE INTERIOR
BUREAU OF LAND MANAGEMENT

RECEIVED
BLM
97 JAN -1 PM 1:10
070 FARMINGTON, NM

APPLICATION FOR PERMIT TO DRILL, DEEPEN, OR PLUG BACK

1a. Type of Work DRILL	5. Lease Number SF-079050B Unit Reporting Number 8910010510-MV 891001051B-DK	
1b. Type of Well GAS	6. If Indian, All. or Tribe	
2. Operator BURLINGTON RESOURCES 14538 Oil & Gas Company	7. Unit Agreement Name San Juan 28-6 Unit	
3. Address & Phone No. of Operator PO Box 4289, Farmington, NM 37499 (505) 326-9700	8. Farm or Lease Name 7462 San Juan 28-6 Unit 9. Well Number 113M	
4. Location of Well 1190' FNL, 1730' FWL Latitude 36° 38' 10", Longitude 107° 26' 20"	10. Field, Pool, Wildcat 72319 Blanco Mesa Verde/ 71599 Basin Dakota 11. Sec., Twn, Rge, Mer. (NMPM) C Sec 26, T-28-N, R-6-W API # 30-039-25653	
14. Distance in Miles from Nearest Town 4.5 miles to Gobernador	12. County Rio Arriba	13. State NM
15. Distance from Proposed Location to Nearest Property or Lease Line 1190'	17. Acres Assigned to Well 320 W/2 320 W/2	
16. Acres in Lease	18. Distance from Proposed Location to Nearest Well, Drig, Compl, or Applied for on this Lease 2000' This action is subject to technical and procedural review pursuant to 43 CFR 3165.3 and appeal pursuant to 43 CFR 3165.4.	
19. Proposed Depth 7852'	20. Rotary or Cable Tools Rotary	
21. Elevations (DF, FT, GR, Etc.) 6575'	22. Approx. Date Work will Start	
23. Proposed Casing and Cementing Program See Operations Plan attached	DRILLING OPERATIONS AUTHORIZED ARE SUBJECT TO COMPLIANCE WITH ATTACHED "GENERAL REQUIREMENTS"	
24. Authorized by: <u><i>Regan Bradfield</i></u> Regulatory/Compliance Administrator	<u>12-30-96</u> Date	

PERMIT NO. _____ APPROVAL DATE 912 01 1997

APPROVED BY _____ TITLE _____ DATE 912 01 1997

Archaeological Report to be submitted by Arboles Contract Archaeology
Threatened and Endangered Species Report submitted by Ecosphere dated November 1996
NOTE: This format is issued in lieu of U.S. BLM Form 3160-3

OK
Q

NMOCD

District I
PO Box 1988, Hobbs, NM 88241-1988
District II
PO Drawer DD, Artesia, NM 88211-0719
District III
1000 Mile Branch Rd., Aztec, NM 87410
District IV
PO Box 2088, Santa Fe, NM 87504-2088

State of New Mexico
Energy, Minerals & Natural Resources Department

OIL CONSERVATION DIVISION
PO Box 2088
Santa Fe, NM 87504-2088

Form C-102
Revised February 21, 1994
Instructions on back
Submit to Appropriate District Office
State Lease - 4 Copies
Fee Lease - 3 Copies

070 FARMINGTON, NM

AMENDED REPORT

WELL LOCATION AND ACREAGE DEDICATION PLAT

API Number 30-039-25653		Pool Code 72319/21599	Pool Name Blanco Mesaverde/Basin Dakota
Property Code 7462	Property Name San Juan 28-6 Unit		Well Number 113M
OGRID No. 14538	Operator Name BURLINGTON RESOURCES OIL & GAS COMPANY		Elevation 6575'

10 Surface Location

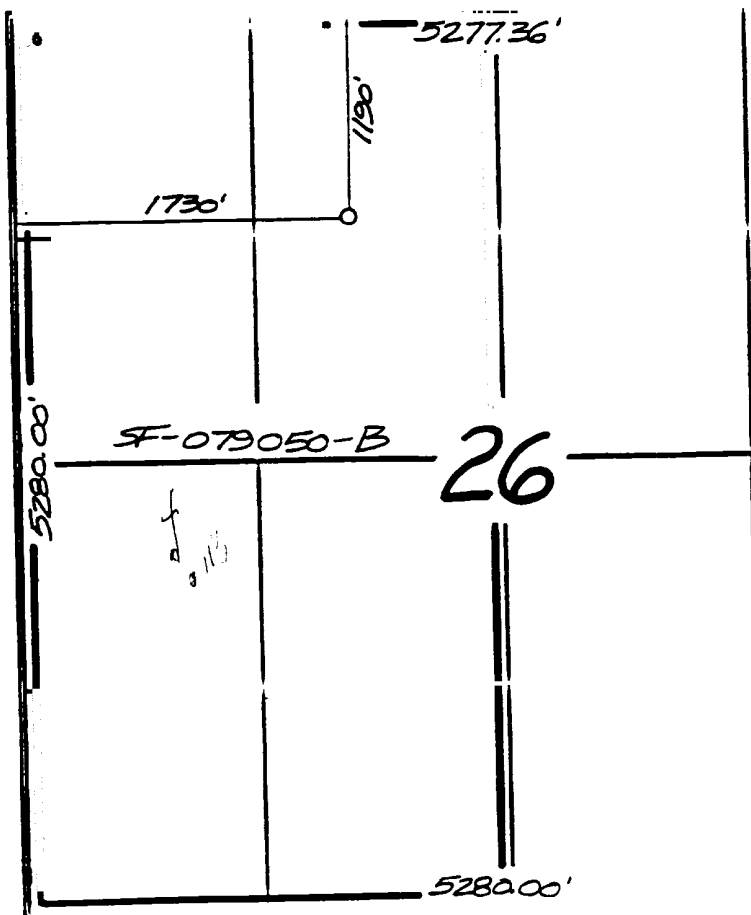
UL or lot no.	Section	Township	Range	Lot Idn	Feet from the	North/South line	Feet from the	East/West line	County
C	26	28-N	6-W		1190	North	1730	West	R.A.

11 Bottom Hole Location If Different From Surface

UL or lot no.	Section	Township	Range	Lot Idn	Feet from the	North/South line	Feet from the	East/West line	County

12 Dedicated Acres W/320-W/320	13 Joint or Infill	14 Consideration Code	15 Order No.
-----------------------------------	--------------------	-----------------------	--------------

NO ALLOWABLE WILL BE ASSIGNED TO THIS COMPLETION UNTIL ALL INTERESTS HAVE BEEN CONSOLIDATED OR A NON-STANDARD UNIT HAS BEEN APPROVED BY THE DIVISION



17 OPERATOR CERTIFICATION

I hereby certify that the information contained herein is true and complete to the best of my knowledge and belief

Peggy Bradfield
Signature
Peggy Bradfield
Printed Name
Regulatory Administrator
Title
12-30-96
Date

18 SURVEYOR CERTIFICATION

I hereby certify that the well location shown on this plat was plotted from field notes of actual surveys made by me or under my supervision, and that the same is true and correct to the best of my belief.

10/17/96
Date of Survey
HELEN C. EDWARDS
Signature



Certification #

OPERATIONS PLAN

Well Name: San Juan 28-6 Unit #113M
Location: 1190' FNL, 1730' FWL, Sec 26, T-28-N, R-6-W
 Rio Arriba County, NM
 Latitude 36° 38' 10", Longitude 107° 26' 20"
Formation: Blanco Mesa Verde/Basin Dakota
Elevation: 6575' GL

<u>Formation Tops:</u>	<u>Top</u>	<u>Bottom</u>	<u>Contents</u>
Surface	San Jose	2662'	
Ojo Alamo	2662'	2997'	aquifer
Fruitland	2997'	3387'	gas
Pictured Cliffs	3387'	3552'	gas
Lewis	3552'	3937'	gas
Intermediate TD	3602'		
Mesa Verde	3937'	5052'	gas
Massive Cliff House	5052'	5207'	gas
Menefee	5207'	5587'	gas
Massive Point Lookout	5587'	7522'	gas
Greenhorn	7522'	7632'	gas
Graneros	7632'	7737'	gas
Dakota	7737'		gas
TD (4 1/2" liner)	7852'		

Logging Program:**Mud Program:**

<u>Interval</u>	<u>Type</u>	<u>Weight</u>	<u>Vis.</u>	<u>Fluid Loss</u>
0- 200'	Spud	8.4-8.9	40-50	no control
200-3602'	LSND	8.4-8.9	30-60	no control
3602-7852'	Gas	n/a	n/a	n/a

Pit levels will be visually monitored to detect gain or loss of fluid control.

Casing Program:

<u>Hole Size</u>	<u>Depth Interval</u>	<u>Csg. Size</u>	<u>Wt.</u>	<u>Grade</u>
12 1/4"	0' - 200'	9 5/8"	36.0#	K-55
8 3/4"	0' - 3602'	7 "	23.0#	CF-50
6 1/4"	3502' - 6855'	4 1/2"	10.5#	K-55
6 1/4"	6855' - 7852'	4 1/2"	11.6#	K-55

Tubing Program:

0' - 7852'	2 3/8"	4.70# EUE
------------	--------	-----------

BOP Specifications, Wellhead and Tests:**Surface to Intermediate TD -**

11" 2000 psi minimum double gate BOP stack (Reference Figure #1).
 After nipple-up prior to drilling out surface casing, rams and casing will be tested to 600 psi for 30 minutes.

Intermediate TD to Total Depth -

11" 2000 psi minimum double gate BOP stack (Reference Figure #1).
 After nipple-up prior to drilling out intermediate casing, rams and casing will be tested to 1500 psi for 30 minutes.

Surface to Total Depth -

2" nominal, 2000 psi minimum choke manifold (Reference Figure #3).

BURLINGTON
RESOURCES

SAN JUAN 28-6 UNIT #113M
T28N, R6W

1000' New Construction
T28N, R6W

Section 26: NENW 1000'

APD MAP #1

15

13

22

23

24

27

26

25

34

35

36

NEW BLM
ROW

R-O-W
EXISTING

SJ 28-6 #113M

N
S
A
H

