

UNITED STATES
DEPARTMENT OF THE INTERIOR
BUREAU OF LAND MANAGEMENT

RECEIVED
BLM

APPLICATION FOR PERMIT TO DRILL, DEEPEN, OR PLUG BACK

57 FEB 10 PM 1:23

1a. Type of Work DRILL	RECEIVED MAR 3 1 1997 OIL CON. DIV. DIST. 3	5. Lease Number SF-079522 XO FARMINGTON, NM
1b. Type of Well GAS		Unit Reporting Number 8910000949A-Dk 89100009490-MV
2. Operator BURLINGTON RESOURCES 14538 Oil & Gas Company	7. Unit Agreement Name San Juan 28-5 Unit	
3. Address & Phone No. of Operator PO Box 4289, Farmington, NM 87499 (505) 326-9700	8. Farm or Lease Name 7460 San Juan 28-5 Unit 9. Well Number 45M	
4. Location of Well 1450' FNL, 1190' FWL Latitude 36° 37.3, Longitude 107° 18.9'	10. Field, Pool, Wildcat 72319 Blanco Mesa Verde/✓ 71599 Basin Dakota/✓ 11. Sec, Twn, Rge, Mer. (NMPM) E Sec 36, T-28N, R-5-W ✓ API # 30-039-25665 ✓	
14. Distance in Miles from Nearest Town 6.5 miles to Gobernador	12. County Rio Arriba	13. State NM
15. Distance from Proposed Location to Nearest Property or Lease Line 1190'	17. Acres Assigned to Well W/345.39 DK/344.74 MV	
16. Acres in Lease		
18. Distance from Proposed Location to Nearest Well, Drlg, Compl, or Applied for on this Lease 1200'	20. Rotary or Cable Tools Rotary	
19. Proposed Depth 8034'	22. Approx. Date Work will Start	
21. Elevations (DF, FT, GR, Etc.) 6707' GR		
23. Proposed Casing and Cementing Program See Operations Plan attached		
24. Authorized by: <u><i>Regan Bradford</i></u> Regulatory/Compliance Administrator	Date <u>1-21-97</u>	

PERMIT NO. _____ APPROVAL DATE MAR 26 1997
APPROVED BY _____ TITLE _____ DATE MAR 26 1997

Archaeological Report to be submitted
Threatened and Endangered Species Report to be submitted
NOTE: This format is issued in lieu of U.S. BLM Form 3160-3

OK

NMOCD

District I
PO Box 1988, Hobbs, NM 88241-1988
District II
PO Drawer DD, Aramco, NM 88211-0719
District III
1000 Rio Hondo Rd., Aztec, NM 87410
District IV
PO Box 2088, Santa Fe, NM 87504-2088

State of New Mexico
Energy, Minerals & Natural Resources Department

OIL CONSERVATION DIVISION
PO Box 2088
Santa Fe, NM 87504-2088

RECEIVED
MAR 1 1997

Form C
Revised February 21, 1994
Instructions on
Submit to Appropriate District Office
State Lease - 4 Co
Fee Lease - 3 Co
☐ AMENDED REPORT

WELL LOCATION AND ACREAGE DEDICATION PLAT

API Number 30-039-25665	Pool Code 72319/71599	Pool Name Blanco Mesaverde/Basin Dakota
Property Code 7460	Property Name San Juan 28-5 Unit	Well Number 45M
GRID No. 14538	Operator Name BURLINGTON RESOURCES OIL & GAS COMPANY	Elevation 6707'

10 Surface Location

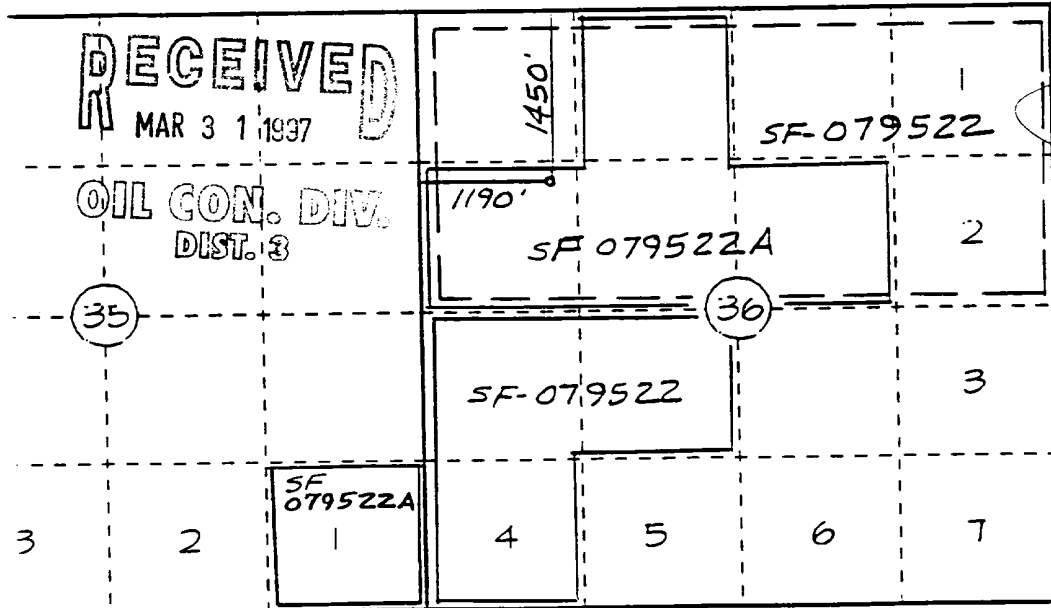
UL or lot no.	Section	Township	Range	Lot Idn	Feet from the	North/South line	Feet from the	East/West line	County
E	36	28-N	5-W		1450	North	1190	West	R.A.

11 Bottom Hole Location If Different From Surface

UL or lot no.	Section	Township	Range	Lot Idn	Feet from the	North/South line	Feet from the	East/West line	County

12 Dedicated Acres 44.74	13 Joint or Infill OK-W/345	14 Consolidation Code 39	15 Order No.
-----------------------------	--------------------------------	-----------------------------	--------------

NO ALLOWABLE WILL BE ASSIGNED TO THIS COMPLETION UNTIL ALL INTERESTS HAVE BEEN CONSOLIDATED
OR A NON-STANDARD UNIT HAS BEEN APPROVED BY THE DIVISION



17 OPERATOR CERTIFICATION

I hereby certify that the information contained herein is true and complete to the best of my knowledge and belief.

Signature
Peggy Bradfield
Printed Name
Regulatory Administrator
Title
1-21-97
Date

18 SURVEYOR CERTIFICATION

I hereby certify that the well location shown on this plat was plotted from field notes of actual surveys made or under my supervision, and that the same is true and correct to the best of my belief.

10/25/96

Date of Survey
Signature and Seal of Surveyor
NEEDS C. EDWARDS
6857
6857
Certificate Number

OPERATIONS PLAN

Well Name: San Juan 28-5 Unit #45M
Location: 1450' FNL, 1190' FWL Sec 36, T-28-N, R-5-W
 Rio Arriba County, NM
 Latitude 36° 37.3', Longitude 107° 13.9'
Formation: Blanco Mesa Verde/Basin Dakota
Elevation: 6707' GL

<u>Formation Tops:</u>	<u>Top</u>	<u>Bottom</u>	<u>Contents</u>
Surface	San Jose	2939'	
Ojo Alamo	2939'	3179'	aquifer
Fruitland	3179'	3594'	gas
Pictured Cliffs	3594'	3684'	gas
Lewis	3684'	4379'	gas
Intermediate TD	3734'		
Mesa Verde	4379'	4559'	gas
Chacra	4559'	5269'	
Massive Cliff House	5269'	5419'	gas
Menefee	5419'	5719'	gas
Massive Point Lookout	5719'	6934'	gas
Gallup	6934'	7689'	gas
Greenhorn	7689'	7796'	gas
Graneros	7796'	7894'	gas
Dakota	7894'		gas
TD	8034'		

Logging Program:

Cased hole -Gamma Ray/Neutron

Mud Program:

<u>Interval</u>	<u>Type</u>	<u>Weight</u>	<u>Vis.</u>	<u>Fluid Loss</u>
0- 200'	Spud	8.4-9.0	40-50	no control
200-3734'	LSND	8.4-9.0	30-60	no control
3734-8034'	Gas	n/a	n/a	n/a

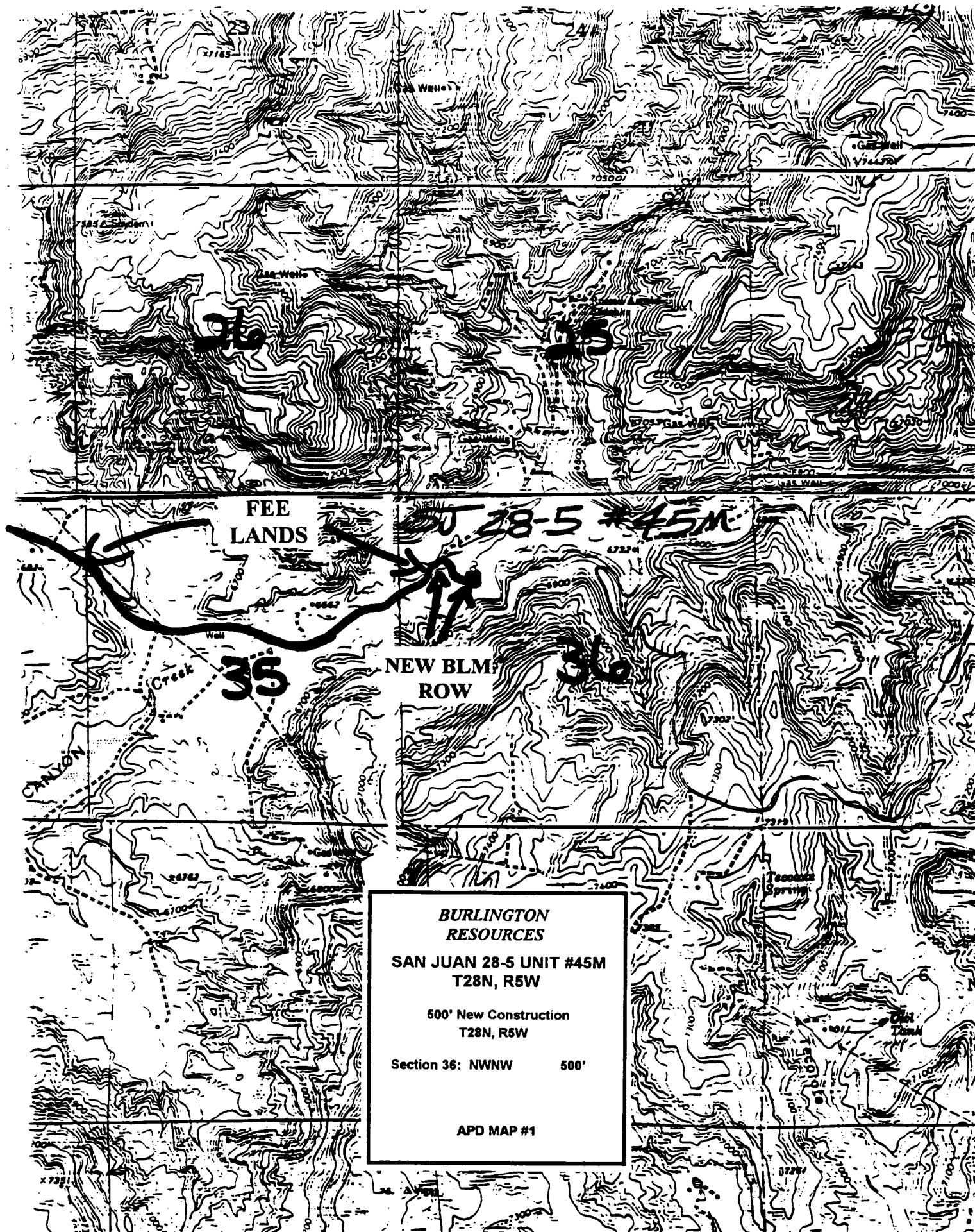
Pit levels will be visually monitored to detect gain or loss of fluid control.

Casing Program (as listed, the equivalent, or better):

<u>Hole Size</u>	<u>Depth Interval</u>	<u>Csg. Size</u>	<u>Wt.</u>	<u>Grade</u>
12 1/4"	0' - 200'	9 5/8"	32.3#	H-40
8 3/4"	0' - 3734'	7"	20.0#	J-55
6 1/4"	3634' - 6855'	4 1/2"	10.5#	J-55
6 1/4"	6855' - 8034'	4 1/2"	11.6#	J-55

Tubing Program:

0' - 8034' 2 3/8" 4.70# EUE



FEE
LANDS

28-5 #45M

NEW BLM
ROW

35

36

BURLINGTON
RESOURCES
SAN JUAN 28-5 UNIT #45M
T28N, R5W

500' New Construction
T28N, R5W

Section 36: NWNW 500'

APD MAP #1



STATE OF NEW MEXICO
ENERGY, MINERALS AND NATURAL RESOURCES DEPARTMENT

OIL CONSERVATION DIVISION
2040 S. PACHECO
SANTA FE, NEW MEXICO 87505
(505) 827-7131

March 31, 1997

RECEIVED
APR - 2 1997

OIL CON. DIV.
DIST. 3

Burlington Resources Oil & Gas Company
P. O. Box 4289
Farmington, New Mexico 87499-4289
Attention: Peggy Bradfield

Administrative Order NSL-405-A

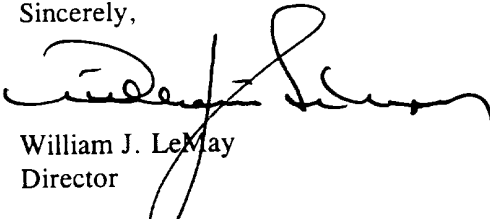
Dear Ms. Bradfield:

Reference is made to your application dated March 26, 1997 for an unorthodox gas well location for both the Blanco-Mesaverde and Basin-Dakota Pools for the proposed San Juan "28-5" Unit Well No. 45-M to be drilled 1450 feet from the North line and 1190 feet from the West line (Unit E) of Section 36, Township 28 North, Range 5 West, NMPM, Rio Arriba County, New Mexico.

Production from the Basin-Dakota Pool is to be included in an existing non-standard 345.39-acre gas spacing and proration unit comprising Lot 1 of Section 35, Township 28 North, Range 5 West, NMPM, Rio Arriba County, New Mexico and Lot 4, the SW/4 NE/4, the NE/4 NW/4, the S/2 NW/4, and the N/2 SW/4 of said Section 36 (approved by Division Order No. R-2948, dated August 16, 1965), which is currently dedicated to Burlington Resources' San Juan "28-5" Unit Well No. 45 (API No. 30-039-20063), located at an unorthodox gas well location (approved by Division Administrative Order NSL-405, dated August 23, 1967) 1500 feet from the North line and 1840 feet from the East line (Unit G) of said Section 36 and that area comprising Lots 1 and 2, the W/2 NE/4, and the NW/4 (N/2 equivalent) of said Section 36 being a standard 344.74 acres gas spacing and proration unit for the Blanco-Mesaverde Pool, are to be dedicated to said well.

By the authority granted me under the provisions of Rule 2(d) of the "*General Rules For The Prorated Gas Pools of New Mexico/Special Rules and Regulations For The Blanco-Mesaverde Pool/Special Rules and Regulations for the Basin-Dakota Pool*", as promulgated by Division Order No. R-8170, as amended, the above-described unorthodox gas well location for the San Juan "28-5" Unit Well No. 45-M is hereby approved.

Sincerely,


William J. LeMay
Director

WJL/MES/kv

cc: Oil Conservation Division - Aztec
U. S. Bureau of Land Management - Farmington
File: NSL-405