



**OIL CONSERVATION DIVISION  
2040 South Pacheco Street  
Santa Fe, New Mexico 87505  
(505) 827-7131**

**Burlington Resources Oil & Gas Company**  
**P. O. Box 4289**  
**Farmington, New Mexico 87499-4289**  
**Attention: Peggy Bradfield**

**Administrative Order NSL-3908**

Reference is made to your application dated October 31, 1997 for an unorthodox "infill" gas well location for both the Blanco-Mesaverde and Basin-Dakota Pools for the proposed San Juan "28-6" Unit Well No. 210-M to be drilled 1685 feet from the North line and 900 feet from the West line (Unit F) of irregular Section 31, Township 28 North, Range 6 West, NMPM, Rio Arriba County, New Mexico.

Production from the Blanco-Mesaverde Pool is to be included in an existing standard 268.99-acre gas spacing and proration unit comprising Lots 1, 2, 3, 4, and 5, the E/2 NW/4, and the NE/4 SW/4 (the W/2 equivalent) of said Section 31 which is currently dedicated to Burlington Resources' San Juan "28-6" Unit Well No. 17 (**API No. 30-039-07236**), located 1555 feet from the South line and 825 feet from the West line (Lot 3/Unit L) of said Section 31 and production from the Basin-Dakota Pool is to be included in an existing non-standard 334.79-acre gas spacing and proration unit (approved by Division Order No. R-2948, dated August 16, 1965) comprising Lot 4 and the SE/4 SW/4 (the S/2 SW/4 equivalent) of irregular Section 30 and Lots 1, 2, 3, 4, and 5, the E/2 NW/4, and the NE/4 SW/4 (the W/2 equivalent) of Section 31, both in Township 28 North, Range 6 West, NMPM, Rio Arriba County, New Mexico, which is currently dedicated to Burlington Resources' San Juan "28-6" Unit Well No. 210 (**API No. 30-039-20841**), located at a standard gas well location 1850 feet from the South line and 1190 feet from the West line (Unit K) of said Section 31.

By the authority granted me under the provisions of Rule 2(d) of the "General Rules for the Prorated Gas Pools of New Mexico/Special Rules and Regulations for the Blanco-Mesaverde Pool/Special Rules and Regulations for the Basin-Dakota Pool," as promulgated by Division Order No. R-8170, as amended, the above-described unorthodox "infill" gas well location for the San Juan "28-6" Unit Well No. 210-M is hereby approved.

William J. LeMay  
Director

WJL/MES/kv

cc: Oil Conservation Division - Aztec  
U. S. Bureau of Land Management - Farmington

# BURLINGTON RESOURCES

SAN JUAN DIVISION

October 31, 1997

Mr. William LeMay  
New Mexico Oil Conservation Division  
2040 South Pacheco  
Santa Fe, New Mexico 87505

RECEIVED  
NOV - 3 1997  
OIL CON. DIV.  
SANTA FE

Re: San Juan 28-6 Unit #210M  
1685'FNL, 900'FWL Section 31, T-28-N, R-6-W, Rio Arriba County, New Mexico  
API # 30-039-not assigned

Dear Mr. LeMay:

Burlington Resources is applying for administrative approval of an unorthodox "infill" gas well location for both the Mesa Verde and Dakota pools. This application for the referenced location is due to terrain, the presence of archaeology, and at the request of the Bureau of Land Management. We have received Order DHC-1692 for commingling these pools.

Production from the Blanco Mesa Verde pool is to be included in an existing 268.99 gas spacing and proration unit comprising the W/2 of said Section 31 which is currently dedicated to Burlington Resources' San Juan 28-6 Unit #17 (API 30-039-07236), located at a standard gas well location of 1555'FSL, 825'FWL (Unit L) of said Section 31. Production from the Basin Dakota pool is to be included in an existing 334.79 gas spacing and proration unit comprising Lot 4, SE/4 of the SW/4 of Section 30, plus Lots 1, 2, 3, 4, and 5, the NE/4 of the SW/4 and the E/2 of the NW/4 of said Section 31 which is currently dedicated to Burlington Resources' San Juan 28-6 Unit #210 (API 30-039-20841), located at a standard gas well location of 1850'FSL, 1190'FWL of said Section 31 (Unit K). Attached is Order R-2948 dated August 16, 1965 and Order R-2948-A dated February 11, 1969 covering the non-standard gas proration units.

We had previously submitted this application, and so are re-applying to include the following information. Attached is a plat from our computer mapping system showing the well in reference to the interior boundary at an approximate distance of 50'; also attached is a map for the San Juan 28-6 Unit, showing the placement of this well relative to the unit boundaries and participating areas.

The following attachments are for your review:

1. Application for Permit to Drill.
2. Completed C-102 at referenced location.
3. Offset operators/owners plat.
4. 7.5 minute topographic map showing the orthodox windows, and enlargement of the map to define topographic features.
5. Map from archaeological report showing sites.

We appreciate your earliest reconsideration of this application.

Sincerely,




Peggy Bradfield

Regulatory/Compliance Administrator

xc: NMOCD - Aztec District Office and Bureau of Land Management - Farmington

UNITED STATES  
DEPARTMENT OF THE INTERIOR  
BUREAU OF LAND MANAGEMENT

APPLICATION FOR PERMIT TO DRILL, DEEPEN, OR PLUG BACK

<b>1a. Type of Work</b> DRILL	<b>5. Lease Number</b> SF-080430A <b>Unit Reporting Number</b> 891001051B - Dk 8910010510 - MV
<b>1b. Type of Well</b> GAS	<b>6. If Indian, All. or Tribe</b>
<hr/>	
<b>2. Operator</b> <b>BURLINGTON</b> <b>RESOURCES</b> Oil & Gas Company	<b>7. Unit Agreement Name</b> San Juan 28-6 Unit
<hr/>	
<b>3. Address &amp; Phone No. of Operator</b> PO Box 4289, Farmington, NM 87499  (505) 326-9700	<b>8. Farm or Lease Name</b> San Juan 28-6 Unit <b>9. Well Number</b> 210M
<hr/>	
<b>4. Location of Well</b> 1685' FNL, 900' FWL  Latitude 36° 37.2, Longitude 107° 30.7	<b>10. Field, Pool, Wildcat</b> Blanco Mesa Verde/ Basin Dakota <b>11. Sec., Twn, Rge, Mer. (NMPM)</b> Sec 31, T-28-N, R-6-W <b>API #</b> 30-039-
<hr/>	
<b>14. Distance in Miles from Nearest Town</b> 6 miles to Gobernador	<b>12. County</b> <b>13. State</b> Rio Arriba      NM
<hr/>	
<b>15. Distance from Proposed Location to Nearest Property or Lease Line</b> 900'	<b>17. Acres Assigned to Well</b> 334.79; 268.99 W/2
<b>16. Acres in Lease</b>	<b>18. Distance from Proposed Location to Nearest Well, Drlg, Compl, or Applied for on this Lease</b> 1500'
<b>19. Proposed Depth</b> 7811'	<b>20. Rotary or Cable Tools</b> Rotary
<hr/>	
<b>21. Elevations (DF, FT, GR, Etc.)</b> 6579' GR	<b>22. Approx. Date Work will Start</b>
<hr/>	
<b>23. Proposed Casing and Cementing Program</b> See Operations Plan attached	
<hr/>	
<b>24. Authorized by:</b>  Regulatory/Compliance Administrator	7-11-97 Date

PERMIT NO. \_\_\_\_\_ APPROVAL DATE \_\_\_\_\_

APPROVED BY \_\_\_\_\_ TITLE \_\_\_\_\_ DATE \_\_\_\_\_

Archaeological Report to be submitted by Arboles Contract Archaeology

Threatened and Endangered Species Report to be submitted

NOTE: This format is issued in lieu of U.S. BLM Form 3160-3

District I  
PO Box 1980, Hobbs, NM 88241-1980

District II  
PO Drawer 00, Artesia, NM 88211-0719

District III  
1000 Rio Brazos Rd., Aztec, NM 87410

District IV  
PO Box 2088, Santa Fe, NM 87504-2088

State of New Mexico  
Energy, Minerals & Natural Resources Department

OIL CONSERVATION DIVISION  
PO Box 2088  
Santa Fe, NM 87504-2088

Revised February  
Instructions  
Submit to Appropriate Dist  
State Lease  
Fee Lease

☐ AMENDED

WELL LOCATION AND ACREAGE DEDICATION PLAT

API Number 30-039-		Pool Code 72319/71599	Pool Name Blanco Mesaverde/Basin Dakota
Property Code 7462	Property Name San Juan 28-6 Unit		Well 2.
GRID No. 14538	Operator Name BURLINGTON RESOURCES OIL & GAS COMPANY		Est 65

10 Surface Location

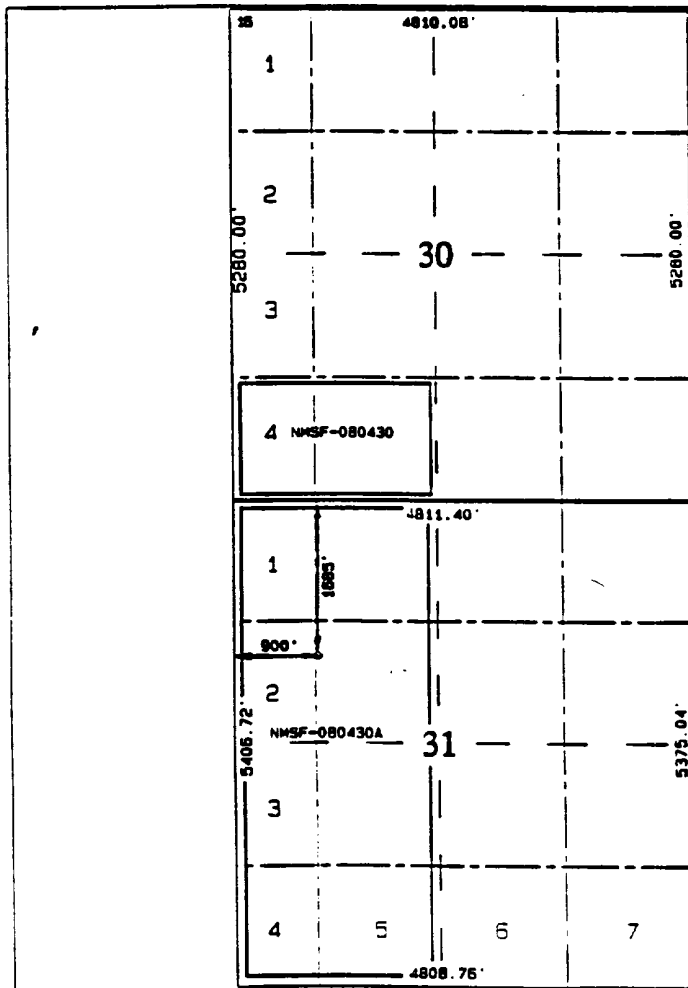
UL or lot no.	Section	Township	Range	Lot 1st	Feet from the	North/South line	Feet from the	East/West line	R1
F	31	28N	6W		1685	North	900	West	R1

11 Bottom Hole Location If Different From Surface

UL or lot no.	Section	Township	Range	Lot 1st	Feet from the	North/South line	Feet from the	East/West line

12 Dedication Acres MV-W 268.99 DK- 334.79	13 Unit or Infill	14 Consolidation Code	15 Order No.
--	-------------------	-----------------------	--------------

NO ALLOWABLE WILL BE ASSIGNED TO THIS COMPLETION UNTIL ALL INTERESTS HAVE BEEN CON  
OR A NON-STANDARD UNIT HAS BEEN APPROVED BY THE DIVISION



17 OPERATOR CERTI  
I hereby certify that the infor  
herein is true and complete to  
knowledge and belief

*Peggy Bradfield*  
Signature

Peggy Bradfield

Printed Name

Regulatory Admi  
Title

7-11-9

Date

18 SURVEYOR CERTI  
I hereby certify that the we  
on this plat was plotted fro  
actual surveys made by me or  
supervision, and that the sea  
correct to the best of my be

6/10/97  
Date of Survey

Signature and Seal of Surveyor

NEW MEXICO  
6857

6857

Certificate Number

OPERATIONS PLAN

**Well Name:** San Juan 28-6 Unit #210M  
**Location:** 1685' FNL, 900' FWL Sec 31, T-28-N, R-6-W  
 Rio Arriba County, NM  
 Latitude 36° 37.2, Longitude 107° 30.7  
**Formation:** Blanco Mesa Verde/Basin Dakota  
**Elevation:** 6579' GL

<u>Formation Tops:</u>	<u>Top</u>	<u>Bottom</u>	<u>Contents</u>
Surface	San Jose	2526'	
Ojo Alamo	2526'	2893'	aquifer
Fruitland	2893'	3298'	gas
Pictured Cliffs	3298'	3411'	gas
Lewis	3411'	3771'	gas
Intermediate TD	3511'		
Mesa Verde	3771'	4231'	gas
Chacra	4231'	4931'	
Massive Cliff House	4931'	5076'	gas
Menefee	5076'	5486'	gas
Massive Point Lookout	5486'	6711'	gas
Gallup	6711'	7456'	gas
Greenhorn	7456'	7561'	gas
Graneros	7561'	7373'	gas
Dakota	7673'		gas
TD (4 1/2" liner)	7811'		

Logging Program:

Cased hole - CBL - TD to 200' above TOC, GR/CNL across MV/Dk

Mud Program:

<u>Interval</u>	<u>Type</u>	<u>Weight</u>	<u>Vis.</u>	<u>Fluid Loss</u>
0- 200'	Spud	8.4-9.0	40-50	no control
200-3511'	LSND	8.4-9.0	30-60	no control
3511-7811'	Gas	n/a	n/a	n/a

Pit levels will be visually monitored to detect gain or loss of fluid control.

Casing Program (as listed, the equivalent, or better):

<u>Hole Size</u>	<u>Depth Interval</u>	<u>Csq. Size</u>	<u>Wt.</u>	<u>Grade</u>
12 1/4"	0' - 200'	9 5/8"	32.3#	WC-50
8 3/4"	0' - 3511'	7"	20.0#	J-55
6 1/4"	3411' - 6855'	4 1/2"	10.5#	J-55
6 1/4"	6855' - 7811'	4 1/2"	11.6#	J-55

Tubing Program:

0' - 7811'      2 3/8"      4.70# EUE

**BOP Specifications, Wellhead and Tests:****Surface to Intermediate TD -**

11" 2000 psi minimum double gate BOP stack (Reference Figure #1). After nipple-up prior to drilling out surface casing, rams and casing will be tested to 600 psi for 30 minutes.

**Intermediate TD to Total Depth -**

11" 2000 psi minimum double gate BOP stack (Reference Figure #1). After nipple-up prior to drilling out intermediate casing, rams and casing will be tested to 1500 psi for 30 minutes.

**Surface to Total Depth -**

2" nominal, 2000 psi minimum choke manifold (Reference Figure #3).

**Completion Operations -**

7 1/16" 2000 psi double gate BOP stack (Reference Figure #2). After nipple-up prior to completion, pipe rams, casing and liner top will be tested to 2000 psi for 15 minutes.

**Wellhead -**

9 5/8" x 7" x 2 3/8" x 3000 psi tree assembly.

**General -**

- Pipe rams will be actuated once each day and blind rams will be actuated once each trip to test proper functioning.
- An upper kelly cock valve with handle available and drill string valves to fit each drill string will be available on the rig floors at all times.
- BOP pit level drill will be conducted weekly for each drilling crew.
- All BOP tests and drills will be recorded in daily drilling reports.
- Blind and pipe rams will be equipped with extension hand wheels.

**Cementing:**

9 5/8" surface casing - cement with 163 sx Class "B" cement with 1/4# flocele/sx and 2% calcium chloride (188 cu.ft. of slurry, 200% excess to circulate to surface). WOC 12 hrs. Test casing to 600 psi for 30 minutes.

Saw tooth guide shoe on bottom. Bowspring centralizers will be run in accordance with Onshore Order #2.

**7" intermediate casing -**

Lead w/283 sx Class "B" w/3% medisilicate, 10# gilsonite/sx and 1/2# flocele/sx. Tail w/90 sx 50/50 Class "B" Poz w/2% calcium chloride, 2% gel, 1/2# flocele/sx and 10# gilsonite/sx (924 cu.ft. of slurry, 75% excess to circulate to surface.) WOC minimum of 12 hours before drilling out intermediate casing. If cement does not circulate to surface, a CBL will be run during completion operations to determine TOC. Test casing to 1500 psi for 30 minutes.

Cement nose guide shoe on bottom with float collar spaced on top of shoe joint. Bowspring centralizers spaced every other joint off bottom, to the base of the Ojo Alamo at 2893'. Two turbolating centralizers at the base of the Ojo Alamo at 2893'. Bowspring centralizers spaced every fourth joint from the base of the Ojo Alamo to the base of the surface casing.

#### 4 1/2" Production Liner -

Cement to cover minimum of 100' of 4 1/2" x 7" overlap. Lead with 106 sx 65/35 Class "B" poz with 6% gel, 5# gilsonite/sx and 1/4# flocele/sx. Tail with 310 sx 50/50 Class "B" Poz with 2% gel, 1/4# flocele/sx, 5# gilsonite/sx, and 0.4% fluid loss additive (609 cu.ft., 35% excess to cement 4 1/2" x 7" overlap). WOC a minimum of 18 hrs prior to completing.

Cement float shoe on bottom with float collar spaced on top of shoe joint.

Note: To facilitate higher hydraulic stimulation completion work, no liner hanger will be used. In its place, a long string of 4 1/2" casing will be run and cemented with a minimum of 100' of cement overlap between the 4 1/2" x 7" casing strings. After completion of the well, a 4 1/2" retrievable bridge plug will be set below the top of cement in the 4 1/2" x 7" overlap. The 4 1/2" casing will then be backed off above the top of cement in the 4 1/2" x 7" overlap and laid down. The liner top can then be pressure tested to ensure a seal between the liner top and the 7" casing has been achieved. The test pressure shall be the maximum anticipated pressure to which the seal will be exposed (700 psi for the Mesa Verde and 2500 psi for the Dakota). The 4 1/2" bridge plug will then be retrieved and the production tubing will be run to produce the well.

- If hole conditions permit, an adequate water spacer will be pumped ahead of each cement job to prevent cement/ mud contamination or cement hydration.
- The pipe will be rotated and/or reciprocated, if hole conditions permit.

#### Special Drilling Operations (Gas/Mist Drilling):

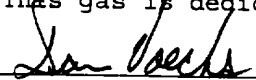
The following equipment will be operational while gas/mist drilling:

- An anchored blooie line will be utilized to discharge all cuttings and circulating medium to the blow pit a minimum of 100' from the wellhead.
- The blooie line will be equipped with an automatic igniter or pilot light.
- Compressors will be located a minimum of 100' from the wellhead in the opposite direction from the blooie line.
- Engines will have spark arresters or water cooled exhaust.
- Deduster equipment will be utilized.
- The rotating head will be properly lubricated and maintained.
- A float valve will be utilized above the bit.
- Mud circulating equipment, water, and mud materials will be sufficient to maintain control of the well.

Additional Information:

- The Dakota and Mesa Verde formations will be completed and commingled.
- No abnormal temperatures or hazards are anticipated.
- Anticipated pore pressures are as follows:

Fruitland Coal	800 psi
Pictured Cliffs	800 psi
Mesa Verde	700 psi
Dakota	2500 psi
- Sufficient LCM will be added to the mud system to maintain well control, if lost circulation is encountered.
- The west half is dedicated to the Mesa Verde and Dakota in this well.
- This gas is dedicated.

  
\_\_\_\_\_  
Drilling Engineer

7/14/97  
\_\_\_\_\_  
Date



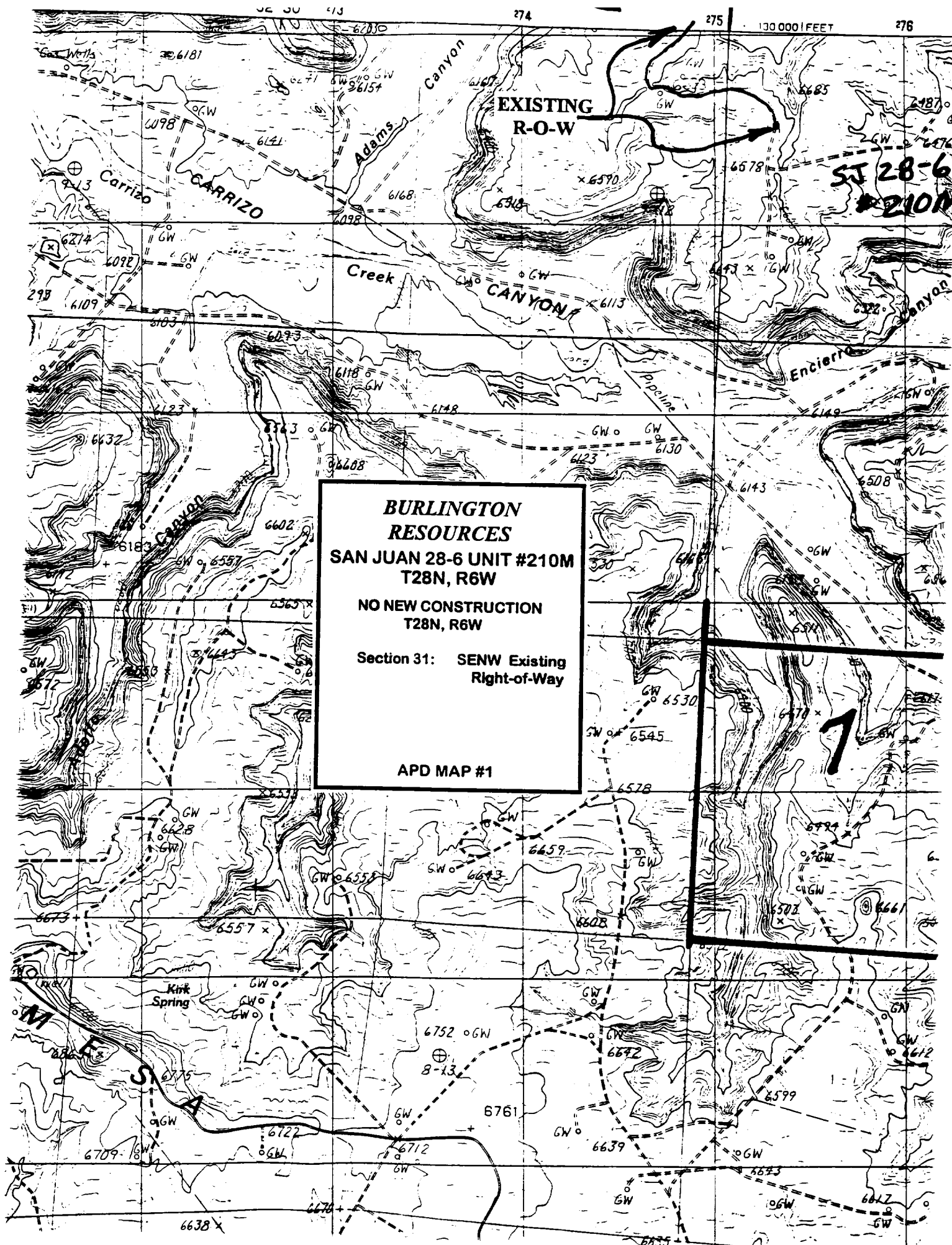
# ***BURLINGTON RESOURCES***

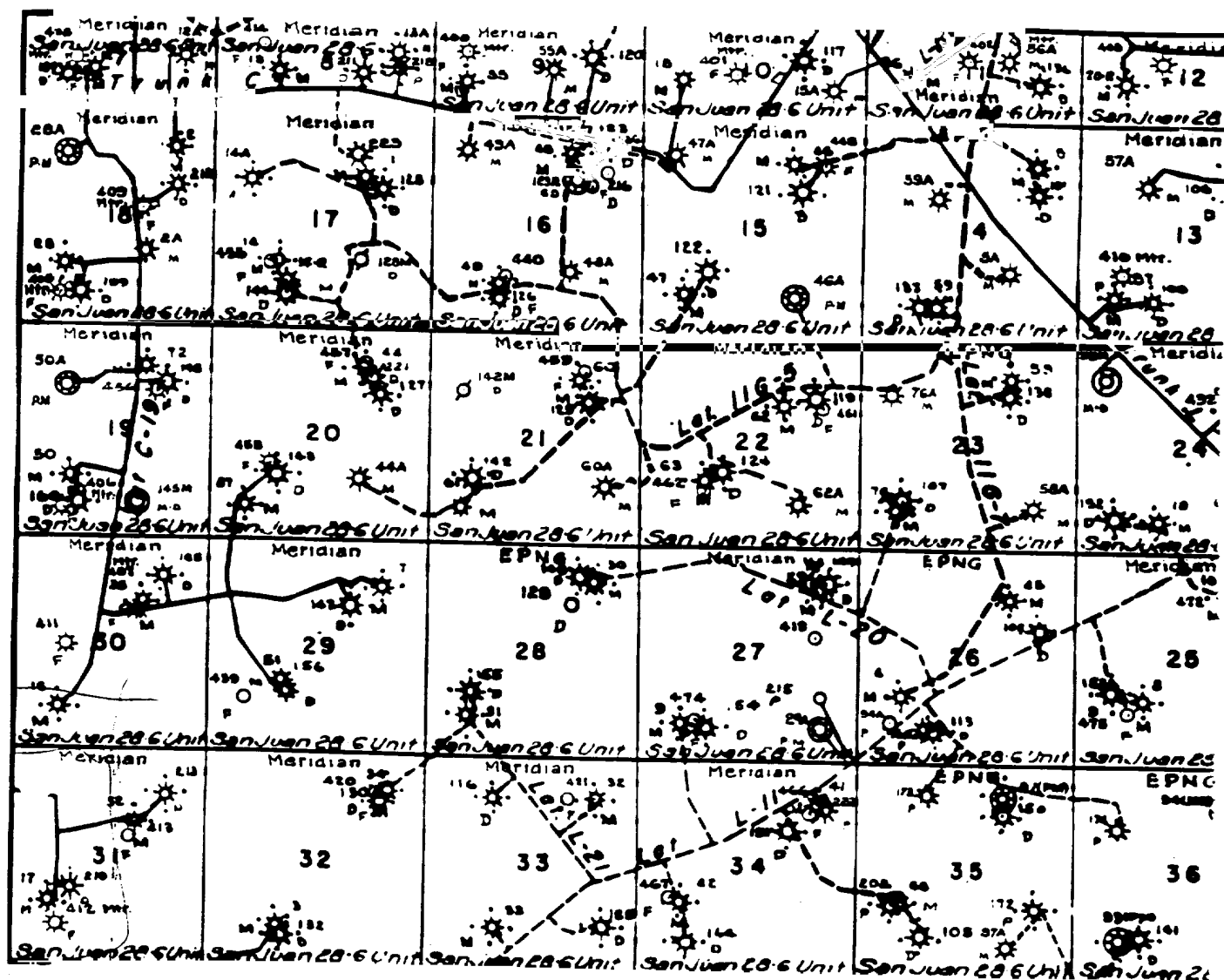
San Juan 28-6 Unit #210M  
Multi-Point Surface Use Plan

1. Existing Roads - Refer to Map No. 1. Existing roads used to access the proposed location will be properly maintained for the duration of the project. Bureau of Land Management right-of-way has been applied for as shown on Map No. 1.
2. Planned Access Road - Refer to Map No. 1 - None required.
3. Location of Existing Wells - Refer to Map No. 1A.
4. Location of Existing and/or Proposed Facilities if Well is Productive -
  - a. On the Well Pad - Refer to Plat No. 1, anticipated production facilities plat.
  - b. Off the Well Pad - Anticipated pipeline facilities as shown on the attached plat from El Paso Field Service.
5. Location and Type of Water Supply - Water will be hauled by truck for the proposed project and will be obtained from San Juan 28-6 Water Well located SW/4 Section 23, T-28-N, R-6-W, New Mexico
6. Source of Construction Materials - If construction materials are required for the proposed project, such materials will be obtained from a commercial quarry.
7. Methods of Handling Waste Materials - All garbage and trash materials will be removed from the site for proper disposal. A portable toilet will be provided for human waste and serviced in a proper manner. If liquids are left in the reserve pit after completion of the project, the pit will be fenced until the liquids have had adequate time to dry. The location clean-up will not take place until such time as the reserve pit can be properly covered over to prevent run-off from carrying waste materials into the watershed. Reserve pits will be lined as needed with either 12 mil bio-degradable plastic liner or a bentonite liner. All earthen pits will be so constructed as to prevent leakage from occurring; no earthen pit will be located on natural drainage. Generation of hazardous waste is not anticipated. Federal regulations will be adhered to regarding handling and disposal of such waste if so generated.
8. Ancillary Facilities - None anticipated.
9. Wellsite Layout - Refer to the location diagram and to the wellsite cut and fill diagram (Figure No. 4). The blow pit will be constructed with a 2'/160' grade to allow positive drainage to the reserve pit and prevent standing liquids in the blow pit.

10. Plans for Restoration of the Surface - After completion of the proposed project, the location will be cleaned and leveled. The location will be left in such a condition that will enable reseeding operations to be carried out. Seed mixture as designated by the responsible government agency will be used. The reseeding operations will be performed during the time period set forth by the responsible government agency. The permanent location facilities will be painted as designated by the responsible government agency.
11. Surface Ownership - Bureau of Land Management
12. Other Information - Environmental stipulations as outlined by the responsible government agency will be adhered to. Refer to the archaeological report for a description of the topography, flora, fauna, soil characteristics, dwellings, historical and cultural sites.
13. Operator's Representative and Certification - Burlington Resources Oil & Gas Company Regional Drilling Manager, Post Office Box 4289, Farmington, NM 87499, telephone (505) 326-9700. I hereby certify that I, or persons under my direct supervision, have inspected the proposed drill site and access route; that I am familiar with the conditions which presently exist; that the statements made in this plan, are to the best of my knowledge, true and correct; and that the work associated with the operations proposed herein will be performed by Burlington Resources Oil and Gas Company and its contractors and subcontractors in conformity with this plan and the terms and conditions under which it is approved.

 7-11-97  
Regulatory/Compliance Administrator Date



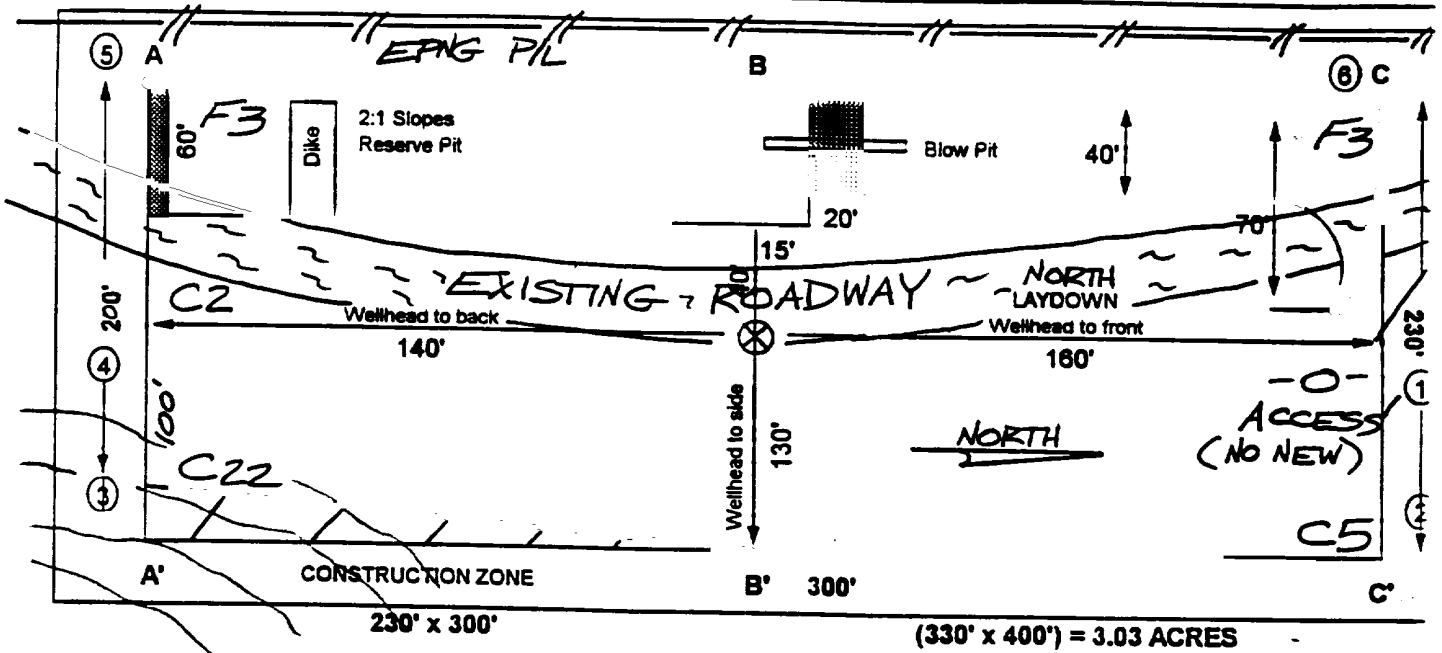


MERIDIAN OIL INC.  
 Pipeline Map  
 T-28-N, R-06-W  
 San Juan County, New Mexico  
 San Juan 28-6 Unit #210M  
 Map 1A

# BURLINGTON RESOURCES

PLAT #1

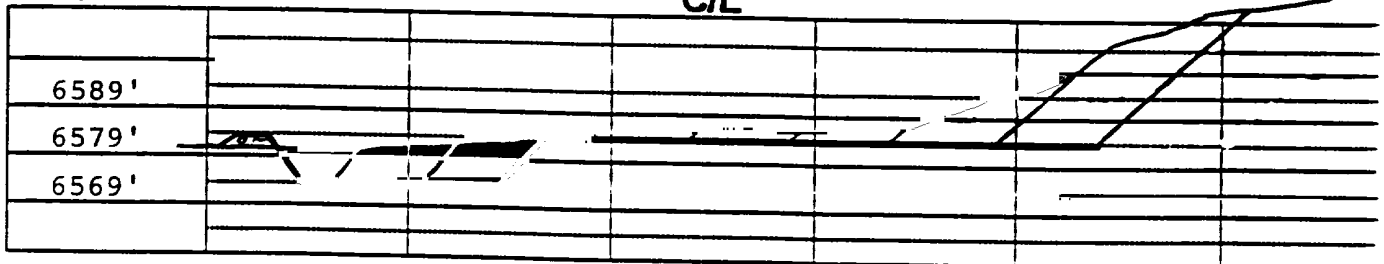
NAME: San Juan 28-6 Unit #210M  
 FOOTAGE: 1685' FNL, 900' FWL,  
 SEC 31 TWN 28N N.R. 6W W NMPM  
 CO: Rio Arriba ST: New Mexico  
 ELEVATION: 6579' DATE: 6/10/97



Reserve Pit Dike: to be 5' above Deep side (overflow - 3' wide and 1' above shallow side).  
 Blow Pit: overflow pipe halfway between top and bottom and to extend over plastic liner and into blow pit.

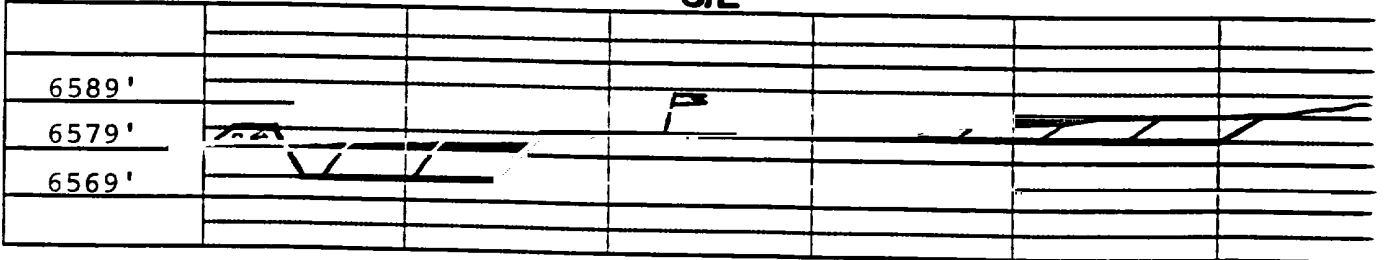
A - A'

C/L



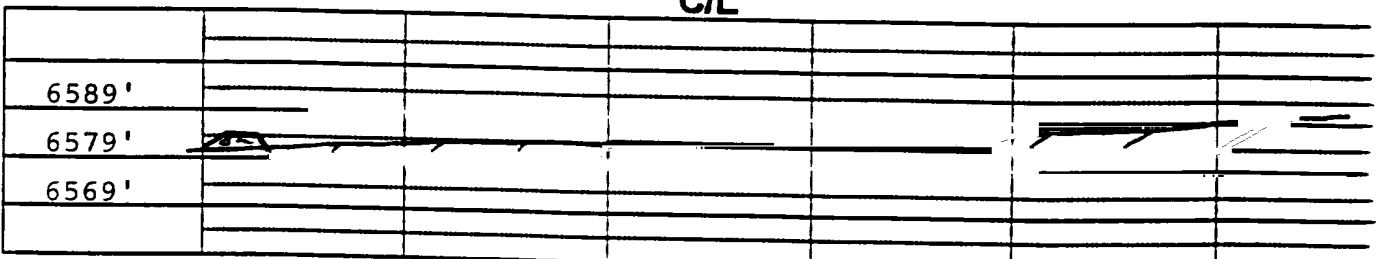
B - B'

C/L



C - C'

C/L



Note: Contractor should call One-Call for location of any marked or unmarked buried pipelines or ca: on well pad and/or access road at least two (2) working days prior to construction.

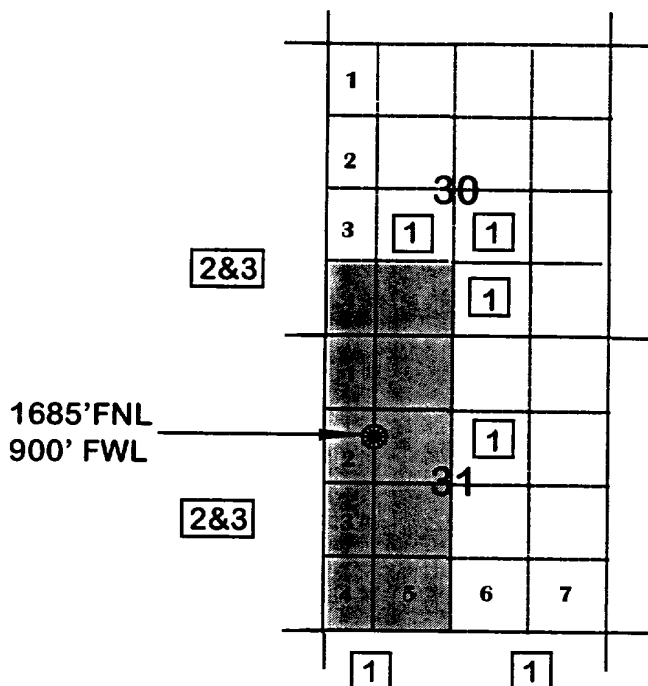
# **SAN JUAN 28-6 UNIT #210M**

**OFFSET OPERATOR \ OWNER PLAT  
NONSTANDARD LOCATION**

**Mesaverde / Dakota Formations Well**

**Mesaverde (W/2) / Dakota (Nonstandard dedication covering  
S/2SW/4 Sec. 30, W/2 Sec. 31)**

**Township 28 North, Range 6 West**



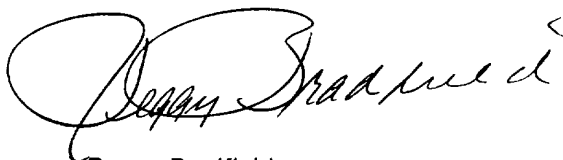
- 1) Burlington Resources Oil and Gas Company.
- 2) Amoco Production Company  
Bruce Zimney  
1670 Broadway  
P. O. Box 800  
Denver, Colorado 80201
- 3) Conoco  
10 Desta Drive, Suite 100W  
Midland, Texas 79705-4500

Re: San Juan 28-6 Unit #210M  
1685'FNL, 900'FWL, Section 31, T-28-N, R-6-W, Rio Arriba County  
API # 30-039-not yet assigned

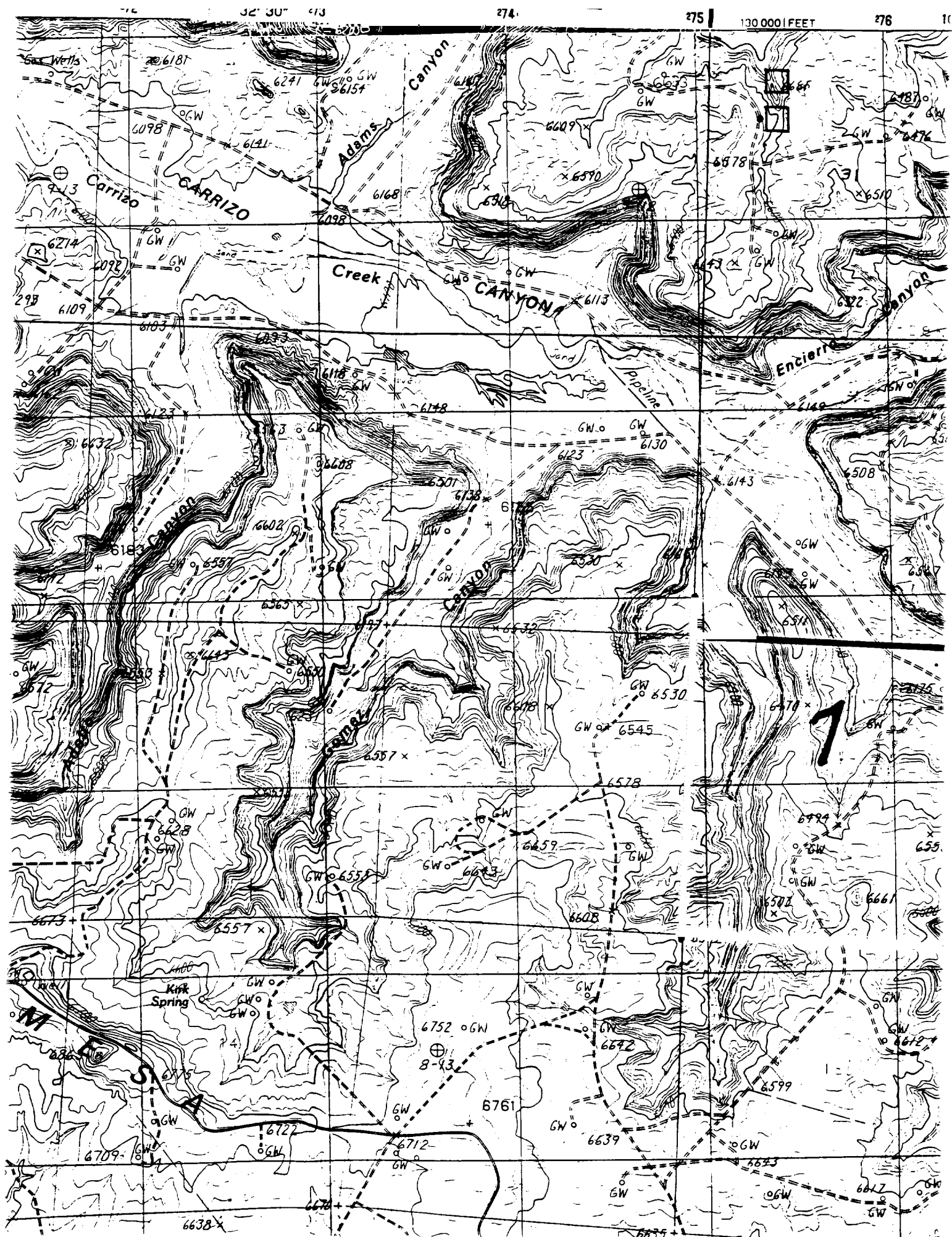
I hereby certify that the following offset operators/owners have been mailed notification of our application for non-standard location to drill the referenced well.

Amoco Production  
Att: Bruce Zimney  
PO Box 800  
Denver, CO 80201

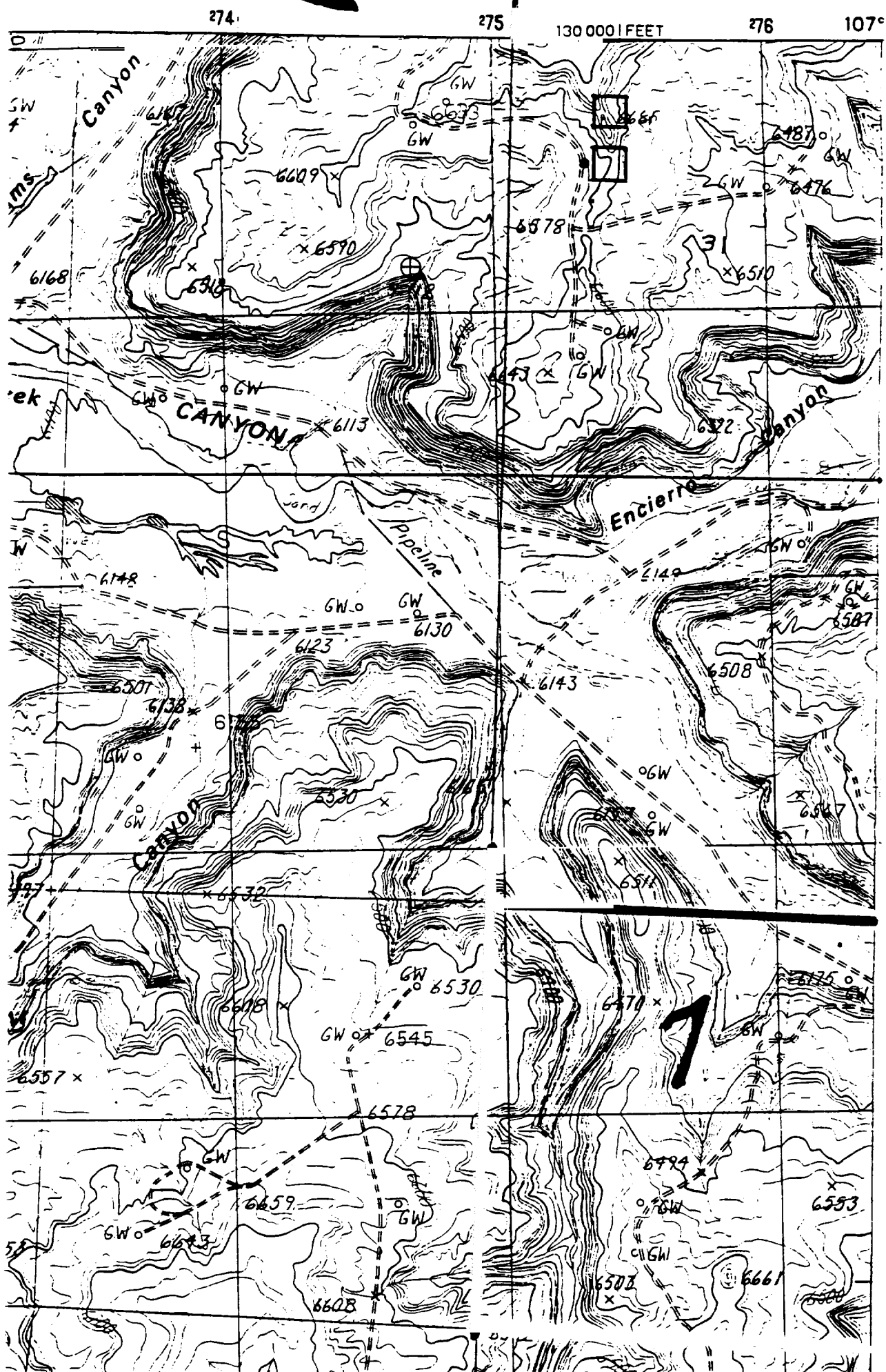
Conoco Inc.  
10 Desta Drive, Suite 100W  
Midland, TX 79705-4500

A handwritten signature in black ink, appearing to read "Peggy Bradfield". The signature is fluid and cursive, with a large loop at the beginning and a small mark at the end.

Peggy Bradfield  
Regulatory/Compliance Administrator







BEFORE THE OIL CONSERVATION COMMISSION  
OF THE STATE OF NEW MEXICO

IN THE MATTER OF THE HEARING  
CALLED BY THE OIL CONSERVATION  
COMMISSION OF NEW MEXICO FOR  
THE PURPOSE OF CONSIDERING:

CASE No. 4042

Order No. R-2948-A

APPLICATION OF EL PASO NATURAL GAS  
COMPANY FOR AN AMENDMENT TO ORDER  
NO. R-2948, RIO ARRIBA COUNTY, NEW  
MEXICO.

ORDER OF THE COMMISSION

BY THE COMMISSION:

This cause came on for hearing at 9 a.m. on February 5, 1969, at Santa Fe, New Mexico, before Examiner Daniel S. Nutter.

NOW, on this 11th day of February, 1969, the Commission, a quorum being present, having considered the testimony, the record, and the recommendations of the Examiner, and being fully advised in the premises,

FINDS:

(1) That due public notice having been given as required by law, the Commission has jurisdiction of this cause and the subject matter thereof.

(2) That by Order No. R-2948, dated August 16, 1965, the Commission approved several non-standard gas proration units in the Basin-Dakota Gas Pool, Rio Arriba County, New Mexico, among them the following:

TOWNSHIP 28 NORTH, RANGE 6 WEST, NMPM

Unit	Acres	Description
12	325.59	Section 33: W/2
13	325.02	Section 33: E/2

CASE No. 4042

Order No. R-2948-A

to produce its just and equitable share of the gas in the Basin-Dakota Gas Pool and will otherwise prevent waste and protect correlative rights.

IT IS THEREFORE ORDERED:

(1) That Order No. R-2948, dated August 16, 1965, is hereby amended by deleting therefrom the following-described non-standard gas proration units in the Basin-Dakota Gas Pool, Rio Arriba County, New Mexico:

TOWNSHIP 28 NORTH, RANGE 6 WEST, NMPM

Unit	Acres	Description
12	325.59	Section 33: W/2
13	325.02	Section 33: E/2

TOWNSHIP 28 NORTH, RANGE 7 WEST, NMPM

Unit	Acres	Description
16	324.70	Section 35: W/2
17	327.70	Section 35: E/2

and substituting in lieu thereof the following-described gas proration units:

TOWNSHIP 28 NORTH, RANGE 6 WEST, NMPM

Unit	Acres	Description
12	320	Section 33: N/2
13	330.71	Section 33: S/2

TOWNSHIP 28 NORTH, RANGE 7 WEST, NMPM

Unit	Acres	Description
16	320	Section 35: N/2
17	332.40	Section 35: S/2

BEFORE THE OIL CONSERVATION COMMISSION  
OF THE STATE OF NEW MEXICO

IN THE MATTER OF THE HEARING  
CALLED BY THE OIL CONSERVATION  
COMMISSION OF NEW MEXICO FOR  
THE PURPOSE OF CONSIDERING:

CASE No. 3272  
Order No. R-2948

APPLICATION OF EL PASO NATURAL GAS  
COMPANY FOR NON-STANDARD GAS PRORA-  
TION UNITS, BASIN-DAKOTA GAS POOL,  
RIO ARRIBA COUNTY, NEW MEXICO.

ORDER OF THE COMMISSION

BY THE COMMISSION:

This cause came on for hearing at 9 o'clock a.m. on June 30, 1965, at Santa Fe, New Mexico, before Examiner Daniel S. Nutter.

NOW, on this 16th day of August, 1965, the Commission, a quorum being present, having considered the testimony, the record, and the recommendations of the Examiner, and being fully advised in the premises,

FINDS:

(1) That due public notice having been given as required by law, the Commission has jurisdiction of this cause and the subject matter thereof.

(2) That the applicant, El Paso Natural Gas Company, seeks approval of 51 non-standard gas proration units in the Basin-Dakota Gas Pool, Rio Arriba County, New Mexico, in the following area:

TOWNSHIP 28 NORTH, RANGE 5 WEST, NMMP  
Sections 7 through 13, 24 and 25, and  
33 through 36

TOWNSHIP 28 NORTH, RANGE 6 WEST, NMMP  
Sections 7 through 12, 18 and 19, and  
30 through 34

TOWNSHIP 28 NORTH, RANGE 7 WEST, NMMP  
Sections 7 through 12, 18 and 19, and  
30 through 36

TOWNSHIP 28 NORTH, RANGE 5 WEST, NMPM (CONT.)

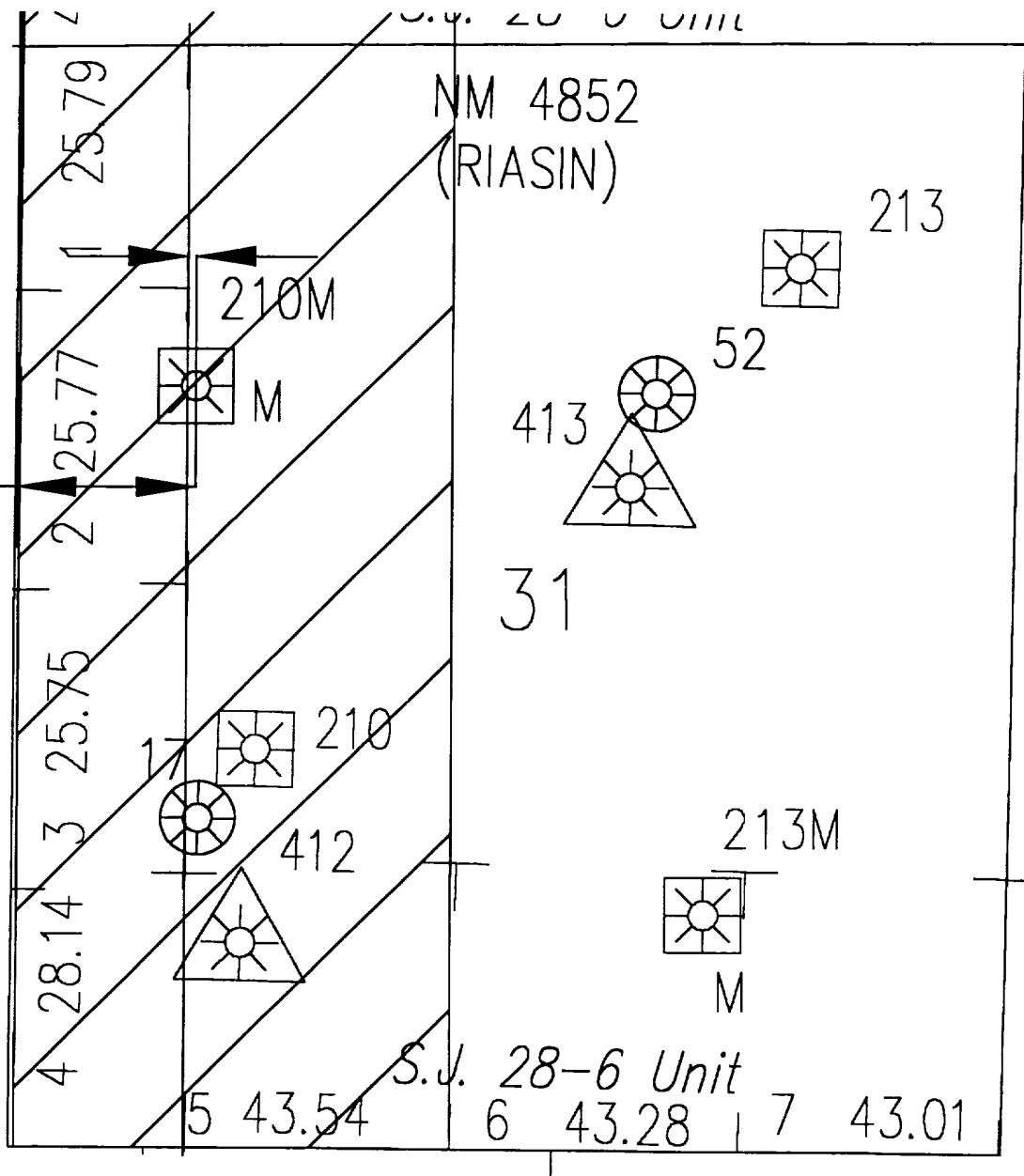
Unit	Acres	Description
5	310.19	Section 11: Lots 1, 2, and 3 and SE/4 SE/4. Section 12: Lots 3 and 4, S/2 SW/4, and SW/4 SE/4
6.	342.30	Section 12: Lots 1, 2, and 5 Section 13: Lots 1 and 2, W/2 NE/4, and NW/4 SE/4
7	327.36	Section 13: Lots 3 and 4 and SW/4 SE/4 Section 24: Lots 1 and 2 and W/2 NE/4
8	329.09	Section 24: Lots 3 and 4 and W/2 SE/4 Section 25: Lots 1 and 2 and NW/4 NE/4
9	316.76	Section 25: Lots 3 and 4, SW/4 NE/4 and W/2 SE/4 Section 36: Lot 1 and NW/4 NE/4
10	330.74	Section 36: Lots 2, 3, 5, 6, 7, and 8 and NW/4 SE/4
11	345.39	Section 36: Lot 4, NE/4 NW/4, S/2 NW/4, SW/4 NE/4, and N/2 SW/4 Section 35: Lot 1
12	330.92	Section 36: NW/4 NW/4 Section 35: Lot 2, NE/4, and N/2 SE/4
13	345.82	Section 35: Lots 3 and 4, NE/4 NW/4, S/2 NW/4, and N/2 SW/4 Section 34: Lot 1
14	326.42	Section 35: NW/4 NW/4 Section 34: Lot 2, NE/4, and N/2 SE/4
15	329.70	Section 34: W/2
16	325.46	Section 33: E/2

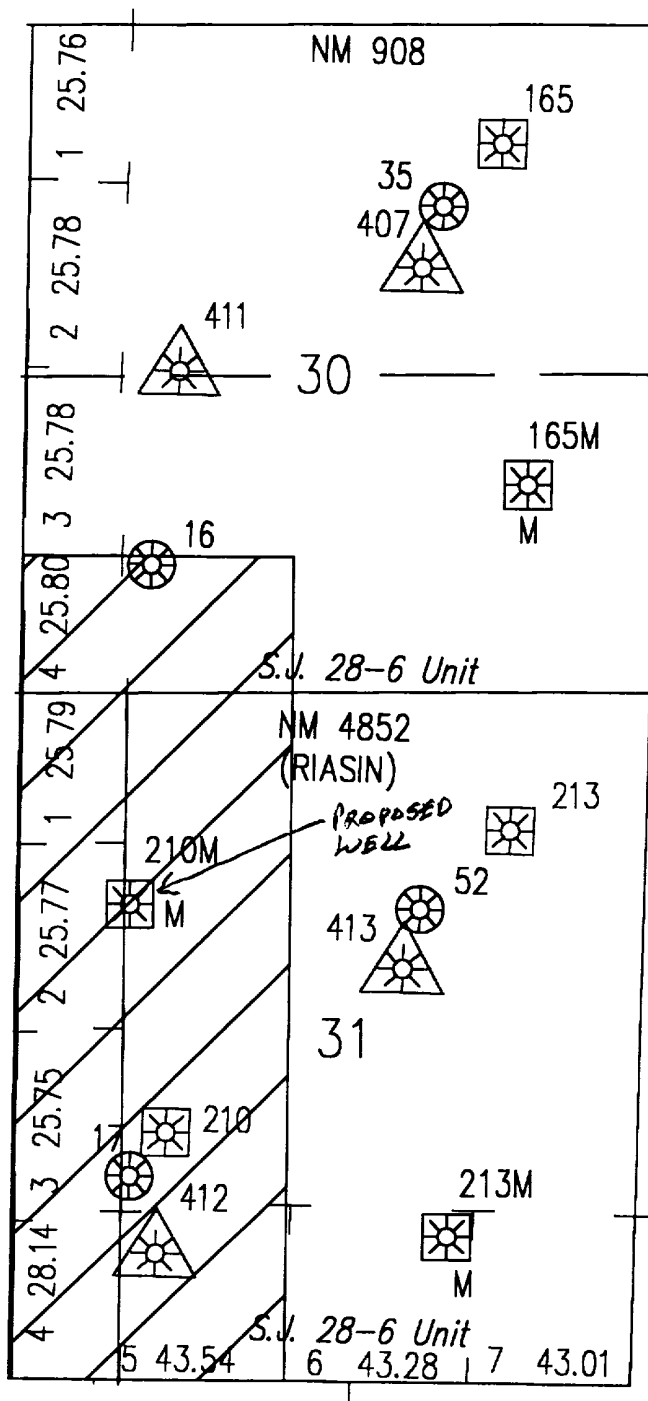
TOWNSHIP 28 NORTH, RANGE 7 WEST, NMPM

Unit	Acres	Description
1	321.22	Section 12: Lots 1, 2, 3, and 4 and S/2 S/2 Section 11: Lot 1
2	333.76	Section 11: Lots 2, 3, and 4 and S/2 S/2 Section 10: Lot 1 and SE/4 SE/4
3	331.55	Section 10: Lots 2, 3, and 4, S/2 SW/4, and SW/4 SE/4 Section 9: Lots 1 and 2 and SE/4 SE/4
4	338.02	Section 9: Lots 3 and 4, S/2 SW/4, and SW/4 SE/4 Section 8: Lots 1, 2, and 3 and SE/4 SE/4
5	313.00	Section 8: Lot 4, S/2 SW/4, and SW/4 SE/4 Section 7: Lot 1, SE/4 SW/4, and S/2 SE/4
6	331.11	Section 7: Lots 2, 3, 4, and 5 Section 18: Lots 1, 2, and 3 and E/2 NW/4
7	345.30	Section 18: Lot 4 and E/2 SW/4 Section 19: Lots 1, 2, and 3, E/2 NW/4, and NE/4 SW/4
8	342.17	Section 19: Lot 4 and SE/4 SW/4 Section 30: Lots 1, 2, 3, and 4, E/2 NW/4, and NE/4 SW/4
9	316.50	Section 30: SE/4 SW/4 Section 31: Lot 1, E/2 NW/4, and NE/4
10	339.73	Section 31: Lots 2, 3, 4, 5, 6, and 7, NE/4 SW/4, and N/2 SW/4
11	315.36	Section 32: W/2
12	315.68	Section 32: E/2
13	316.00	Section 33: W/2
14	316.32	Section 33: E/2

50.43'

900'





## SAN JUAN UNIT # 210M

- |  |                 |  |           |
|--|-----------------|--|-----------|
|  | FRUITLAND SAND  |  | MESAVERDE |
|  | FRUITLAND COAL  |  | DAKOTA    |
|  | PICTURED CLIFFS |  | GALLUP    |



R6W

T  
28  
N

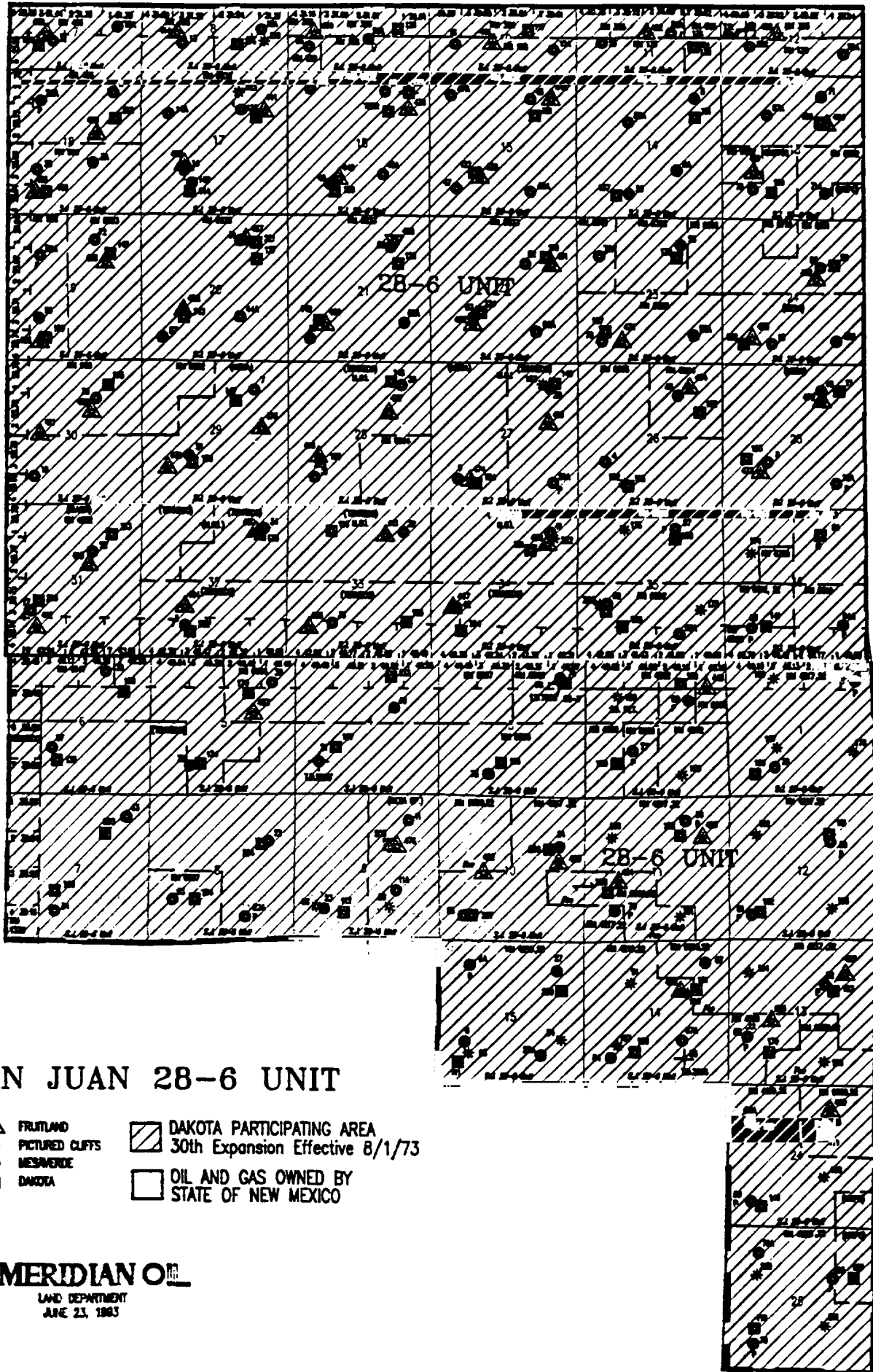
T  
27  
N

# SAN JUAN 28-6 UNIT

- ▲ FRUITLAND
- \* PICTURED CLIFFS
- MESQUITE
- DAKOTA
- ▨ DAKOTA PARTICIPATING AREA  
30th Expansion Effective 8/1/73
- OIL AND GAS OWNED BY  
STATE OF NEW MEXICO

**MERIDIAN OIL**

LAND DEPARTMENT  
JUNE 23, 1983



R6W

T  
28  
N

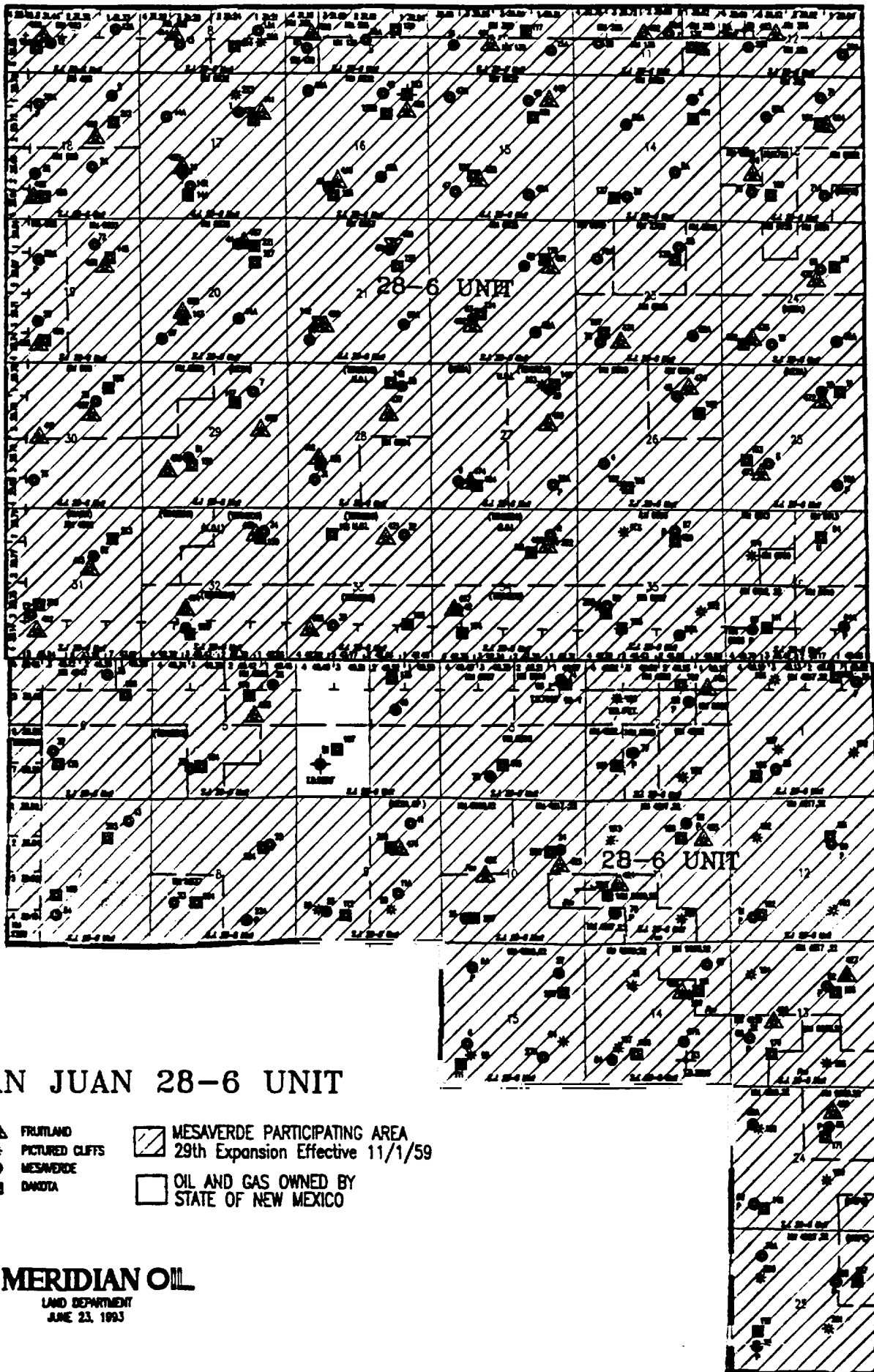
T  
27  
N

# SAN JUAN 28-6 UNIT

- ▲ FRUITLAND
- \* PICTURED CLIFFS
- MESAVERDE
- DAKOTA
- ▨ MESAVERDE PARTICIPATING AREA  
29th Expansion Effective 11/1/59
- OIL AND GAS OWNED BY  
STATE OF NEW MEXICO

**MERIDIAN OIL**

LAND DEPARTMENT  
JUNE 23, 1993





NEW MEXICO ENERGY, MINERALS  
& NATURAL RESOURCES DEPARTMENT

OIL CONSERVATION DIVISION  
2040 South Pacheco Street  
Santa Fe, New Mexico 87505  
(505) 827-7131

**ADMINISTRATIVE ORDER DHC-1692**

Burlington Resources Oil & Gas Company  
P.O. Box 4289  
Farmington, New Mexico 87499-4289

Attention: Ms. Peggy Bradfield

San Juan 28-6 Unit No.210M  
API No.-N/A  
*Unit D, Section 31, Township 28 North, Range 6 West, NMPM,  
Rio Arriba County, New Mexico.  
Basin-Dakota (Prorated Gas - 71599) and  
Blanco-Mesaverde (Prorated Gas - 72319) Pools*

Dear Ms. Bradfield:

Reference is made to your recent application for an exception to Rule 303.A. of the Division Rules and Regulations to permit the above described well to commingle production from the subject pools in the wellbore.

It appearing that the subject well qualifies for approval for such exception pursuant to the provisions of Rule 303.C., and that reservoir damage or waste will not result from such downhole commingling, and correlative rights will not be violated thereby, you are hereby authorized to commingle the production as described above and any Division Order which authorized the dual completion and required separation of the zones is hereby placed in abeyance.

The maximum amount of gas which may be produced daily from the well shall be determined by Division Rules and Regulations or by the gas allowable for each respective prorated pool as printed in the Division's San Juan Basin Gas Proration Schedule.

The applicant shall consult with the supervisor of the Aztec District Office of the Division upon completion and testing of the well in order to establish a fixed allocation of production from each of the commingled zones. Upon approval by the Division's District Office, the applicant shall submit the allocation formula to the Santa Fe Office of the Division.

REMARKS: The operator shall notify the Aztec District Office of the Division upon implementation of the commingling process.

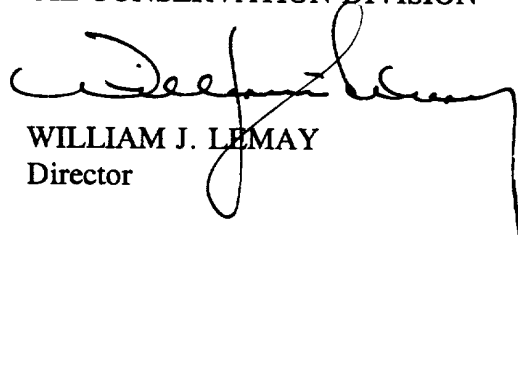
*Administrative Order DHC-1692*  
*Burlington Resources Oil & Gas Company*  
*October 6, 1997*  
*Page 2*

---

Pursuant to Rule 303.H., the commingling authority granted herein may be rescinded by the Division Director if, in his opinion, conservation is not being best served by such commingling.

Approved at Santa Fe, New Mexico on this 6th day of October, 1997.

STATE OF NEW MEXICO  
OIL CONSERVATION DIVISION

A handwritten signature in black ink, appearing to read 'William J. Lemay', is written over the printed name and title. The signature is fluid and cursive, with a long vertical line extending downwards from the end of the signature.

WILLIAM J. LEMAY  
Director

S E A L

WJL/DRC

cc: Oil Conservation Division - Aztec  
Bureau of Land Management-Farmington