


UNITED STATES
DEPARTMENT OF THE INTERIOR
BUREAU OF LAND MANAGEMENT

APPLICATION FOR PERMIT TO DRILL, DEEPEN, OR PLUG BACK

1a. Type of Work DRILL	5. Lease Number SF-079250 Unit Reporting Number
1b. Type of Well GAS	6. If Indian, All. or Tribe
2. Operator BURLINGTON RESOURCES 14538 Oil & Gas Company	7. Unit Agreement Name San Juan 28-5 Unit 7400
3. Address & Phone No. of Operator PO Box 4289, Farmington, NM 87499 (505) 326-9700	8. Farm or Lease Name San Juan 28-5 Unit 9. Well Number 101M
4. Location of Well 920' FNL, 25' FWL Latitude 36° 40.0, Longitude 107° 19.3	10. Field, Pool, Wildcat 72317 Blanco MV/Basin Dk 71594 11. Sec., Twn, Rge, Mer. (NMPM) Sec 13, T-28-N, R-5-W API # 30-039-25908
14. Distance in Miles from Nearest Town 6 miles to Gobernador	12. County RA 13. State NM
15. Distance from Proposed Location to Nearest Property or Lease Line 25'	
16. Acres in Lease	17. Acres Assigned to Well 320 Dk; 343.07 MV
18. Distance from Proposed Location to Nearest Well, Drlg, Compl, or Applied for on this Lease 1200'	
19. Proposed Depth 8819'	20. Rotary or Cable Tools Rotary
21. Elevations (DF, FT, GR, Etc.) 7390' GR	22. Approx. Date Work will Start
23. Proposed Casing and Cementing Program See Operations Plan attached	DRILLING OPERATIONS AUTHORIZED ARE SUBJECT TO COMPLIANCE WITH ATTACHED "GENERAL REQUIREMENTS"
24. Authorized by:  Regulatory/Compliance Administrator	5-9-98 Date

PERMIT NO. _____ APPROVAL DATE JUL 10 1998

APPROVED BY _____ TITLE _____ DATE 7/10/98

Archaeological Report to be submitted
Threatened and Endangered Species Report to be submitted
NOTE: This format is issued in lieu of U.S. BLM Form 3160-3
Title 18 U.S.C. Section 1001, makes it a crime for any person knowingly and willfully to make to any department or agency of the United States any false, fictitious or fraudulent statements or presentations as to any matter within its jurisdiction.

N 24-4065

NMOC

District I
PO Box 1930, Hobbs, NM 88241-1930

State of New Mexico
Energy, Minerals & Natural Resources Department

Form
Revised February 21
Instructions C

District II
PO Drawer 22, Artesia, NM 88211-0219

OIL CONSERVATION DIVISION
PO Box 2088
Santa Fe, NM 87504-2088

Submit to Appropriate District
State Lease - 4
Fee Lease - 3

District III
1000 Rio Brazos Rd., Aztec, NM 87410

District IV
PO Box 2088, Santa Fe, NM 87504-2088

AMENDED REF

WELL LOCATION AND ACREAGE DEDICATION PLAT

*API Number 30-039-25908		*Pool Code 72319/71599	*Pool Name Blanco Mesaverde/Basin Dakota
*Property Code 7460	*Property Name SAN JUAN 28-5 UNIT		*Well Number 101M
*GRID No. 14538	*Operator Name BURLINGTON RESOURCES OIL & GAS COMPANY		*Elevation 7390'

¹⁰ Surface Location

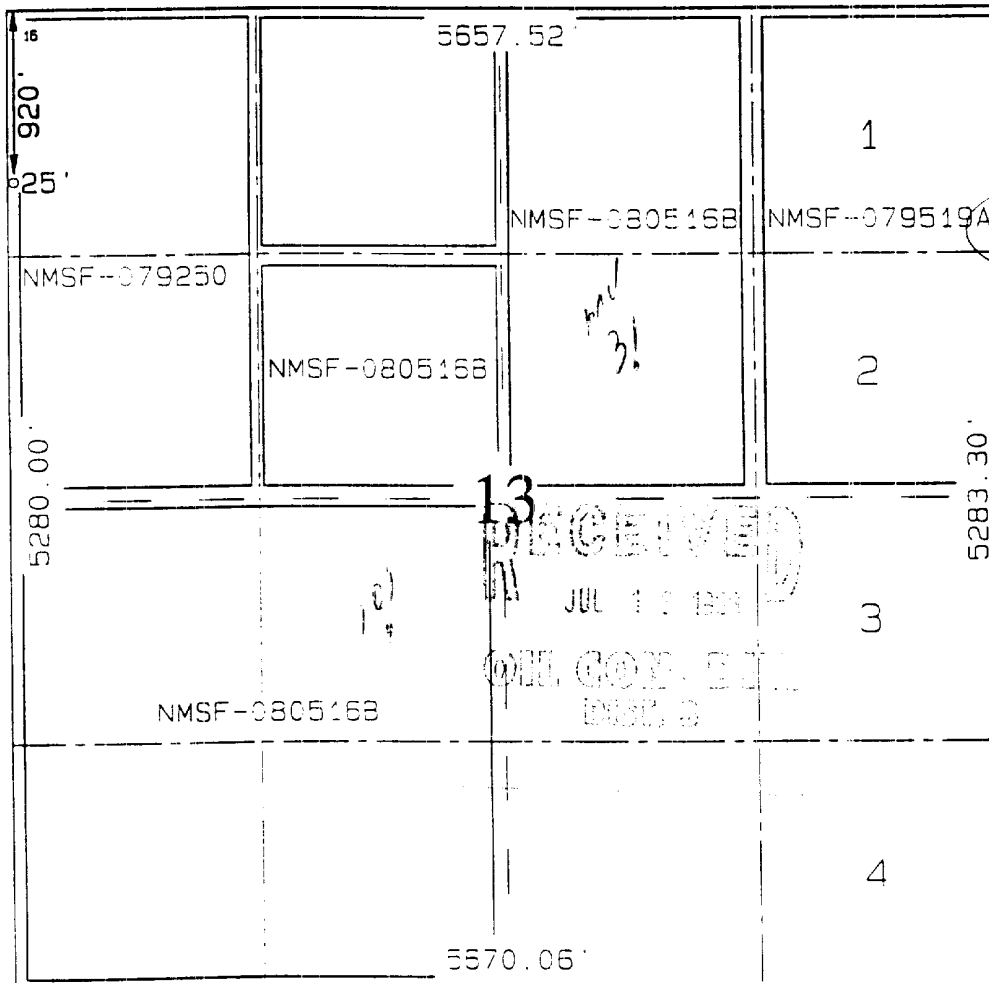
UL or lot no.	Section	Township	Range	Lot Idn	Feet from the	North/South line	Feet from the	East/West line	Corner
D	13	28N	5W		920	NORTH	25	WEST	RI ARR

¹¹ Bottom Hole Location If Different From Surface

UL or lot no.	Section	Township	Range	Lot Idn	Feet from the	North/South line	Feet from the	East/West line	Corner

¹² Dedicated Acres MV-N/343.07 DK-W/320	¹³ Joint or Infill	¹⁴ Consolidation Code	¹⁵ Order No.
--	-------------------------------	----------------------------------	-------------------------

NO ALLOWABLE WILL BE ASSIGNED TO THIS COMPLETION UNTIL ALL INTERESTS HAVE BEEN CONSOLIDATED OR A NON-STANDARD UNIT HAS BEEN APPROVED BY THE DIVISION



¹⁷ OPERATOR CERTIFICATE
I hereby certify that the information contained is true and complete to the best of my knowledge and belief.

Peggy Bradfield
Signature
Peggy Bradfield
Printed Name
Regulatory Administrator
Title
5-9-98
Date

¹⁸ SURVEYOR CERTIFICATE
I hereby certify that the well location shown on this plat was plotted from field notes of actual surveys made or under my supervision and that the same is true and correct to the best of my belief.

FEBRUARY 18, 1998
Date of Survey

Signature and Seal of Professional Surveyor
Neale C. Edwards
NEALE C. EDWARDS
NEW MEXICO
6857
PROFESSIONAL SURVEYOR

OPERATIONS PLAN

Well Name: San Juan 28-5 Unit #101M
Location: 920'FNL, 25'FWL Sec 13, T-28-N, R-5-W
Rio Arriba County, NM
Latitude 36° 40.0, Longitude 107° 19.3
Formation: Blanco Mesa Verde/Basin Dakota
Elevation: 7390'GL

<u>Formation Tops:</u>	<u>Top</u>	<u>Bottom</u>	<u>Contents</u>
Surface	San Jose	3656'	
Ojo Alamo	3656'	3848'	aquifer
Kirtland	3848'	3934'	
Fruitland	3934'	4372'	gas
Pictured Cliffs	4372'	4453'	gas
Lewis	4453'	5073'	gas
Intermediate TD	4553'		
Huerfanito Bentonite	5073'	5346'	gas
Chacra	5346'	6177'	
Massive Cliff House	6177'	6227'	gas
Menefee	6227'	6525'	gas
Massive Point Lookout	6525'	7013'	gas
Mancos Shale	7013'	7750'	
Gallup	7750'	8499'	gas
Greenhorn	8499'	8649'	gas
Dakota	8649'		gas
TD (4 1/2"liner)	8819'		

Logging Program:

Cased hole - CBL - TD to 200' above TOC, GR/CNL across MV/Dk

Mud Program:

<u>Interval</u>	<u>Type</u>	<u>Weight</u>	<u>Vis.</u>	<u>Fluid Loss</u>
0- 200'	Spud	8.4-9.0	40-50	no control
200-4553'	LSND	8.4-9.0	30-60	no control
4553-8819'	Gas/Air	n/a	n/a	n/a

Pit levels will be visually monitored to detect gain or loss of fluid control.

Casing Program (as listed, the equivalent, or better):

<u>Hole Size</u>	<u>Depth Interval</u>	<u>Csq. Size</u>	<u>Wt.</u>	<u>Grade</u>
12 1/4"	0' - 200'	9 5/8"	32.3#	WC-50
8 3/4"	0' - 4553'	7"	20.0#	J-55
6 1/4"	4453' - 8819'	4 1/2"	10.5#	K-55

Tubing Program:

0' - 8819' 2 3/8" 4.70# EUE

BURLINGTON RESOURCES OIL & GAS COMPANY SAN JUAN 28-5 UNIT #101M

920' FNL & 25' FWL, SECTION 13, T28N, R5W, N.M.P.M.
RIO ARRIBA COUNTY, NEW MEXICO

APD MAP #1

400' NEW BLM CONSTRUCTION
NE/NE SECT ON 14, T28N, R5W

