



NEW MEXICO ENERGY, MINERALS
& NATURAL RESOURCES DEPARTMENT

OIL CONSERVATION DIVISION
2040 South Pacheco Street
Santa Fe, New Mexico 87505
(505) 827-7131

June 1, 1998

Burlington Resources Oil & Gas Company
P.O. Box 4289
Farmington, New Mexico 87499-4289
Attention: Peggy Bradfield

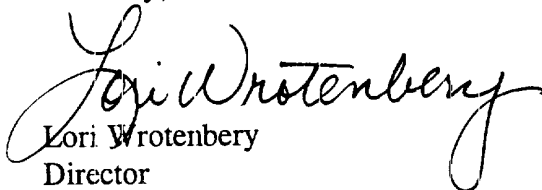
Administrative Order NSL-4046

Dear Ms. Bradfield:

Reference is made to your application dated May 9, 1998 for Burlington Resources Oil and Gas Company to drill its San Juan "28-5" Unit Well No. 107 at an unorthodox gas well location within the Blanco-Mesaverde Pool 1600 feet from the South line and 255 feet from the West line (Lot 4/Unit L) of irregular Section 12, Township 28 North, Range 5 West, NMPM, Rio Arriba County, New Mexico. All of said Section 12 is to be dedicated to said well in order to form a standard 299.04-acre gas spacing and proration unit for said pool.

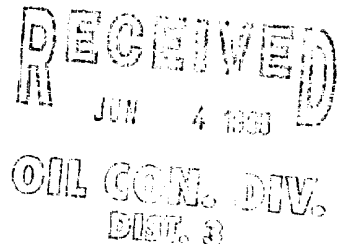
By the authority granted me under the provisions of Rule 2(d) of the "*General Rules for the Prorated Gas Pools of New Mexico/Special Rules and Regulations for the Blanco-Mesaverde Pool*," as promulgated by Division Order No. R-8170, as amended, the above-described unorthodox gas well location is hereby approved.

Sincerely,


Lori Wrotenberg
Director

LW/MES/kv

cc: New Mexico Oil Conservation Division - Aztec /
U.S. Bureau of Land Management - Farmington



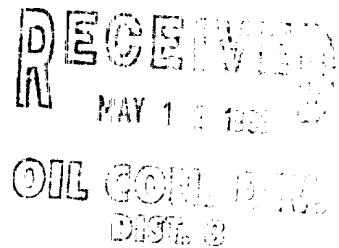
BURLINGTON RESOURCES

SAN JUAN DIVISION

May 9, 1998

Sent Federal Express

Ms. Lori Wrotenbery, Director
New Mexico Oil Conservation Division
2040 South Pacheco
Santa Fe, New Mexico 87505



Re: San Juan 28-5 Unit #107
1600'FSL, 255'FWL, Section 12, T-28-N, R-5-W, Rio Arriba County, NM
30-039-not assigned

Dear Ms. Wrotenbery:

Burlington Resources is applying for administrative approval of an unorthodox gas well location for the Blanco Mesa Verde pool. This application for the referenced location is for topographic and archaeological reasons and to minimize surface disturbance by twinning the location of the San Juan 28-5 Unit #242 Fruitland Coal well (30-039-25397) located at 1575'FSL, 215'FWL of Section 12.

Production from the Blanco Mesa Verde pool is to be included in a 299.04 acre gas spacing and proration unit comprising all of Section 12.

The following attachments are for your review:

1. Application for Permit to Drill.
2. Completed C-102 at referenced location.
3. Offset operators/owners plat.
4. 7.5 minute topographic map, and enlargement of the map to define topographic features.

Three copies of this application are being submitted to all offset owners/ operators by certified mail with a request that they furnish you with a Waiver of Objection, return one copy to this office, and retain one copy for their file.

We appreciate your earliest consideration of this application.

Sincerely,



Peggy Bradfield
Regulatory/Compliance Administrator

xc: NMOC - Aztec District Office
Bureau of Land Management - Farmington District Office


WAIVER

Phillips Petroleum hereby waives objection to Burlington Resources' application for a non-standard location for their San Juan 28-5 Unit #107 as proposed above.

By: _____ Date: _____

UNITED STATES
DEPARTMENT OF THE INTERIOR
BUREAU OF LAND MANAGEMENT

APPLICATION FOR PERMIT TO DRILL, DEEPEN, OR PLUG BACK

1a.	Type of Work DRILL	5.	Lease Number SF-079250 Unit Reporting Number
1b.	Type of Well GAS	6.	If Indian, All. or Tribe
2.	Operator BURLINGTON RESOURCES Oil & Gas Company	7.	Unit Agreement Name San Juan 28-5 Unit
3.	Address & Phone No. of Operator PO Box 4289, Farmington, NM 87499 (505) 326-9700	8.	Farm or Lease Name San Juan 28-5 Unit
		9.	Well Number 107
4.	Location of Well 1600' FSL, 255' FWL Latitude 36° 40.4, Longitude 107° 19.1	10.	Field, Pool, Wildcat Blanco Mesa Verde
		11.	Sec., Twn, Rge, Mer. (NMPM) Sec 12, T-28-N, R-5-W
		API #	30-039-
14.	Distance in Miles from Nearest Town 4 miles to Gobernador	12.	County RA
		13.	State NM
15.	Distance from Proposed Location to Nearest Property or Lease Line 255'		
16.	Acres in Lease	17.	Acres Assigned to Well 299.04
18.	Distance from Proposed Location to Nearest Well, Drlg, Compl, or Applied for on this Lease 40'		
19.	Proposed Depth 6936	20.	Rotary or Cable Tools Rotary
21.	Elevations (DF, FT, GR, Etc.) 7398' GR	22.	Approx. Date Work will Start
23.	Proposed Casing and Cementing Program See Operations Plan attached		
24.	Authorized by:  Regulatory/Compliance Administrator		<u>4-17-98</u> Date

PERMIT NO. _____ APPROVAL DATE _____

APPROVED BY _____ TITLE _____ DATE _____

Archaeological Report -please use report for San Juan 28-5 Unit #242 - 1575' FSL, 215' FWL 12-28-5 dated 1994
Threatened and Endangered Species Report to be submitted

NOTE: This format is issued in lieu of U.S. BLM Form 3160-3

Title 13 U.S.C. Section 1001, makes it a crime for any person knowingly and willfully to make to any department or agency of the United States any false, fictitious or fraudulent statements or presentations as to any matter within its jurisdiction.

District I
PO Box 1980, Hobbs, NM 88241-1980

District II
PO Drawer 20, Artesia, NM 88211-0719

District III
1000 Rio Brazos Rd., Aztec, NM 87410

District IV
PO Box 2088, Santa Fe, NM 87504-2088

State of New Mexico
Energy, Minerals & Natural Resources Department

OIL CONSERVATION DIVISION
PO Box 2088
Santa Fe, NM 87504-2088

Form
Revised February 2

Instructions
Submit to Appropriate District
State Lease - 4
Fee Lease - 3

☐ AMENDED RE

WELL LOCATION AND ACREAGE DEDICATION PLAT

API Number 30-039-		Pool Code 72319	Pool Name Blanco Mesaverde
Property Code 7460	Property Name SAN JUAN 28-5 UNIT		Well Number 107
GRID No. 14533	Operator Name BURLINGTON RESOURCES OIL & GAS COMPANY		Elevation 7398

10 Surface Location

UL or lot no.	Section	Township	Range	Lot 101	Feet from the	North/South line	Feet from the	East/West line	C
L	12	23N	5W		1600	SOUTH	255	WEST	AR

11 Bottom Hole Location If Different From Surface

UL or lot no.	Section	Township	Range	Lot 101	Feet from the	North/South line	Feet from the	East/West line	C

Dedicated Acres A11 - 299.04	Unit or Infill	Consolidation Code	Order No.
---------------------------------	----------------	--------------------	-----------

NO ALLOWABLE WILL BE ASSIGNED TO THIS COMPLETION UNTIL ALL INTERESTS HAVE BEEN CONSOLIDATED OR A NON-STANDARD UNIT HAS BEEN APPROVED BY THE DIVISION

17 OPERATOR CERTIFICATION

I hereby certify that the information contained herein is true and complete to the best of my knowledge.

Peggy Bradfield
Signature
Peggy Bradfield
Printed Name
Regulatory Administrator
Title
4-17-98
Date

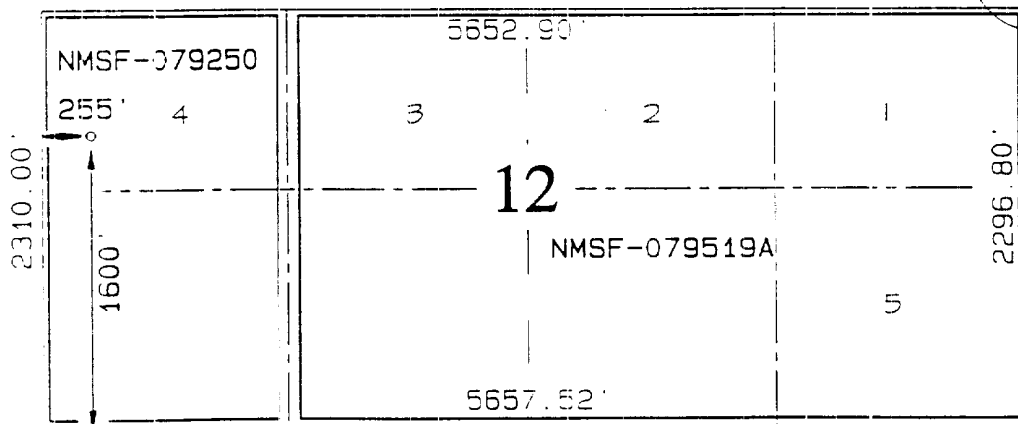
18 SURVEYOR CERTIFICATION

I hereby certify that the well location shown was plotted from field notes of actual surveys or under my supervision and that the same is correct to the best of my belief.

FEBRUARY 15, 1998

Date of Survey
Signature and Seal of Professional Surveyor

NEALE C. EDWARDS
NEW MEXICO
6857
6857
Certificate Number
PROFESSIONAL SURVEYOR



OPERATIONS PLAN

Well Name: San Juan 28-5 Unit #107
Location: 1600' FSL, 255' FWL Section 12, T-28-N, R-5-W
Rio Arriba County, New Mexico
Latitude 36° 40.4, Longitude 107° 19.1
Formation: Blanco Mesa Verde
Elevation: 7398' GL

<u>Formation Tops:</u>	<u>Top</u>	<u>Bottom</u>	<u>Contents</u>
Surface	San Jose	3655'	aquifer
Ojo Alamo	3655'	3855'	aquifer
Kirtland	3855'	3936'	
Fruitland	3936'	4378'	
Pictured Cliffs	4378'	4450'	gas
Lewis	4450'	5357'	gas
Intermediate TD	4550'		
Chacra	5357'	6206'	
Massive Cliff House	6206'	6242'	gas
Menefee	6242'	6536'	gas
Massive Point Lookout	6536'		gas
Total Depth	6936'		

Logging Program:

Cased hole logging - Gamma Ray Neutron
Coring/DST - none

Mud Program:

<u>Interval</u>	<u>Type</u>	<u>Weight</u>	<u>Vis.</u>	<u>Fluid Loss</u>
0- 200'	Spud	8.4-9.0	40-50	no control
200-4550'	LSND	8.4-9.0	30-60	no control
4550-6936'	Gas/Mist	n/a	n/a	n/a

Pit levels will be visually monitored to detect gain or loss of fluid control.

Casing Program (as listed, the equivalent, or better):

<u>Hole Size</u>	<u>Depth Interval</u>	<u>Csq. Size</u>	<u>Wt.</u>	<u>Grade</u>
12 1/4"	0' - 200'	9 5/8"	32.3#	H-40
8 3/4"	0' - 4550'	7"	20.0#	J-55
6 1/4"	4450' - 6936'	4 1/2"	10.5#	J-55

Tubing Program:

0' - 6936'	2 3/8"	4.7#	J-55
------------	--------	------	------

BOP Specifications, Wellhead and Tests:

Surface to Intermediate TD -

11" 2000 psi minimum double gate BOP stack (Reference Figure #1).
After nipple-up prior to drilling out surface casing, rams and casing will be tested to 600 psi for 30 minutes.

BOP Specifications, Wellhead and Tests (cont'd):**Intermediate TD to Total Depth -**

11" 2000 psi minimum double gate BOP stack (Reference Figure #1). After nipple-up prior to drilling out intermediate casing, rams and casing will be tested to 1500 psi for 30 minutes.

Surface to Total Depth -

2" nominal, 2000 psi minimum choke manifold (Reference Figure #3).

Completion Operations -

7 1/16" 2000 psi double gate BOP stack (Reference Figure #2). After nipple-up prior to completion, pipe rams, casing and liner top will be tested to 2000 psi for 15 minutes.

Wellhead -

9 5/8" x 7" x 2 3/8" x 2000 psi tree assembly.

General -

- Pipe rams will be actuated once each day and blind rams will be actuated once each trip to test proper functioning.
- An upper kelly cock valve with handle available and drill string valves to fit each drill string will be available on the rig floors at all times.
- BOP pit level drill will be conducted weekly for each drill crew.
- All BOP tests & drills will be recorded in daily drilling reports.
- Blind and pipe rams will be equipped with extension hand wheels.

Cementing:

9 5/8" surface casing - cement with 163 sx Class "B" cement with 1/4# flocele/sx and 3% calcium chloride (188 cu.ft. of slurry, 200% excess to circulate to surface). WOC 8 hrs. Test casing to 600 psi for 30 minutes.

Saw tooth guide shoe on bottom. Bowspring, centralizers will be run in accordance with Onshore Order #2.

7" intermediate casing-

Lead w/377 sx Class "B" w/3% econolite, 10# gilsonite/sx and 1/2# flocele/sx. Tail w/90 sx 50/50 Class "B" Poz w/2% gel, 2% calcium chloride, 0.5# flocele/sx, and 10# gilsonite/sx (1197 cu.ft. of slurry, 75% excess to circulate to surface.) WOC minimum of 8 hours before drilling out intermediate casing. If cement does not circulate to surface, a CBL will be run to determine TOC. Test casing to 1500 psi for 30 minutes.

Cement nose guide shoe on bottom with float collar spaced on top of shoe joint. Bowspring centralizers spaced every other joint off bottom, to the base of the Ojo Alamo at 3855'. Two turbolating centralizers at the base of the Ojo Alamo at 3855'. Bowspring centralizers spaced every fourth joint from the base of the Ojo Alamo to the base of the surface casing.

4 1/2" Production Liner -

Cement to circulate liner top. Cement with 268 sx 50/50 Class "B" Poz w/1/4# flocele/sx, 5# gilsonite/sx and 0.3% fluid loss additive (357 cu.ft., 40% excess to circulate liner top). WOC a minimum of 18 hrs prior to completing.

Cement nose guide shoe on bottom with float collar spaced on top of shoe joint. The liner hanger will have a rubber packoff.

Special Drilling Operations (Gas/Mist Drilling):

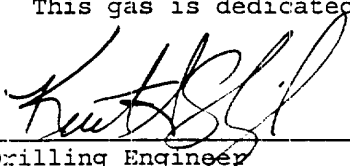
The following equipment will be operational while gas/mist drilling:

- An anchored blooie line will be utilized to discharge all cuttings and circulating medium to the blow pit a minimum of 100' from the wellhead.
- The blooie line will be equipped with an automatic igniter or pilot light.
- Compressors will be located a minimum of 100' from the wellhead in the opposite direction from the blooie line.
- Engines will have spark arresters or water cooled exhaust.
- The rotating head will be properly lubricated and maintained.
- A float valve will be utilized above the bit.
- Mud circulating equipment, water, and mud materials will be sufficient to maintain control of the well.

Additional Information:

- The Mesa Verde formation will be completed.
- No abnormal temperatures or hazards are anticipated.
- Anticipated pore pressures are as follows:

Fruitland Coal	800 psi
Pictured Cliffs	800 psi
Mesa Verde	700 psi
- Sufficient LCM will be added to the mud system to maintain well control, if lost circulation is encountered below the top of the Pictured Cliffs.
- All of the section is dedicated to the Mesa Verde.
- This gas is dedicated.



Drilling Engineer4/27/98

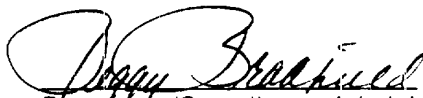
Date

BURLINGTON RESOURCES

San Juan 28-5 Unit #107
Multi-Point Surface Use Plan

1. Existing Roads - Refer to Map No. 1. Existing roads used to access the proposed location will be properly maintained for the duration of the project. Bureau of Land Management right-of-way has been applied for as shown on Map No. 1.
2. Planned Access Road - Refer to Map No. 1. None required.
3. Location of Existing Wells - Refer to Map No. 1A.
4. Location of Existing and/or Proposed Facilities if Well is Productive -
 - a. On the Well Pad - Refer to Plat No. 1, anticipated production facilities plat.
 - b. Off the Well Pad - Anticipated pipeline facilities as shown on the attached plat from El Paso Field Services.
5. Location and Type of Water Supply - Water will be hauled by truck for the proposed project and will be obtained from 44 Crossing Water Hole located NE Section 18, T-27-N, R-4-W, New Mexico.
6. Source of Construction Materials - If construction materials are required for the proposed project, such materials will be obtained from a commercial quarry.
7. Methods of Handling Waste Materials - All garbage and trash materials will be removed from the site for proper disposal. A portable toilet will be provided for human waste and serviced in a proper manner. If liquids are left in the reserve pit after completion of the project, the pit will be fenced until the liquids have had adequate time to dry. The location clean-up will not take place until such time as the reserve pit can be properly covered over to prevent run-off from carrying waste materials into the watershed. Reserve pits will be lined as needed with either 12 mil bio-degradable plastic liner or a bentonite liner. All earthen pits will be so constructed as to prevent leakage from occurring; no earthen pit will be located on natural drainage. Generation of hazardous waste is not anticipated. Federal regulations will be adhered to regarding handling and disposal of such waste if so generated.
8. Ancillary Facilities - None anticipated.
9. Wellsite Layout - Refer to the location diagram and to the wellsite cut and fill diagram (Figure No. 4). The blow pit will be constructed with a 2'/160' grade to allow positive drainage to the reserve pit and prevent standing liquids in the blow pit.

10. Plans for Restoration of the Surface - After completion of the proposed project, the location will be cleaned and leveled. The location will be left in such a condition that will enable reseeding operations to be carried out. Seed mixture as designated by the responsible government agency will be used. The reseeding operations will be performed during the time period set forth by the responsible government agency. The permanent location facilities will be painted as designated by the responsible government agency.
11. Surface Ownership - Bureau of Land Management
12. Other Information - Environmental stipulations as outlined by the responsible government agency will be adhered to. Refer to the archaeological report for a description of the topography, flora, fauna, soil characteristics, dwellings, historical and cultural sites.
13. Operator's Representative and Certification - Burlington Resources Oil & Gas Company Regional Drilling Manager, Post Office Box 4289, Farmington, NM 87499, telephone (505) 326-9700. I hereby certify that I, or persons under my direct supervision, have inspected the proposed drill site and access route; that I am familiar with the conditions which presently exist; that the statements made in this plan, are to the best of my knowledge, true and correct; and that the work associated with the operations proposed herein will be performed by Burlington Resources Oil and Gas Company and its contractors and subcontractors in conformity with this plan and the terms and conditions under which it is approved.



Regulatory/Compliance Administrator

4-17-98

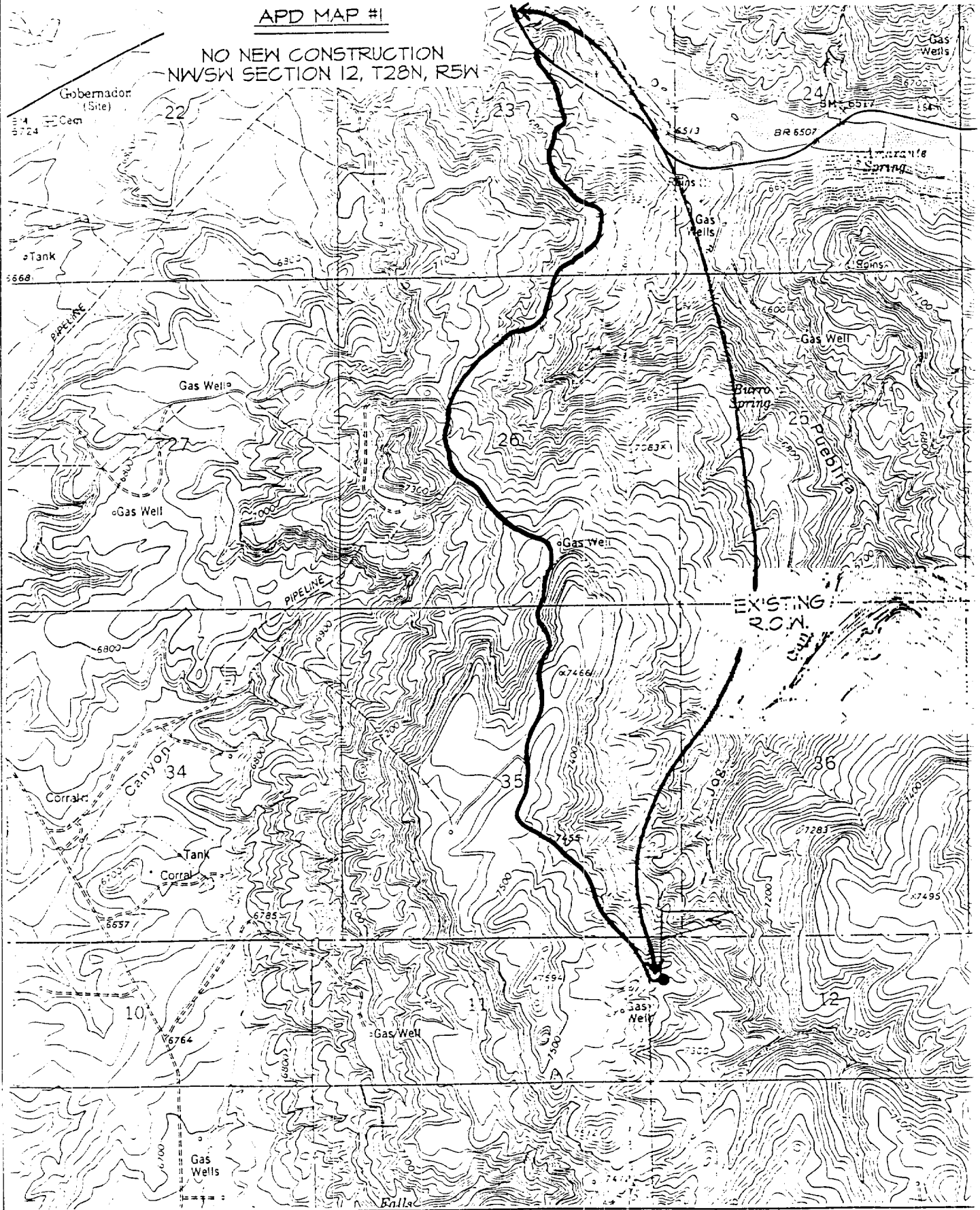
Date

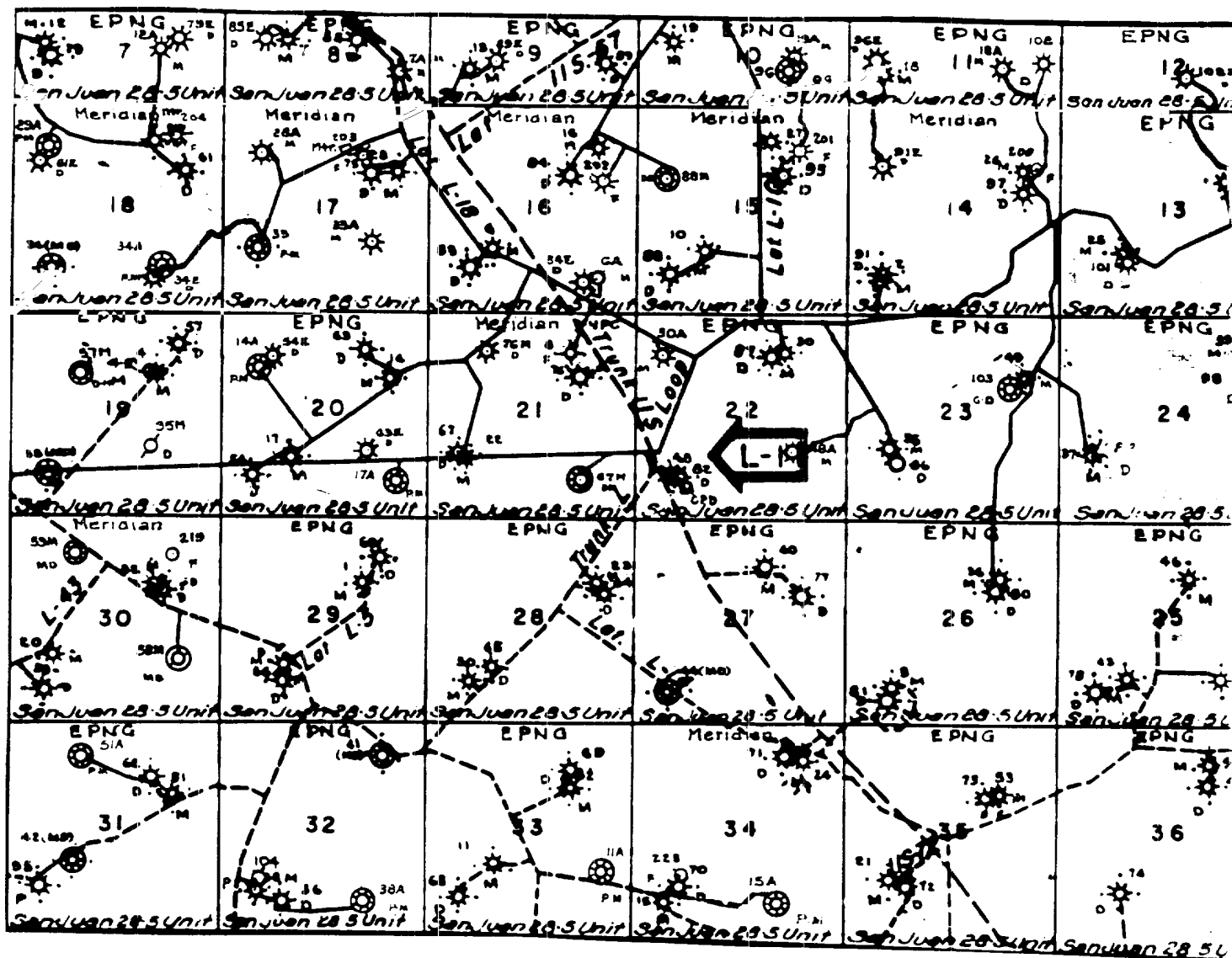
BURLINGTON RESOURCES OIL & GAS COMPANY SAN JUAN 28-5 UNIT #107

1600' FSL & 255' FWL, SECTION 12, T28N, R5W, N.M.P.M.
RIO ARriba COUNTY, NEW MEXICO

APD MAP #1

NO NEW CONSTRUCTION
NWSW SECTION 12, T28N, R5W

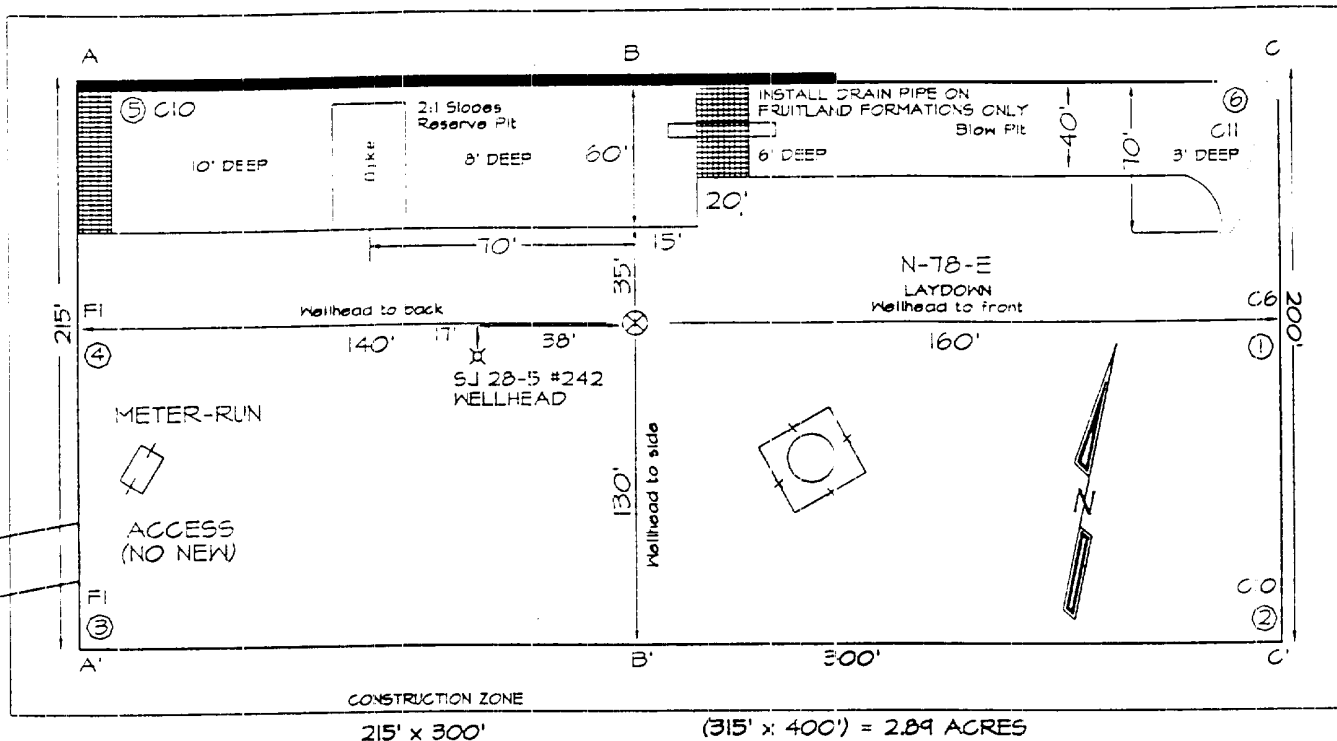




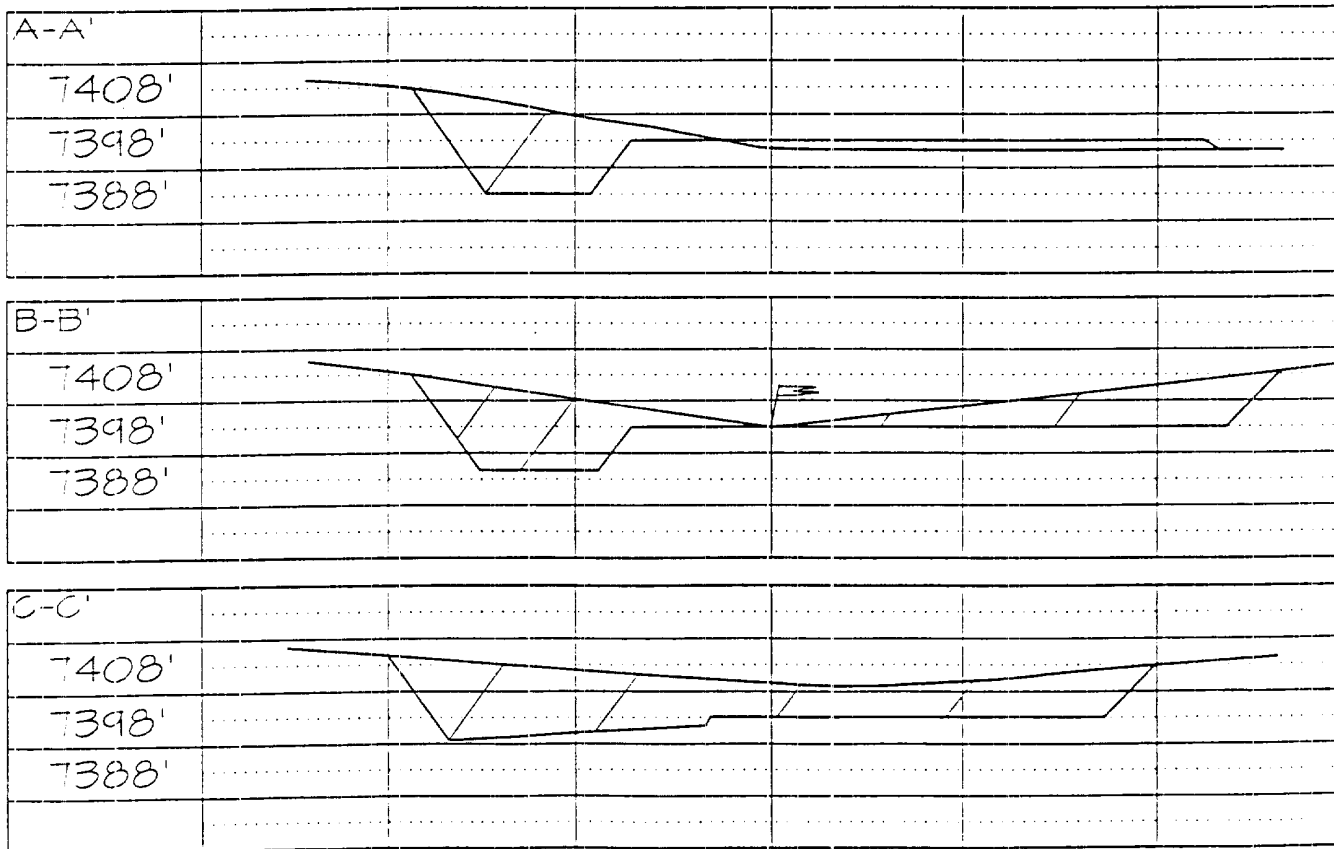
MERIDIAN OIL INC.
 Pipeline Map
 T-28-N, R-05-W
 Rio Arriba County, New Mexico
 San Juan 28-5 Unit #107
 Map 1A

PLAT #1

BURLINGTON RESOURCES OIL & GAS COMPANY
SAN JUAN 28-5 UNIT #107, 1600' FSL & 255' FWL
SECTION 12, T28N, R5W, NMPM, RIO ARriba COUNTY, NEW MEXICO
GROUND ELEVATION: 7398' DATE: FEBRUARY 15, 1998



Reserve Pit Dike: to be 8' above Deep side (overflow - 3' wide and 1' above shallow side).
 Blow Pit: overflow pipe halfway between top and bottom and to extend over plastic liner and into blow



Note: Contractor should call One-Call for location of any marked or unmarked buried pipelines or c on well pad and/or access road at least two (2) working days prior to construction

- 1) Burlington Resources
- 2) Phillips Petroleum Company
Attn: Mr. Scott Prather
5525 Hwy 64, NBU 3004
Farmington, NM 87401

Re: San Juan 28-5 Unit #107
1600'FSL, 255'FWL, Section 12, T-28-N, R-5-W, Rio Arriba County, NM
30-039-not assigned

I hereby certify that the following offset operators/owners have been mailed notification of our application for non-standard location to drill the referenced well.

Phillips Petroleum Company
Att: Scott Prather
5525 Highway 64, NBU 3004
Farmington, NM 87401

A handwritten signature in black ink, appearing to read "Reggy Bradfield". The signature is fluid and cursive, with a large loop at the beginning.

Reggy Bradfield
Regulatory/Compliance Administrator

