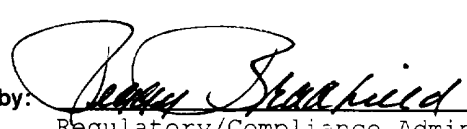
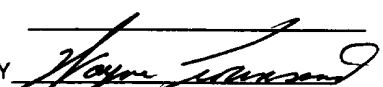


UNITED STATES
DEPARTMENT OF THE INTERIOR
BUREAU OF LAND MANAGEMENT

RECEIVED

APPLICATION FOR PERMIT TO DRILL, DEEPEN, OR PLUG BACK

| | | |
|---|---|--|
| 1a. Type of Work DRILL | 5. Lease Number SF-079731 | 63 JUN 18 PM 1:04 |
| | Unit Reporting Number 891000933B-DK | |
| | 8910998330-MV | |
| 1b. Type of Well GAS | 6. Indian, All. or Tribe | |
| 2. Operator BURLINGTON RESOURCES 14538 | OIL CON. DIV. DIST. 3 | Unit Agreement Name San Juan 28-4 Unit 7459 |
| 3. Address & Phone No. of Operator PO Box 4289, Farmington, NM 87499 (505) 326-9700 | 8. Farm or Lease Name San Juan 28-4 Unit | 9. Well Number 35M |
| 4. Location of Well 1410' FSL, 2050' FEL Latitude 36° 36' 47", Longitude 107° 15' 17" | 10. Field, Pool, Wildcat 12319 Blanco MV/Basin Dk | 11. Sec., Twn, Rge, Mer. (NMPM) J Sec 33, T-28-N, R-4-W API # 30-039- 25949 |
| 14. Distance in Miles from Nearest Town 60 miles to Bloomfield | 12. County RA | 13. State NM |
| 15. Distance from Proposed Location to Nearest Property or Lease Line 1410' | | |
| 16. Acres in Lease | 17. Acres Assigned to Well 320 | |
| 18. Distance from Proposed Location to Nearest Well, Drig, Compl, or Applied for on this Lease 2000' | | |
| 19. Proposed Depth 8705' | 20. Rotary or Cable Tools Rotary | |
| 21. Elevations (DF, FT, GR, Etc.) 7318' GR | 22. Approx. Date Work will Start 5-30-98 | |
| 23. Proposed Casing and Cementing Program See Operations Plan attached | DRILLING OPERATIONS AUTHORIZED ARE SUBJECT TO COMPLIANCE WITH ATTACHED "GENERAL REQUIREMENTS" | |
| 24. Authorized by:  Regulatory/Compliance Administrator | Date | |

PERMIT NO. _____ APPROVAL DATE AUG 21 1998
APPROVED BY  TITLE Pet. Eng. DATE 8/21/98

Archaeological Report to be submitted

Threatened and Endangered Species Report to be submitted

NOTE: This format is issued in lieu of U.S. BLM Form 3160-3

Title 18 U.S.C. Section 1001, makes it a crime for any person knowingly and willfully to make to any department or agency of the United States any false, fictitious or fraudulent statements or presentations as to any matter within its jurisdiction.

NMOCD

NSL-4075 @

District I
PO Box 1980, Hobbs NM 88241-1980
District II
PO Drawer KK, Artesia, NM 87211-0719
District III
1000 Rio Brazos Rd., Aztec, NM 87410
District IV
PO Box 2088, Santa Fe, NM 87504-2088

State of New Mexico
Energy, Minerals & Natural Resources Department

OIL CONSERVATION DIVISION
PO Box 2088
Santa Fe, NM 87504-2088

Form
Revised February 21,

Instructions on
Submit to Appropriate District
State Lease - 4 C
Fee Lease - 3 C

☐ AMENDED RE

WELL LOCATION AND ACREAGE DEDICATION PLAT

| | | |
|----------------------------|---|--|
| API Number 30-039-25949 | Pool Code 72319/71599 | Pool Name Blanco Mesaverde/Basin Dakota |
| Property Code 7459 | Property Name SAN JUAN 28-4 UNIT | Well Number # 35M |
| OGRID No. 14538 | Operator Name BURLINGTON RESOURCES OIL & GAS COMPANY | Elevation 7318 |

Surface Location

| | | | | | | | | | |
|--------------------|---------------|------------------|--------------|---------|-----------------------|---------------------------|-----------------------|------------------------|-----------------------|
| UL or Lot No. J | Section 33 | Township 28 N | Range 4 W | Lot Idn | Feet from the 1410 | North/South line SOUTH | Feet from the 2050 | East/West line EAST | County RIO ARIZONA |
|--------------------|---------------|------------------|--------------|---------|-----------------------|---------------------------|-----------------------|------------------------|-----------------------|

Bottom Hole Location If Different From Surface

| | | | | | | | | | |
|---------------|---------|----------|-------|---------|---------------|------------------|---------------|----------------|--------|
| UL or lot no. | Section | Township | Range | Lot Idn | Feet from the | North/South line | Feet from the | East/West line | County |
|---------------|---------|----------|-------|---------|---------------|------------------|---------------|----------------|--------|

Dedicated Acres
MV-S/320
DK-E/320

Joint or Infill
Consolidation Code
Order No.

NO ALLOWABLE WILL BE ASSIGNED TO THIS COMPLETION UNTIL ALL INTEREST HAVE BEEN CONSOLIDATED
OR A NON-STANDARD UNIT HAS BEEN APPROVED BY THE DIVISION

| | | | | | | | | | | | |
|----|----------|---|----|----------------|---------------|---------------|-------|-------|----------|----------|---|
| 16 | 5271'(R) | RECEIVED AUG 25 1998 OIL CON. DIV. DIST. 3 | 33 | NMSF - 079731A | NMSF - 079731 | NMSF - 079731 | 2050' | 1410' | 5280'(R) | 5280'(R) | 17 OPERATOR CERTIFICATION I hereby certify that the information contained here is true and complete to the best of my knowledge and belief. Signature Peggy Bradfield Printed Name Regulatory Administrator Title 5-30-98 Date |
| | | | | | | | | | | | 18 SURVEYOR CERTIFICATION I hereby certify that the well location shown on this plat was plotted from field notes of actual surveys made or under my supervision, and that the same is true and correct to the best of my belief. April 23, 1998 Date of Survey Signature and Seal of Professional Surveyor 7016 Certificate Number |
| | | | | | | | | | | | 7016 Certificate Number |

(R) - GLO Record

OPERATIONS PLAN

Well Name: San Juan 28-4 Unit #35M
Location: 1410' FSL, 2050' FEL Sec 33, T-28-N, R-4-W
Rio Arriba County, NM
Latitude 36° 36' 47", Longitude 107° 15' 17"
Formation: Blanco Mesa Verde/Basin Dakota
Elevation: 7318' GL

| <u>Formation Tops:</u> | <u>Top</u> | <u>Bottom</u> | <u>Contents</u> |
|-------------------------------|-------------------|----------------------|------------------------|
| Surface | San Jose | 3677' | |
| Ojo Alamo | 3677' | 3810' | aquifer |
| Kirtland | 3810' | 3856' | |
| Fruitland | 3856' | 4214' | gas |
| Pictured Cliffs | 4214' | 4353' | gas |
| Lewis | 4353' | 4781' | gas |
| Intermediate TD | 4453' | | |
| Huerfanito Bentonite | 4781' | 5218' | gas |
| Chacra | 5218' | 6037' | |
| Massive Cliff House | 6037' | 6119' | gas |
| Menefee | 6119' | 6393' | gas |
| Massive Point Lookout | 6393' | 6971' | gas |
| Mancos Shale | 6971' | 7581' | |
| Gallup | 7581' | 8365' | gas |
| Greenhorn | 8365' | 8430' | gas |
| Dakota | 8430' | | gas |
| TD (4 1/2" liner) | 8705' | | |

Logging Program:

Cased hole - CBL - TD to 200' above TOC, GR/CNL across MV/Dk

Mud Program:

| <u>Interval</u> | <u>Type</u> | <u>Weight</u> | <u>Vis.</u> | <u>Fluid Loss</u> |
|-----------------|-------------|---------------|-------------|-------------------|
| 0- 200' | Spud | 8.4-9.0 | 40-50 | no control |
| 200-4453' | LSND | 8.4-9.0 | 30-60 | no control |
| 4453-8705' | Gas | n/a | n/a | n/a |

Pit levels will be visually monitored to detect gain or loss of fluid control.

Casing Program (as listed, the equivalent, or better):

| <u>Hole Size</u> | <u>Depth Interval</u> | <u>Csg. Size</u> | <u>Wt.</u> | <u>Grade</u> |
|------------------|-----------------------|------------------|------------|--------------|
| 12 1/4" | 0' - 200' | 9 5/8" | 32.3# | WC-50 |
| 8 3/4" | 0' - 4453' | 7" | 20.0# | J-55 |
| 6 1/4" | 4353' - 8705' | 4 1/2" | 10.5# | J-55 |

Tubing Program:

0' - 8705' 2 3/8" 4.70# EUE

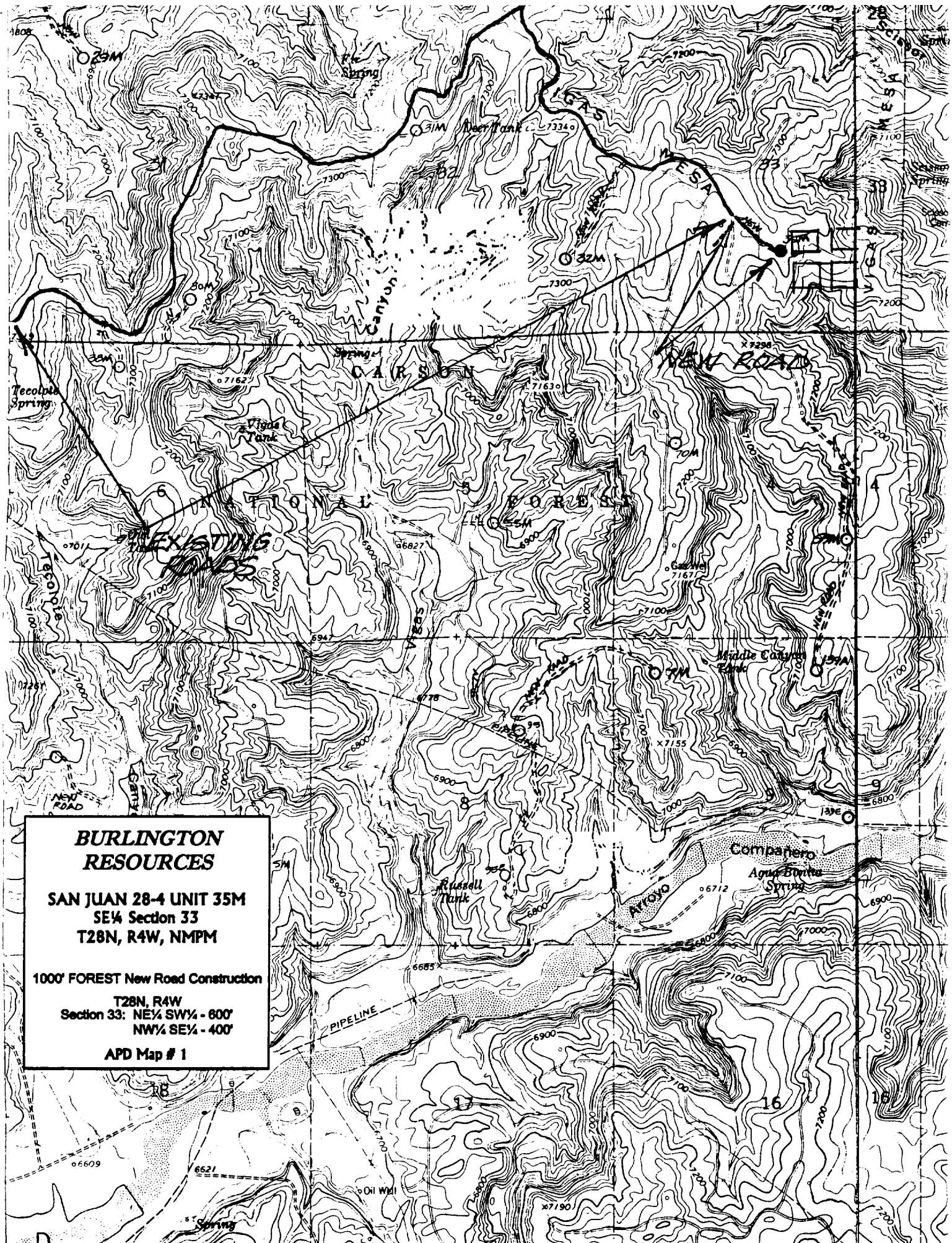
BOP Specifications, Wellhead and Tests:

Surface to Intermediate TD -

11" 2000 psi minimum double gate BOP stack (Reference Figure #1).
After nipple-up prior to drilling out surface casing, rams and casing will be tested to 600 psi for 30 minutes.

Intermediate TD to Total Depth -

11" 2000 psi minimum double gate BOP stack (Reference Figure #1).
After nipple-up prior to drilling out intermediate casing, rams and casing will be tested to 1500 psi for 30 minutes.



**BURLINGTON
RESOURCES**

**SAN JUAN 28-4 UNIT 35M
SE¼ Section 33
T28N, R4W, NMPM**

1000' FOREST New Road Construction

**T28N, R4W
Section 33: NE¼ SW¼ - 600'
NW¼ SE¼ - 400'**

APD Map # 1

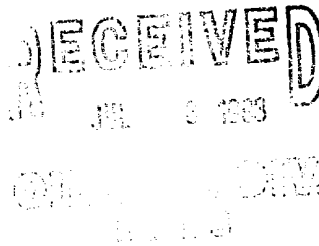


NEW MEXICO ENERGY, MINERALS
& NATURAL RESOURCES DEPARTMENT

OIL CONSERVATION DIVISION
2040 South Pacheco Street
Santa Fe, New Mexico 87505
(505) 827-7131

June 26, 1998

Burlington Resources Oil & Gas Company
P. O. Box 4289
Farmington, New Mexico 87499-4289
Attention: Peggy Bradfield



35m
33-28-4

Administrative Order NSL-4075

Dear Ms. Bradfield:

Reference is made to your application submitted to the New Mexico Oil Conservation Division ("Division") on June 9, 1998 for an exception to the well location requirements provided within the "*Special Rules and Regulations for the Blanco-Mesaverde Pool/Special Rules and Regulations for the Basin-Dakota Pool*," as promulgated by Division Order No. R-10987, for Burlington Resources Oil & Gas Company's ("Burlington") proposed San Juan "28-4" Unit Well No. 35-M to be drilled at an unorthodox gas well location in both the Blanco-Mesaverde and Basin-Dakota Pools 1410 feet from the South line and 2050 feet from the East line (Unit J) of Section 33, Township 28 North, Range 4 West, NMPM, Rio Arriba County, New Mexico.

Gas production from the Blanco-Mesaverde Pool is to be included in an existing standard 320-acre lay-down gas spacing and proration unit comprising the S/2 of Section 33 which is currently dedicated to Burlington's San Juan "28-4" Unit Well No. 12 (API No. 30-039-07245), located at a standard gas well location 1850 feet from the South and West lines (Unit K) of Section 33.

Gas production from the Basin-Dakota Pool is to be dedicated to a standard stand-up 320-acre gas spacing and proration unit comprising the E/2 of Section 33.

The application has been duly filed under the provisions of Division Rules 104.F and 605.B of the Rules and Regulations of the New Mexico Oil Conservation Division ("Division").

By the authority granted me under the provisions of Division Rule 104.F(2), the above-described unorthodox Blanco-Mesaverde "infill" gas well location and Basin-Dakota gas well location for the San Juan "28-4" Unit Well No. 35-M is hereby approved. Both of the aforementioned San Juan "28-4" Unit Well Nos. 12 and 35-M and both spacing units will be subject to all existing rules, regulations, policies, and procedures applicable to prorated gas pools in Northwest, New Mexico.

Sincerely,


Lori Wrotenbery
Director

LW/MES/kv

cc: New Mexico Oil Conservation Division - Aztec /
U. S. Bureau of Land Management - Farmington

BURLINGTON RESOURCES

SAN JUAN DIVISION

Sent Federal Express

Ms. Lori Wrotenbery, Director
New Mexico Oil Conservation Division
2040 South Pacheco
Santa Fe, New Mexico 87505

RECEIVED
JUN 10 1998

OIL CON. DIV.
DIST. 3

Re: San Juan 28-4 Unit #35M
1410'FSL, 2050'FEL Section 33, T-28-N, R-4-W, Rio Arriba County, NM
30-039-not assigned

Dear Ms. Wrotenbery:

Burlington Resources is applying for administrative approval of an unorthodox gas well location for the Blanco Mesa Verde and Basin Dakota pools. This application for the referenced location is for topographic and archaeological reasons, and at the request of the U.S. Forest Service that is the surface owner.

Production from the Blanco Mesa Verde pool is to be included in a standard 320 acre gas spacing and proration unit comprising of the south half (S/2) of Section 33 which is currently dedicated to the San Juan 28-4 Unit #12 (30-039-07245) located at 1850'FSL, 1850'FWL of Section 33. Production from the Basin Dakota is to be included in a standard 320 acre gas spacing and proration unit comprising of the east half (E/2) of Section 33 which was dedicated to the San Juan 28-4 Unit #35 (30-039-20510) located at 1525'FNL, 1650'FEL of Section 33. This well was plugged and abandoned September 1995.

The following attachments are for your review:

1. Application for Permit to Drill.
2. Completed C-102 at referenced location.
3. Offset operators/owners plat.
4. 7.5 minute topographic map, and enlargement of the map to define topographic features.

We appreciate your earliest consideration of this application.

Sincerely,




Peggy Bradfield
Regulatory/Compliance Administrator

xc: NMOCD - Aztec District Office
Bureau of Land Management - Farmington District Office

UNITED STATES
DEPARTMENT OF THE INTERIOR
BUREAU OF LAND MANAGEMENT

APPLICATION FOR PERMIT TO DRILL, DEEPEN, OR PLUG BACK

| | | |
|---|---|---|
| 1a. Type of Work DRILL | RECEIVED JUN 10 1998 OIL CON. DIV. DIST. 3 | 5. Lease Number SF-079731 Unit Reporting Number 891000933B-Dk 8910998330-MV |
| 1b. Type of Well GAS | | 6. If Indian, All. or Tribe |
| 2. Operator BURLINGTON RESOURCES Oil & Gas Company | 7. Unit Agreement Name San Juan 28-4 Unit | |
| 3. Address & Phone No. of Operator PO Box 4289, Farmington, NM 87499 (505) 326-9700 | 8. Farm or Lease Name San Juan 28-4 Unit 9. Well Number 35M | |
| 4. Location of Well 1410' FSL, 2050' FEL Latitude 36° 36' 47", Longitude 107° 15' 17" | 10. Field, Pool, Wildcat Blanco MV/Basin Dk 11. Sec., Twn, Rge, Mer. (NMPM) Sec 33, T-28-N, R-4-W API # 30-039- | |
| 14. Distance in Miles from Nearest Town 60 miles to Bloomfield | 12. County RA | 13. State NM |
| 15. Distance from Proposed Location to Nearest Property or Lease Line 1410' | 17. Acres Assigned to Well 320 | |
| 16. Acres in Lease | | |
| 18. Distance from Proposed Location to Nearest Well, Drig, Compl, or Applied for on this Lease 2000' | | |
| 19. Proposed Depth 8705' | 20. Rotary or Cable Tools Rotary | |
| 21. Elevations (DF, FT, GR, Etc.) 7318' GR | 22. Approx. Date Work will Start | |
| 23. Proposed Casing and Cementing Program See Operations Plan attached | | |
| 24. Authorized by:  Regulatory/Compliance Administrator | Date <u>5-30-98</u> | |

PERMIT NO. _____ APPROVAL DATE _____
APPROVED BY _____ TITLE _____ DATE _____

Archaeological Report to be submitted

Threatened and Endangered Species Report to be submitted

NOTE: This format is issued in lieu of U.S. BLM Form 3160-3

Title 18 U.S.C. Section 1001. makes it a crime for any person knowingly and willfully to make to any department or agency of the United States any false, fictitious or fraudulent statements or presentations as to any matter within its jurisdiction.

☐ AMENDED

WELL LOCATION AND ACREAGE DEDICATION PLAT

| | | | | | |
|---------------|--|--|--|-------------------------------|-----------|
| API Number | | Pool Code | | Pool Name | |
| 30-039- | | 72319/71599 | | Blanco Mesaverde/Basin Dakota | |
| Property Code | | Property Name | | | Well Name |
| 7459 | | SAN JUAN 28-4 UNIT | | | # 35 |
| OGRID No. | | Operator Name | | | Elevation |
| 14538 | | BURLINGTON RESOURCES OIL & GAS COMPANY | | | 731 |

16 Surface Location

| | | | | | | | | | |
|---------------|---------|----------|-------|---------|---------------|------------------|---------------|----------------|--------|
| UL or Lot No. | Section | Township | Range | Lot No. | Feet from the | North/South line | Feet from the | East/West line | County |
| J | 33 | 28 N | 4 W | | 1410 | SOUTH | 2050 | EAST | RIO |

" Bottom Hole Location If Different From Surface

| UL or lot no. | Section | Township | Range | Lot 1/4 | Feet from the | North/South line | Feet from the | East/West line | County |
|---------------|---------|----------|-------|---------|---------------|------------------|---------------|----------------|--------|
|---------------|---------|----------|-------|---------|---------------|------------------|---------------|----------------|--------|

| 1. Deductible Across | 2. Joint or split | 3. Compensation Code | 4. Order No. |
|----------------------|-------------------|----------------------|--------------|
| MV-S/320 | | | |
| DK-E/320 | | | |

NO ALLOWABLE WILL BE ASSIGNED TO THIS COMPLETION UNTIL ALL INTEREST HAVE BEEN CONSOLIDATED OR A NON-STANDARD UNIT HAS BEEN APPROVED BY THE DIVISION

| | | | |
|--|----------------------|---------------------------|---|
| <p>16</p> <p>5271'(R)</p> <p>RECEIVED JUN 10 1998 OIL CON. DIV. DWT 3</p> | <p>5271'(R)</p> | <p>5271'(R)</p> | <p>17 OPERATOR CERTIFIC. I hereby certify that the information contained herein is true and complete to the best of my knowledge.</p> <p><i>Peggy Bradfield</i> Signature Peggy Bradfield Printed Name Regulatory Administrator Title 5-30-98 Date</p> |
| <p>5280'(R)</p> | <p>33</p> | <p>5280'(R)</p> | <p>18 SURVEYOR CERTIFIC. I hereby certify that the well location shown was plotted from field notes of actual surveys or under my supervision, and that the same is correct to the best of my belief.</p> <p>April 23, 1998 Date of Survey</p> |
| <p>5280'(R)</p> | <p>NMSF - 079731</p> | <p>NMSF - 079731A</p> | <p>Signature and Seal of Professional Surveyor</p> |
| <p>5280'(R)</p> | <p>NMSF - 079731</p> | <p>2050'</p> <p>1410'</p> | <p>7016 Certificate Number</p> |

(R) - GLO Record

OPERATIONS PLAN

Well Name: San Juan 28-4 Unit #35M
Location: 1410' FSL, 2050' FEL Sec 33, T-28-N, R-4-W
Rio Arriba County, NM
Latitude 36° 36' 47", Longitude 107° 15' 17"
Formation: Blanco Mesa Verde/Basin Dakota
Elevation: 7318' GL

| <u>Formation Tops:</u> | <u>Top</u> | <u>Bottom</u> | <u>Contents</u> |
|--------------------------|--------------|---------------|-----------------|
| Surface | San Jose | 3677' | |
| Ojo Alamo | 3677' | 3810' | aquifer |
| Kirtland | 3810' | 3856' | |
| Fruitland | 3856' | 4214' | gas |
| Pictured Cliffs | 4214' | 4353' | gas |
| Lewis | 4353' | 4781' | gas |
| Intermediate TD | 4453' | | |
| Huerfanito Bentonite | 4781' | 5218' | gas |
| Chacra | 5218' | 6037' | |
| Massive Cliff House | 6037' | 6119' | gas |
| Menefee | 6119' | 6393' | gas |
| Massive Point Lookout | 6393' | 6971' | gas |
| Mancos Shale | 6971' | 7581' | |
| Gallup | 7581' | 8365' | gas |
| Greenhorn | 8365' | 8430' | gas |
| Dakota | 8430' | | gas |
| TD (4 1/2" liner) | 8705' | | |

Logging Program:

Cased hole - CBL - TD to 200' above TOC, GR/CNL across MV/Dk

Mud Program:

| <u>Interval</u> | <u>Type</u> | <u>Weight</u> | <u>Vis.</u> | <u>Fluid Loss</u> |
|-----------------|-------------|---------------|-------------|-------------------|
| 0- 200' | Spud | 8.4-9.0 | 40-50 | no control |
| 200-4453' | LSND | 8.4-9.0 | 30-60 | no control |
| 4453-8705' | Gas | n/a | n/a | n/a |

Pit levels will be visually monitored to detect gain or loss of fluid control.

Casing Program (as listed, the equivalent, or better):

| <u>Hole Size</u> | <u>Depth Interval</u> | <u>Csg. Size</u> | <u>Wt.</u> | <u>Grade</u> |
|------------------|-----------------------|------------------|------------|--------------|
| 12 1/4" | 0' - 200' | 9 5/8" | 32.3# | WC-50 |
| 8 3/4" | 0' - 4453' | 7" | 20.0# | J-55 |
| 6 1/4" | 4353' - 8705' | 4 1/2" | 10.5# | J-55 |

Tubing Program:

0' - 8705' 2 3/8" 4.70# EUE

BOP Specifications, Wellhead and Tests:

Surface to Intermediate TD -

11" 2000 psi minimum double gate BOP stack (Reference Figure #1).
After nipple-up prior to drilling out surface casing, rams and casing will be tested to 600 psi for 30 minutes.

Intermediate TD to Total Depth -

11" 2000 psi minimum double gate BOP stack (Reference Figure #1).
After nipple-up prior to drilling out intermediate casing, rams and casing will be tested to 1500 psi for 30 minutes.

Surface to Total Depth -

2" nominal, 2000 psi minimum choke manifold (Reference Figure #3).

Completion Operations -

7 1/16" 2000 psi double gate BOP stack (Reference Figure #2). After nipple-up prior to completion, pipe rams, casing and liner top will be tested to 2000 psi for 15 minutes.

Wellhead -

9 5/8" x 7" x 2 3/8" x 3000 psi tree assembly.

General -

- Pipe rams will be actuated once each day and blind rams will be actuated once each trip to test proper functioning.
- An upper kelly cock valve with handle available and drill string valves to fit each drill string will be available on the rig floors at all times.
- BOP pit level drill will be conducted weekly for each drilling crew.
- All BOP tests and drills will be recorded in daily drilling reports.
- Blind and pipe rams will be equipped with extension hand wheels.

Cementing:

9 5/8" surface casing - cement with 163 sx Class "B" cement with 1/4# flocele/sx and 2% calcium chloride (188 cu.ft. of slurry, 200% excess to circulate to surface). WOC 8 hrs. Test casing to 600 psi for 30 minutes.

Saw tooth guide shoe on bottom. Bowspring centralizers will be run in accordance with Onshore Order #2.

7" intermediate casing -

Lead w/368 sx Class "B" w/3% metasilicate, 10# gilsonite/sx and 1/2# flocele/sx. Tail w/90 sx 50/50 Class "B" Poz w/2% calcium chloride, 2% gel, 1/2# flocele/sx, 10# gilsonite/sx (1171 cu.ft. of slurry, 75% excess to circulate to surface.) WOC minimum of 8 hours before drilling out intermediate casing. If cement does not circulate to surface, a CBL will be run during completion operations to determine TOC. Test casing to 1500 psi for 30 minutes.

Cement nose guide shoe on bottom with float collar spaced on top of shoe joint. Bowspring centralizers spaced every other joint off bottom, to the base of the Ojo Alamo at 3810'. Two turbolating centralizers at the base of the Ojo Alamo at 3810'. Bowspring centralizers spaced every fourth joint from the base of the Ojo Alamo to the base of the surface casing.

4 1/2" Production Liner -

Cement to cover minimum of 100' of 4 1/2" x 7" overlap. Cement with 470 sx 50/50 Class "B" Poz with 2% gel, 1/4# flocele/sx, 5# gilsonite/sx, and 0.4% fluid loss additive (625 cu.ft., 40% excess to cement 4 1/2" x 7" overlap). WOC a minimum of 18 hrs prior to completing.

Cement float shoe on bottom with float collar spaced on top of shoe joint.

Note: To facilitate higher hydraulic stimulation completion work, no liner hanger will be used. Instead, a long string of 4 1/2" casing will be run and cemented with a minimum of 100' of cement overlap between the 4 1/2" x 7" casing strings. After completion of the well, a 4 1/2" CIBP will be set above the last fracturing job to cut and pull the 4 1/2" casing above the 7" casing shoe. The 4 1/2" bridge plug will then be milled and tubing will be run for completion.

Special Drilling Operations (Gas/Mist Drilling):

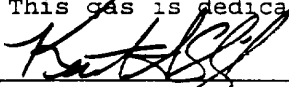
The following equipment will be operational while gas/mist drilling:

- An anchored blooie line will be utilized to discharge all cuttings and circulating medium to the blow pit a minimum of 100' from the wellhead.
- The blooie line will be equipped with an automatic igniter or pilot light.
- Compressors will be located a minimum of 100' from the wellhead in the opposite direction from the blooie line.
- Engines will have spark arresters or water cooled exhaust.
- Deduster equipment will be utilized.
- The rotating head will be properly lubricated and maintained.
- A float valve will be utilized above the bit.
- Mud circulating equipment, water, and mud materials will be sufficient to maintain control of the well.

Additional Information:

- The Dakota and Mesa Verde formations will be completed and commingled.
- No abnormal temperatures or hazards are anticipated.
- Anticipated pore pressures are as follows:

| | |
|-----------------|----------|
| Fruitland Coal | 800 psi |
| Pictured Cliffs | 800 psi |
| Mesa Verde | 700 psi |
| Dakota | 2500 psi |
- Sufficient LCM will be added to the mud system to maintain well control, if lost circulation is encountered.
- The east half is dedicated to the Dakota and the south half is dedicated to the Mesa Verde in this well.
- This gas is dedicated.



Drilling Engineer

5/5/93

Date

BURLINGTON RESOURCES

San Juan 28-4 Unit #35M
Multi-Point Surface Use Plan

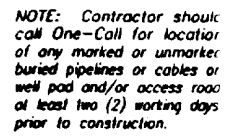
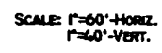
1. Existing Roads - Refer to Map No. 1. Existing roads used to access the proposed location will be properly maintained for the duration of the project. Bureau of Land Management right-of-way has been applied for as shown on Map No. 1.
2. Planned Access Road - Refer to Map No. 1. The required new access road is shown on Map No. 1. The gradient, shoulder, crowning and other design elements will meet or exceed those specified by the responsible government agency. The new access road surface will not exceed twenty feet (20') in width. No additional turnarounds or turnouts will be required. Upon completion of the project, the access road will be adequately drained to control soil erosion. Approximately 1100' of access road will be constructed. Pipelines are indicated on Map No. 1A.
3. Location of Existing Wells - Refer to Map No. 1A.
4. Location of Existing and/or Proposed Facilities if Well is Productive -
 - a. On the Well Pad - Refer to Plat No. 1, anticipated production facilities plat.
 - b. Off the Well Pad - Anticipated pipeline facilities as shown on the attached plat from Williams Field Service.
5. Location and Type of Water Supply - Water will be hauled by truck for the proposed project and will be obtained from San Juan 27-5 Water Well #1 located NE/4 Section 3, T-27-N, R-5-W, New Mexico.
6. Source of Construction Materials - If construction materials are required for the proposed project, such materials will be obtained from a commercial quarry.
7. Methods of Handling Waste Materials - All garbage and trash materials will be removed from the site for proper disposal. A portable toilet will be provided for human waste and serviced in a proper manner. If liquids are left in the reserve pit after completion of the project, the pit will be fenced until the liquids have had adequate time to dry. The location clean-up will not take place until such time as the reserve pit can be properly covered over to prevent run-off from carrying waste materials into the watershed. Reserve pits will be lined as needed with either 12 mil bio-degradable plastic liner or a bentonite liner. All earthen pits will be so constructed as to prevent leakage from occurring; no earthen pit will be located on natural drainage. Generation of hazardous waste is not anticipated. Federal regulations will be adhered to regarding handling and disposal of such waste if so generated.
8. Ancillary Facilities - None anticipated.
9. Wellsite Layout - Refer to the location diagram and to the wellsite cut and fill diagram (Figure No. 4). The blow pit will be constructed with a 2'/160' grade to allow positive drainage to the reserve pit and prevent standing liquids in the blow pit.

10. Plans for Restoration of the Surface - After completion of the proposed project, the location will be cleaned and leveled. The location will be left in such a condition that will enable reseeding operations to be carried out. Seed mixture as designated by the responsible government agency will be used. The reseeding operations will be performed during the time period set forth by the responsible government agency. The permanent location facilities will be painted as designated by the responsible government agency.
11. Surface Ownership – Carson National Forest
12. Other Information - Environmental stipulations as outlined by the responsible government agency will be adhered to. Refer to the archaeological report for a description of the topography, flora, fauna, soil characteristics, dwellings, historical and cultural sites.
13. Operator's Representative and Certification - Burlington Resources Oil & Gas Company Regional Drilling Manager, Post Office Box 4289, Farmington, NM 87499, telephone (505) 326-9700. I hereby certify that I, or persons under my direct supervision, have inspected the proposed drill site and access route; that I am familiar with the conditions which presently exist; that the statements made in this plan, are to the best of my knowledge, true and correct; and that the work associated with the operations proposed herein will be performed by Burlington Resources Oil and Gas Company and its contractors and subcontractors in conformity with this plan and the terms and conditions under which it is approved.


Regulatory/Compliance Administrator

5-30-98
Date

RIO ARRIBA COUNTY, NEW MEXICO



VANN SURVEYS
304 N. Locke
Farmington, NM

BURLINGTON RESOURCES OIL AND GAS COMPANY

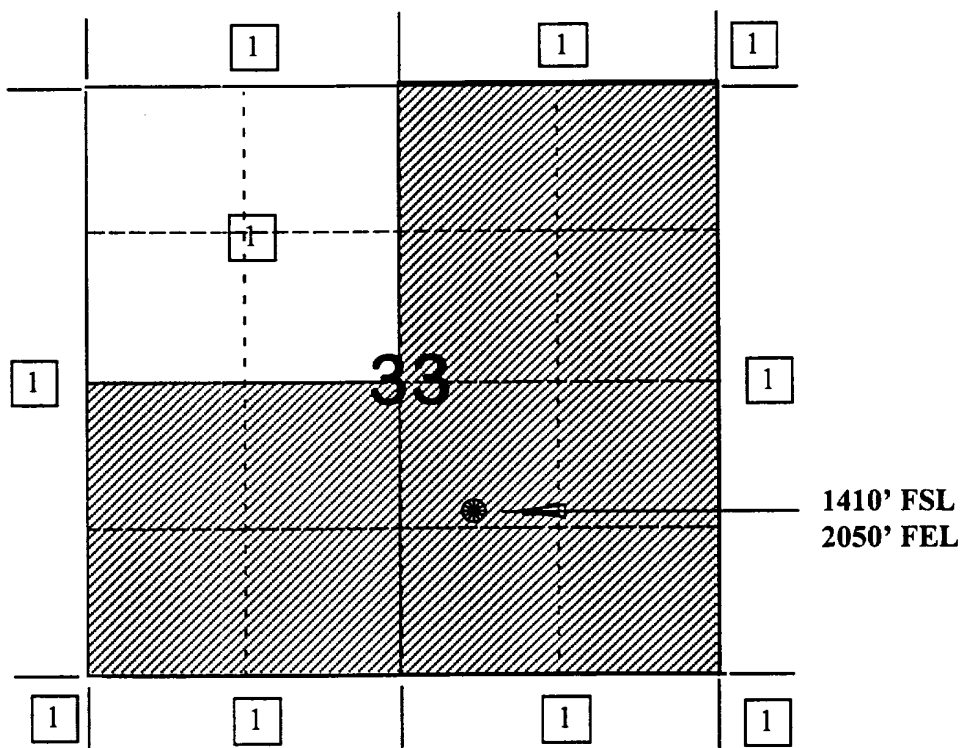
San Juan 28-4 Unit #35M

OFFSET OPERATOR/OWNER PLAT

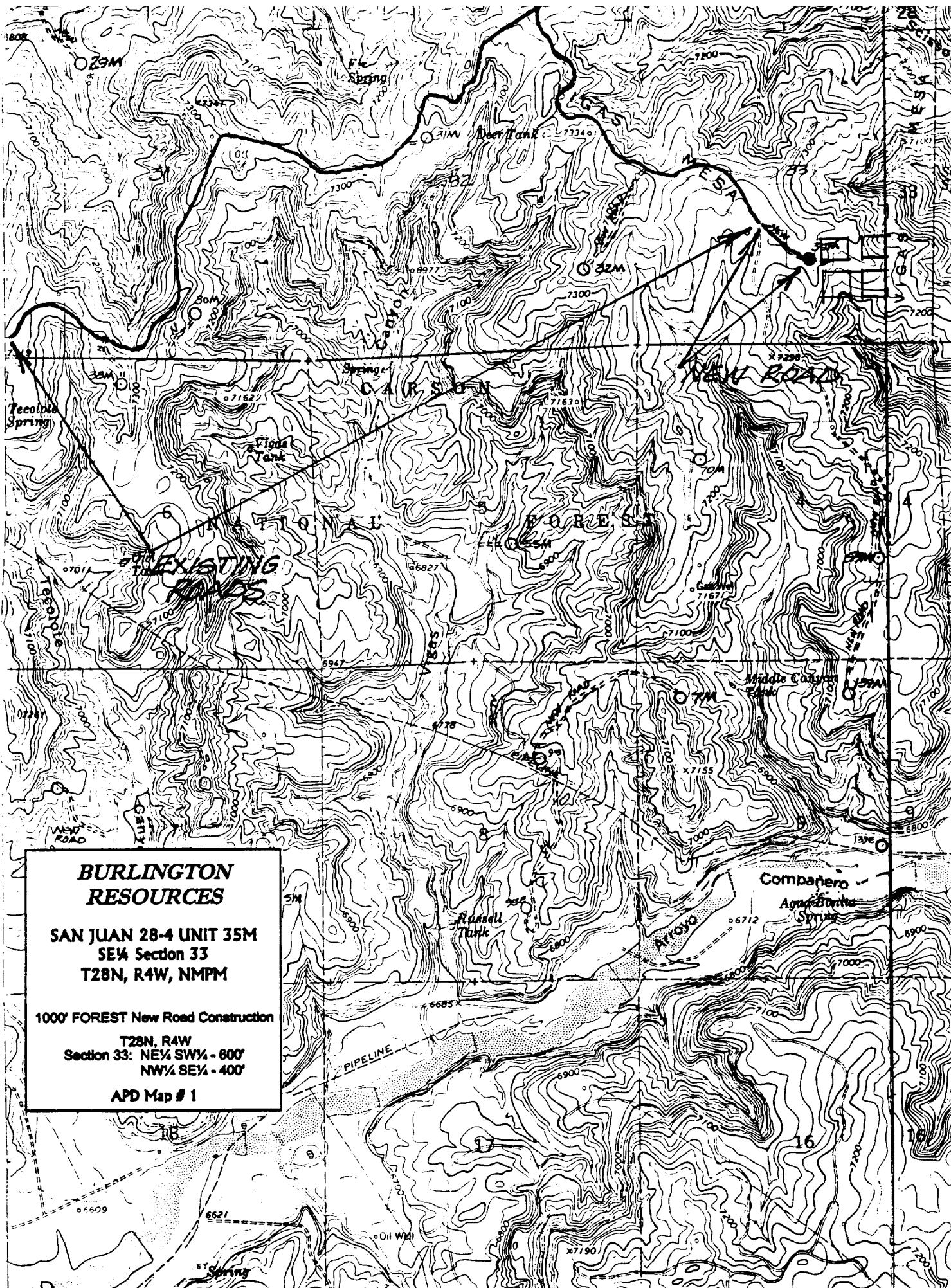
Nonstandard Location

Mesaverde (S/2) / Dakota (E/2) Formations Well

Township 28 North, Range 4 West



1) Burlington Resources



**BURLINGTON
RESOURCES**

SAN JUAN 28-4 UNIT 35M
SE $\frac{1}{4}$ Section 33
T28N, R4W, NMPM

1000' FOREST New Road Construction

T28N, R4W
Section 33: NE $\frac{1}{4}$ SW $\frac{1}{4}$ - 800'
NW $\frac{1}{4}$ SE $\frac{1}{4}$ - 400'

APD Map # 1