

UNITED STATES
DEPARTMENT OF THE INTERIOR
BUREAU OF LAND MANAGEMENT

(Other instructions on
reverse side)

FORM APPROVED
OMB NO. 1004-0138
Expires February 28, 1995

APPLICATION FOR PERMIT TO DRILL OR DEEPEN

1a. TYPE OF WORK

DRILL ☒

DEEPEN ☐

99 JAN 19 PM 2:48

b. TYPE OF WELL

OIL WELL ☐

GAS WELL ☒

OTHER

SINGLE ZONE ☒

MULTIPLE ZONE ☐

2. NAME OF OPERATOR

Conoco Inc.

3. ADDRESS AND TELEPHONE NO

10 Desta Dr. Ste 430E, Midland, Tx. 79705-4500

4. LOCATION OF WELL (Report location clearly and in accordance with any State requirements)

At surface

1030' FSL & 1025' FEL

At proposed prod. zone

1030' FSL & 1025' FEL

14. DISTANCE IN MILES AND DIRECTION FROM NEAREST TOWN OR POST OFFICE*

5. DISTANCE FROM PROPOSED*

LOCATION TO NEAREST
PROPERTY OR LEASE LINE, FT.
(Also to nearest drlg. unit line, if Any)

16. NO. OF ACRES IN LEASE

17. NO. OF ACRES ASSIGNED
TO THIS WELL

8. DISTANCE FROM PROPOSED LOCATION*
TO NEAREST WELL, DRILLING, COMPLETED,
OR APPLIED FOR, ON THIS LEASE, FT.

19. PROPOSED DEPTH

8399'

20. ROTARY OR CABLE TOOLS

Rotary

21. ELEVATIONS (Show whether DF, RT, GR, etc)

6817' GR

22. APPROX. DATE WORK WILL START*

2/1/99

23

PROPOSED CASING AND CEMENTING PROGRAM

SIZE OF HOLE	GRADE, SIZE OF CASING	WEIGHT PER FOOT	SETTING DEPTH	QUANTITY OF CEMENT
12-1/4"	H-40, 9-5/8"	32.3#	250'	150 sxs, circ.
8-3/4"	J-55, 7"	20#	4136'	540sxs, circ.
6-1/4"	J/K-55, 4-1/2"	9.5#	3836'-8099	560 sxs, toc @ 3836'

It is proposed to drill a vertical wellbore to be downhole commingled in the Pictured Cliff and Fruitland Coal Pools and then dual produced with the Dakota following the acquisition of sufficient production test data for allocation purposes. A downhole commingling application has been filed with the BLM and OCD. An NOS was filed 10/30/97. The well will be drilled and equipped according to the following additional attachments:

1. Well Location & Acreage Dedication Plat (C-102).
2. Proposed Well Plan Outline.
3. Cementing Plan.
4. Blowout Preventer Hookup.
5. Surface Use Plan including temporary pipeline tie specifications.
6. Production Facility layout.

This application includes ROW's for the well pad, cathodic protection and pipeline. The pipe-wall thickness is .156 and the pipe-wall strength is 42,000# yield.

IN ABOVE SPACE DESCRIBE PROPOSED PROGRAM: If proposal is to deepen give data on present productive zone and proposed new productive zone. If proposal is to drill or deepen directionally, give pertinent data on subsurface locations and measured and true vertical depths. Give blowout preventer program, if any.

24.

SIGNED

Jo Ann Johnson

TITLE

Jo Ann Johnson

Sr. Property Analyst

DATE

1-14-99

(This space for Federal or State office use)

PERMIT NO

APPROVAL DATE

JAN 20 1999

Application approval does not warrant or certify that the applicant holds legal or equitable title to those rights in the subject lease which would entitle the applicant to conduct operations thereon.
CONDITIONS OF APPROVAL, IF ANY:

APPROVED BY

/s/ Duane W. Spencer

TITLE

DATE

JAN 20 1999

*See Instructions On Reverse Side

Title 18 U.S.C. Section 1001, makes it a crime for any person knowingly and willfully to make to any department or agency of the United States any false, fictitious or fraudulent statements or representations as to any matter within its jurisdiction.

R-2946 ADDITION FOR NSL NMOC

District I
PO Box 1930, Hobbs, NM 88241-1930

District II
PO Drawer 00, Artesia, NM 88211-0719

District III
1000 Rio Brazos Rd., Aztec, NM 87410

District IV
PO Box 2088, Santa Fe, NM 87504-2088

State of New Mexico
Energy, Minerals & Natural Resources Department

OIL CONSERVATION DIVISION
PO Box 2088
Santa Fe, NM 87504-2088

Form C-102
Revised February 21, 1994
Instructions on back
Submit to Appropriate District Office
State Lease - 4 Copies
Fee Lease - 3 Copies

99 JAN 19 PM 2:18 AMENDED REPORT

WELL LOCATION AND ACREAGE DEDICATION PLAT

*API Number 30-039-26065	*Pool Code 71629/72439	*Pool Name Basin Fruitland Coal/Blanco PC South
*Property Code 016608	*Property Name SAN JUAN 28-7 UNIT	*Well Number 218E
*GRID No. 005073	*Operator Name CONOCO, INC.	*Elevation 6817

10 Surface Location

UL or lot no. P	Section 12	Township 28N	Range 7W	Lot 10	Feet from the 1030	North/South line South	Feet from the 1025	East/West line East	County RIO ARriba
--------------------	---------------	-----------------	-------------	--------	-----------------------	---------------------------	-----------------------	------------------------	----------------------

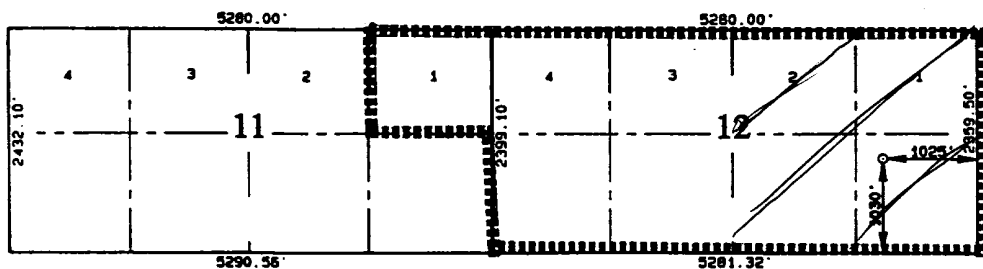
11 Bottom Hole Location If Different From Surface

UL or lot no.	Section	Township	Range	Lot 10	Feet from the	North/South line	Feet from the	East/West line	County
*Dedicated Acreage 321.22	*Joint or Infill Y	*Consolidation Code U	*Order No. Non-standard Spacing Order No. R-2948						

NO ALLOWABLE WILL BE ASSIGNED TO THIS COMPLETION UNTIL ALL INTERESTS HAVE BEEN CONSOLIDATED OR A NON-STANDARD UNIT HAS BEEN APPROVED BY THE DIVISION

15

RECEIVED
JAN 25 1999
OIL CON. DIV.
DIST. 3



17 OPERATOR CERTIFICATION

I hereby certify that the information contained herein is true and complete to the best of my knowledge and belief

Jo Ann Johnson
Signature
Jo Ann Johnson
Printed Name

Sr. Property Analyst
Title

12-17-98
Date

18 SURVEYOR CERTIFICATION

I hereby certify that the well location shown on this plat was plotted from field notes of actual surveys made by me or under my supervision, and that the same is true and correct to the best of my belief.

NOVEMBER 8, 1997
Date of Survey

Signature and Seal of Professional Surveyor

NEALE C. EDWARDS
NEW MEXICO
Professional Surveyor
Certificate No. 8857

District I
PO Box 1980, Hobbs, NM 88241-1980

District II
PO Drawer 00, Artesia, NM 88211-0719

District III
1000 Rio Brazos Rd., Aztec, NM 87410

District IV
PO Box 2088, Santa Fe, NM 87504-2088

State of New Mexico
Energy, Minerals & Natural Resources Department

OIL CONSERVATION DIVISION
PO Box 2088
Santa Fe, NM 87504-2088

Form C-102
Revised February 21, 1994
Instructions on back
Submit to Appropriate District Office
State Lease - 4 Copies
Fee Lease - 3 Copies

RECEIVED
PLM
99 JAN 19 PM 2:48

☐ AMENDED REPORT

WELL LOCATION AND ACREAGE DEDICATION PLAN

*API Number 30-039-26065		*Pool Code 71599	*Pool Name Basin Dakota	
*Property Code 016608	*Property Name SAN JUAN 28-7 UNIT			*Well Number 218E
*OGRIID No. 005073	*Operator Name CONOCO, INC.			*Elevation 6817'

¹⁰ Surface Location

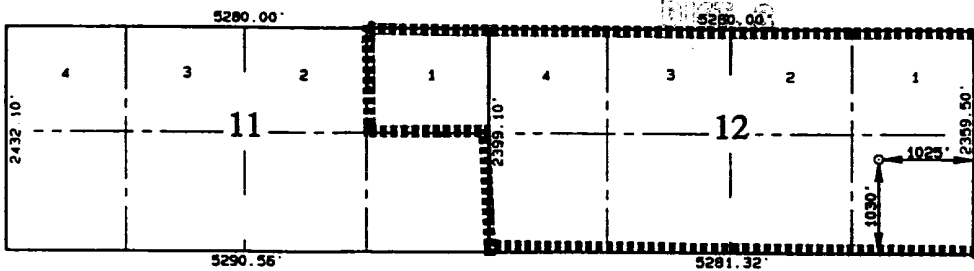
UL or lot no. P	Section 12	Township 28N	Range 7W	Lot 10n	Feet from the 1030	North/South line South	Feet from the 1025	East/West line East	County RIO ARriba
--------------------	---------------	-----------------	-------------	---------	-----------------------	---------------------------	-----------------------	------------------------	----------------------

¹¹ Bottom Hole Location If Different From Surface

UL or lot no.	Section	Township	Range	Lot 10n	Feet from the	North/South line	Feet from the	East/West line	County
¹² Dedicated Acres 321.22		¹³ Joint or Infill Y		¹⁴ Consolidation Code U		¹⁵ Order No. Non-standard Spacing Order No. R-2948			

NO ALLOWABLE WILL BE ASSIGNED TO THIS COMPLETION UNTIL ALL INTERESTS HAVE BEEN CONSOLIDATED OR A NON-STANDARD UNIT HAS BEEN APPROVED BY THE DIVISION

16



¹⁷ OPERATOR CERTIFICATION

I hereby certify that the information contained herein is true and complete to the best of my knowledge and belief

Jo Ann Johnson
Signature
Jo Ann Johnson
Printed Name
Sr. Property Analyst
Title
12-17-98
Date

¹⁸ SURVEYOR CERTIFICATION

I hereby certify that the well location shown on this plat was plotted from field notes of actual surveys made by me or under my supervision, and that the same is true and correct to the best of my belief.

NOVEMBER 8, 1997
Date of Survey

Signature and Seal of Professional Surveyor

NEALE C. EDWARDS
NEW MEXICO
PROFESSIONAL SURVEYOR
Certificate Number

