

UNITED STATES
DEPARTMENT OF THE INTERIOR
BUREAU OF LAND MANAGEMENT

APPLICATION FOR PERMIT TO DRILL OR DEEPEN

1a. TYPE OF WORK

DRILL ☒DEEPEN ☐

b. TYPE OF WELL

OIL
WELL ☐GAS
WELL ☒

OTHER

SINGLE
ZONE ☒MULTIPLE
ZONE ☐

2. NAME OF OPERATOR

Conoco Inc.

a. ADDRESS AND TELEPHONE NO

10 Desta Dr. Ste 430E, Midland, Tx. 79705-4500

4. LOCATION OF WELL (Report location clearly and in accordance with any State requirements)

At surface

1350' FSL & 2330' FEL

At proposed prod. zone

1350' FSL & 2330' FEL

14. DISTANCE IN MILES AND DIRECTION FROM NEAREST TOWN OR POST OFFICE*

5. DISTANCE FROM PROPOSED*

LOCATION TO NEAREST
PROPERTY OR LEASE LINE, FT.
(Also to nearest drlg. unit line, if Any)

16. NO OF ACRES IN LEASE

8. DISTANCE FROM PROPOSED LOCATION*

TO NEAREST WELL, DRILLING, COMPLETED,
OR APPLIED FOR, ON THIS LEASE, FT.

19. PROPOSED DEPTH

7640'

17. NO. OF ACRES ASSIGNED
TO THIS WELL

E/320 87 E/320 87

21. ELEVATIONS (Show whether DF, RT, GR, etc)

6190' GR

This section is subject to Federal and
procedural revision pursuant to 43 CFR 3165.3
and appeal pursuant to 43 CFR 3165.4.

22. APPROX. DATE WORK WILL START*

6/1/99

23

PROPOSED CASING AND CEMENTING PROGRAM

SIZE OF HOLE	GRADE, SIZE OF CASING	WEIGHT PER FOOT	SETTING DEPTH	QUANTITY OF CEMENT
12-1/4"	H-40, 9-5/8"	32.3#	250'	150 sxs, circ.
8-3/4"	J-55, 7"	20#	3114'	420 sxs, circ.
6-1/4"	J/K-55, 4-1/2"	9.5#	7330'	553 sxs, toc @ 2900'

It is proposed to drill a vertical wellbore to be downhole commingled in the Blanco Mesaverde and Basin Dakota Pools (DHC # 2244 - see referenced description) An NOS was filed 10/2/98. The well will be drilled and equipped according to the following additional attachments:

1. Well Location & Acreage Dedication Plat (C-102).
2. Proposed Well Plan Outline.
3. Cementing Plan.
4. Blowout Preventer Hookup.
5. Surface Use Plan including temporary pipeline tie specifications and Production Facility layout.

APD/ROW

This application includes ROW's for the well pad, access road, cathodic protection and pipeline.

DRILLING OPERATIONS AUTHORIZED ARE
SUBJECT TO COMPLIANCE WITH ATTACHED
"GENERAL REQUIREMENTS"

IN ABOVE SPACE DESCRIBE PROPOSED PROGRAM: If proposal is to deepen give data on present productive zone and proposed new productive zone. If proposal is to drill or deepen directionally, give pertinent data on subsurface locations and measured and true vertical depths. Give blowout preventer program, if any.

24.

SIGNED

TITLE

Jo Ann Johnson

Sr. Property Analyst

DATE

May 5, 1999

(This space for Federal or State office use)

PERMIT NO

APPROVAL DATE

Application approval does not warrant or certify that the applicant holds legal or equitable title to those rights in the subject lease which would entitle the applicant to conduct operations thereon.

CONDITIONS OF APPROVAL, IF ANY:

APPROVED BY

TITLE

P. L. King

DATE

7-9-99

*See Instructions On Reverse Side

Title 18 U.S.C. Section 1001, makes it a crime for any person knowingly and willfully to make to any department or agency of the United States any false, fictitious or fraudulent statements or representations as to any matter within its jurisdiction.

OLD C104 FOR DAKOTA NSL

NMOCD

District I
PO Box 1980, Hobbs, NM 88241-1980

District II
PO Drawer 00, Artesia, NM 88211-0719

District III
1000 Rio Brazos Rd., Aztec, NM 87410

District IV
PO Box 2088, Santa Fe, NM 87504-2088

State of New Mexico
Energy, Minerals & Natural Resources Department

OIL CONSERVATION DIVISION
PO Box 2088
Santa Fe, NM 87504-2088

Form C-102
Revised February 21, 1994

Instructions on back
Submit to Appropriate District Office
State Lease - 4 Copies
Fee Lease - 3 Copies

50127-5 AM 8/26 AMENDED REPORT

WELL LOCATION AND ACREAGE DEDICATION PLAT

API Number 30-039-26173		Pool Code 72319 / 71599	Pool Name BLANCO MESAVERDE / BASIN DAKOTA
Property Code 016608	Property Name SAN JUAN 28-7 UNIT		Well Number 225E
OGRID No. 005073	Operator Name CONOCO, INC.		Elevation 6190'

10 Surface Location

UL or lot no. J	Section 34	Township 28N	Range 7W	Lot Idn	Feet from the 1350	North/South line SOUTH	Feet from the 2330	East/West line EAST	County RIO ARriba
---------------------------	----------------------	------------------------	--------------------	---------	------------------------------	----------------------------------	------------------------------	-------------------------------	-----------------------------

11 Bottom Hole Location If Different From Surface

UL or lot no.	Section	Township	Range	Lot Idn	Feet from the	North/South line	Feet from the	East/West line	County
Dedicated Acres 321.87 321.87					Joint or Infill	Consolidation Code	Order No. R-10987-A		

NO ALLOWABLE WILL BE ASSIGNED TO THIS COMPLETION UNTIL ALL INTERESTS HAVE BEEN CONSOLIDATED OR A NON-STANDARD UNIT HAS BEEN APPROVED BY THE DIVISION

15	5280.00'	5221.92'	4	3	2	1	5280.00'	1350'	2330'	5332.80'	17 OPERATOR CERTIFICATION
											I hereby certify that the information contained herein is true and complete to the best of my knowledge and belief
										Signature <i>Mike L. Mankin</i> Printed Name Mike L. Mankin Title Right-Of-Way Agent Date 1-11-99	
										18 SURVEYOR CERTIFICATION	
										I hereby certify that the well location shown on this plat was plotted from field notes of actual surveys made by me or under my supervision, and that the same is true and correct to the best of my belief.	
										Date of Survey OCTOBER 19, 1998	
										Signature and Seal of Professional Surveyor 	
										Certificate Number 6857	

District I
PO Box 1980, Hobbs, NM 88241-1980

District II
PO Drawer 00, Artesia, NM 88211-0719

District III
1000 Rio Brazos Rd., Aztec, NM 87410

District IV
PO Box 2088, Santa Fe, NM 87504-2088

State of New Mexico
Energy, Minerals, & Natural Resources Department

OIL CONSERVATION DIVISION
PO Box 2088
Santa Fe, NM 87504-2088

Form C-102
Revised February 21, 1994
Instructions on back
Submit to Appropriate District Office
State Lease - 4 Copies
Fee Lease - 3 Copies

AMENDED REPORT

WELL LOCATION AND ACREAGE DEDICATION PLAT

API Number 30-039-26173		Pool Code 72319 / 71599		Pool Name BLANCO MESAVERDE / BASIN DAKOTA	
Property Code 016608		Property Name SAN JUAN 28-7 UNIT			Well Number 225E
OGRIID No. 005073		Operator Name CONOCO, INC.			Elevation 6190'

10 Surface Location

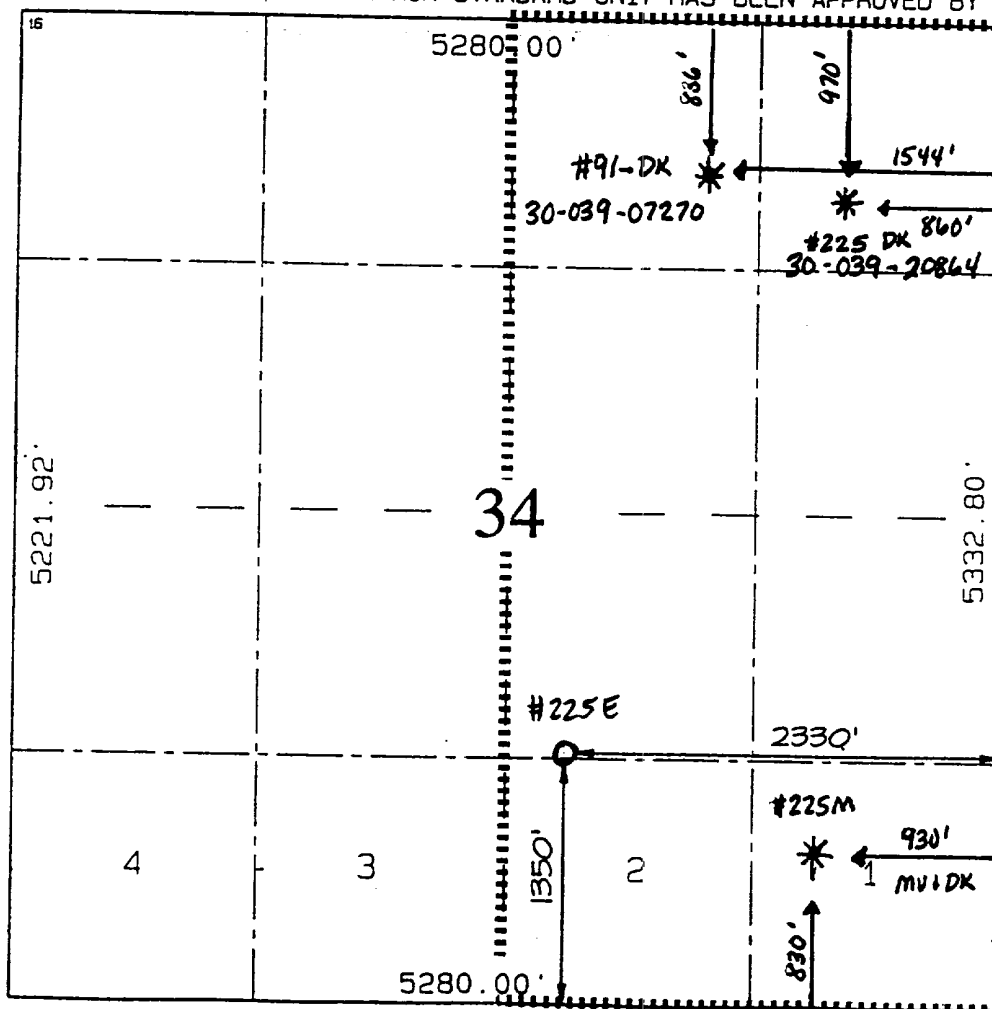
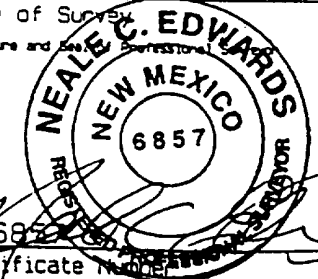
UL or lot no. J	Section 34	Township 28N	Range 7W	Lot Ion	Feet from the 1350	North/South line SOUTH	Feet from the 2330	East/West line EAST	County RIO ARriba
---------------------------	----------------------	------------------------	--------------------	---------	------------------------------	----------------------------------	------------------------------	-------------------------------	-----------------------------

11 Bottom Hole Location If Different From Surface

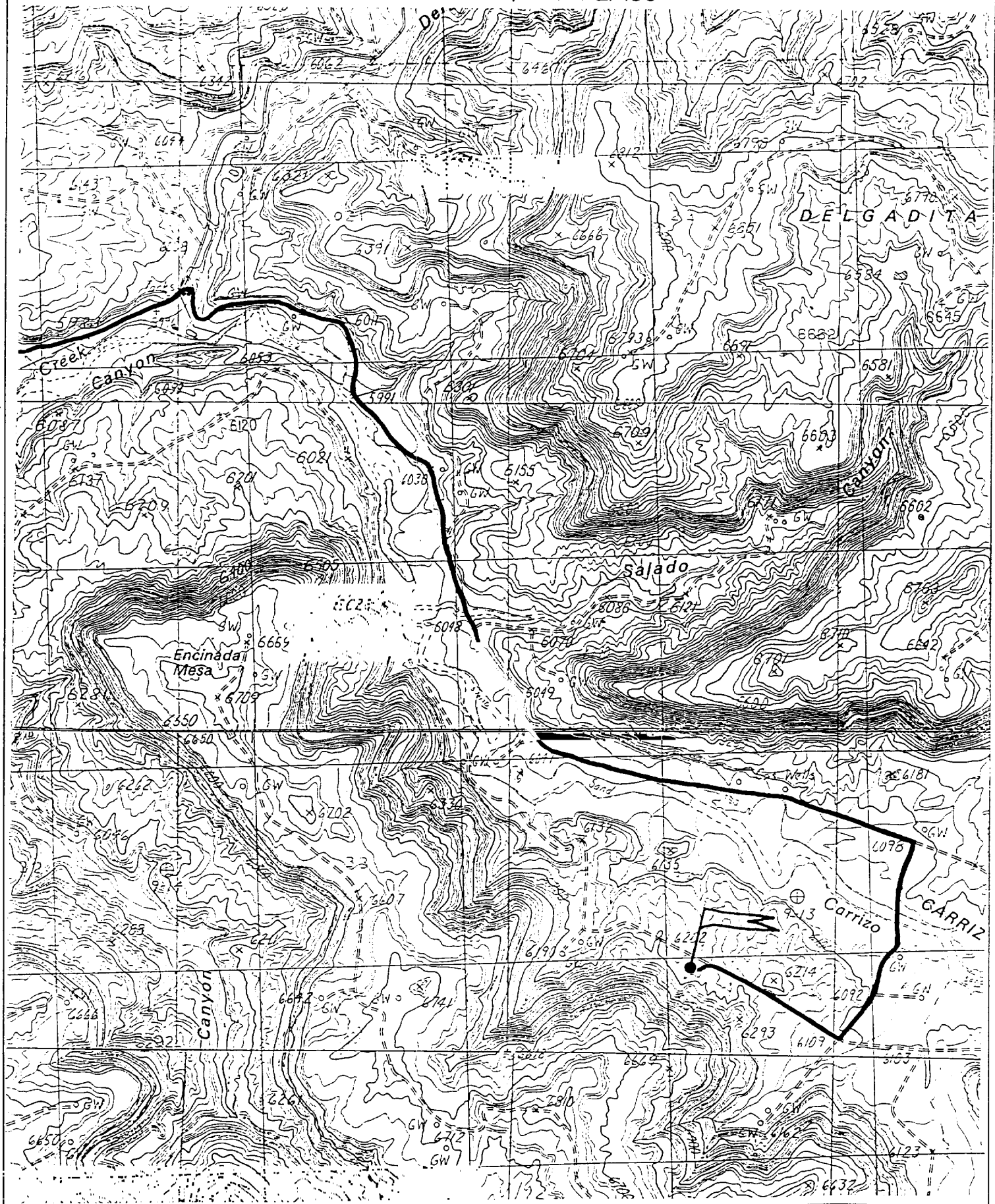
UL or lot no.	Section	Township	Range	Lot Ion	Feet from the	North/South line	Feet from the	East/West line	County
---------------	---------	----------	-------	---------	---------------	------------------	---------------	----------------	--------

Dedicated Acres		Joint or Infill	Consolidation Code	Order No.
-----------------	--	-----------------	--------------------	-----------

NO ALLOWABLE WILL BE ASSIGNED TO THIS COMPLETION UNTIL ALL INTERESTS HAVE BEEN CONSOLIDATED OR A NON-STANDARD UNIT HAS BEEN APPROVED BY THE DIVISION

		17 OPERATOR CERTIFICATION I hereby certify that the information contained herein is true and complete to the best of my knowledge and belief. Signature <i>Mike L. Mankin</i> Printed Name Mike L. Mankin Title Right-Of-Way Agent Date 1-11-99	
		18 SURVEYOR CERTIFICATION I hereby certify that the well location shown on this plat was plotted from field notes of actual surveys made by me or under my supervision, and that the same is true and correct to the best of my belief. OCTOBER 19, 1998 Date of Survey Signature and Seal of Surveyor  Certificate Number 6857	

CONOCO, INC. SAN JUAN 28-7 UNIT #225E
1350' FSL & 2330' FEL, SECTION 34, T28N, R7W, N.M.P.M.
RIO ARriba COUNTY, NEW MEXICO



EMERGENCY RESPONSE AREA

CONOCO, INC. SAN JUAN 28-7 UNIT #225E

1350' FSL & 2330' FEL, SECTION 34, T28N, R7W, N.M.P.M.
RIO ARriba COUNTY, NEW MEXICO

