

UNITED STATES
DEPARTMENT OF THE INTERIOR
BUREAU OF LAND MANAGEMENT

RECEIVED
BLM

FORM APPROVED
OMB NO. 1004-0136
Expires February 28, 1995

APPLICATION FOR PERMIT TO DRILL OR DEEPEN

1a. TYPE OF WORK

DRILL ☒

DEEPEN ☐

b. TYPE OF WELL

OIL WELL ☐

GAS WELL ☒ OTHER

SINGLE ZONE ☒

MULTIPLE ZONE ☒

2. NAME OF OPERATOR

Conoco Inc.

3. ADDRESS AND TELEPHONE NO.

10 Desta Drive, Suite 649W, Midland, TX 79701-4113-686-5515

4. LOCATION OF WELL (Report location clearly and in accordance with any State requirements*)

At surface

1430' FSL & 1190' FWL

At proposed prod. Zone

1430' FSL & 1190' FWL

14. DISTANCE IN MILES AND DIRECTION FROM NEAREST TOWN OR POST OFFICE

15. DISTANCE FROM PROPOSED*

LOCATION TO NEAREST
PROPERTY OR LEASE LINE, FT.
(Also to nearest drlg. Unit line, if any)

6. NO. OF ACRES IN LEASE

320

17. NO. OF ACRES ASSIGNED
TO THIS WELL

18. DISTANCE FROM PROPOSED LOCATION*
TO NEAREST WELL, DRILLING COMPLETED,
OR APPLIED FOR, ON THIS LEASE, FT.

9. PROPOSED DEPTH

7598'

20. ROTARY OR CABLE TOOLS

Rotary

21. ELEVATIONS (Show whether DF, RT, GR, etc.)

6228' GR and appeal pursuant to 43 CFR 3105.4

22. APPROX. DATE WORK WILL START*

8/15/99

PROPOSED CASING AND CEMENTING PROGRAM

SIZE OF HOLE	GRADE, SIZE OF CASING	WEIGHT PER FOOT	SETTING DEPTH	QUANTITY OF CEMENT
12 1/4"	K-55; 9 5/8"	36#	250' ✓	150 sxs, circ.
8 3/4"	K-55; 7"	20#	3098' ✓	418 sxs, circ.
6 1/4"	K-55; 4 1/2"	9.5#	2898'-7298'	553 sxs, toc @ 2898'

It is proposed to drill a vertical wellbore to be downhole commingled in the Blanco Mesaverde and Basin Dakota Pools following the acquisition of sufficient production test data for allocation purposes. A downhole commingling application has been filed with the BLM and OCD. (DHC # 2206). An NOS was filed 10/2/98. The well will be drilled and equipped according to the following additional attachments:

1. Well Location & Acreage Dedication Plat (C-102).
2. Proposed Well Plan Outline.
3. Cementing Plan.
4. Blowout Preventer Hookup.
5. Surface Use Plan including temporary pipeline tie specifications.
6. Production Facility Layout.

DRILLING OPERATIONS AUTHORIZED ARE
SUBJECT TO COMPLIANCE WITH ATTACHED
"GENERAL REQUIREMENTS"

This application includes ROW's for the well pad, cathodic protection, access road and pipeline. The pipe-wall thickness is .156 and the pipe-wall strength is 42,000# yield.

IN ABOVE SPACE DESCRIBE PROPOSED PROGRAM: If proposal is to deepen give data on present productive zone and proposed new productive zone. If proposal is to drill or deepen directionally, give pertinent data on subsurface locations and measured and true vertical depths. Give blowout preventer program, if any.

25

SIGNED

De Ann DeHaven

TITLE Sr. Property Analyst

DATE 7/9/99

(This space for Federal or State office Use)

PERMIT NO.

APPROVAL DATE

Application approval does not warrant or certify that the applicant holds legal or equitable title to those rights in the subject lease which would entitle the applicant to conduct operations thereon.

CONDITIONS OF APPROVAL, IF ANY

APPROVED BY

/s/ Charlie Beecham

TITLE

DATE

MAY 12 2000

*See Instructions On Reverse Side

Title 18 U.S.C. Section 1001, makes it a crime for any person knowingly and willfully to make to any department or agency of the United States any false, fictitious or fraudulent statements or representations as to any matter within its jurisdiction.

OK JAP CTP

NMOCD

District I
PO Box 1980, Hobbs, NM 88241-1980

District II
PO Drawer 00, Artesia, NM 88211-0719

District III
1000 Rio Brazos Rd., Aztec, NM 87410

District IV
PO Box 2088, Santa Fe, NM 87504-2088

State of New Mexico
Energy, Minerals & Natural Resources Department

Form C-102
Revised February 21, 1994

OIL CONSERVATION DIVISION
PO Box 2088
Santa Fe, NM 87504-2088

RECEIVED
Submitted to Appropriate District Office
State Lease - 4 Copies
Fee Lease - 3 Copies

JUL 16 PM 1:14

AMENDED REPORT

070 FACILITATION, NM

WELL LOCATION AND ACREAGE DEDICATION PLAT

*API Number 30039-26505		*Pool Code 72319 / 71599		*Pool Name BLANCO MESAVERDE / BASIN DAKOTA	
*Property Code 016608		*Property Name SAN JUAN 28-7 UNIT			*Well Number 192M
*GRID No. 005073		*Operator Name CONOCO, INC.			*Elevation 6228'

10 Surface Location

UL or lot no	Section	Township	Range	Lot Idn	Feet from the	North/South line	Feet from the	East/West line	County
L	33	28N	7W		1430	SOUTH	1190	WEST	RIO ARriba

11 Bottom Hole Location If Different From Surface

UL or lot no.	Section	Township	Range	Lot Idn	Feet from the	North/South line	Feet from the	East/West line	County

12 Dedicated Acres 316 w/2 320	13 Joint or Infill	14 Consolidation Code	15 Order No.
--------------------------------------	--------------------	-----------------------	--------------

NO ALLOWABLE WILL BE ASSIGNED TO THIS COMPLETION UNTIL ALL INTERESTS HAVE BEEN CONSOLIDATED
OR A NON-STANDARD UNIT HAS BEEN APPROVED BY THE DIVISION

				<p>17 OPERATOR CERTIFICATION</p> <p>I hereby certify that the information contained herein is true and complete to the best of my knowledge and belief.</p> <p>Signature: <u>Mike L. Mankin</u></p> <p>Printed Name: <u>Mike L. Mankin</u></p> <p>Title: <u>Right-Of-Way Agent</u></p> <p>Date: <u>6-16-99</u></p>	
<p>18 SURVEYOR CERTIFICATION</p> <p>I hereby certify that the well location shown on this plat was plotted from field notes of actual surveys made by me or under my supervision, and that the same is true and correct to the best of my belief.</p> <p>OCTOBER 21, 1998</p> <p>Date of Survey: <u>OCTOBER 21, 1998</u></p> <p>Signature and Seal of Professional Surveyor: <u>NEALE C. EDWARDS</u></p> <p>Certificate Number: <u>6857</u></p>					

District I
PO Box 1980, Hobbs, NM 88241-1980

District II
PO Drawer DD, Artesia, NM 88211-0719

District III
1000 Rio Brazos Rd. Aztec, NM 87410

District IV
PO Box 2088, Santa Fe, NM 87504-2088

State of New Mexico
Energy, Minerals & Natural Resources Department

OIL CONSERVATION DIVISION
PO Box 2088,
Santa Fe, NM 87504-2088

Form C-102

Revised February 21, 1994

instructions on back

Submit to Appropriate District Office

State Lease - 4 Copies

Fee Lease - 3 Copies

070 FARMINGTON, NM

☐ AMENDED REPORT

WELL LOCATION AND ACREAGE DEDICATION PLAT

API Number 30-639-26205		2 Pool Code 72319/ 71599	3 Pool Name Blanco Mesaverde/Basin Dakota
4 Property Code 016608	5 Property Name San Juan 28-7 Unit		6 Well Number # 192 M
7 OGRID No. 005073	8 Operator Name Conoco Inc., 10 Desta Drive, Ste. 100W, Midland, TX 79705-4500		9 Elevation 6243'

10 Surface Location

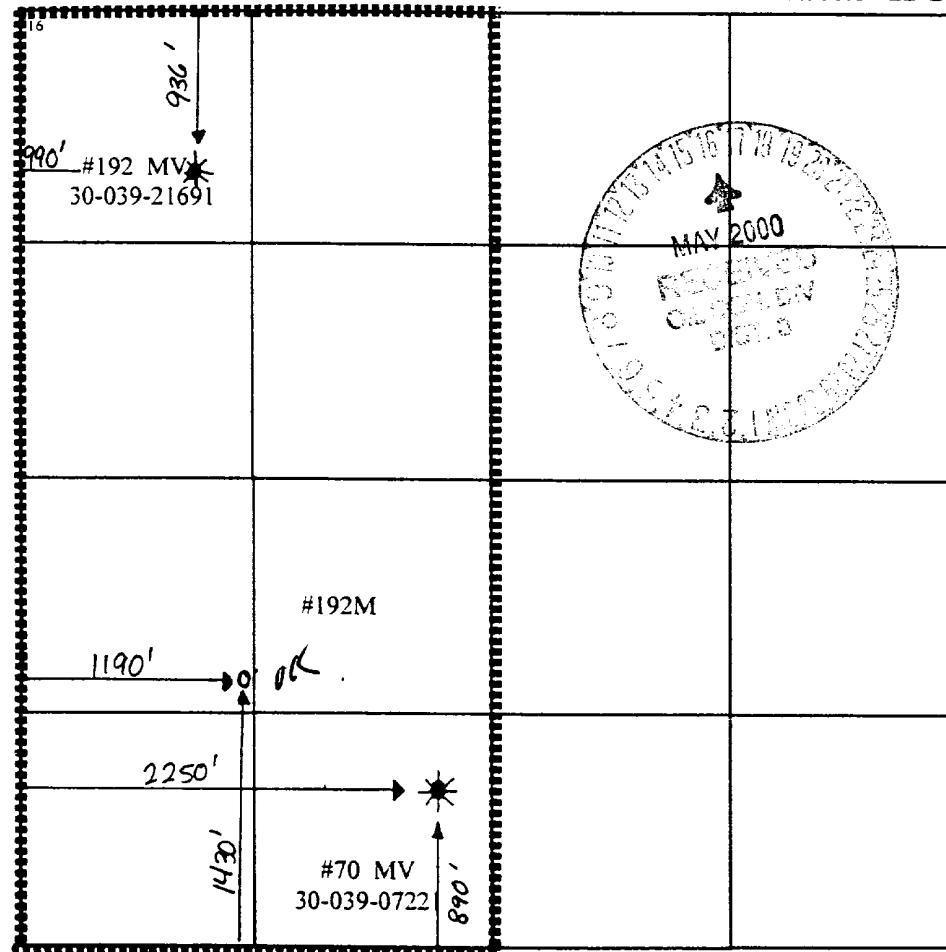
UL or lot no.	Section	Township	Range	Lot Idn	Feet from the	North/South line	Feet from the	East/West line	County
L	33	28N	7W		1430'	South	1190	West	Rio Arriba

11 Bottom Hole Location If Different From Surface

UL or lot no.	Section	Township	Range	Lot Idn	Feet from the	North/South line	Feet from the	East/West line	County

12 Dedicated Acres 320	13 Joint or Infill	14 Consolidation Code	15 Order No. R - 10987 - A
---------------------------	--------------------	-----------------------	-------------------------------

NO ALLOWABLE WILL BE ASSIGNED TO THIS COMPLETION UNTIL ALL INTERESTS HAVE BEEN CONSOLIDATED
OR A NON-STANDARD UNIT HAS BEEN APPROVED BY THE DIVISION



17 OPERATOR CERTIFICATION

I hereby certify that the information contained herein is true and complete to the best of my knowledge and belief

Kay Maddox
Signature
Kay Maddox

Printed Name
Regulatory Agent

Title
February 8, 1999

Date

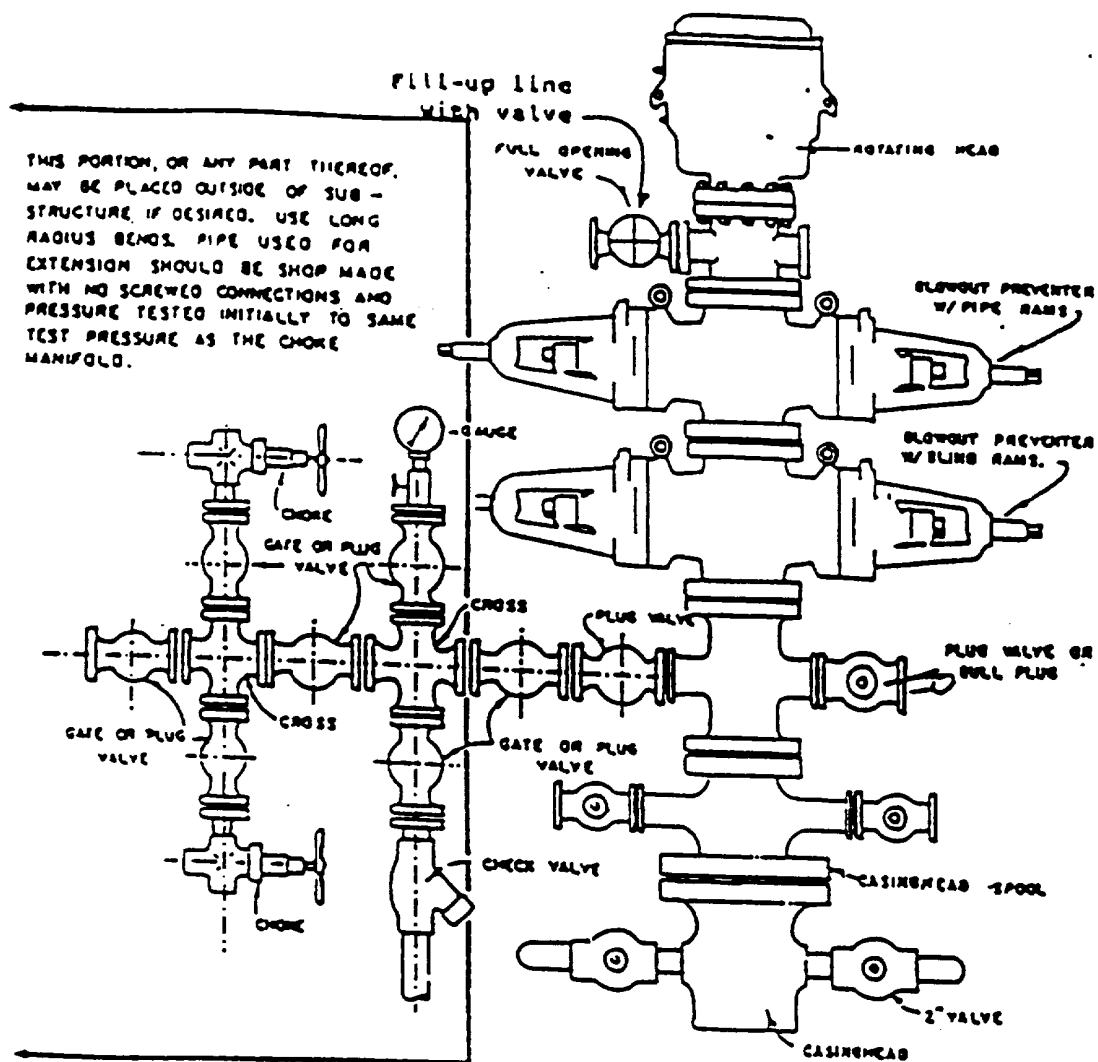
18 SURVEYOR CERTIFICATION

I hereby certify that the well location shown on this plat was plotted from field notes of actual surveys made by me or under my supervision, and that the same is true and correct to the best of my belief.

Date of Survey

Signature and Seal of Professional Surveyor:

Certificate Number



BLOWOUT PREVENTER HOOKUP

Drilling contractors used in the San Juan Basing supply 3000 psi equipment, but cannot provide annular preventors because of sub-structure limitations. Maximum anticipated surface pressures for this well will not exceed the working pressure of the proposed BOP system. Please see the attached BOP diagram details 2000 psi equipment according to Onshore Order No. 2 even though the equipment will test to 3000 psi. The 2000 psi system allows deletion of the annular preventor and fulfills your requirements (note diagram No. 1). In addition, the following equipment will comprise the 2000 psi system:

1. Two rams with one blind and one pipe ram.
2. Kill line (2 inch maximum).
3. One kill line valve.
4. One choke line valve.
5. Two chokes (reference diagram No. 1).
6. Upper kelly cock valve with handle.
7. Safety valve and subs to fit all drill strings in use.
8. Two-inch minimum choke line.
9. Pressure gauge on choke manifold.
10. Fill-up line above the upper most preventor.
11. Rotating head.

CONOCO, INC. SAN JUAN 28-7 UNIT #192M
1430' FSL & 1190' FWL, SECTION 33, T28N, R7W, N.M.P.M.
RIO ARriba COUNTY, NEW MEXICO

