

State of New Mexico
Energy, Minerals and Natural Resources Department
Oil Conservation Division

Sundry Notices and Reports on Wells

1. Type of Well
GAS

2. Name of Operator

**BURLINGTON
RESOURCES**

OIL & GAS COMPANY

3. Address & Phone No. of Operator

PO Box 4289, Farmington, NM 87499 (505) 326-9700

4. Location of Well, Footage, Sec., T, R, M

1515' FNL, 2210' FWL, Sec. 35, T-28-N, R-5-W, NMPM, Rio Arriba County

API # (assigned by OCD)
30-039-26260

5. Lease Number
Fee

6. State Oil & Gas Lease #

7. Lease Name/Unit Name

San Juan 28-5 Unit

8. Well No.
53B

9. Pool Name or Wildcat
Blanco Mesaverde

10. Elevation:

Type of Submission

☒ Notice of Intent
☐ Subsequent Report
☐ Final Abandonment

Type of Action

☐ Abandonment
☐ Recompletion
☐ Plugging Back
☐ Casing Repair
☐ Altering Casing
☒ Other -
☒ Change of Plans
☐ New Construction
☐ Non-Routine Fracturing
☐ Water Shut off
☐ Conversion to Injection

13. Describe Proposed or Completed Operations

The subject well has been moved from 2165' FNL, 1760' FWL. A new C-102 plat is attached.



SIGNATURE Angela Cole (CDS) Regulatory Supervisor March 7, 2000

no
(This space for State Use)

Approved by ORIGINAL SIGNED BY CHARLIE T. PERRY Title DEPUTY OIL & GAS INSPECTOR, DIST. #8 Date MAR - 9 2000

District I:
PO Box 1980, Hobbs, NM 88241-1980

District II:
PO Drawer 00, Artesia, NM 88211-0719

District III:
1000 Rio Brazos Rd., Aztec, NM 87410

District IV:
PO Box 2088, Santa Fe, NM 87504-2088

State of New Mexico
Energy, Minerals & Natural Resources Department

OIL CONSERVATION DIVISION
PO Box 2088
Santa Fe, NM 87504-2088

Form C-102
Revised February 21, 1994
Instructions on back
Submit to Appropriate District Office
State Lease - 4 Copies
Fee Lease - 3 Copies

☐ AMENDED REPORT

WELL LOCATION AND ACREAGE DEDICATION PLAT

*API Number 30-039-26260		*Pool Code 72319		*Pool Name Blanco Mesaverde	
*Property Code 7460		*Property Name SAN JUAN 28-5 UNIT			*Well Number 53B
*GRID No. 14538		*Operator Name BURLINGTON RESOURCES OIL & GAS COMPANY			*Elevation 6671'

¹⁰ Surface Location

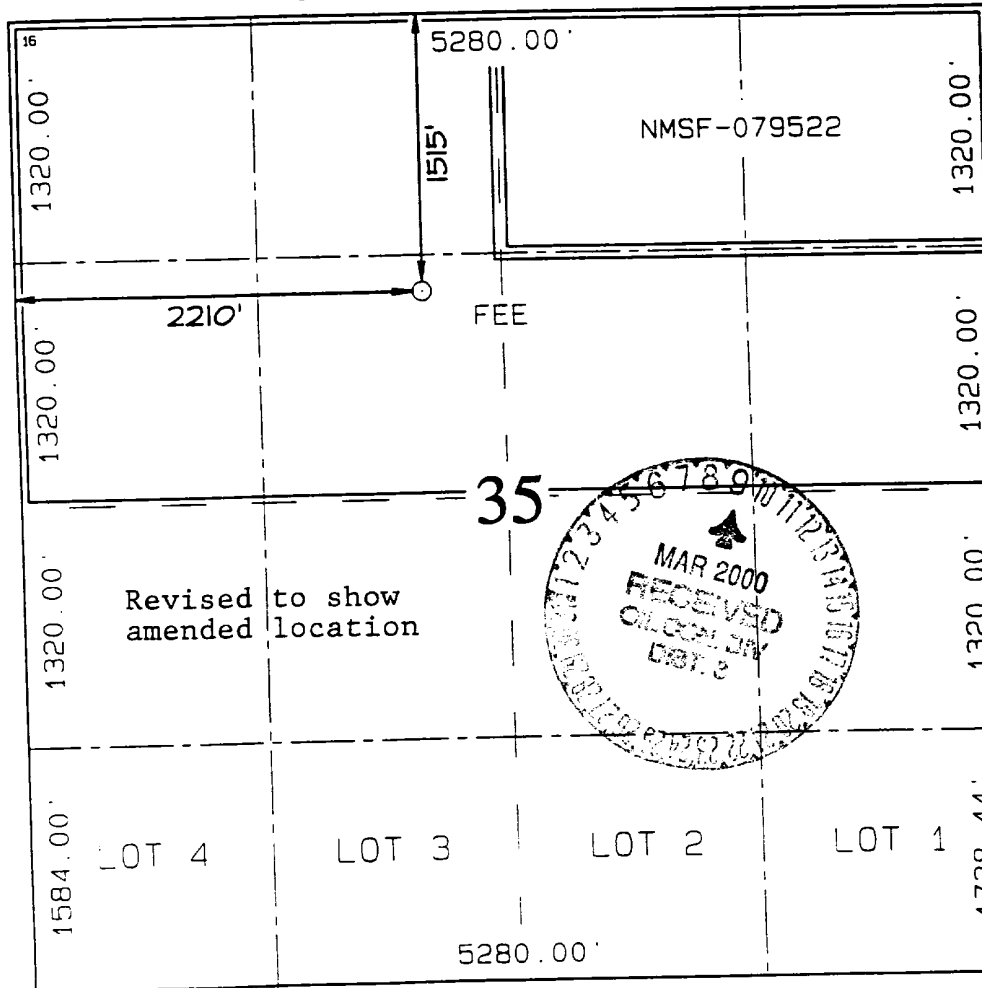
UL or lot no.	Section	Township	Range	Lot 10n	Feet from the	North/South line	Feet from the	East/West line	County
F	35	28N	5W		1515	NORTH	2210	WEST	RIO ARriba

¹¹ Bottom Hole Location If Different From Surface

UL or lot no.	Section	Township	Range	Lot 10n	Feet from the	North/South line	Feet from the	East/West line	County

¹² Dedicated Acres N/320	¹³ Joint or Infill	¹⁴ Consolidation Code	¹⁵ Order No.
---	-------------------------------	----------------------------------	-------------------------

NO ALLOWABLE WILL BE ASSIGNED TO THIS COMPLETION UNTIL ALL INTERESTS HAVE BEEN CONSOLIDATED
OR A NON-STANDARD UNIT HAS BEEN APPROVED BY THE DIVISION



¹⁷ OPERATOR CERTIFICATION

I hereby certify that the information contained herein is true and complete to the best of my knowledge and belief.

Peggy Cole
Signature

Peggy Cole
Printed Name

Regulatory Supervisor
Title

3-7-00
Date

¹⁸ SURVEYOR CERTIFICATION

I hereby certify that the well location shown on this was plotted from field notes of actual surveys made by or under my supervision, and that the same is true and correct to the best of my belief.

FEBRUARY 17, 2000
Date of Survey

Signature and Seal

NEALE C. EDWARDS
NEW MEXICO
6857
Professional Surveyor

Certificate Number **6857**