

District I
1625 N. French Dr., Hobbs, NM 88240
District II
811 South First, Artesia, NM 88210
District III
1000 Rio Brazos Rd., Aztec, NM 87410
District IV
2040 South Pacheco, Santa Fe, NM 87505

State of New Mexico
Energy, Minerals & Natural Resources Department

OIL CONSERVATION DIVISION
2040 South Pacheco
Santa Fe, NM 87505

Form C-102
Revised August 15, 2000

Submit to Appropriate District Office
State Lease - 4 Copies
Fee Lease - 3 Copies

☐ AMENDED REPORT

WELL LOCATION AND ACREAGE DEDICATION PLAT

1 API Number 30-039-26452		2 Pool Code 71599		3 Pool Name Basin Dakota	
4 Property Code San Juan 28-7 Unit		5 Property Name		6 Well Number 250 M	
7 OGRID No. 005073		8 Operator Name Conoco Inc.		9 Elevation 6260 GR	

10 Surface Location

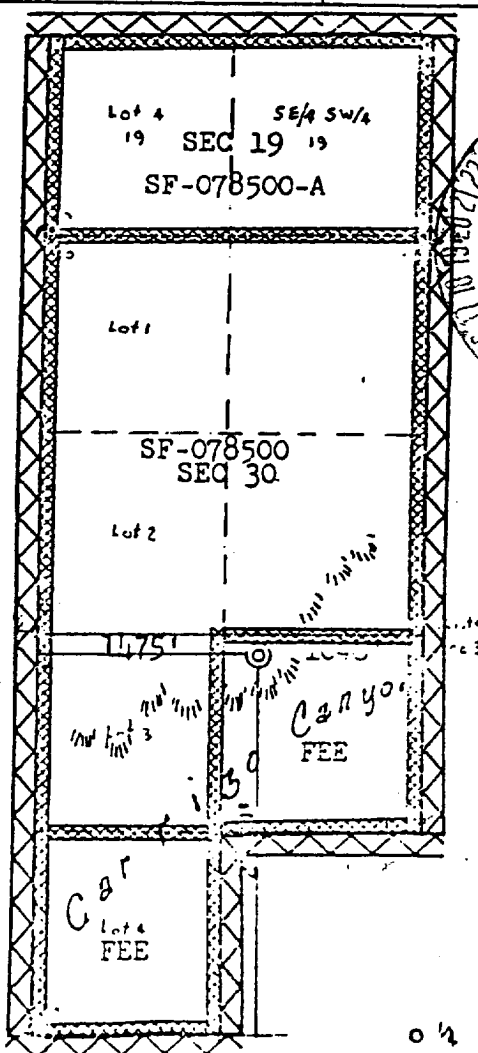
UL or lot no. C	Section 30	Township 28N	Range 7W	Lot Idn	Feet from the 1120	North/South line North	Feet from the 1825	East/West line West	County Rio Arriba
--------------------	---------------	-----------------	-------------	---------	-----------------------	---------------------------	-----------------------	------------------------	----------------------

11 Bottom Hole Location If Different From Surface

UL or lot no.	Section	Township	Range	Lot Idn	Feet from the	North/South line	Feet from the	East/West line	County
---------------	---------	----------	-------	---------	---------------	------------------	---------------	----------------	--------

12 Dedicated Acres 342.17	13 Joint or Infill I	14 Consolidation Code	15 Order No. R-2948
------------------------------	-------------------------	-----------------------	------------------------

NO ALLOWABLE WILL BE ASSIGNED TO THIS COMPLETION UNTIL ALL INTERESTS HAVE BEEN CONSOLIDATED OR A NON-STANDARD UNIT HAS BEEN APPROVED BY THE DIVISION



17 OPERATOR CERTIFICATION

I hereby certify that the information contained herein is true and complete to the best of my knowledge and belief.

Yolanda Perez
Signature

Yolanda Perez
Printed Name

Sr. Regulatory Analyst
Title

11/15/2001
Date

11/15/2001
Date

18 SURVEYOR CERTIFICATION

I hereby certify that the well location shown on this plat was plotted from field notes of actual surveys made by me or under my supervision, and that the same is true and correct to the best of my belief.

Date of Survey
Signature and Seal of Professional Surveyor:

Certificate Number