

UNITED STATES
DEPARTMENT OF THE INTERIOR
BUREAU OF LAND MANAGEMENT

FORM APPROVED
OMB NO. 1004-0136
Expires February 28, 1995

APPLICATION FOR PERMIT TO DRILL OR DEEPEN

1a. TYPE OF WORK

DRILL ☒

DEEPEN ☐

b. TYPE OF WELL

OIL WELL ☐

GAS WELL ☒

OTHER

SINGLE ZONE ☒

MULTIPLE ZONE ☐

2. NAME OF OPERATOR

Conoco Inc.

3. ADDRESS AND TELEPHONE NO.

10 Desta Drive, Suite 649W, Midland, TX 79705; 915/686-5515

4. LOCATION OF WELL (Report location clearly and in accordance with any State requirements*)

At surface

870' FNL & 1055' FWL

At proposed prod. Zone

870' FNL & 1055' FWL

14. DISTANCE IN MILES AND DIRECTION FROM NEAREST TOWN OR POST OFFICE*

15. DISTANCE FROM PROPOSED*

LOCATION TO NEAREST

PROPERTY OR LEASE LINE, FT.

(Also to nearest drlg. Unit line, if any)

18. DISTANCE FROM PROPOSED LOCATION*
TO NEAREST WELL, DRILLING, COMPLETED,
OR APPLIED FOR, ON THIS LEASE, FT.

21. ELEVATIONS (Show whether DF, RT, GR, etc.)

6. NO. OF ACRES IN LEASE

3097'

17. NO. OF ACRES ASSIGNED
TO THIS WELL

160 NW/4

20. ROTARY OR CABLE TOOLS
Rotary

22. APPROX. DATE WORK WILL START*

9/15/00

This action is subject to technical and procedural review pursuant to 43 CFR 316.3 and appeal pursuant to 43 CFR 316.4.

PROPOSED CASING AND CEMENTING PROGRAM

DRILLING OPERATIONS AUTHORIZED ARE
SUBJECT TO COMPLIANCE WITH ATTACHED
"GENERAL REQUIREMENTS"

SIZE OF HOLE	GRADE, SIZE OF CASING	WEIGHT PER FOOT	SETBACK TO COMPLIANCE WITH ATTACHED "GENERAL REQUIREMENTS"
8 3/4"	J-55; 7"	20#	250'
6 1/4"	J-55; 4 1/2"	10.5#	3097'

It is proposed to drill a vertical wellbore in the South Blanco Pictured Cliffs Pool. An NOS was filed 4/26/00. The well will be drilled and equipped according to the following additional attachments:

1. Well Location & Acreage Dedication Plat (C-102).
2. Proposed Well Plan Outline.
3. Cementing Plan.
4. Blowout Preventer Hookup.
5. Surface Use Plan including temporary pipeline tie specifications.
6. Production Facility Layout.

APD/ROW

This application includes ROW's for the well pad, and pipeline. The pipe-wall thickness is .156 and the pipe-wall strength is 42,000# yield.

IN ABOVE SPACE DESCRIBE PROPOSED PROGRAM: If proposal is to deepen give data on present productive zone and proposed new productive zone. If proposal is to drill or deepen directionally, give pertinent data on subsurface locations and measured and true vertical depths. Give blowout preventer program, if any.

SIGNED See next page
(This space for Federal or State office Use)

TITLE Sr. Property Analyst

DATE 8/4/00

PERMIT NO. _____

APPROVAL DATE _____

Application approval does not warrant or certify that the applicant holds legal or equitable title to those rights in the subject lease which would entitle the applicant to conduct operations thereon.

CONDITIONS OF APPROVAL, IF ANY:

APPROVED BY _____

/s/ Jim Lovato

TITLE _____

DATE _____

NOV - 1 2000

*See Instructions On Reverse Side

Title 18 U.S.C. Section 1001, makes it a crime for any person knowingly and willfully to make to any department or agency of the United States any false, fictitious or fraudulent statements or representations as to any matter within its jurisdiction.

NMOC

**UNITED STATES
DEPARTMENT OF THE INTERIOR
BUREAU OF LAND MANAGEMENT**

FORM APPROVED
OMB NO. 1004-0136
Expires February 28, 1995

APPLICATION FOR PERMIT TO DRILL OR DEEPEN

1. TYPE OF WORK DRILL <input checked="" type="checkbox"/> DEEPEN <input type="checkbox"/>		3. LEASE DESIGNATION AND SERIAL NO. SF-078498	
2. NAME OF OPERATOR Conoco Inc.		4. IF INDIAN, ALLOTTEE OR TRIBE NAME	
3. ADDRESS AND TELEPHONE NO. 10 Deste Drive, Suite 649W, Midland, TX 79705; 915/686-5515		5. UNIT AGREEMENT NAME San Juan 28-7	
4. LOCATION OF WELL (Report location clearly and in accordance with any State requirements) At surface 870' FNL & 105.5' FWL At proposed prod. Zone 870' FNL & 105.5' FWL		6. FARM OR LEASE NAME WELL NO. 282	
5. DISTANCE IN MILES AND DIRECTION FROM NEAREST TOWN OR POST OFFICE		7. API WELL NO.	
6. NO. OF ACRES IN LEASE		8. FIELD AND POOL OR WILDCAT South Blanco Pictured Cliffs	
7. NO. OF ACRES ASSIGNED TO THIS WELL 160		9. SEC. T. R. M. OR BLK. AND SURVEY OR AREA Sec. 28, T28N, R7W	
8. PROPOSED DEPTH 3097'		10. COUNTY OR PARISH Rio Arriba	
9. ROTARY OR CABLE TOOLS Rotary		11. STATE NM	
10. ELEVATIONS (Show whether OF, RT, CR, etc.) 6156' GR		12. APPROX. DATE WORK WILL START 9/15/00	
11. DISTANCE FROM PROPOSED LOCATION TO NEAREST WELL, DAILING, COMPLETED, OR APPLIED FOR, ON THIS LEASE, FT.			
12. DISTANCE FROM PROPOSED LOCATION TO NEAREST PROPERTY OR LEASE LINE, FT. (Also to nearest dls. Unit line, if any)			
13. DISTANCE FROM PROPOSED LOCATION TO NEAREST WELL, DAILING, COMPLETED, OR APPLIED FOR, ON THIS LEASE, FT.			
14. DISTANCE FROM PROPOSED LOCATION TO NEAREST PROPERTY OR LEASE LINE, FT. (Also to nearest dls. Unit line, if any)			
15. DISTANCE FROM PROPOSED LOCATION TO NEAREST WELL, DAILING, COMPLETED, OR APPLIED FOR, ON THIS LEASE, FT.			
16. DISTANCE FROM PROPOSED LOCATION TO NEAREST PROPERTY OR LEASE LINE, FT. (Also to nearest dls. Unit line, if any)			
17. DISTANCE FROM PROPOSED LOCATION TO NEAREST WELL, DAILING, COMPLETED, OR APPLIED FOR, ON THIS LEASE, FT.			
18. DISTANCE FROM PROPOSED LOCATION TO NEAREST PROPERTY OR LEASE LINE, FT. (Also to nearest dls. Unit line, if any)			
19. DISTANCE FROM PROPOSED LOCATION TO NEAREST WELL, DAILING, COMPLETED, OR APPLIED FOR, ON THIS LEASE, FT.			
20. DISTANCE FROM PROPOSED LOCATION TO NEAREST PROPERTY OR LEASE LINE, FT. (Also to nearest dls. Unit line, if any)			
21. DISTANCE FROM PROPOSED LOCATION TO NEAREST WELL, DAILING, COMPLETED, OR APPLIED FOR, ON THIS LEASE, FT.			
22. DISTANCE FROM PROPOSED LOCATION TO NEAREST PROPERTY OR LEASE LINE, FT. (Also to nearest dls. Unit line, if any)			
23. DISTANCE FROM PROPOSED LOCATION TO NEAREST WELL, DAILING, COMPLETED, OR APPLIED FOR, ON THIS LEASE, FT.			
24. DISTANCE FROM PROPOSED LOCATION TO NEAREST PROPERTY OR LEASE LINE, FT. (Also to nearest dls. Unit line, if any)			
25. DISTANCE FROM PROPOSED LOCATION TO NEAREST WELL, DAILING, COMPLETED, OR APPLIED FOR, ON THIS LEASE, FT.			
26. DISTANCE FROM PROPOSED LOCATION TO NEAREST PROPERTY OR LEASE LINE, FT. (Also to nearest dls. Unit line, if any)			
27. DISTANCE FROM PROPOSED LOCATION TO NEAREST WELL, DAILING, COMPLETED, OR APPLIED FOR, ON THIS LEASE, FT.			
28. DISTANCE FROM PROPOSED LOCATION TO NEAREST PROPERTY OR LEASE LINE, FT. (Also to nearest dls. Unit line, if any)			
29. DISTANCE FROM PROPOSED LOCATION TO NEAREST WELL, DAILING, COMPLETED, OR APPLIED FOR, ON THIS LEASE, FT.			
30. DISTANCE FROM PROPOSED LOCATION TO NEAREST PROPERTY OR LEASE LINE, FT. (Also to nearest dls. Unit line, if any)			
31. DISTANCE FROM PROPOSED LOCATION TO NEAREST WELL, DAILING, COMPLETED, OR APPLIED FOR, ON THIS LEASE, FT.			
32. DISTANCE FROM PROPOSED LOCATION TO NEAREST PROPERTY OR LEASE LINE, FT. (Also to nearest dls. Unit line, if any)			
33. DISTANCE FROM PROPOSED LOCATION TO NEAREST WELL, DAILING, COMPLETED, OR APPLIED FOR, ON THIS LEASE, FT.			
34. DISTANCE FROM PROPOSED LOCATION TO NEAREST PROPERTY OR LEASE LINE, FT. (Also to nearest dls. Unit line, if any)			
35. DISTANCE FROM PROPOSED LOCATION TO NEAREST WELL, DAILING, COMPLETED, OR APPLIED FOR, ON THIS LEASE, FT.			
36. DISTANCE FROM PROPOSED LOCATION TO NEAREST PROPERTY OR LEASE LINE, FT. (Also to nearest dls. Unit line, if any)			
37. DISTANCE FROM PROPOSED LOCATION TO NEAREST WELL, DAILING, COMPLETED, OR APPLIED FOR, ON THIS LEASE, FT.			
38. DISTANCE FROM PROPOSED LOCATION TO NEAREST PROPERTY OR LEASE LINE, FT. (Also to nearest dls. Unit line, if any)			
39. DISTANCE FROM PROPOSED LOCATION TO NEAREST WELL, DAILING, COMPLETED, OR APPLIED FOR, ON THIS LEASE, FT.			
40. DISTANCE FROM PROPOSED LOCATION TO NEAREST PROPERTY OR LEASE LINE, FT. (Also to nearest dls. Unit line, if any)			
41. DISTANCE FROM PROPOSED LOCATION TO NEAREST WELL, DAILING, COMPLETED, OR APPLIED FOR, ON THIS LEASE, FT.			
42. DISTANCE FROM PROPOSED LOCATION TO NEAREST PROPERTY OR LEASE LINE, FT. (Also to nearest dls. Unit line, if any)			
43. DISTANCE FROM PROPOSED LOCATION TO NEAREST WELL, DAILING, COMPLETED, OR APPLIED FOR, ON THIS LEASE, FT.			
44. DISTANCE FROM PROPOSED LOCATION TO NEAREST PROPERTY OR LEASE LINE, FT. (Also to nearest dls. Unit line, if any)			
45. DISTANCE FROM PROPOSED LOCATION TO NEAREST WELL, DAILING, COMPLETED, OR APPLIED FOR, ON THIS LEASE, FT.			
46. DISTANCE FROM PROPOSED LOCATION TO NEAREST PROPERTY OR LEASE LINE, FT. (Also to nearest dls. Unit line, if any)			
47. DISTANCE FROM PROPOSED LOCATION TO NEAREST WELL, DAILING, COMPLETED, OR APPLIED FOR, ON THIS LEASE, FT.			
48. DISTANCE FROM PROPOSED LOCATION TO NEAREST PROPERTY OR LEASE LINE, FT. (Also to nearest dls. Unit line, if any)			
49. DISTANCE FROM PROPOSED LOCATION TO NEAREST WELL, DAILING, COMPLETED, OR APPLIED FOR, ON THIS LEASE, FT.			
50. DISTANCE FROM PROPOSED LOCATION TO NEAREST PROPERTY OR LEASE LINE, FT. (Also to nearest dls. Unit line, if any)			
51. DISTANCE FROM PROPOSED LOCATION TO NEAREST WELL, DAILING, COMPLETED, OR APPLIED FOR, ON THIS LEASE, FT.			
52. DISTANCE FROM PROPOSED LOCATION TO NEAREST PROPERTY OR LEASE LINE, FT. (Also to nearest dls. Unit line, if any)			
53. DISTANCE FROM PROPOSED LOCATION TO NEAREST WELL, DAILING, COMPLETED, OR APPLIED FOR, ON THIS LEASE, FT.			
54. DISTANCE FROM PROPOSED LOCATION TO NEAREST PROPERTY OR LEASE LINE, FT. (Also to nearest dls. Unit line, if any)			
55. DISTANCE FROM PROPOSED LOCATION TO NEAREST WELL, DAILING, COMPLETED, OR APPLIED FOR, ON THIS LEASE, FT.			
56. DISTANCE FROM PROPOSED LOCATION TO NEAREST PROPERTY OR LEASE LINE, FT. (Also to nearest dls. Unit line, if any)			
57. DISTANCE FROM PROPOSED LOCATION TO NEAREST WELL, DAILING, COMPLETED, OR APPLIED FOR, ON THIS LEASE, FT.			
58. DISTANCE FROM PROPOSED LOCATION TO NEAREST PROPERTY OR LEASE LINE, FT. (Also to nearest dls. Unit line, if any)			
59. DISTANCE FROM PROPOSED LOCATION TO NEAREST WELL, DAILING, COMPLETED, OR APPLIED FOR, ON THIS LEASE, FT.			
60. DISTANCE FROM PROPOSED LOCATION TO NEAREST PROPERTY OR LEASE LINE, FT. (Also to nearest dls. Unit line, if any)			
61. DISTANCE FROM PROPOSED LOCATION TO NEAREST WELL, DAILING, COMPLETED, OR APPLIED FOR, ON THIS LEASE, FT.			
62. DISTANCE FROM PROPOSED LOCATION TO NEAREST PROPERTY OR LEASE LINE, FT. (Also to nearest dls. Unit line, if any)			
63. DISTANCE FROM PROPOSED LOCATION TO NEAREST WELL, DAILING, COMPLETED, OR APPLIED FOR, ON THIS LEASE, FT.			
64. DISTANCE FROM PROPOSED LOCATION TO NEAREST PROPERTY OR LEASE LINE, FT. (Also to nearest dls. Unit line, if any)			
65. DISTANCE FROM PROPOSED LOCATION TO NEAREST WELL, DAILING, COMPLETED, OR APPLIED FOR, ON THIS LEASE, FT.			
66. DISTANCE FROM PROPOSED LOCATION TO NEAREST PROPERTY OR LEASE LINE, FT. (Also to nearest dls. Unit line, if any)			
67. DISTANCE FROM PROPOSED LOCATION TO NEAREST WELL, DAILING, COMPLETED, OR APPLIED FOR, ON THIS LEASE, FT.			
68. DISTANCE FROM PROPOSED LOCATION TO NEAREST PROPERTY OR LEASE LINE, FT. (Also to nearest dls. Unit line, if any)			
69. DISTANCE FROM PROPOSED LOCATION TO NEAREST WELL, DAILING, COMPLETED, OR APPLIED FOR, ON THIS LEASE, FT.			
70. DISTANCE FROM PROPOSED LOCATION TO NEAREST PROPERTY OR LEASE LINE, FT. (Also to nearest dls. Unit line, if any)			
71. DISTANCE FROM PROPOSED LOCATION TO NEAREST WELL, DAILING, COMPLETED, OR APPLIED FOR, ON THIS LEASE, FT.			
72. DISTANCE FROM PROPOSED LOCATION TO NEAREST PROPERTY OR LEASE LINE, FT. (Also to nearest dls. Unit line, if any)			
73. DISTANCE FROM PROPOSED LOCATION TO NEAREST WELL, DAILING, COMPLETED, OR APPLIED FOR, ON THIS LEASE, FT.			
74. DISTANCE FROM PROPOSED LOCATION TO NEAREST PROPERTY OR LEASE LINE, FT. (Also to nearest dls. Unit line, if any)			
75. DISTANCE FROM PROPOSED LOCATION TO NEAREST WELL, DAILING, COMPLETED, OR APPLIED FOR, ON THIS LEASE, FT.			
76. DISTANCE FROM PROPOSED LOCATION TO NEAREST PROPERTY OR LEASE LINE, FT. (Also to nearest dls. Unit line, if any)			
77. DISTANCE FROM PROPOSED LOCATION TO NEAREST WELL, DAILING, COMPLETED, OR APPLIED FOR, ON THIS LEASE, FT.			
78. DISTANCE FROM PROPOSED LOCATION TO NEAREST PROPERTY OR LEASE LINE, FT. (Also to nearest dls. Unit line, if any)			
79. DISTANCE FROM PROPOSED LOCATION TO NEAREST WELL, DAILING, COMPLETED, OR APPLIED FOR, ON THIS LEASE, FT.			
80. DISTANCE FROM PROPOSED LOCATION TO NEAREST PROPERTY OR LEASE LINE, FT. (Also to nearest dls. Unit line, if any)			
81. DISTANCE FROM PROPOSED LOCATION TO NEAREST WELL, DAILING, COMPLETED, OR APPLIED FOR, ON THIS LEASE, FT.			
82. DISTANCE FROM PROPOSED LOCATION TO NEAREST PROPERTY OR LEASE LINE, FT. (Also to nearest dls. Unit line, if any)			
83. DISTANCE FROM PROPOSED LOCATION TO NEAREST WELL, DAILING, COMPLETED, OR APPLIED FOR, ON THIS LEASE, FT.			
84. DISTANCE FROM PROPOSED LOCATION TO NEAREST PROPERTY OR LEASE LINE, FT. (Also to nearest dls. Unit line, if any)			
85. DISTANCE FROM PROPOSED LOCATION TO NEAREST WELL, DAILING, COMPLETED, OR APPLIED FOR, ON THIS LEASE, FT.			
86. DISTANCE FROM PROPOSED LOCATION TO NEAREST PROPERTY OR LEASE LINE, FT. (Also to nearest dls. Unit line, if any)			
87. DISTANCE FROM PROPOSED LOCATION TO NEAREST WELL, DAILING, COMPLETED, OR APPLIED FOR, ON THIS LEASE, FT.			
88. DISTANCE FROM PROPOSED LOCATION TO NEAREST PROPERTY OR LEASE LINE, FT. (Also to nearest dls. Unit line, if any)			
89. DISTANCE FROM PROPOSED LOCATION TO NEAREST WELL, DAILING, COMPLETED, OR APPLIED FOR, ON THIS LEASE, FT.			
90. DISTANCE FROM PROPOSED LOCATION TO NEAREST PROPERTY OR LEASE LINE, FT. (Also to nearest dls. Unit line, if any)			
91. DISTANCE FROM PROPOSED LOCATION TO NEAREST WELL, DAILING, COMPLETED, OR APPLIED FOR, ON THIS LEASE, FT.			
92. DISTANCE FROM PROPOSED LOCATION TO NEAREST PROPERTY OR LEASE LINE, FT. (Also to nearest dls. Unit line, if any)			
93. DISTANCE FROM PROPOSED LOCATION TO NEAREST WELL, DAILING, COMPLETED, OR APPLIED FOR, ON THIS LEASE, FT.			
94. DISTANCE FROM PROPOSED LOCATION TO NEAREST PROPERTY OR LEASE LINE, FT. (Also to nearest dls. Unit line, if any)			
95. DISTANCE FROM PROPOSED LOCATION TO NEAREST WELL, DAILING, COMPLETED, OR APPLIED FOR, ON THIS LEASE, FT.			
96. DISTANCE FROM PROPOSED LOCATION TO NEAREST PROPERTY OR LEASE LINE, FT. (Also to nearest dls. Unit line, if any)			
97. DISTANCE FROM PROPOSED LOCATION TO NEAREST WELL, DAILING, COMPLETED, OR APPLIED FOR, ON THIS LEASE, FT.			
98. DISTANCE FROM PROPOSED LOCATION TO NEAREST PROPERTY OR LEASE LINE, FT. (Also to nearest dls. Unit line, if any)			
99. DISTANCE FROM PROPOSED LOCATION TO NEAREST WELL, DAILING, COMPLETED, OR APPLIED FOR, ON THIS LEASE, FT.			
100. DISTANCE FROM PROPOSED LOCATION TO NEAREST PROPERTY OR LEASE LINE, FT. (Also to nearest dls. Unit line, if any)			

This action is subject to technical and procedural review pursuant to 43 CFR 3105.4. PROPOSED CASING AND CEMENTING OPERATIONS AUTHORIZED ARE SUBJECT TO COMPLIANCE WITH ATTACHED GENERAL REQUIREMENTS

SIZE OF HOLE	GRADE, SIZE OF CASING	WEIGHT PER FOOT	SETTING	REQUIREMENTS
8 3/4"	J-55; 7"	20#	250'	70 sxs, circ.
6 1/4"	J-55; 4 1/2"	10.5#	3097'	280 sxs, circ. to surface

It is proposed to drill a vertical wellbore in the South Blanco Pictured Cliffs Pool. An NOS was filed 4/26/00. The well will be drilled and equipped according to the following additional attachments:

1. Well Location & Acreage Dedication Plat (C-102).
2. Proposed Well Plan Outline.
3. Cementing Plan.
4. Blowout Preventer Hookup.
5. Surface Use Plan including temporary pipeline tie specifications.
6. Production Facility Layout.

APD/ROW

This application includes ROW's for the well pad, and pipeline. The pipe-wall thickness is .156 and the pipe-wall strength is 42,000# yield.

IN ABOVE SPACE DESCRIBE PROPOSED PROGRAM: If proposal is to deepen give data on present productive zone and proposed new productive zone. If proposal is to drill or deepen directionally, give pertinent data on subsurface locations and measured and true vertical depths. Give blowout preventer program, if any.

SIGNED J. Alan Johnson TITLE Sr. Property Analyst DATE 8/4/00
(This space for Federal or State office Use)

PERMIT NO. _____ APPROVAL DATE _____
Application approval does not warrant or certify that the applicant holds legal or equitable title to those rights in the subject lease which would entitle the applicant to conduct operations thereon.

CONDITIONS OF APPROVAL, IF ANY:

APPROVED BY [Signature] TITLE Petr. Eng. DATE 11/1/00

*See Instructions On Reverse Side

Title 18 U.S.C. Section 1001, makes it a crime for any person knowingly and willfully to make to any department or agency of the United States any false, fictitious or fraudulent statements or representations as to any matter within its jurisdiction.

OPERATOR

OGRID	YY	MM	POOL	API	WELL	WC		INJ	CD	Prod		Prod	Vol Processing		Entered	CTRL	Err
						St	Cd			Vol (Oil)	Vol (Water)		Date	Date			
14538	1997	2	71599	30-039	20671			0		0	0	0	3714	05-28-1997	05-18-1997	000000344	V1509
14538	1997	2	71599	30-039	20804			0		0	0	0	773	05-28-1997	05-18-1997	000000344	V1509
14538	1997	2	71599	30-039	20805			0		0	0	0	3478	05-28-1997	05-18-1997	000000344	V1509
14538	1997	2	71599	30-039	20806			0		0	0	0	625	05-28-1997	05-18-1997	000000344	V1509
14538	1997	2	71599	30-039	20807			0		0	0	0	1869	05-28-1997	05-18-1997	000000344	V1509
14538	1997	2	71599	30-039	20833			0		0	0	0	2143	05-28-1997	05-18-1997	000000344	V1509
14538	1997	2	71599	30-039	20840			0		0	0	0	3833	05-28-1997	05-18-1997	000000344	V1509
14538	1997	2	71599	30-039	20841			0		0	0	0	2352	05-28-1997	05-18-1997	000000344	V1509
14538	1997	2	71599	30-039	20844			0		0	0	0	2460	05-28-1997	05-18-1997	000000344	V1509
14538	1997	2	71599	30-039	20845			0		0	2	0	851	05-28-1997	05-18-1997	000000344	V1509
14538	1997	2	71599	30-039	20846			0		0	0	0	4188	05-28-1997	05-18-1997	000000344	V1509
14538	1997	2	71599	30-039	20847			0		0	0	0	2461	05-28-1997	05-18-1997	000000344	V1509
14538	1997	2	71599	30-039	20849			0		0	0	0	3561	05-28-1997	05-18-1997	000000344	V1509
14538	1997	2	71599	30-039	20868			0		0	0	0	2626	05-28-1997	05-18-1997	000000344	V1509
14538	1997	2	71599	30-039	20874			0		0	0	0	1658	05-28-1997	05-18-1997	000000344	V1509
14538	1997	2	71599	30-039	20876			0		0	0	0	3722	05-28-1997	05-18-1997	000000344	V1509
14538	1997	2	71599	30-039	20888			0		0	0	0	3291	05-28-1997	05-18-1997	000000344	V1509
14538	1997	2	71599	30-039	20889			0		0	0	0	1885	05-28-1997	05-18-1997	000000344	V1509
14538	1997	2	71599	30-039	20908			0		0	0	0	85	05-28-1997	05-18-1997	000000344	V1509

District I
PO Box 1980, Hobbs, NM 88241-1980

District II
PO Drawer CD, Artesia, NM 88211-0719

District III
1000 Rio Brazos Rd., Aztec, NM 87410

District IV
PO Box 2088, Santa Fe, NM 87504-2088

State of New Mexico
Energy, Minerals & Natural Resources Department

OIL CONSERVATION DIVISION
PO Box 2088
Santa Fe, NM 87504-2088

Form C-102
Revised February 21, 1994
Instructions on back
Submit to Appropriate District Office
State Lease - 4 Copies
Fee Lease - 3 Copies

☐ AMENDED REPORT

WELL LOCATION AND ACREAGE DEDICATION PLAT

*API Number 30039-26541		*Pool Code 72439	*Pool Name SOUTH BLANCO PICTURED CLIFFS
*Property Code 016508	*Property Name SAN JUAN 28-7 UNIT		*Well Number 282
*GRID No. 005073	*Operator Name CONOCO, INC.		*Elevation 6155'

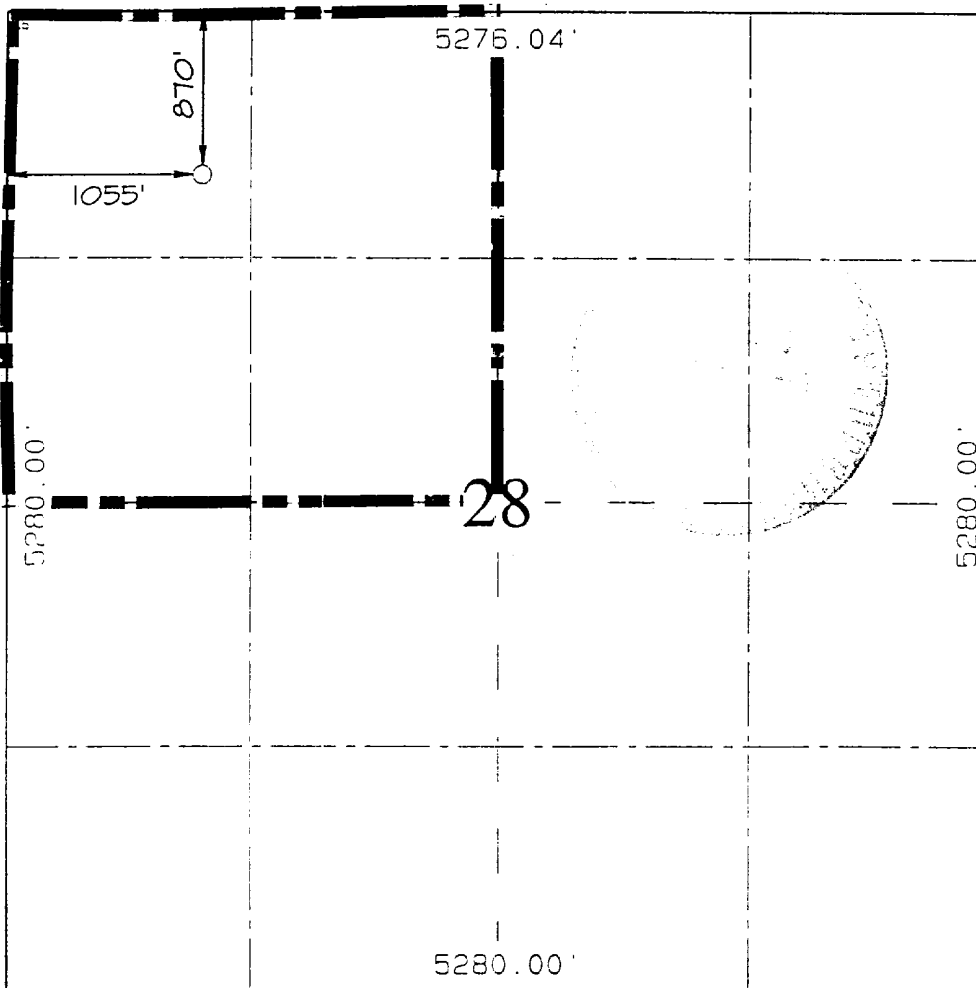
10 Surface Location

UL or lot no 0	Section 28	Township 28N	Range 7W	Lot Ion	Feet from the 870	North/South line NORTH	Feet from the 1055	East/West line WEST	County RIO ARriba
-------------------	---------------	-----------------	-------------	---------	----------------------	---------------------------	-----------------------	------------------------	----------------------

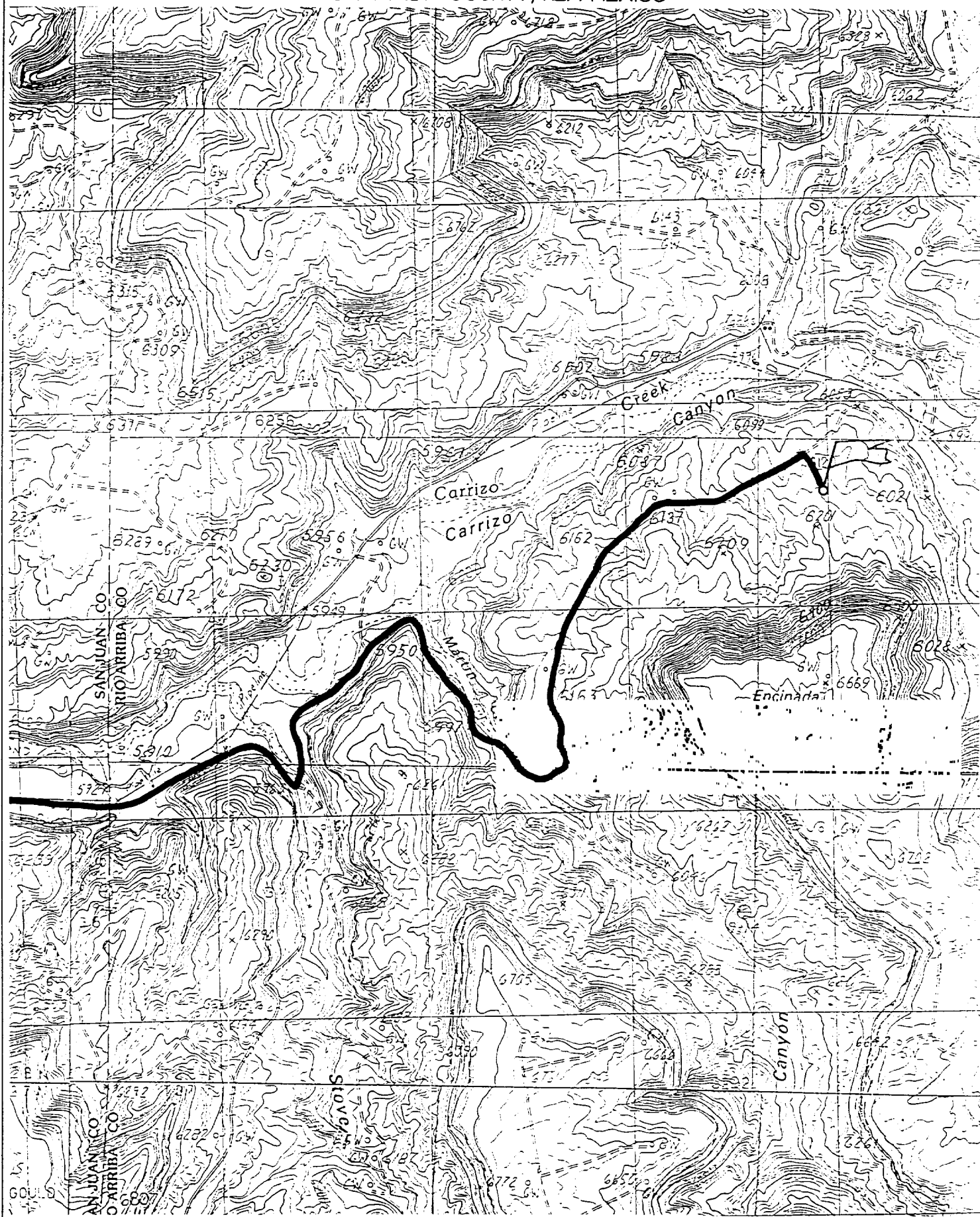
11 Bottom Hole Location If Different From Surface

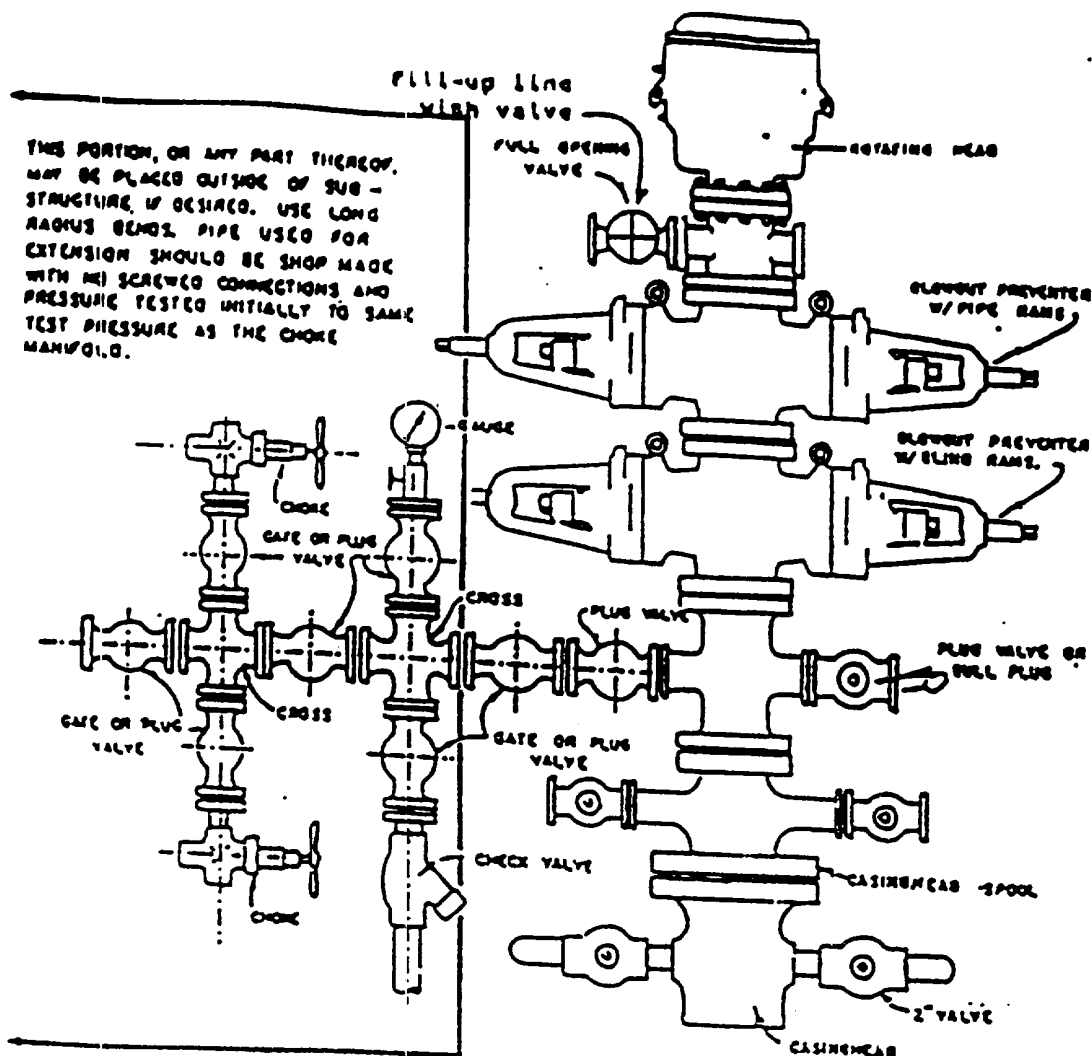
UL or lot no	Section	Township	Range	Lot Ion	Feet from the	North/South line	Feet from the	East/West line	County
12 Dedicated Acres NW / 160					13 Joint or Infill	14 Consolidation Code	15 Order No.		

NO ALLOWABLE WILL BE ASSIGNED TO THIS COMPLETION UNTIL ALL INTERESTS HAVE BEEN CONSOLIDATED
OR A NON-STANDARD UNIT HAS BEEN APPROVED BY THE DIVISION

		<p>17 OPERATOR CERTIFICATION</p> <p>I hereby certify that the information contained herein is true and complete to the best of my knowledge and belief.</p> <p>Signature JoAnn Johnson</p> <p>Printed Name Sr. Property Analyst</p> <p>Title</p> <p>Date</p> <p>18 SURVEYOR CERTIFICATION</p> <p>I hereby certify that the well location shown on this plat was plotted from field notes or actual surveys made by me or under my supervision, and that the same is true and correct to the best of my belief.</p> <p>JUNE 13, 2000</p> <p>Date of Survey</p> <p>Signature and Seal NEALE C. EDWARDS NEW MEXICO 6857</p> <p>Certificate Number 6857</p>
--	--	---

870' FNL & 1055' FWL, SECTION 28, T28N, R7W, N.M.P.M.
RIO ARriba COUNTY, NEW MEXICO





BLOWOUT PREVENTER HOOKUP

Drilling contractors used in the San Juan Basing supply 3000 psi equipment, but cannot provide annular preventors because of sub-structure limitations. Maximum anticipated surface pressures for this well will not exceed the working pressure of the proposed BOP system. Please see the attached BOP diagram details 2000 psi equipment according to Onshore Order No. 2 even though the equipment will test to 3000 psi. The 2000 psi system allows deletion of the annular preventor and fulfills your requirements (note diagram No. 1). In addition, the following equipment will comprise the 2000 psi system:

1. Two rams with one blind and one pipe ram.
2. Kill line (2 inch maximum).
3. One kill line valve.
4. One choke line valve.
5. Two chokes (reference diagram No. 1).
6. Upper kelly cock valve with handle.
7. Safety valve and subs to fit all drill strings in use.
8. Two-inch minimum choke line.
9. Pressure gauge on choke manifold.
10. Fill-up line above the upper most preventor.
11. Rotating head.

Cathodic Protection System Description

Anode Bed Type	Deep Well	
Hole Size	3"	
Hole Depth	200' - 500'	As required to place anodes below moisture and in low resistance strata.
Surface Casing	8" Diam., \geq 20' Length, Cemented In Annular Space	When needed, casing will be installed at an adequate depth to control ground water flow. Casing will extend a minimum of 2' above grade, be surrounded by a concrete pad, and sealed with a PVC cap. Steel casing will be substituted when boulders are encountered.
Vent Pipe	1" Diam. PVC	Vent pipe will extend from bottom of hole, through top of casing cap, and sealed with a 1" perforated PVC cap.
Type Of Anodes	Cast Iron Or Graphite	
Number Of Anodes	8 - 20	Sufficient quantity to achieve a total anode bed resistance of < 1 ohm and a design life \geq 20 years.
Anode Bed Backfill	Loresco SW Calcined Petroleum Coke Breeze	Installed from bottom of hole to 10' above top anode.
Anode Junction Box	8 - 20 Circuit Fiberglass Or Metal	Sealed to prevent insect & rodent intrusion.
Current Splitter Box	2 - 5 Circuit Metal	Sealed to prevent insect & rodent intrusion.
DC / AC Cable	DC: #2, #4, #6, #8 Stranded Copper (One Size Or Any Combination Of) With High Molecular Weight Polyethylene (HMWPE) Insulation. AC: #8 Stranded Copper HMWPE	18" depth in typical situation, 24" depth in roadway, & 36" depth in arroyo's and streams. EXCEPTION: If trenching is in extremely hard substratum, depth will be 6 - 12" with cable installed in conduit. Installed above foreign pipelines if 1' clearance is available, if not, installed under foreign pipeline with 1' clearance (AC cable <i>always</i> installed under foreign pipeline in conduit).
Power Source	1) Rectifier 2) Solar Power Unit 3) Thermoelectric Generator	Choice of power source depending on availability of AC & other economic factors.
External Painting	Color to be selected according to BLM specifications.	Paint applied to any surface equipment associated with the CP system which can reasonably be painted.