

UNITED STATES  
DEPARTMENT OF THE INTERIOR  
BUREAU OF LAND MANAGEMENT

FORM APPROVED  
OMB NO. 1004-0136  
Expires February 28, 1995

APPLICATION FOR PERMIT TO DRILL OR DEEPEN

1. TYPE OF WORK

DRILL ☒

DEEPEN ☐ 2001 MAR -7 PM 2:27

b. TYPE OF WELL

OIL WELL ☐ GAS WELL ☒ OTHER

SINGLE ZONE ☐ MULTIPLE ZONE ☒

2. NAME OF OPERATOR

Conoco Inc.

3. ADDRESS AND TELEPHONE NO.

10 Desta Drive, Suite 649W, Midland, TX 79705; 915/686-5565

4. LOCATION OF WELL (Report location clearly and in accordance with any State requirements\*)

At surface

740' FNL & 2170' FEL

At proposed prod. Zone

740' FNL & 2170' FEL

14. DISTANCE IN MILES AND DIRECTION FROM NEAREST TOWN OR POST OFFICE\*

6069'

15. DISTANCE FROM PROPOSED\*

LOCATION TO NEAREST  
PROPERTY OR LEASE LINE, FT.

(Also to nearest drlg. Unit line, if any)

18. DISTANCE FROM PROPOSED LOCATION\*

TO NEAREST WELL, DRILLING, COMPLETED,  
OR APPLIED FOR, ON THIS LEASE, FT.

21. ELEVATIONS (Show whether DF, RT, GR, etc.)

6. NO. OF ACRES IN LEASE

9. PROPOSED DEPTH

7182'

17. NO. OF ACRES ASSIGNED  
TO THIS WELL

321.87 E/2

22. ROTARY OR CABLE TOOLS

Rotary

22. APPROX. DATE WORK WILL START\*

03/17/01

PROPOSED CASING AND CEMENTING PROGRAM

SIZE OF HOLE	GRADE, SIZE OF CASING	WEIGHT PER FOOT	SETTING DEPTH	QUANTITY OF CEMENT
12 1/2"	J-55; 9 5/8"	36#	285'	141 sxs, circ. —
8 3/4"	J-55; 7"	20#	3180' -	509 sxs, circ. —
6 1/4"	J-55; 4 1/2"	10.5#	7182' -	TOC @ 3080', 324 sxs, circ. —

It is proposed to drill a vertical wellbore to the Mesaverde/Dakota Pools. A DHC application will be filed with the BLM and NMOCD. An NOS was filed 01/17/01. The well will be drilled and equipped according to the following additional attachments:

1. Well Location & Acreage Dedication Plat (C-102).
2. Proposed Well Plan Outline.
3. Cementing Plan.
4. Blowout Preventer Hookup.
5. Surface Use Plan
6. Production Facility Layout.

This action is subject to technical and  
procedural review pursuant to 43 CFR 3105.3  
and appeal pursuant to 43 CFR 3105.4.

THIS ACTION IS SUBJECT TO TECHNICAL AND  
PROCEDURAL REVIEW PURSUANT TO 43 CFR 3105.3  
AND APPEAL PURSUANT TO 43 CFR 3105.4.  
APD/ROW

This application includes ROW's for the well pad, cathodic protection, and pipeline.

IN ABOVE SPACE DESCRIBE PROPOSED PROGRAM: If proposal is to deepen give data on present productive zone and proposed new productive zone. If proposal is to drill or deepen directionally, give pertinent data on subsurface locations and measured and true vertical depths. Give blowout preventer program, if any.

SIGNED Kimberly Smith TITLE Analyst

DATE 02/19/01

(This space for Federal or State office Use)

PERMIT NO. \_\_\_\_\_

APPROVAL DATE 4/20/01

Application approval does not warrant or certify that the applicant holds legal or equitable title to those rights in the subject lease which would entitle the applicant to conduct operations thereon.

CONDITIONS OF APPROVAL, IF ANY:

APPROVED BY /s/ Joel Farrell

TITLE \_\_\_\_\_

DATE APR 20 02

\*See Instructions On Reverse Side

Title 18 U.S.C. Section 1001, makes it a crime for any person knowingly and willfully to make to any department or agency of the United States any false, fictitious or fraudulent statements or representations as to any matter within its jurisdiction.

NMOCD

District II  
-PO Drawer DD, Artesia, NM 88211-0719

OIL CONSERVATION DIVISION  
PO Box 2088  
Santa Fe, NM 87504-2088

District III  
1000 Rio Brazos Rd., Aztec, NM 87410

District IV  
PO Box 2088, Santa Fe, NM 87504-2088

2001 MAR -7 PM 2:28

☐ AMENDED REPORT

## WELL LOCATION AND ACREAGE DEDICATION PLAT

*API Number 30-039-26694		*Pool Code 72319 / 71599	*Pool Name BLANCO MESAVERDE / BASIN DAKOTA
*Property Code 016608	*Property Name SAN JUAN 28-7 UNIT		*Well Number 225F
*OGRID No. 005073	*Operator Name CONOCO, INC.		*Elevation 6069'

<sup>10</sup> Surface Location

UL or lot no.	Section	Township	Range	Lot Idn	Feet from the	North/South line	Feet from the	East/West line	County
B	34	28N	7W		740	NORTH	2170	EAST	RIO ARRIBA

<sup>11</sup> Bottom Hole Location If Different From Surface

UL or lot no.	Section	Township	Range	Lot Idn	Feet from the	North/South line	Feet from the	East/West line	County
<sup>12</sup> Dedicated Acres 321.87 Acres (E/2)					<sup>13</sup> Joint or Infill	<sup>14</sup> Consolidation Code	<sup>15</sup> Order No. <i>R-11139-A</i> Effective Date <i>2/12/01</i>		

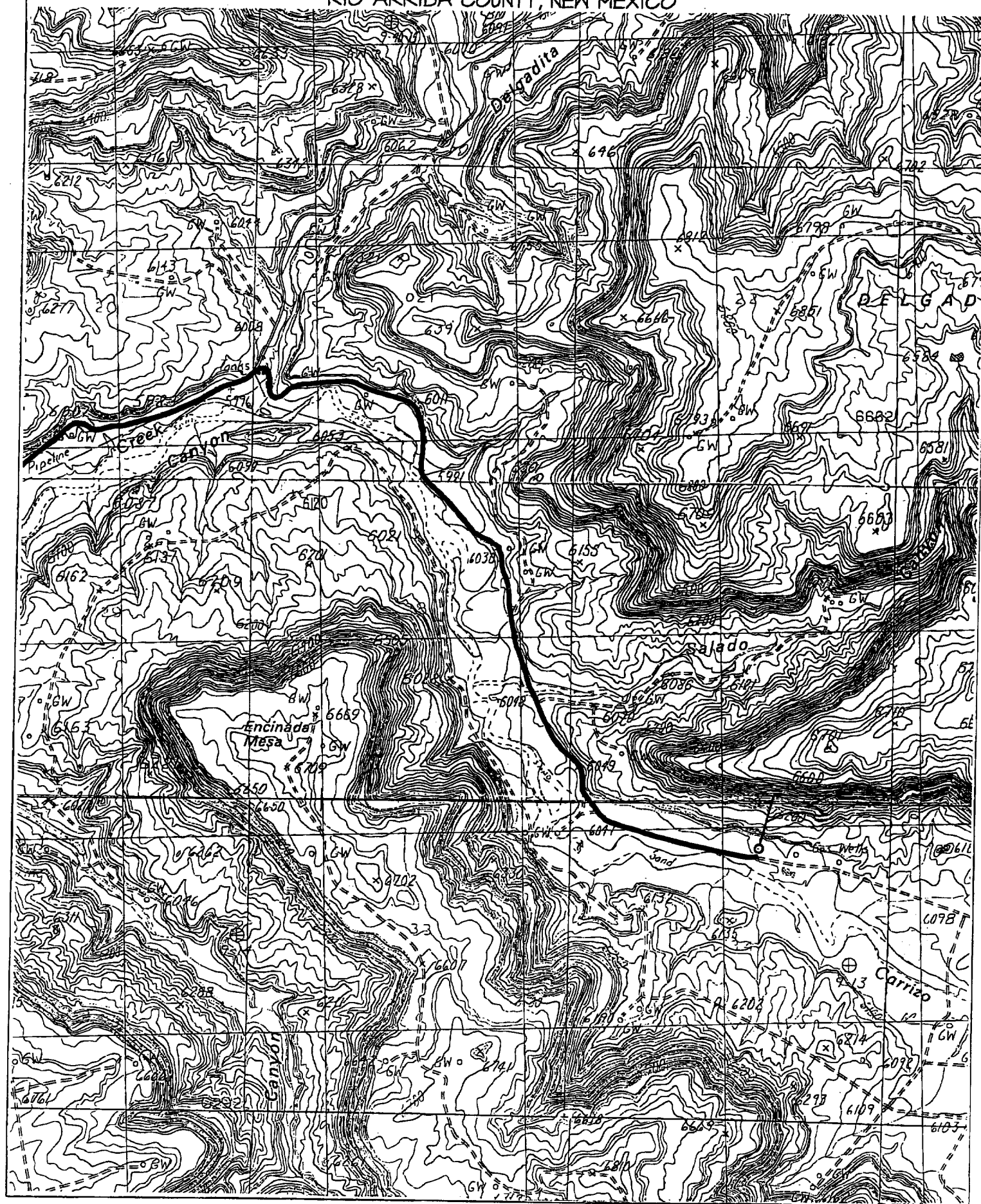
NO ALLOWABLE WILL BE ASSIGNED TO THIS COMPLETION UNTIL ALL INTERESTS HAVE BEEN CONSOLIDATED  
OR A NON-STANDARD UNIT HAS BEEN APPROVED BY THE DIVISION

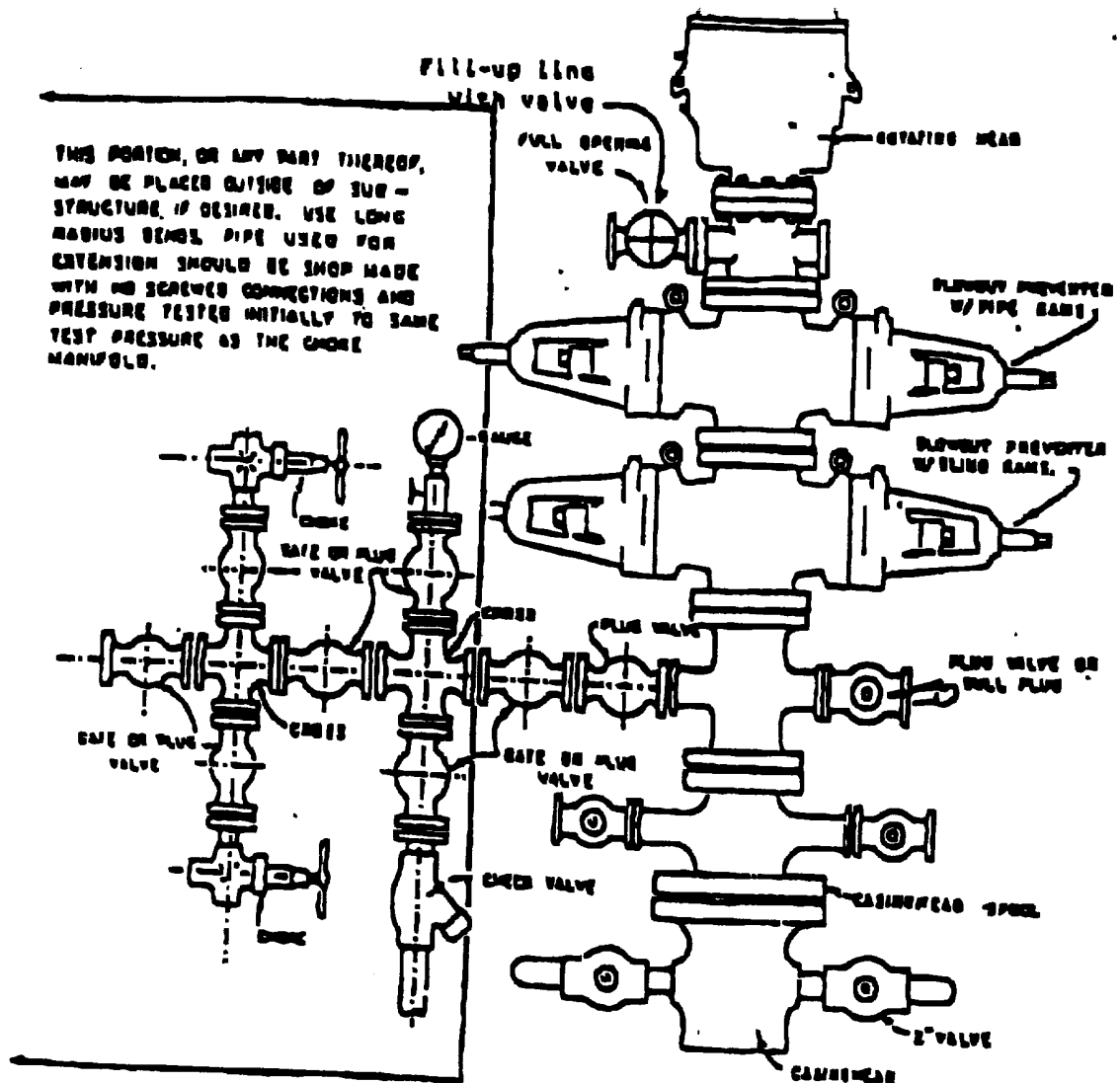
The figure is a survey map showing four lots (LOT 1, LOT 2, LOT 3, LOT 4) arranged in a 2x2 grid. The map includes dimensions for the lots and the surrounding area. The horizontal dimensions are 5280.00' for the top and bottom boundaries, and 2170' for the width of each lot. The vertical dimensions are 2640.00' for the left and right boundaries, and 1320.00' for the height of each lot. A north arrow is located in the upper left corner. A circular seal is stamped over LOT 3, containing the text "APR 2001 RECEIVED OIL CON. DIV DIST. 9". A handwritten "SF-078496-A" is visible in the center of the map. The surveyor's name, "NEALEC EDWARDS", and the number "6857" are visible in the bottom right corner.

Lot	Width (ft)	Height (ft)
LOT 1	2170'	1320.00'
LOT 2	2170'	1320.00'
LOT 3	2170'	1320.00'
LOT 4	2170'	1320.00'

Surveyor's Seal: NEALEC EDWARDS, NEW MEXICO, 6857

740' FNL & 2170' FEL, SECTION 34, T28N, R7W, N.M.P.M.  
RIO ARRIBA COUNTY, NEW MEXICO





# BLOWOUT PREVENTER HOOKUP

Drilling contractors used in the San Juan Basing supply 3000 psi equipment, but cannot provide annular preventors because of sub-structure limitations. Maximum anticipated surface pressures for this well will not exceed the working pressure of the proposed BOP system. Please see the attached BOP diagram details 2000 psi equipment according to Onshore Order No. 2 even though the equipment will test to 3000 psi. The 2000 psi system allows deletion of the annular preventor and fulfills your requirements (note diagram No. 1). In addition, the following equipment will comprise the 2000 psi system:

1. Two rams with one blind and one pipe ram.
2. Kill line (2 inch maximum).
3. One kill line valve.
4. One choke line valve.
5. Two chokes (reference diagram No. 1).
6. Upper kelly cock valve with handle.
7. Safety valve and subs to fit all drill strings in use.
8. Two-inch minimum choke line.
9. Pressure gauge on choke manifold.
10. Fill-up line above the upper most preventor.
11. Rotating head.