

**\*\* ORIGINAL \*\* ORIGINAL \*\* ORIGINAL \*\* ORIGINAL \*\* ORIGINAL \*\* ORIGINAL \*\* ORIGINAL \*\***

District II  
PO Drawer DD, Artesia, NM 88211-0719

OIL CONSERVATION DIVISION  
PO Box 2088  
Santa Fe, NM 87504-2088

District III  
1000 Rio Brazos Rd., Aztec, NM 87410

District IV  
PO Box 2088, Santa Fe, NM 87504-2088

☐ AMENDED REPORT

## WELL LOCATION AND ACREAGE DEDICATION PLAT

|                            |                                      |                     |   |                     |
|----------------------------|--------------------------------------|---------------------|---|---------------------|
| *API Number<br>30039-26797 |                                      | *Pool Code<br>72439 | *Pool Name<br>BLANCO PICTURED CLIFFS, SOUTH |                     |
| *Property Code<br>016608   | *Property Name<br>SAN JUAN 28-7 UNIT |                     |   | *Well Number<br>295 |
| *GRID No<br>005073         | *Operator Name<br>CONOCO, INC.       |                     |   | *Elevation<br>6168  |

<sup>10</sup> Surface Location

|               |         |          |       |         |               |                  |               |                |               |
|---------------|---------|----------|-------|---------|---------------|------------------|---------------|----------------|---------------|
| UL or lot no. | Section | Township | Range | Lot Idn | Feet from the | North/South line | Feet from the | East/West line | County        |
| P             | 34      | 28N      | 7W    |         | 765           | SOUTH            | 960           | EAST           | RIO<br>ARRIBA |

<sup>11</sup> Bottom Hole Location If Different From Surface

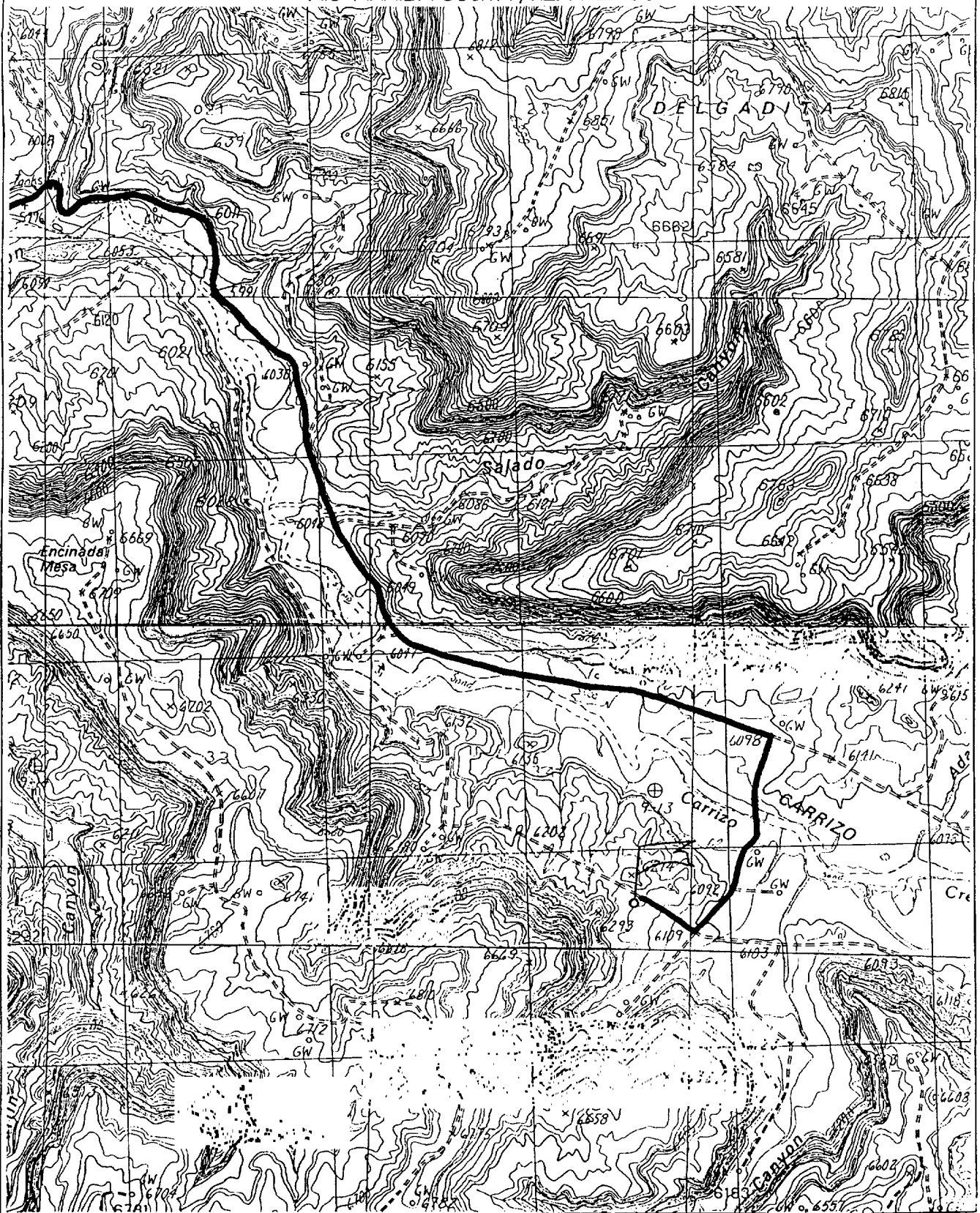
| U. or lot no. | Section | Township | Range | Lot Idn | Feet from the | North/South line | Feet from the | East/West line | County |
|---------------|---------|----------|-------|---------|---------------|------------------|---------------|----------------|--------|
|---------------|---------|----------|-------|---------|---------------|------------------|---------------|----------------|--------|

|                               |                     |                               |                                  |                         |
|-------------------------------|---------------------|-------------------------------|----------------------------------|-------------------------|
| <sup>12</sup> Dedicated Acres | 161.87 Acres (SE/4) | <sup>13</sup> Joint or Infill | <sup>14</sup> Consolidation Code | <sup>15</sup> Order No. |
|-------------------------------|---------------------|-------------------------------|----------------------------------|-------------------------|

NO ALLOWABLE WILL BE ASSIGNED TO THIS COMPLETION UNTIL ALL INTERESTS HAVE BEEN CONSOLIDATED  
OR A NON-STANDARD UNIT HAS BEEN APPROVED BY THE DIVISION

|   |  |
|---|--|
| <div data-bbox="158 889 1024 1328"><div>15</div><div>5280.00'</div><div>2640.00'</div><div>2640.00'</div><div>34</div><div>NOV 2001</div></div>   | <div data-bbox="1024 889 1422 1328"><div>17 OPERATOR CERTIFICATION</div><div>I hereby certify that the information contained herein is true and complete to the best of my knowledge and belief.</div><div>Kim Southall</div><div>Signature</div><div>Kim Southall</div><div>Printed Name</div><div>Property Analyst</div><div>Title</div><div>April 6, 2001</div><div>Date</div></div>  |
| <div data-bbox="158 1328 1024 1748"><div>1320.00'</div><div>SF-078496-A</div><div>LOT 4</div><div>LOT 3</div><div>LOT 2</div><div>LOT 1</div><div>960'</div><div>765'</div><div>1372.80'</div><div>5280.00'</div></div> | <div data-bbox="1024 1328 1422 1748"><div>18 SURVEYOR CERTIFICATION</div><div>I hereby certify that the well location shown on this plan was plotted from field notes of actual surveys made by me or under my supervision, and that the same is true and correct to the best of my belief.</div><div>MARCH 31, 2001</div><div>Date of Survey</div><div>NEALE C. EDWARDS</div><div>NEW MEXICO</div><div>6857</div><div>REGISTERED PROFESSIONAL SURVEYOR</div><div>6857</div></div> |

CONOCO, INC. SAN JUAN 28-7 UNIT #295  
765' FSL & 960' FEL, SECTION 34, T28N, R7W, N.M.P.M.  
RIO ARriba COUNTY, NEW MEXICO



# PROJECT PROPOSAL - New Drill / Sidetrack



Well : SAN JUAN 28-7 295      Lease : SAN JUAN 28-7      AFE # :      AFE \$ :  
 Field Name : EAST 28-7      Rig :      State :      County :      API # :  
 Geoscientist : Layla Stiles      Phone : (281) 293-3591      Prod. Engineer : Moody, Craig E.      Phone : (281) 293 - 6559  
 Res. Engineer : Valvatne, Christine K.      Phone :      Proj. Field Lead :      Phone :

## Primary Objective (Zones) :

Pool      Pool Name  
 UPT      BLANCO P.C. SOUTH (PRORATED GAS)

*"Bud Drill"*

## Surface Location :

Latitude : 36.612511      Longitude : -107.5545      X :      Y :      Section : 34      Survey : 28N      Abstract : 7W  
 Footage X : 960 FEL      Footage Y : 765 FSL      Elevation: 6168 (FT)

## Bottom Hole Location :

Latitude :      Longitude :      X :      Y :      Section :      Survey :      Abstract :  
 Location Type : Year Round      Start Date (Est.) :      Completion Date :      Date In Operation :

Formation Data : Assume KB = 6181      Units = FT

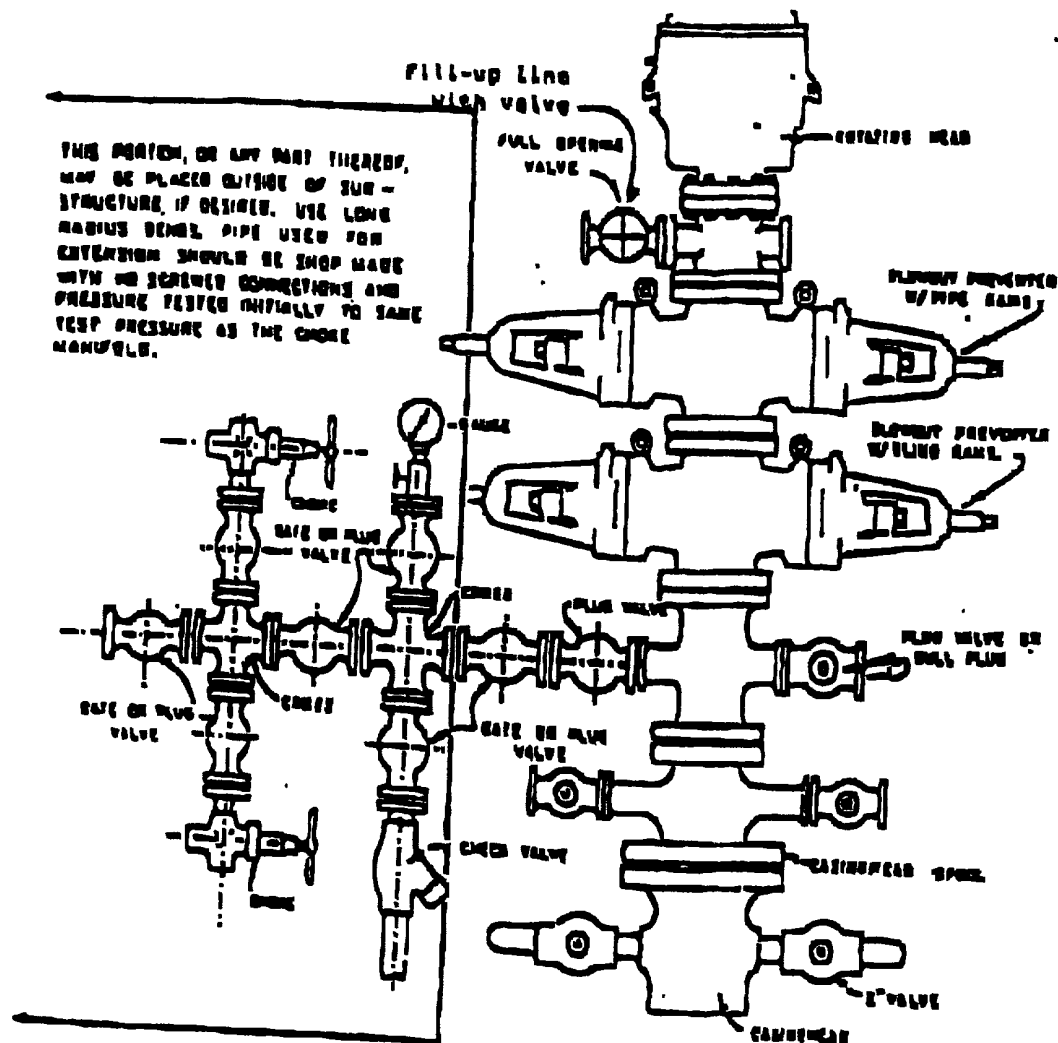
| Formation Call & Casing Points | Depth (TVD in Ft) | SS (Ft) | Depletion (Yes/No)                  | BHP (PSIG) | BHT | Remarks   |
|--------------------------------|-------------------|---------|-------------------------------------|------------|-----|---|
| Surface Casing                 | 235               | 5946    | <input checked="" type="checkbox"/> |            |     | Severe lost circulation is possible. 7", 20 ppf, J-55, STC casing. Circulate cement to surface.   |
| OJAM                           | 1921              | 4260    | <input checked="" type="checkbox"/> |            |     | Possible water flows  |
| KRLD                           | 2099              | 4082    | <input checked="" type="checkbox"/> |            |     |   |
| FRLD                           | 2387              | 3794    | <input checked="" type="checkbox"/> |            |     | Possible gas  |
| PCCF                           | 2786              | 3395    | <input checked="" type="checkbox"/> |            |     |   |
| Total Depth                    | 3201              | 2995    | <input checked="" type="checkbox"/> |            |     | 4 1/2", 10.5 ppf, J-55, STC casing. Circulate cement a minimum of 100' inside the previous casing string. No open hole logs. Cased hole TDT with GR to surface. |

## Logging Program :

Intermediate Logs : ☐ Log only if show      ☐ GR / ILD      ☐ Triple Combo  
 TD Logs : ☐ Triple Combo      ☐ Dipmeter      ☐ RFT      ☐ Sonic      ☐ VSP      ☒ TDT

Additional Information : Logging company to provide a sketch with all lengths, OD's & ID's of all tools prior to running in the hole.  
 Cased hole TDT with GR to surface.

Comments :



### BLOWOUT PREVENTER HOOKUP

Drilling contractors used in the San Juan Basing supply 3000 psi equipment, but cannot provide annular preventers because of sub-structure limitations. Maximum anticipated surface pressures for this well will not exceed the working pressure of the proposed BOP system. Please see the attached BOP diagram details 2000 psi equipment according to Onshore Order No. 2 even though the equipment will test to 3000 psi. The 2000 psi system allows the deletion of the annular preventor and fulfills your requirements (note diagram No. 1). In addition, the following equipment will comprise the 2000 psi system:

1. Two rams with one blind and one pipe ram.
2. Kill line (2 inch maximum).
3. One kill line valve.
4. One choke line valve.
5. Two chokes (reference diagram No. 1).
6. Upper kelly cock valve with handle.
7. Safety valve and subs to fit all drill strings in use.
8. Two-inch minimum choke line.
9. Pressure gauge on choke manifold.
10. Fill-up line above the upper most preventor.
11. Rotating head.