

UNITED STATES  
DEPARTMENT OF THE INTERIOR  
BUREAU OF LAND MANAGEMENT

APPLICATION FOR PERMIT TO DRILL, DEEPEN, OR PLUG BACK

1a. Type of Work DRILL	5. Lease Number SF-079250 Unit Reporting Number MV-8910009490 DK-891000949A
1b. Type of Well GAS	6. If Indian, All. or Tribe
2. Operator <b>BURLINGTON RESOURCES</b> Oil & Gas Company	7. Unit Agreement Name San Juan 28-5 Unit
3. Address & Phone No. of Operator PO Box 4289, Farmington, NM 87499 (505) 326-9700	8. Farm or Lease Name San Juan 28-5 Unit 9. Well Number 75M
4. Location of Well 1980' FNL, 1970' FWL Latitude 36° 39.8, Longitude 107° 23.1	10. Field, Pool, Wildcat Blanco MV/Basin DK 11. Sec., Twn, Rge, Mer. (NMPM) F Sec. 17, T-28-N, R-5-W API # 30-039-27019
14. Distance in Miles from Nearest Town 3 miles from Gobernador	12. County Rio Arriba 13. State NM
15. Distance from Proposed Location to Nearest Property or Lease Line 1970'	17. Acres Assigned to Well 320 N/2
16. Acres in Lease	
18. Distance from Proposed Location to Nearest Well, Drlg, Compl, or Applied for on this Lease 1200'	
19. Proposed Depth 8001'	20. Rotary or Cable Tools Rotary
21. Elevations (DF, FT, GR, Etc.) 6651' GR	22. Approx. Date Work will Start DRILLING OPERATIONS AUTHORIZED ARE SUBJECT TO COMPLIANCE WITH ATTACHED "GENERAL REQUIREMENTS".
23. Proposed Casing and Cementing Program See Operations Plan attached	
24. Authorized by: <u><i>Regina Case</i></u> Regulatory/Compliance Supervisor	Date <u>9-24-01</u>

PERMIT NO. \_\_\_\_\_ APPROVAL DATE \_\_\_\_\_  
APPROVED BY /s/ David J. Markiewicz TITLE \_\_\_\_\_ DATE SEP 12

Archaeological Report to be submitted

Threatened and Endangered Species Report to be submitted

NOTE: This format is issued in lieu of U.S. BLM Form 3160-3

Title 18 U.S.C. Section 1001, makes it a crime for any person knowingly and willfully to make to any department or agency of the United States any false, fictitious or fraudulent statements or presentations as to any matter within its jurisdiction.

NM000

District IV  
PO Box 2088, Santa Fe, NM 87504-2088

State of New Mexico  
Energy, Minerals & Natural Resources Department

OIL CONSERVATION DIVISION  
PO Box 2088  
Santa Fe, NM 87504-2088

Form C-102  
Revised February 21, 1994  
Instructions on back  
Appropriate District Office  
State Lease - 4 Copies  
Fee Lease - 3 Copies

☐ AMENDED REPORT

WELL LOCATION AND ACREAGE DEDICATION PLAT

*API Number 30-039- 27019		*Pool Code 72319/71599	*Pool Name Blanco Mesaverde/Basin Dakota	
*Property Code 7460	*Property Name SAN JUAN 28-5 UNIT			*Well Number 75M
*GRID No. 14538	*Operator Name BURLINGTON RESOURCES OIL & GAS COMPANY LP			*Elevation 6651'

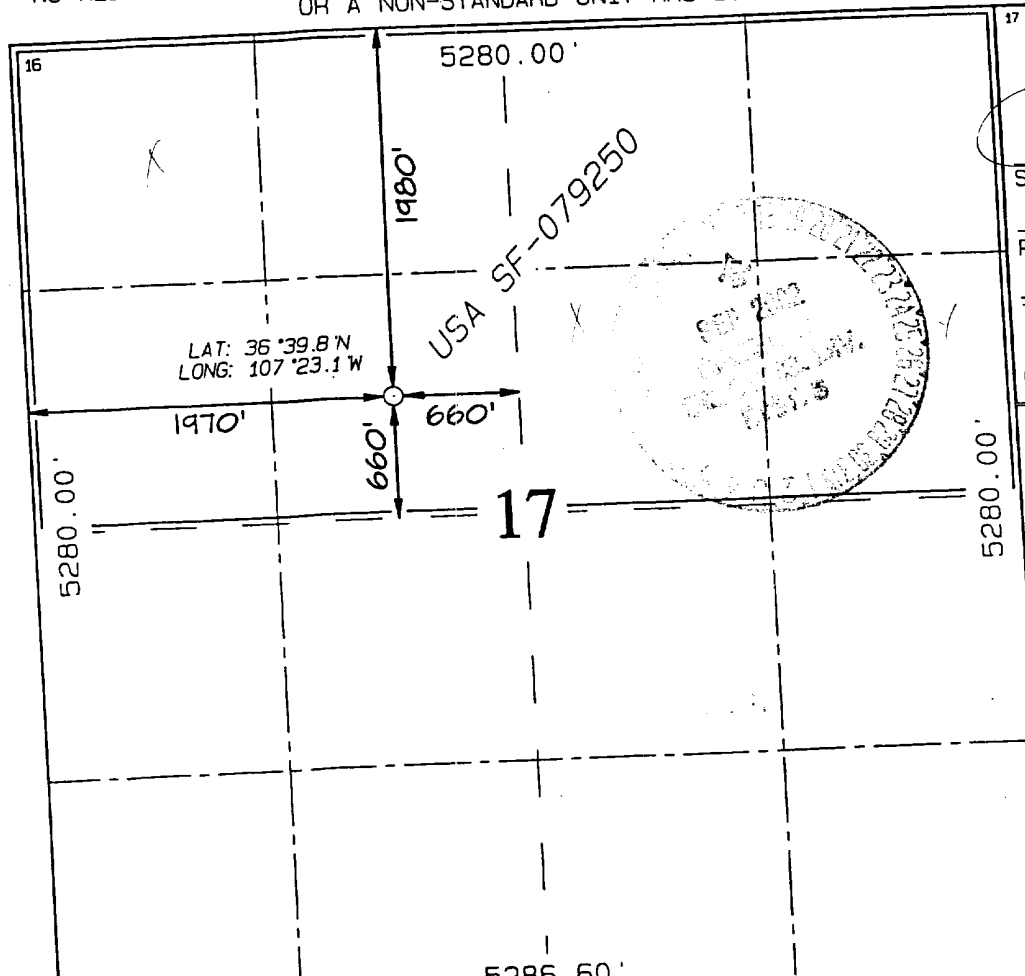
14538		10 Surface Location								County
UL or lot no.	Section	Township	Range	Lot Idn	Feet from the	North/South line	Feet from the	East/West line	RIO	
F	17	28N	5W		1980	NORTH	1970	WEST	ARRIBA	
112 Hole Location If Different From Surface										

11 Bottom Hole Location If Different From Surface									
UL or lot no.	Section	Township	Range	Lot Idn	Feet from the	North/South line	Feet from the	East/West line	County
12 Dedicated Acres					13 Joint or Infill	14 Consolidation Code	15 Order No.		
DK-N/320, MV-N/320					COMPLETION UNTIL ALL INTERESTS HAVE BEEN CONSOLIDATED				

DK-N/320, MV-N/320

NO ALLOWABLE WILL BE ASSIGNED TO THIS COMPLETION UNTIL ALL INTERESTS HAVE BEEN CONSOLIDATED OR A NON-STANDARD UNIT HAS BEEN APPROVED BY THE DIVISION

OPERATOR CERTIFICATION



17 OPERATOR CERTIFICATION

I hereby certify that the information contained herein is true and complete to the best of my knowledge and belief

Signature

Peggy Cole

Printed Name

Regulatory Supervisor

Title

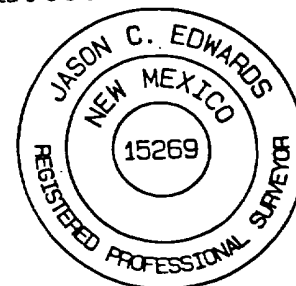
Date \_\_\_\_\_

**1B SURVEYOR CERTIFICATION**

I hereby certify that the well location shown on this plat was plotted from field notes of actual surveys made by me or under my supervision, and that the same is true and correct to the best of my belief.

Date of Survey: AUGUST 11, 200

Signature and Seal of Professional Surveyor



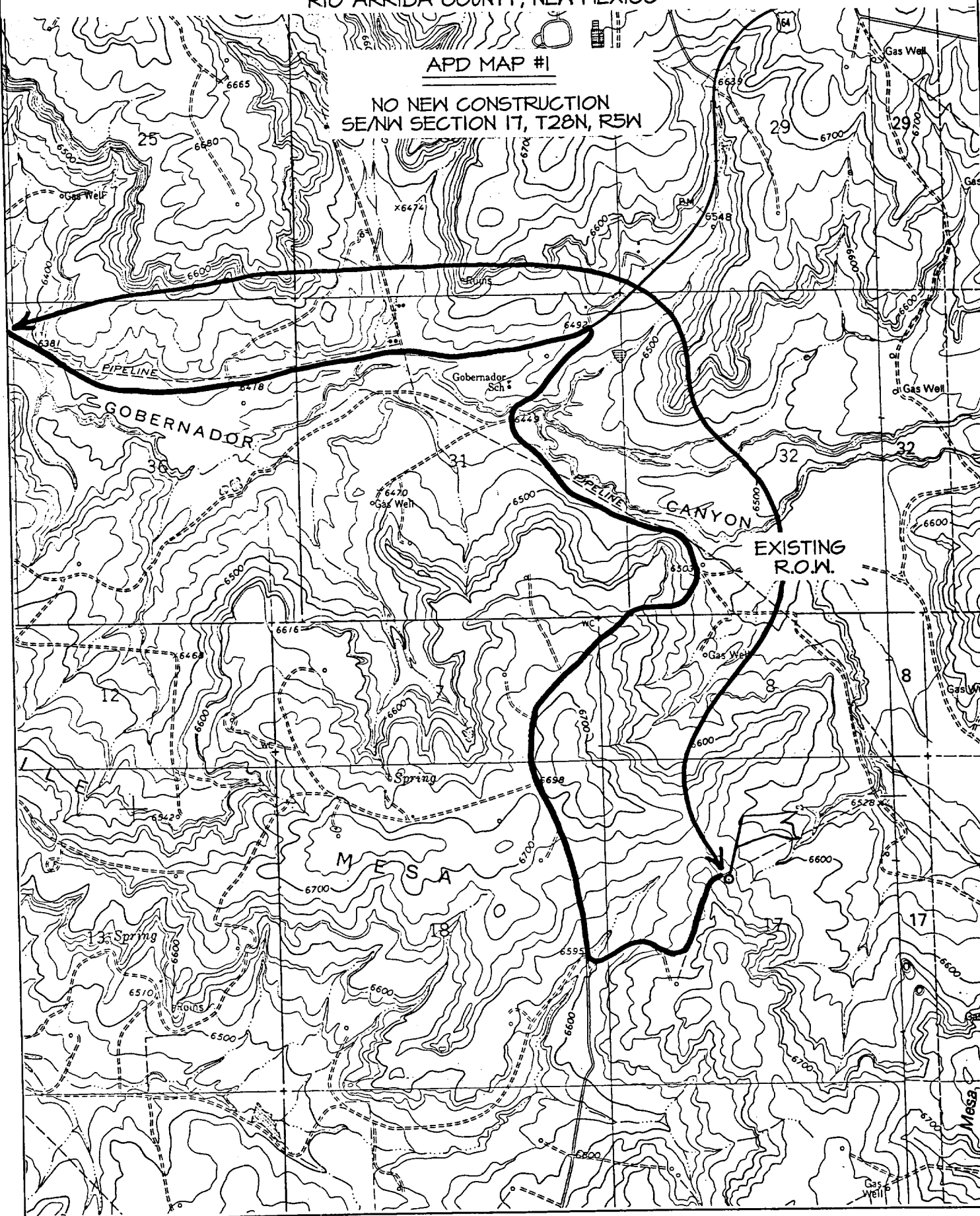
JASON C. EDWARD  
Certificate Number 15269

BURLINGTON RESOURCES OIL & GAS COMPANY SAN JUAN 28-5 UNIT #75M

1980' FNL & 1970' FWL, SECTION 17, T28N, R5W, N.M.P.M.  
RIO ARriba COUNTY, NEW MEXICO

APD MAP #1

NO NEW CONSTRUCTION  
SE/4 SECTION 17, T28N, R5W



## OPERATIONS PLAN

**Well Name:** San Juan 28-5 Unit #75M  
**Location:** 1980' FNL, 1970' FWL, Section 17, T-28-N, R-5-W  
Rio Arriba County, New Mexico  
Latitude 36° 39.8, Longitude 107° 23.1  
**Formation:** Blanco Mesa Verde/Basin Dakota  
**Elevation:** 6651' GL

<u>Formation Tops:</u>	<u>Top</u>	<u>Bottom</u>	<u>Contents</u>
Surface	San Jose	2803'	
Ojo Alamo	2803'	2963'	aquifer
Kirtland	2963'	3123'	
Fruitland	3123'	3539'	gas
Pictured Cliffs	3539'	3650'	gas
Lewis	3650'	4172'	gas
Intermediate TD	3750'		
Huerfanito Bentonite	4172'	4521'	gas
Chacra	4521'	5319'	gas
Massive Cliff House	5319'	5407'	gas
Menefee	5407'	5729'	gas
Point Lookout	5729'	6196'	gas
Mancos	6196'	6936'	gas
Gallup	6936'	7678'	gas
Greenhorn	7678'	7733'	gas
Graneros	7733'	7791'	gas
Dakota	7791'		gas
TD	8001'		

### Logging Program:

Mud logs - none  
Open hole - none  
Cased hole - CBL-CCL-GR - TD to surface  
Cores - none

### Mud Program:

<u>Interval</u>	<u>Type</u>	<u>Weight</u>	<u>Vis.</u>	<u>Fluid Loss</u>
0- 200'	Spud	8.4-9.0	40-50	no control
200- 3750'	LSND	8.4-9.0	30-60	no control
3750- 8001'	Air/N2	n/a	n/a	n/a

Pit levels will be visually monitored to detect gain or loss of fluid control.

### Casing Program (as listed, the equivalent, or better):

<u>Hole Size</u>	<u>Depth Interval</u>	<u>Csg. Size</u>	<u>Wt.</u>	<u>Grade</u>
12 1/4"	0' - 200'	9 5/8"	32.3#	WC-50
8 3/4"	0' - 3750'	7"	20.0#	J-55
6 1/4"	3650' - 8001'	4 1/2"	10.5#	K-55

### Tubing Program:

0' - 8001'      2 3/8"      4.7#      J-55

### BOP Specifications, Wellhead and Tests:

#### Surface to Intermediate TD -

11" 3000 psi minimum double gate BOP stack (Reference Figure #1). After nipple-up prior to drilling out surface casing, rams and casing will be tested to 600 psi for 30 minutes.

#### Intermediate TD to Total Depth -

11" 3000 psi minimum double gate BOP stack (Reference Figure #1). After nipple-up prior to drilling out intermediate casing, rams and casing will be tested to 1500 psi for 30 minutes.

#### Surface to Total Depth -

2" nominal, 3000 psi minimum choke manifold (Reference Figure #2).

**Completion Operations -**

7 1/16" 3000 psi double gate BOP stack (Reference Figure #3). After nipple-up prior to completion, pipe rams, casing and liner top will be tested to 2000 psi for 15 minutes.

**Wellhead -**

9 5/8" x 7" x 2 3/8" x 3000 psi tree assembly.

**General -**

- Pipe rams will be actuated once each day and blind rams will be actuated once each trip to test proper functioning.
- An upper kelly cock valve with handle available and drill string valves to fit each drill string will be available on the rig floors at all times.
- BOP pit level drill will be conducted weekly for each drilling crew.
- All BOP tests and drills will be recorded in daily drilling reports.
- Blind and pipe rams will be equipped with extension hand wheels.

**Cementing:**

9 5/8" surface casing - cement with 159 sx Class "B" cement with 1/4# flocele/sx and 3% calcium chloride (188 cu.ft. of slurry, 200% excess to circulate to surface). WOC 8 hrs. Test casing to 600 psi for 30 minutes.

Saw tooth guide shoe on bottom. Bowspring centralizers will be run in accordance with Onshore Order #2.

**7" intermediate casing -**

Lead w/392 sx 50/50 Class "G" TXI Liteweight cement with 2% calcium chloride, 2.5% sodium metasilicate, 10 pps Gilsonite and 0.5 pps Celloflake. Tail w/90 sx Class "G" 50/50 poz w/2% gel, 2% calcium chloride, 5 pps Gilsonite, 0.25 pps Celloflake (1127 cu.ft. of slurry, 100% excess to circulate to surface.) WOC minimum of 8 hours before drilling out intermediate casing. If cement does not circulate to surface, a CBL will be run during completion operations to determine TOC. Test casing to 1500 psi for 30 minutes.

See attached alternative intermediate lead slurry.

7" intermediate casing alternative two stage: Stage collar 3023'. First stage: cement with w/171 sx Class "G" 50/50 poz w/2% gel, 2% calcium chloride, 5 pps gilsonite, 0.25 pps Celloflake. Second stage: 352 sx 50/50 Class "G"/TXI Liteweight with 2% calcium chloride, 2.5% sodium metasilicate, 10 pps Gilsonite, 0.25 pps Celloflake (1127 cu.ft., 100% excess to circulate to surface).

Cement nose guide shoe on bottom with float collar spaced on top of shoe joint. Bowspring centralizers spaced every other joint off bottom, to the base of the Ojo Alamo at 2963'. Two turbolating centralizers at the base of the Ojo Alamo at 2963'. Bowspring centralizers spaced every fourth joint from the base of the Ojo Alamo to the base of the surface casing.

**4 1/2" Production Liner -**

Cement to cover minimum of 100' of 4 1/2" x 7" overlap. Lead with 434 sx 50/50 Class "G" Poz with 5% gel, 0.25 pps Celloflake, 5 pps Gilsonite (625 cu.ft.), 40% excess to cement 4 1/2" x 7" overlap). WOC a minimum of 18 hrs prior to completing.

Cement float shoe on bottom with float collar spaced on top of float shoe.