

UNITED STATES
DEPARTMENT OF THE INTERIOR
GEOLOGICAL SURVEY

APPLICATION FOR PERMIT TO DRILL, DEEPEN, OR PLUG BACK

1a. TYPE OF WORK

DRILL ☒DEEPEN ☐PLUG BACK ☐

b. TYPE OF WELL

OIL
WELL ☐GAS
WELL ☒

OTHER

SINGLE
ZONE ☒MULTIPLE
ZONE ☐

2. NAME OF OPERATOR

Beta Development Co.

3. ADDRESS OF OPERATOR

234 Petroleum Club Plaza, Farmington, New Mexico

4. LOCATION OF WELL (Report location clearly and in accordance with any State requirements.*)

At surface

1530/FSL 1145/FEL

At proposed prod. zone

14. DISTANCE IN MILES AND DIRECTION FROM NEAREST TOWN OR POST OFFICE*

10. DISTANCE FROM PROPOSED*

LOCATION TO NEAREST
PROPERTY OR LEASE LINE, FT.
(Also to nearest drlg. unit line, if any)

18. DISTANCE FROM PROPOSED LOCATION*

TO NEAREST WELL, DRILLING, COMPLETED,
OR APPLIED FOR, ON THIS LEASE, FT.

21. ELEVATIONS (Show whether DF, RT, GR, etc.)

6465° GR

16. NO. OF ACRES IN LEASE

955.33

19. PROPOSED DEPTH

7825°

17. NO. OF ACRES ASSIGNED
TO THIS WELL

354.79

20. ROTARY OR CABLE TOOLS

Rotary

22. APPROX. DATE WORK WILL START*

October 25, 1965

23.

PROPOSED CASING AND CEMENTING PROGRAM

SIZE OF HOLE	SIZE OF CASING	WEIGHT PER FOOT	SETTING DEPTH	QUANTITY OF CEMENT
12 1/4"	8 5/8"	24#	300°	175 sx
7 7/8"	4 1/2"	10.5 & 11.6#	7825°	Cement in 3 stages

Propose to cement production casing in 3 stages: 1st stage to protect the Dakota pay formation; 2nd stage to protect the MesaVerde formation; 3rd stage to protect the Pictured Cliffs and Kirtland formations.

Propose to perforate and sand - water - frac the Dakota pay formation.



IN ABOVE SPACE DESCRIBE PROPOSED PROGRAM: If proposal is to deepen or plug back, give data on present productive zone and proposed new productive zone. If proposal is to drill or deepen directionally, give pertinent data on subsurface locations and measured and true vertical depths. Give blowout preventer program, if any.

24.

Original signed by:
JOHN T. HAMPTON

SIGNED

TITLE

Manager

DATE

October 25, 1965

(This space for Federal or State office use)

PERMIT NO.

APPROVAL DATE

APPROVED BY

TITLE

CONDITIONS OF APPROVAL, IF ANY:

RECEIVED

DATE

OCT 29 1965

*See Instructions On Reverse Side

U. S. GEOLOGICAL SURVEY
FARMINGTON, N. M.

Instructions

General: This form is designed for submitting proposals to perform certain well operations, as indicated, on all types of lands and leases for appropriate action by either a Federal or a State agency, or both, pursuant to applicable Federal and/or State laws and regulations. Any necessary special instructions concerning the use of this form and the number of copies to be submitted, particularly with regard to local, area, or regional procedures and practices, either are shown below or will be issued by, or may be obtained from, the local Federal and/or State office.

Item 1: If the proposal is to redrill to the same reservoir at a different subsurface location or to a new reservoir, use this form with appropriate notations. Consult applicable State or Federal regulations concerning subsequent work proposals or reports on the well.

Item 4: If there are no applicable State requirements, locations on Federal or Indian land should be described in accordance with Federal requirements. Consult local State or Federal office for specific instructions.

Item 14: Needed only when location of well cannot readily be found by road from the land or lease description. A plat, or plats, separate or on this reverse side, showing the roads to, and the surveyed location of, the well, and any other required information, should be furnished when required by Federal or State agency offices.

Items 15 and 18: If well is to be, or has been directionally drilled, give distances for subsurface location of hole in any present or objective production zone.

Item 22: Consult applicable Federal or State regulations, or appropriate officials, concerning approval of the proposal before operations are started.

**NEW MEXICO OIL CONSERVATION COMMISSION
WELL LOCATION AND ACERAGE DEDICATION PLAT**

All distances must be from the outer boundaries of the Section

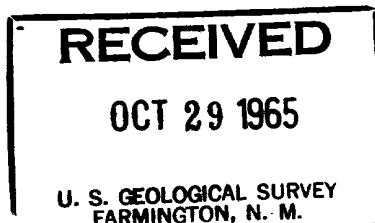
Operator BETA DEVELOPMENT COMPANY			Lease San Juan 28-6 Unit		Well No. 120
Unit Letter I	Section 9	Township 28 NORTH	Range 6 WEST	County RIO ARriba	
Actual Footage Location of Well: 1530 feet from the SOUTH line and 1145 feet from the EAST line					
Ground Level Elev. 6485.0	Producing Formation Dakota	Pool Basin Dakota	Dedicated Acreage: S/354.79 Acres		

1. Outline the acreage dedicated to the subject well by colored pencil or hachure marks on the plat below.
2. If more than one lease is dedicated to the well, outline each and identify the ownership thereof (both as to working interest and royalty).
3. If more than one lease of different ownership is dedicated to the well, have the interests of all owners been consolidated by communitization, unitization, force-pooling, etc?

(☒) Yes () No If answer is "yes," type of consolidation **Unitized**

If answer is "no," list the owners and tract descriptions which have actually consolidated. (Use reverse side of this form if necessary.)

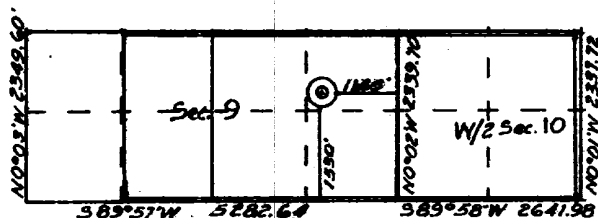
No allowable will be assigned to the well until all interests have been consolidated (by communitization, unitization, forced-pooling, or otherwise) or until a non standard unit, eliminating such interests, has been approved by the Commission.



Ref: GLO Plat dated January 6, 1917



Scale: 2" = 1 mile



San Juan Engineering Company

CERTIFICATION

I hereby certify that the information contained herein is true and complete to the best of my knowledge and belief.

Original signed by:
JOHN T. HAMPTON
Name
Manager
Position
Beta Development Co.
Company
October 25, 1965
Date

I hereby certify that the well location shown on this plat was plotted from field notes of actual surveys made by me or under my supervision, and that the same is true and correct to the best of my knowledge and belief.

April 8, 1965
Date Surveyed

Registered Professional Engineer and/or Land Surveyor
1463
Certificate No.

