

NEW MEXICO OIL CONSERVATION COMMISSION

SANTA FE, NEW MEXICO

MISCELLANEOUS NOTICES

Submit this notice in triplicate to the Oil Conservation Commission or its proper agent before the work specified is to begin. A copy will be returned to the sender on which will be given the approval, with any modifications considered advisable, or the rejection by the Commission or agent, of the plan submitted. The plan as approved should be followed, and work should not begin until approval is obtained. See additional instructions in the Rules and Regulations of the Commission.

Indicate nature of notice by checking below:

NOTICE OF INTENTION TO TEST CASING SHUT-OFF		NOTICE OF INTENTION TO SHOOT OR CHEMICALLY TREAT WELL	
NOTICE OF INTENTION TO CHANGE PLANS	X	NOTICE OF INTENTION TO PULL OR OTHERWISE ALTER CASING	
NOTICE OF INTENTION TO REPAIR WELL		NOTICE OF INTENTION TO PLUG WELL	
NOTICE OF INTENTION TO DEEPEN WELL			

Farmington, New Mexico

November 12, 1953

Place

Date

OIL CONSERVATION COMMISSION,
Santa Fe, New Mexico

Gentlemen:

Following is a notice of intention to do certain work as described below at the.....

El Paso Natural Gas Company

Brookhaven State

Well No. 6 in SE Unit

Company or Operator

Lease

NE SE of Sec. 36, T. 27N, R. 8W, N. M. P. M., South Blanco Extension Field.

San Juan

County.

FULL DETAILS OF PROPOSED PLAN OF WORK

FOLLOW INSTRUCTIONS IN THE RULES AND REGULATIONS OF THE COMMISSION

The elevation of this well is corrected to 6028' ground and 6038' derrick floor.



Approved..... 11-17, 1953
except at follows:

El Paso Natural Gas Company

Company or Operator

By

Position Petroleum Engineer

Send communications regarding well to

Name E. J. Coel

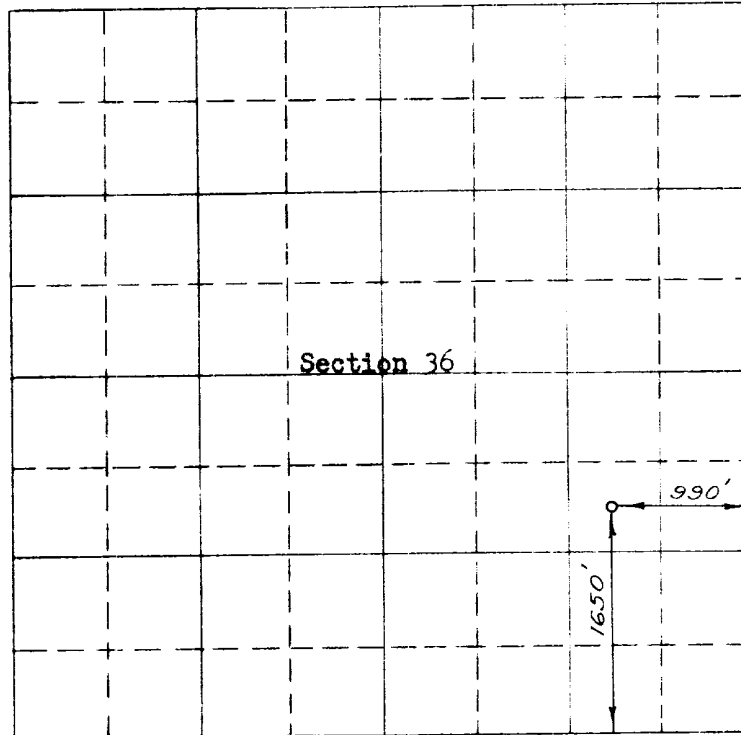
Address Box 997, Farmington, New Mexico

OIL CONSERVATION COMMISSION,
Original Signed Emery C. Arnold

By

Title Oil and Gas Inspector Dist. #3.

COMPANY M. and N. and Co. any
Well Name & No. Brookhaven-State No. 6 State Lease No. E-3148-2
Location 1650 ft. from the south line, 990 ft. from the east line
Being in NE $\frac{1}{4}$ of the SE $\frac{1}{4}$
Sec. 36, T 27N., R 6W., N.M.P.M., San Juan County, New Mexico
Ground Elevation 6028.12



Scale -- 4 inches equals 1 mile

Surveyed October 15, 19 53

This is to certify that the above plat was prepared from field notes of actual surveys made by me or under my supervision and that the same are true and correct to the best of my knowledge and belief.

C. O. Walker

Registered Professional
Engineer and Land Surveyor.

Seal:



Farmington, New Mexico

Note: Plat re-issued to show corrected elevation.

OIL CONSERVATION COMMISSION
AZTEC DISTRICT OFFICE

No. Copies Received 7

DISTRIBUTION

	NO. FURNISHED	
Operator	2	
Santa Fe	1	
Proration Office		
State Land Office	1	
U. S. G. S.	2	
Transporter		
File	1	✓