

## NEW MEXICO OIL CONSERVATION COMMISSION

SANTA FE, NEW MEXICO

## MISCELLANEOUS NOTICES

Submit this notice in triplicate to the Oil Conservation Commission or its proper agent before the work specified is to begin. A copy will be returned to the sender on which will be given the approval, with any modifications considered advisable, or the rejection by the Commission or agent, of the plan submitted. The plan as approved should be followed, and work should not begin until approval is obtained. See additional instructions in the Rules and Regulations of the Commission.

Indicate nature of notice by checking below:

NOTICE OF INTENTION TO TEST CASING SHUT-OFF		NOTICE OF INTENTION TO SHOOT OR CHEMICALLY TREAT WELL	
NOTICE OF INTENTION TO CHANGE PLANS	X	NOTICE OF INTENTION TO PULL OR OTHERWISE ALTER CASING	
NOTICE OF INTENTION TO REPAIR WELL		NOTICE OF INTENTION TO PLUG WELL	
NOTICE OF INTENTION TO DEEPEN WELL			

Farmington, New Mexico

November 12, 1953

Place

Date

OIL CONSERVATION COMMISSION,  
Santa Fe, New Mexico

Gentlemen:

Following is a notice of intention to do certain work as described below at the

El Paso Natural Gas Company

Brookhaven State

Well No. 4 in SW Unit

NW SW

Company or Operator  
of Sec. 36, T. 27N, R. 8W, N. M. P. M. South Blanco Extension Field.  
San Juan County.

## FULL DETAILS OF PROPOSED PLAN OF WORK

FOLLOW INSTRUCTIONS IN THE RULES AND REGULATIONS OF THE COMMISSION

The elevation of this well is corrected to 6225' ground and 6235' derrick floor.

Approved \_\_\_\_\_  
except at follows:

11-17, 1953

El Paso Natural Gas Company

Company or Operator

By

*Harold L. Kendrick*

Position

Petroleum Engineer

Send communications regarding well to

Name

E. J. Coel

Address

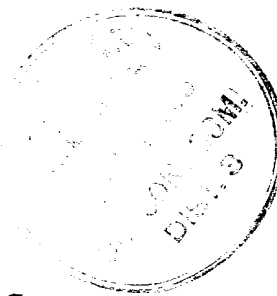
Box 997, Farmington, New Mexico

By

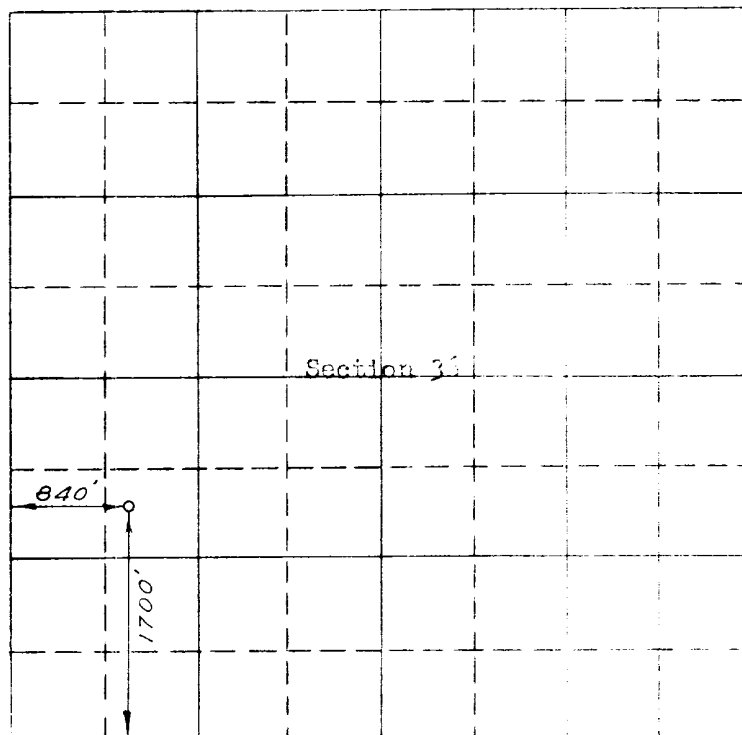
OIL CONSERVATION COMMISSION,  
Original Signed Emory C. Arnold

Title

Oil and Gas Inspector Dist. 46



COMPANY El Paso Natural Gas Company State \_\_\_\_\_  
Well Name & No. Brookhaven-State No. 4 Lease No. B-11125-49  
Location 1700 ft. from the south line, 840 ft. from the west line  
Being in NW $\frac{1}{4}$  of the SW $\frac{1}{4}$   
Sec. 36, T27N., R9W., N.M.P.M., San Juan County, New Mexico  
Ground Elevation 6225.13



Scale -- 4 inches equals 1 mile

Surveyed \_\_\_\_\_ October 20, 1955

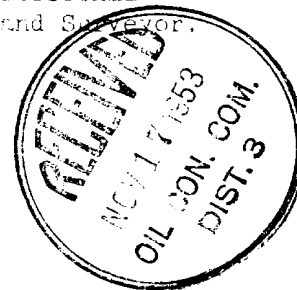
This is to certify that the above plat was prepared from field notes of actual surveys made by me or under my supervision and that the same are true and correct to the best of my knowledge and belief.

*C. O. Walker*

Registered Professional  
Engineer and Land Surveyor.

Seal:

Farmington, New Mexico



Note: Plat re-issued to show corrected elevation.

OIL CONSERVATION COMMISSION  
AZTEC DISTRICT OFFICE

No. Copies Received 1

DISTRIBUTION

Operator

Santa Fe

Proration Office

State Land Office

U. S. G. S.

Transporter

File

NO.  
FURNISHED

✓