

UNITED STATES
DEPARTMENT OF THE INTERIOR
BUREAU OF LAND MANAGEMENTFORM APPROVED
Budget Bureau No. 1004-0135
Expires: March 31, 1993

SUNDRY NOTICES AND REPORTS ON WELLS

Do not use this form for proposals to drill or to deepen or reentry to a different reservoir.
Use "APPLICATION FOR PERMIT--" for such proposals

SUBMIT IN TRIPLICATE

1. Type of Well

Oil Gas
☒ Well ☐ Well ☐ Other

2. Name of Operator

Merrion Oil & Gas Corporation (14634)

3. Address and Telephone No.

610 Reilly Avenue, Farmington, NM 87401-2634 (505) 327-9801

4. Location of Well (Footage, Sec., T., R., M., or Survey Description)

1980' fsl & 1980' fwl
K Section 36, T27N, R13W (NESW)

5. Lease Designation and Serial No.

SF-078391C

6. If Indian, Allottee or Tribe Name

7. If Unit or CA, Agreement Designation

8. Well Name and No.

Hanson B No. 2

9. API Well No.

30-045-06138

10. Field and Pool, or Exploratory Area

Gallegos Gallup

11. County or Parish, State

San Juan County,
New Mexico

12. CHECK APPROPRIATE BOX (s) TO INDICATE NATURE OF NOTICE, REPORT, OR OTHER DATA

TYPE OF SUBMISSION

- ☒
- Notice of Intent
-
- ☐
- Subsequent Report
-
- ☐
- Final Abandonment Notice

TYPE OF ACTION

- ☐
- Abandonment
-
- ☒
- Recompletion
-
- ☒
- Plugging Back
-
- ☐
- Casing Repair
-
- ☐
- Altering Casing
-
- ☐
- Other
-
- ☐
- Change of Plans
-
- ☐
- New Construction
-
- ☐
- Non-Routine Fracturing
-
- ☐
- Water Shut-Off
-
- ☐
- Conversion to Injection
-
- ☐
- Dispose Water

(Note: Report results of multiple completion on
Completion or Recompletion Report and Log form.)

13. Describe Proposed or completed Operations (Clearly state all pertinent details, and give pertinent dates, including estimated date of starting any proposed work. If well is directionally drilled, give subsurface locations and measured and true vertical depths for all markers and zones pertinent to this work.)*

The subject well appears to have collapsed casing above the Gallup at approximately 3325'. Merrion plans to plug the Gallup, put a cement plug across the Mesaverde top, circulate cement across the Fruitland coal, and complete the well in the Basin Fruitland coal formation. Enclosed is a procedure and a C-102 plat for your approval.

RECEIVED
DEC 15 1997
OIL CON. DIV.
DIST. 3

14. I hereby certify that the foregoing is true and correct

Signed Steven S. DunnTitle Drlg & Prod ManagerDate 12/4/97

(This space for Federal or State office use)

Approved By AS/ Duane W. Spencer

Title

Date

DEC 12 1997

Conditions of approval, if any:

Form C-102
Revised October 18, 1994
Instructions on back
Submit to Appropriate District Office
State Lease - 4 Copies
Fee Lease - 3 Copies

☐ AMENDED REPORT

WELL LOCATION AND ACREAGE DEDICATION PLAT

1 API Number 30-045-06138		2 Pool Code 71629		3 Pool Name Basin Fruitland Coal	
4 Property Code		5 Property Name HANSON B			
6 OGRID No. 014634		7 Operator Name MERRION OIL & GAS CORPORATION			
					8 Well Number 2
					9 Elevation
10 Surface Location					

¹⁰ Surface Location

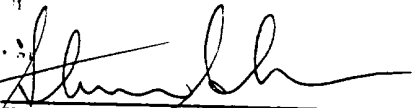
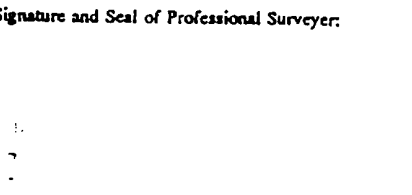
UL or lot no.	Section	Township	Range	Lot Idn	Feet from the	North/South line	Feet from the	East/West line	County
K	36	27N	13W	NESW	1980	south	1980	west	San Juan

1	2	3	4	5	6	7	8	9	10	11	12	13	14	15	16	17	18	19	20	21	22	23	24	25	26	27	28	29	30	31	32	33	34	35	36	37	38	39	40	41	42	43	44	45	46	47	48	49	50	51	52	53	54	55	56	57	58	59	60	61	62	63	64	65	66	67	68	69	70	71	72	73	74	75	76	77	78	79	80	81	82	83	84	85	86	87	88	89	90	91	92	93	94	95	96	97	98	99	100
" Bottom Hole Location If Different From Surface																																																																																																			

UL or lot no.	Section	Township	Range	Lot Idn	Feet from the	North/South line	Feet from the	East/West line	County
11 Dedicated Acres 320	12 Joint or Infill	14 Consolidation Code		15 Order No.					

NO ALLOWABLE WILL BE ASSIGNED TO THIS COMPLETION UNTIL ALL

NO ALLOWABLE WILL BE ASSIGNED TO THIS COMPLETION UNTIL ALL INTERESTS HAVE BEEN CONSOLIDATED
OR A NON-STANDARD UNIT HAS BEEN APPROVED BY THE DIVISION

16		17	
NM-16476		OPERATOR CERTIFICATION I hereby certify that the information contained herein is true and complete to the best of my knowledge and belief.  Signature Steven S. Dunn Printed Name Drig & Prod Manager Title 12/04/97 Date	
1980'		RECEIVED DEC 15 1997 OIL CON. DIV. DIST. 3	
SF-078391-C		18 SURVEYOR CERTIFICATION I hereby certify that the well location shown on this plat was plotted from field notes of actual surveys made by me or under my supervision, and that the same is true and correct to the best of my belief. Date of Survey Signature and Seal of Professional Surveyer:  Certificate Number	
1980'		07 DEC - 5 PM 2:20 RECEIVED	

Merrion Oil & Gas Corporation

RECEIVED
BLM

FRUITLAND COAL RECOMPLETION PROCEDURE

57 DEC -5 PM 2:18

December 2, 1997

070 PARIAH, NM

Well: **Hanson B-2**

Field: **Basin Fruitland Coal**

Location: 1980' fsl, 1980' fwl
Sec 36, T27N, R13W
San Juan County, New Mexico
By: George Sharpe

Elevation: 5960' RKB
5948' GL

Lease No: SF 078391-C

Project:

PLUG BACK GALLUP AND RECOMPLETE FRUITLAND

Procedure:

Prior to Move-in

1. Check for wellsite anchors.
2. Haul in frac tank. Load with water.

Pull Downhole Equipment

1. Move in workover rig. POOH w/ +/- 3325' rods.
2. RD wellhead. RU BOPs.
3. Attempt to trip out of hole w/ tbg. If stuck, determine free point w/ stretch.
4. Back off tbg above free point (assumed to be +/-3300').
5. TOH w/ free tbg.

Put Cement Plug Across Gallup Top

1. Set CICR above collapsed casing point. (+/-3300')
2. Sting into CICR.
3. Bullhead enough cement to fill csg to 3810' + 10% excess (+/-75 cu ft).

Squeeze Well Across Mesaverde Top

1. Perf sqz holes below MV at +/-2105'.
2. Set CICR at +/-2055'. Sting in w/ tbg.
3. Circulate +/-60 cu ft of cmt across MV top (will cover 100' w/ 100% excess).
4. Sting out of CICR. Circ 10 sx on top of CICR. TOH.

Squeeze Well Across Pictured Cliffs Top to Surface

1. Perf sqz holes below PC at +/-1260'.
2. Set CICR at +/-1240'. Sting in w/ tbg.
3. Establish circulation to surface.
4. Circulate +/-385 cu ft of cmt across PC top to surface (20% excess).
5. Sting out of CICR. Reverse circ clean w/ 2% Kcl. WOC.
6. Press test casing to 3000 psi. Swab csg down to 800'. TOH.

Perforate & Stimulate Fruitland Coal

1. RU perforators. Perf 905-06', 1032-33', 1097-98', 1116-17', 1128-29', and 1173-93' w/ 2SPF (60 holes).

2. TIH w/ 5-1/2" Pkr on tbg. Set above perfs.
3. Break down perfs w/ 500 gal 15% HCL & 90 balls. Swab back. TOH.
4. Frac well w/ procedure supplied at later date. **USE FILTERED 2% Kcl for acid & frac.**
5. Blow back frac. TIH w/ tbg. Insure no fill across perfs.
6. Land tbg below perfs. Run rods & pump if necessary. RDMOL.

MERRION OIL AND GAS CORP.
WELLBORE SCHEMATIC

WELL Hanson B-2

LOCATION 1950' FSL 1980' FWL
Sec 36, T 27N, R 13W

ENG: GFS DRFT: M.E.G.
DATE: 12-3-97

ELEVATION

GL: ~~5948~~ 5948'
KB: ~~5960~~ 5960'

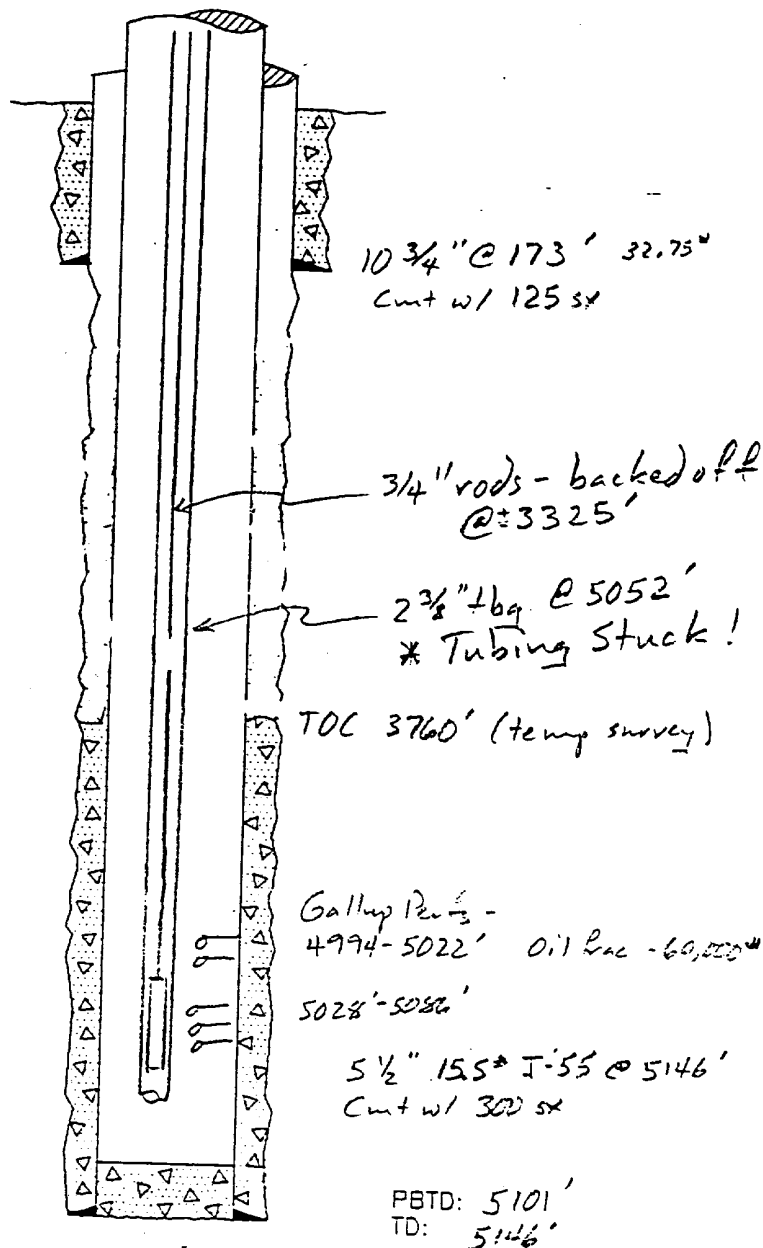
FORMATION TOPS:

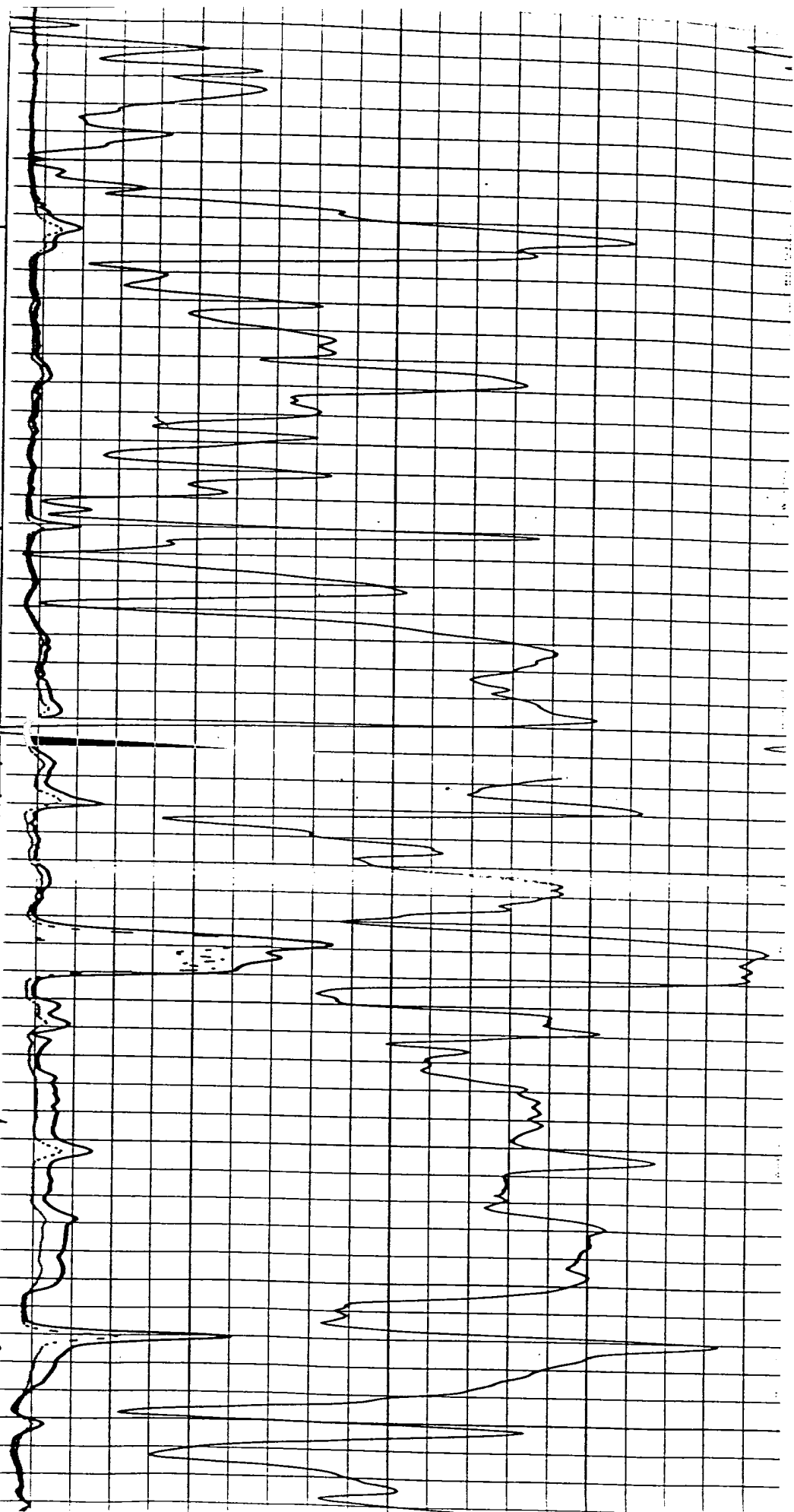
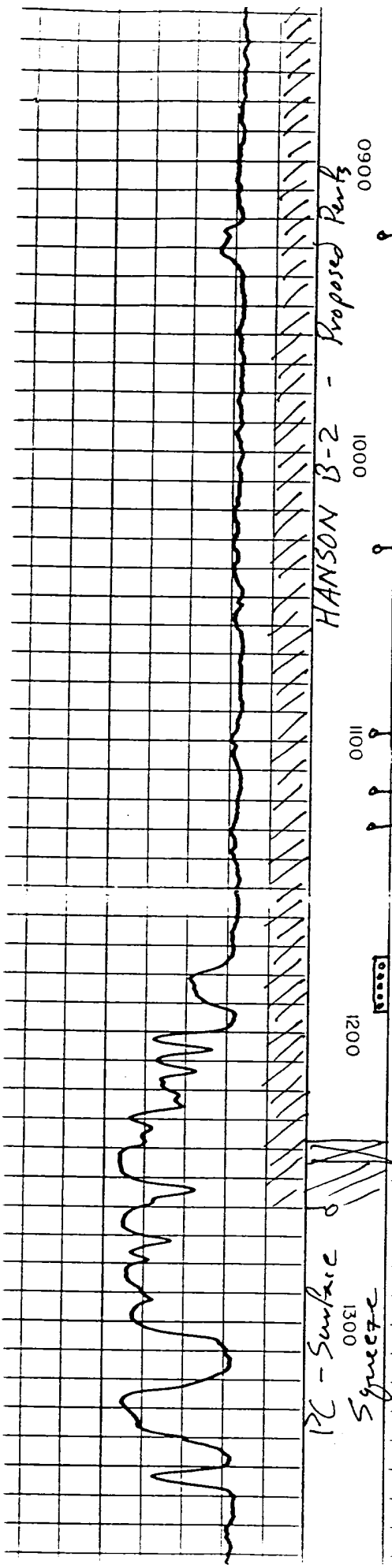
Kirtland - Surface
Fruitland 920'
Pictured Cliffs 1200'
Mesa Verde 2054'
Gallup 4815'

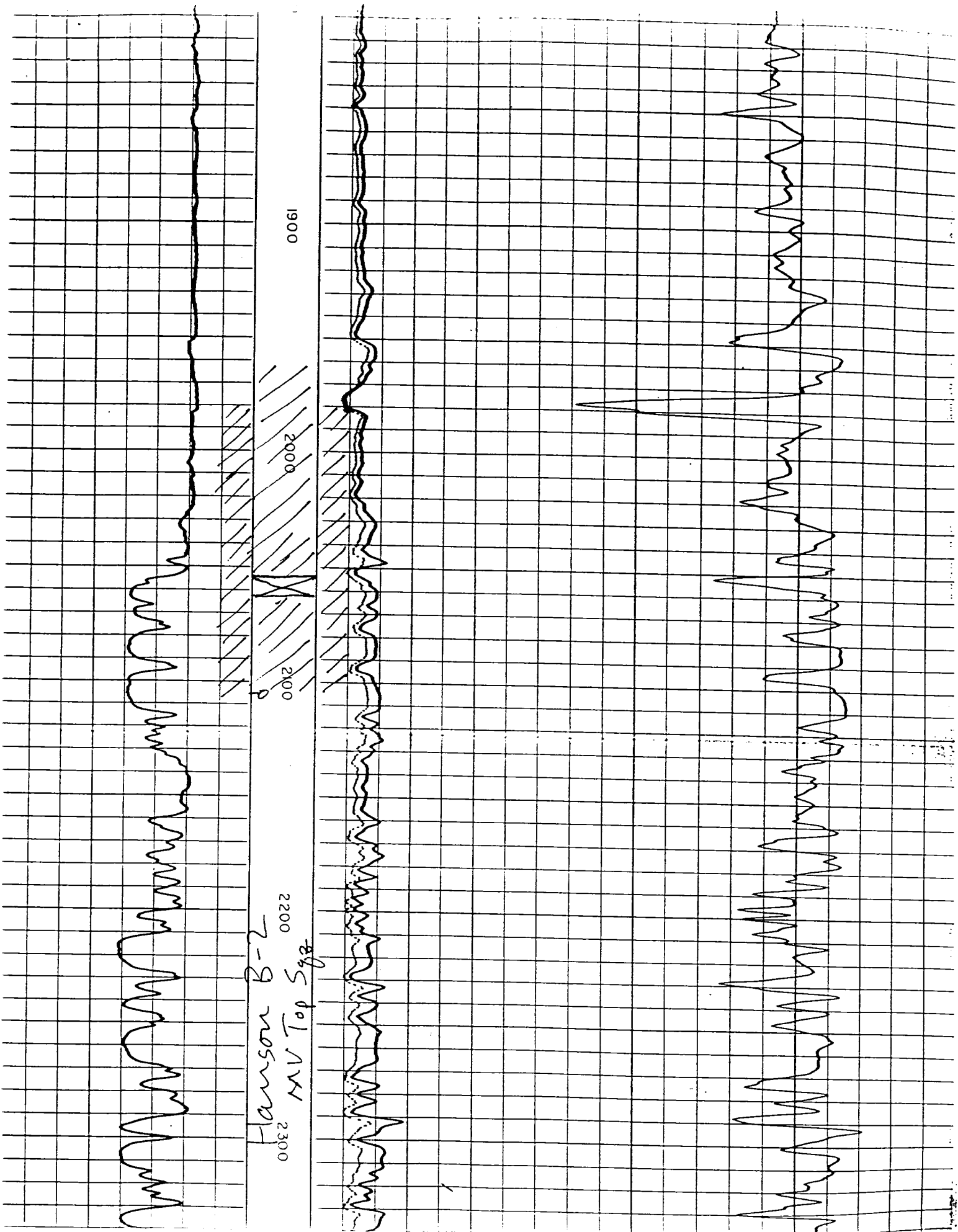
CAPACITIES:

B/F

5 1/2" - 8 1/2" annulus .0408
5 1/2" - 10 3/4" annulus .0715
2 3/8" - 5 1/2" annulus .0123
5 1/2" .0238
2 3/8" .00337









United States Department of the Interior

BUREAU OF LAND MANAGEMENT

Farmington District Office
1235 La Plata Highway
Farmington, New Mexico 87401

IN REPLY REFER TO:

**Attachment to Notice of
Intention to Workover**

**Re: Plug Back and Recomplete
Well: 2 Hanson B**

CONDITIONS OF APPROVAL

1. Attempts to recover the rods, pump and tubing are to be made and a cement plug placed from 5086' to 4763' before setting a cement retainer and squeezing.

A. Do not back off the tubing until an attempt to fish the remaining rods and downhole pump out of the 2 3/8" tubing is made. If the rods and pump can be retrieved and the tubing is stuck, establish an injection rate down the tubing and attempt to load the hole. Spot a cement plug from 5052' (end of tbg.) to 4763' plus 50% excess cement. (46 sks.)

B. If the rods and pump cannot be retrieved, back off the tubing and attempt to fish tubing, rods and pump. Run tubing back to 5086' and spot a cement plug from 5086' to 4763' plus 50 % excess cement. (55 sks.) Tag the top of the cement.

2. If the fishing attempts are unsuccessful, set a cement retainer within 50 to 100 feet of the collapsed casing and squeeze with adequate cement to fill the annular space between the 2 3/8' tubing and the 5 1/2' casing. (approximately 3300' to 5086' -- 100' of casing and 1686' annular space -- 160 sks.)

3. **Mike Flaniken** with the Farmington District Office is to be notified at least 24 hours before the workover operations commence (505) 599-8907.