

submitted in lieu of Form 3160-5

UNITED STATES
DEPARTMENT OF THE INTERIOR
BUREAU OF LAND MANAGEMENT

Sundry Notices and Reports on Wells

1. Type of Well
GAS

2. Name of Operator
MERIDIAN OIL

3. Address & Phone No. of Operator
PO Box 4289, Farmington, NM 87499 (505) 326-9700

4. Location of Well, Footage, Sec., T, R, M
851'FSL, 1057'FWL Sec.19, T-27-N, R-10-W, NMPM

5. Lease Number
SF-078022

6. If Indian, All. or
Tribe Name

7. Unit Agreement Name
Huerfano Unit

8. Well Name & Number
Huerfano Unit 74

9. API Well No.

10. Field and Pool
Fulcher Kutz PC/
Basin Ft Coal

11. County and State
Co, NM

12. CHECK APPROPRIATE BOX TO INDICATE NATURE OF NOTICE, REPORT, OTHER DATA

Type of Submission

Type of Action

<input checked="" type="checkbox"/> Notice of Intent	<input type="checkbox"/> Abandonment	<input type="checkbox"/> Change of Plans
<input type="checkbox"/> Subsequent Report	<input checked="" type="checkbox"/> Recompletion	<input type="checkbox"/> New Construction
<input type="checkbox"/> Final Abandonment	<input type="checkbox"/> Plugging Back	<input type="checkbox"/> Non-Routine Fracturing
	<input type="checkbox"/> Casing Repair	<input type="checkbox"/> Water Shut off
	<input type="checkbox"/> Altering Casing	<input type="checkbox"/> Conversion to Injectio
	<input type="checkbox"/> Other -	

13. Describe Proposed or Completed Operations

It is intended to add and complete by perforating and fracture stimulation the Fruitland Coal formation to this wellbore. Production from the Pictured Cliffs and Fruitland Coal will be commingled. Application is being amde to the NMOCD for commingling.

RECEIVED

JAN 26 1994

OIL CON.
DIST

GO FARMINGTON, NM

94 JAN 19 AM 8:12

RECEIVED
BLM

14. I hereby certify that the foregoing is true and correct.

Signed [Signature] (SD) Title Regulatory Affairs Date 12/30/93

(This space for Federal or State Office use)

APPROVED BY _____ Title _____

CONDITION OF APPROVAL, if any:

[Signature]

NMOCD

APPROVED

JAN 20 1994

DISTRICT MANAGER

Schedule to Accompany
District Office
State Lands - 4 copies
Fee Lands - 3 copies

State of New Mexico:
Energy, Minerals and Natural Resources Department

Form C-102
Revised 1-1-88

OIL CONSERVATION DIVISION
P.O. Box 2088
Santa Fe, New Mexico 87504-2088

51 JAN -7 PM 2:12
OIL CONSERVATION DIVISION

DISTRICT I
P.O. Box 1900, Hobbs, NM 88240

DISTRICT II
P.O. Drawer DD, Aztec, NM 88210

DISTRICT III
1000 Rio Basin Rd., Aztec, NM 87410

WELL LOCATION AND ACREAGE DEDICATION PLAT
All Distances must be from the center of the section

Operator Meridian Oil Inc.		Lease Huerfano		Well No. 74
Unit Letter M	Section 19	Township 27 North	Range 10 West	County San Juan
Amount Foreign Leases of Well: 851 feet from the South line and 1057 feet from the West line				
Current Level Elev. 5934'	Producing Formations Fruitland Coal/Pic.Cliffs	Pool Basin/Fulcher Kutz	Distance Acreage 334.08/160 Acres	
<p>1. Outline the acreage dedicated to the subject well by colored pencil or ink on the plat below.</p> <p>2. If more than one lease is dedicated to the well, outline each and identify the ownership thereof (such as an existing interest and royalty).</p> <p>3. If more than one lease of different ownership is dedicated to the well, have the interest of all owners been consolidated by agreement, purchase, lease-pooling, etc.?</p> <p><input checked="" type="checkbox"/> Yes <input type="checkbox"/> No If answer is "yes" type of consolidation unitization</p> <p>If answer is "no" list the owners and their descriptions which have actually been consolidated. (Use reverse side of this form if necessary.)</p> <p>No allowance will be assigned to the well until all interests have been consolidated (by communitization, unitization, lease-pooling, or otherwise) or until a non-consent unit, eliminating such interest, has been approved by the Division.</p>				

*Not resurveyed, prepared from a plat dated 10-24-56 by C.O. Walker.

OPERATOR CERTIFICATION

I hereby certify that the information contained herein is true and complete to the best of my knowledge and belief.

Peggy Bradfield

Printed Name
Regulatory Representative

Position
Meridian Oil Inc.

Company
12-30-93

Date

SURVEYOR CERTIFICATION

I hereby certify that the well location shown on this plat was pinned from field notes of actual surveys made by me or under my supervision and that the same is true and correct to the best of my knowledge and belief. 1-3-94

Date Surveyed
C. EDWARDS
Name
C. EDWARDS
Signature
4857
Professional Surveyor

Pertinent Data Sheet - Huerfano Unit #74

Location: 851' FSL, 1057' FWL, Section 19, T27N, R10W; San Juan County, New Mexico

Field: Fulcher Kutz Pictured Cliffs

Elevation: 5934' GR

TD: 1693'

PBTD: 1680'

Completed: 11-17-56

DP #: 51093A

Casing Record:

<u>Hole Size</u>	<u>Csg Size</u>	<u>Wt. & Grade</u>	<u>Depth Set</u>	<u>Cement</u>	<u>Top/Cement</u>
12 1/4"	9 5/8"	25.4# Armco	135'	100 sxs	Surface/Circ
8 3/4"	5 1/2"	15.5# J-55	1693'	150 sxs	TOC @ 690' TS

Tubing Record:

<u>Tbg Size</u>	<u>Wt. & Grade</u>	<u>Depth Set</u>
1 1/4"	2.3# Grade B	1655'

Formation Tops:

Ojo Alamo:	545'
Kirtland:	702'
Fruitland:	1346'
Pictured Cliffs:	1631'
Lewis:	1676'

Logging Record: ES, ML, Temp Survey

Stimulation:

Pictured Cliffs

Perf: 1632' - 1644', 1660' - 1671'.

Frac: w/28,494 gal water & 40,000# sand. Flush w/2300 gal.

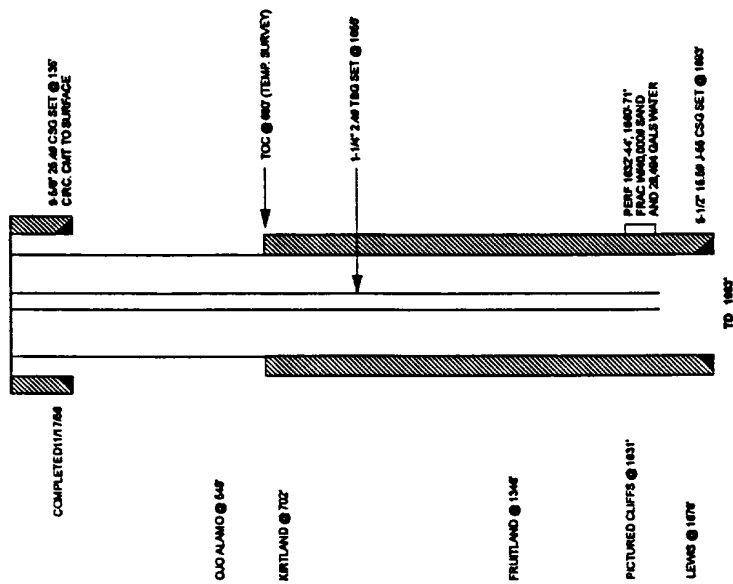
Workover History:

Production History:

Transporter: EPNG

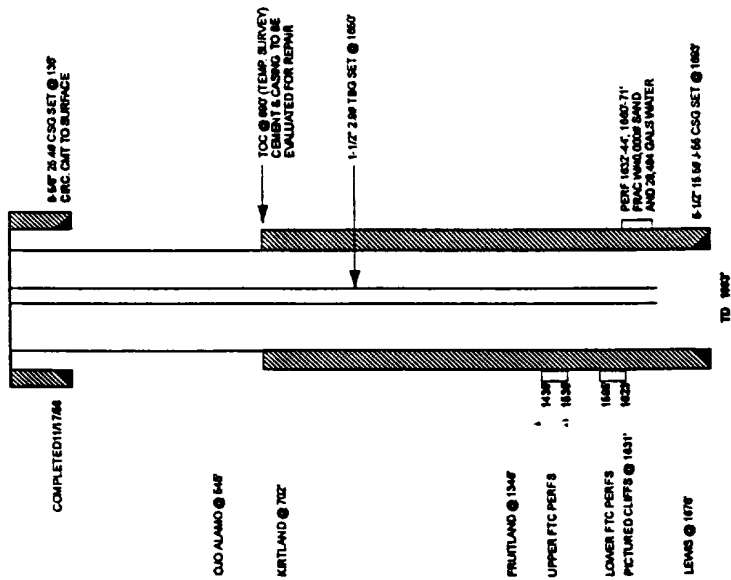
HUERFANO UNIT #74

CURRENT
PULCHER RUTZ PICTURED CLIFFS
UNIT #4 SEC. 16, T24N, R10W, SAN JUAN COUNTY, NM



HUERFANO UNIT #74

PROPOSED
PULCHER RUTZ PICTURED CLIFFS
UNIT #4 SEC. 16, T24N, R10W, SAN JUAN COUNTY, NM



**HUERFANO UNIT # 74
Recommend Completion Procedure
SW/4 Section 19 T27N R10W**

1. Test rig anchors and repair if necessary. Install 2-400 bbl frac tanks on location and fill with 2% KCl water. Filter all water to 25 microns.
 2. MOL and RU. Comply to all NMOCD, BLM and MOI rules & regulations. Hold safety meeting. ND wellhead. NU BOP. Test operation of rams. NU two relief lines.
 3. TOOH w/ 1655 1-1/4", tally and inspect.
 4. TIH w/ 4-3/4" bit and 5-1/2" casing scraper on 2-3/8" tbg and clean out 5-1/2" casing to PBTD @ 1680'. TOOH.
 5. Load hole w/ 15 bbls 2% KCl water. RU & RIH w/ CNL-CCL-GR and log from PBTD @ 1680' to 1250'
 6. RIH and wireline set 5-1/2" CIBP @ 1628', correlate depth with logs to ensure CIBP is set between the PC and basal FTC. Load hole w/ water. TOOH.
 7. TIH w/ fullbore packer and 2-3/8" tubing, set packer @1620', test CIBP to 3000 psi for 15 minutes. Test tubing/casing annulus to 500 psi for 15 minutes. Equalize pressure and unseat packer. TOOH.
 8. RU wireline and run CBL from PBTD (1628') to 150'. If CBL appears inadequate, re-run log with 750 psi surface pressure. If bond still appears unacceptable, contact production engineering. Send copy of CBL to production engineering.
 9. Insure both 400 bbl tanks on location are filled with 2% KCl water in preparation for Fruitland coal fracs. Filter all water to 25 microns.
-

HUERFANO UNIT # 74
Recommend Completion Procedure
SW/4 Section 19 T27N R10W
Page 2

*****LOWER COAL*****

10. RU wireline and perf the following coal interval w/ 3-3/8" HSC w/ 16.0 gram charges @ 4 SPF (correlate depths to CNL-CCL-GR log).

1595 - 1605'
1615 - 1623'

Total: 18 feet: 72 holes

11. TIH w/ 3-1/2" 9.3# N-80 FJ frac string and set fullbore pkr @ 1500'. Load backside w/ 2% KCl water.
12. RU treatment company for frac. Hold safety meeting with all personnel. Pressure test surface lines to 5000 psi. Fracture treat lower coal according to attached schedule w/ 70Q foam at 20 BPM with 65,000 lbs of 20/40 mesh Arizona sand. Tag all sand w/ 0.4 mCi/1000# Ir-192 tracer. Flush with 15 bbls 2% KCl water. Estimated treating pressure is 1500 psi. MAXIMUM PRESSURE IS LIMITED TO 4000 PSI! Monitor backside and braden head pressures during frac. Monitor bottomhole and surface treating pressure, rate, foam quality and sand concentration with computer van. Frac during daylight only.
13. SI well for 3 hours for gel break.
14. After gel break, open well through choke manifold & monitor flow. Flow @ 20 bbls/hr, or less if sand is observed.
15. Re-fill 400 bbl frac tanks with 2% KCl water and filter to 25 microns.
16. When well ceases to flow, TOOH w/ pkr and frac string. TIH w/ 2-3/8" tbg and csg scraper to 1580'. TOOH. TIH and set 5-1/2" RBP @ 1570'.

*****UPPER COAL*****

17. RU wireline and perf the following coal interval w/ 3-3/8" HSC w/ 16.0 gram charges @ 4 SPF (correlate depths to CNL-CCL-GR log).

1435 - 1441', 1452 - 1457'
1496 - 1500', 1530 - 1536'

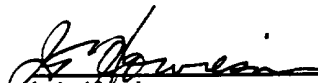
Total: 21 feet: 84 holes

18. TIH w/ SAP tool, isolate and break down w/ 15% HCl, 2% KCL water, and N2 (70 Q) according to the attached procedure::

HUERFANO UNIT # 74
Recommend Completion Procedure
SW/4 Section 19 T27N R10W
Page 3

18. TIH w/ frac string and set pkr @ 1550'. Pressure test BP to 3000 psi surface pressure.
19. Release pkr, PU to 1350', set pkr @ approx 1350', and load backside.
20. RU treatment company for frac. Hold safety meeting with all personnel. Pressure test surface lines to 5000 psi. Fracture treat upper coal according to attached schedule w/ 70Q foam at 30 BPM with 75,000 lbs of 20/40 mesh Arizona sand. Tag all sand w/ 0.4 mCi/1000# Ir-192 tracer. Flush with 15 bbls 2% KCl water. Estimated treating pressure is 1800 psi. MAXIMUM PRESSURE IS LIMITED TO 4000 PSII Monitor backside and braden head pressures during frac. Monitor bottomhole and surface treating pressure, rate, foam quality and sand concentration with computer van. Frac during daylight only.
21. SI well for 3 hours for gel break.
22. After gel break, open well through choke manifold & monitor flow. Flow @ 20 bbls/hr, or less if sand is observed.
23. When well ceases to flow, TOOH w/ pkr and frac string. TIH w/ retrieving head on 2-3/8" tbg and clean out upper zone until sand flow stops. Take Pitot gauge before releasing BP. Release RBP set @ 1570' and TOOH.
24. TIH w/ 2 3/8" tbg open ended and clean out lower coal until sand stops . After clean up, flow test the Coal for 24 hrs, taking pitot gauges every 6 hrs. Take final Pitot gauge and gas & water samples. TOOH
25. TIH w/ 2-3/8" tbg and 4 3/4" bit, clean out to PBTD. Blow well clean. Drill out CIPB set @ 1628', clean out to open hole TD. TOOH laying down 2-3/8" tbg.
26. RU wireline and run After - Frac - GR log from 1680' to 1300'.
27. TIH w/ 1650' of 1-1/2" tbg w/ standard seating nipple one jt off bottom and pump-off plug on bottom. Land tbg string.
28. ND BOP and NU independent wellhead. Pump off plug. Take final Pitot gauge. Rig down & release rig.

Approve:


J. A. Howieson

VENDORS:

Wireline:	Schlumberger	325-5006
Fracturing & Acid	WESTERN	327-6222
Isolation Tool	Baker Services	325-0216
RA Tagging:	Protechnics	326-7133

SBD

UPPER FRUITLAND COAL BREAKDOWN TREATMENT PROCEDURE

1. Rig up WESTERN SERVICE Equipment to Acidize down 2 3/8 tbq.
@ 5 BPM and an estimated surface treating pressure of 1300 PSI.
2. Hold pre-job safety meeting with all Western and Meridian personnel.
3. Test all lines to 5,000 psi.
4. Acidize four intervals with a total of 2940 gallons of 70 Q 15% Foamed HCl using a SAP tool according to the following schedule.
 - a) Pump 840 gals 70 Q Foamed HCl across the interval 1530-1536.
 - b) Flush with 250 gals 70 Q Foamed 2% KCl water.
 - c) Flow treatment fluid back through SAP tool.
 - d) Move SAP tool up hole and prepare to acidize second interval.
 - e) Pump 560 gals 70 Q Foamed HCl across the interval 1496-1500.
 - f) Flush with 244 gals 70 Q Foamed 2% KCl water.
 - g) Flow treatment fluid back through SAP tool.
 - h) Move SAP tool up hole and prepare to acidize the third interval.
 - i) Pump 700 gals 70 Q Foamed HCl across the interval 1452-1457.
 - j) Flush with 237 gals 70 Q Foamed 2% KCl water.
 - k) Flow treatment fluid back through SAP tool.
 - l) Move SAP tool up hole and prepare to acidize the fourth interval.
 - m) Pump 840 gals 70 Q Foamed HCl across the interval 1435-1441.
 - n) Flush with 234 gals 70 Q Foamed 2% KCl water.
 - o) Flow treatment fluid back through SAP tool.
 - p) POOH and prepare for fracture treatment.

 ALL PRODUCTS SHOULD BE TESTED FOR EMULSION TENDENCIES "Compatability"
 PRIOR TO TREATMENT.
