

ACREAGE REDEDICATION
NEW MEXICO OIL CONSERVATION COMMISSION
WELL LOCATION AND ACREAGE DEDICATION PLAT

Form C-102
Supersedes C-128
Effective 1-1-55

All distances must be from the outer boundaries of the Section.

Operator Austral Oil Company Incorporated			Lease Huerfanito		Well No. 7
Unit Letter 0	Section 21	Township 27	Range 9W	County San Juan	
Actual Footage Location of Well: 1,450 feet from the East line and 1,190 feet from the South line					
Ground Level Elev. 6,290'	Producing Formation Dakota		Pool Basin		Dedicated Acreage: 320 Acres

1. Outline the acreage dedicated to the subject well by colored pencil or hachure marks on the plat below.
2. If more than one lease is dedicated to the well, outline each and identify the ownership thereof (both as to working interest and royalty).
3. If more than one lease of different ownership is dedicated to the well, have the interests of all owners been consolidated by communitization, unitization, force-pooling, etc? **NA**

☐ Yes ☐ No If answer is "yes," type of consolidation -----

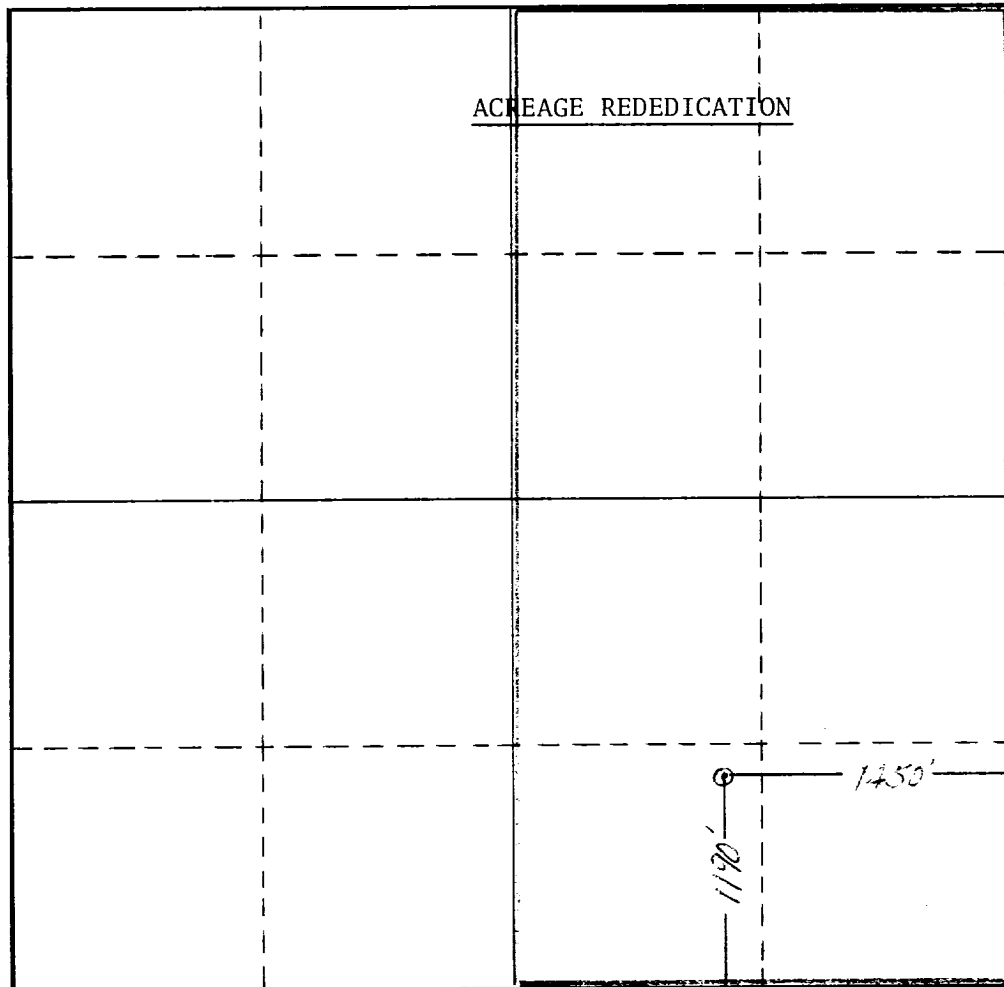
If answer is "no," list the owners and tract descriptions which have actually been consolidated. (Use reverse side of this form if necessary.) -----

No allowable will be assigned to the well until all interests have been consolidated (by communitization, unitization, forced-pooling, or otherwise) or until a non-standard unit, eliminating such interests, has been approved by the Commission.

RECEIVED
DEC 17 1965

U. S. GEOLOGICAL SURVEY
FARMINGTON, N.M.

ACREAGE REDEDICATION



CERTIFICATION

I hereby certify that the information contained herein is true and complete to the best of my knowledge and belief.

Name

C. R. Geffs

Position

Ass't. Drlg. & Prod. Supt.

Company

Austral Oil Company Inc.

Date

December 13, 1965

I hereby certify that the well location shown on this plat was plotted from field notes of actual surveys made by me or under my supervision, and that the same is true and correct to the best of my knowledge and belief.

RECEIVED
DEC 20 1965
OIL CON. COM.
DIST. 3

Date Surveyed

April 20, 1964

Registered Professional Engineer
and/or Land Surveyor

Original signed by
Stephen H. Kinney

Certificate No.

803