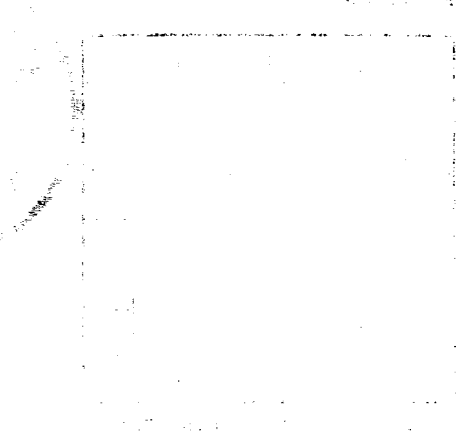


1. The following information was obtained from the records of the Department of the Interior, Bureau of Land Management, regarding the land in question:

UNITED STATES
DEPARTMENT OF THE INTERIOR
BUREAU OF LAND MANAGEMENT

CONTRACT NO. 100-1000000000000000



The land in question is located in the State of California, County of San Diego, and is situated within the boundaries of the San Diego National Monument. The land is owned by the United States of America, and is being offered for sale to the highest bidder.

The land is situated in the vicinity of the town of San Diego, and is adjacent to the San Diego River. The land is approximately 100 acres in size, and is located within the boundaries of the San Diego National Monument.

LAND OFFERED FOR SALE

The land is situated in the vicinity of the town of San Diego, and is adjacent to the San Diego River. The land is approximately 100 acres in size, and is located within the boundaries of the San Diego National Monument.

LAND OFFERED FOR SALE

The land is situated in the vicinity of the town of San Diego, and is adjacent to the San Diego River. The land is approximately 100 acres in size, and is located within the boundaries of the San Diego National Monument.

The land is situated in the vicinity of the town of San Diego, and is adjacent to the San Diego River. The land is approximately 100 acres in size, and is located within the boundaries of the San Diego National Monument.

The land is situated in the vicinity of the town of San Diego, and is adjacent to the San Diego River. The land is approximately 100 acres in size, and is located within the boundaries of the San Diego National Monument.

The land is situated in the vicinity of the town of San Diego, and is adjacent to the San Diego River. The land is approximately 100 acres in size, and is located within the boundaries of the San Diego National Monument.

The land is situated in the vicinity of the town of San Diego, and is adjacent to the San Diego River. The land is approximately 100 acres in size, and is located within the boundaries of the San Diego National Monument.

The land is situated in the vicinity of the town of San Diego, and is adjacent to the San Diego River. The land is approximately 100 acres in size, and is located within the boundaries of the San Diego National Monument.

LAND OFFERED FOR SALE

The land is situated in the vicinity of the town of San Diego, and is adjacent to the San Diego River. The land is approximately 100 acres in size, and is located within the boundaries of the San Diego National Monument.

The land is situated in the vicinity of the town of San Diego, and is adjacent to the San Diego River. The land is approximately 100 acres in size, and is located within the boundaries of the San Diego National Monument.

The land is situated in the vicinity of the town of San Diego, and is adjacent to the San Diego River. The land is approximately 100 acres in size, and is located within the boundaries of the San Diego National Monument.

The land is situated in the vicinity of the town of San Diego, and is adjacent to the San Diego River. The land is approximately 100 acres in size, and is located within the boundaries of the San Diego National Monument.

The land is situated in the vicinity of the town of San Diego, and is adjacent to the San Diego River. The land is approximately 100 acres in size, and is located within the boundaries of the San Diego National Monument.

The land is situated in the vicinity of the town of San Diego, and is adjacent to the San Diego River. The land is approximately 100 acres in size, and is located within the boundaries of the San Diego National Monument.

The land is situated in the vicinity of the town of San Diego, and is adjacent to the San Diego River. The land is approximately 100 acres in size, and is located within the boundaries of the San Diego National Monument.

The land is situated in the vicinity of the town of San Diego, and is adjacent to the San Diego River. The land is approximately 100 acres in size, and is located within the boundaries of the San Diego National Monument.