

NEW MEXICO OIL CONSERVATION COMMISSION

Well Location and Acreage Dedication Plat

Section A.

Date January 13, 1959

Operator EL PASO NATURAL GAS PRODUCTS CO. Lease FRONTIER SF-080382-A
Well No. 1-C Unit Letter D Section 16 Township 27 N Range 11 W NMPN
Located 890 Feet From north Line, 890 Feet From west Line
County San Juan G. L. Elevation 6217 Dedicated Acreage 320 Acres
Name of Producing Formation Dakota Pool Undesignated

1. Is the Operator the only owner* in the dedicated acreage outlined on the plat below?
Yes X No .
2. If the answer to question one is "no," have the interests of all the owners been consolidated by communitization agreement or otherwise? Yes No . If answer is "yes," Type of Consolidation
3. If the answer to question two is "no," list all the owners and their respective interests below:

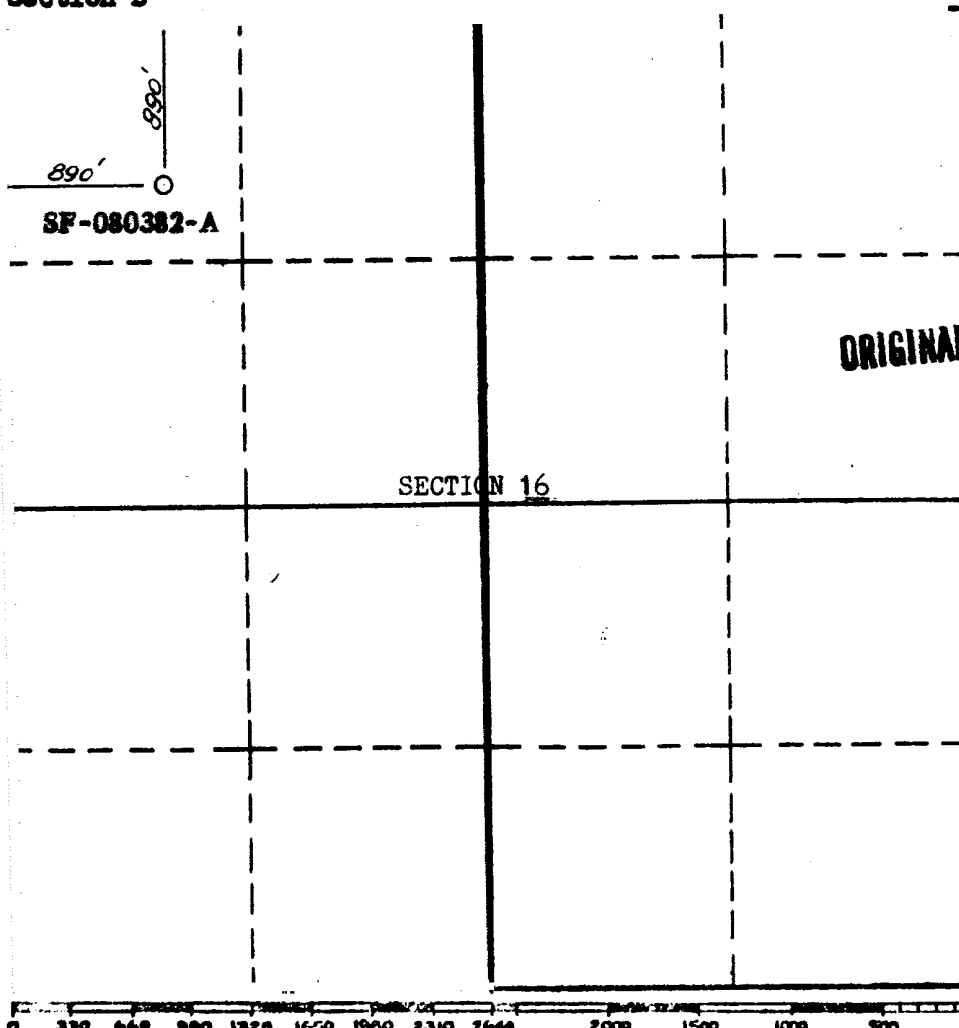
PLAT REISSUED TO SHOW CHANGE IN DEDICATED ACREAGE.

Owner

Land Description



Section B



This is to certify that the information in Section A above is true and complete to the best of my knowledge and belief.

El Paso Natural Gas Products Co.
(Operator)

ORIGINAL SIGNED BY: JOSEPH E. KREGER
(Representative)

Box 1565, Farmington, N. M.
Address

This is to certify that the well location shown on the plat in Section B was plotted from field notes of actual surveys made by me or under my supervision and that the same is true and correct to the best of my knowledge and belief.

Date Surveyed Sept 9, 1958

Stephen H. Kinney
STEPHEN H. KINNEY
Registered Professional
Engineer and/or Land Surveyor.

Certificate No. 800

(See instructions for completing this form on the reverse side)

OIL CONSERVATION COMMISSION**AZTEC DISTRICT OFFICE**

No. Copies Received

5

DISTRIBUTION

	NO. FURNISHED	
Operator	2	
Santa Fe	1	
Proration Office		
State Land Office		
U. S. G. S.	1	
Transporter		
File	1	✓