

UNITED STATES
DEPARTMENT OF THE INTERIOR
BUREAU OF LAND MANAGEMENT

FORM APPROVED
Budget Bureau No. 1004-0135
Expires: March 31, 1993

SUNDRY NOTICES AND REPORTS ON WELLS

Do not use this form for proposals to drill or to deepen or reentry to a different reservoir.
Use "APPLICATION FOR PERMIT - " for such proposals

1. Type of Well
☐ Oil Well ☒ Gas Well ☐ Other

2. Name of Operator Attention:
AMOCO PRODUCTION COMPANY WAYNE BRANAM, RM 1220

3. Address and Telephone No.
P.O. Box 800, Denver, Colorado 80201 (303) 830-4912

4. Location of Well (Footage, Sec., T., R., M., or Survey Description)
567 FSL 1527FWL Sec. 24 T 28N R 8W

5. Lease Designation and Serial No.

NM013860a

6. If Indian, Allottee or Tribe Name

7. If Unit or CA, Agreement Designation

8. Well Name and No.

RUSSELL A #1

9. API Well No.

3004507241

10. Field and Pool, or Exploratory Area

BLANCO MESAVERDE

11. County or Parish, State

SAN JUAN NM

12. CHECK APPROPRIATE BOX(s) TO INDICATE NATURE OF NOTICE, REPORT, OR OTHER DATA

TYPE OF SUBMISSION

TYPE OF ACTION

- ☒ Notice of Intent
☐ Subsequent Report
☐ Final Abandonment Notice

- ☐ Abandonment
☐ Recompletion
☐ Plugging Back
☐ Casing Repair
☐ Altering Casing
☒ Other SIDETRACK

- ☐ Change of Plans
☐ New Construction
☐ Non-Routine Fracturing
☐ Water Shut-Off
☐ Conversion to Injection
☐ Dispose Water

(Note: Report results of multiple completion on Well Completion or Recompletion Report and Log form.)

13. Describe Proposed or Completed Operations (Clearly state all pertinent details, and give pertinent dates, including estimated date of starting any proposed work. If well is directionally drilled, give subsurface locations and measured and true vertical depths for all markers and zones pertinent to this work.)*

AMOCO PROPOSES TO SIDETRACK THIS WELL PER THE ATTACHED PROCEDURE.

RECEIVED
NOV - 3 1994
OIL CON. DIV.
DIST. 3

SEE ATTACHED FOR
CONDITIONS OF APPROVAL

OCT 20 11:10:55
OCT 20 11:10:55
OCT 20 11:10:55

14. I hereby certify that the foregoing is true and correct

Signed

Title

BUSINESS ANALYST

Date

10-18-1994

(This space for Federal or State office use)

Approved by

Title

Conditions of approval, if any:

APPROVED

OCT 26 1994

Title 18 U.S.C. Section 1001, makes it a crime for any person knowingly and willfully to make to any department or agency of the United States any false, fictitious or fraudulent statements or representations as to any matter within its jurisdiction.

* See Instructions on Reverse Side

NM000

THE
NATIONAL
ARCHIVES

U.S. NATIONAL ARCHIVES
APP. 1000
RESEARCHER'S GUIDE

SIDETRACK PROCEDURE

Russell A #1 MV

567' FSL 1527 FWL, Sec. 24N, T28N, R8W

Orig. Comp. 6/51

TD = 4850'

Version #1, October 14, 1994

This MV well was drilled to 4110' and 7" casing was set. The well was then frac'd using 2060 quarts of nitroglycerin. Therefore, size of hole below 4110' is questionable. The TOC, per Temperature Survey, is 1890'.

We will pull/chemically cut the tubing, sidetrack, and set 4 1/2" production casing to surface. The MV will then be frac'd in two stages (the Cliff House/Menefee will be perforated limited entry; therefore, both fracs should be performed the same day).

1. Check location for anchors. Install if necessary. Test anchors. Record TP, SICP and SIBHP.
2. MIRUDR. Blow well down. NDWH. NUBOP/Test BOP.
3. TOH with 2" tubing and inspect. Replace any bad joints. If unable to remove tubing free point and back off below 7" casing shoe.
4. Pick up casing scraper and work string. Run scraper to PBTD. Set cmt ret. at 3200' and pressure test BOPs and 7" casing to 80% of burst rating.
5. Set anchor and whipstock on BP.
6. Rig up air package and dry hole.
7. Pick up tricone button bit (6 1/4") with a near bit stabilizer: attempt to increase deviation to approximately 10 degrees by forcing bit with the building assembly.
8. Drill to a TVD of 5000' with air.
9. Run 4 1/2" casing from surface to TD. Cement in one stage (air drilled hole) with Class B, 50/50 POZ, 2% gel, .86% Halad-344 with 5#/sx Gilsonite, and 1/4 #/sx flocele. Cement in two stages if mud drilled.
10. WOC. RDMODR.
11. MIRUSU. Drill out cement to PBTD (4285'). Run a GR/CCL/CBL from PBTD to 4000' to determine if squeeze work will be necessary prior to fracture stimulation. Fax results to Lara Kwartin in Denver so she can determine perms.

12. Blow well dry with air to ?' (100' above top perf). RU lubricator and perforate the Point Lookout, under balanced with a 3 1/8" casing gun, 2 JSPF, 90 degree phasing 12 1/2 g charges.

PERFORATE POINT LOOKOUT

13. Fracture stimulate according to the attached Point Lookout frac schedule. DO NOT FLOW BACK AT THIS TIME.
14. TIH with a RBP and set above Point Lookout. Cap with sand.
15. Blow dry with air to ?' (100' above top perf).
16. RU lubricator and perforate the Cliff House/Menefee, under balanced with a 3 1/8" casing gun, 1 JSPF, 12 1/2 g charges.

PERFORATE CLIFF HOUSE/MENEFEE

17. Fracture stimulate according to the attached Cliff House/Menefee frac schedule.
18. Flow back well until it dies.
19. TOH with RBP.
20. Clean out to PBTD with air. TOH with work string.
21. Once sand entry has ceased, land tubing at depth to be determined with a mule shoe on bottom and a seating nipple one joint off of bottom.
22. RDMOSU.
23. Tie well back into surface equipment and return to production. Report rates and pressures on CRWS for approx. 5 days during flow back.

*Please report any problems to Lara Kwartin: (W) (303) 830-5708
(H) (303) 343-3973
(Pager) (303) 553-6332*

Amoco Production Company

ENGINEERING CHART

Sheet No. _____ of _____
File _____

Appn _____

Date 10/14-94

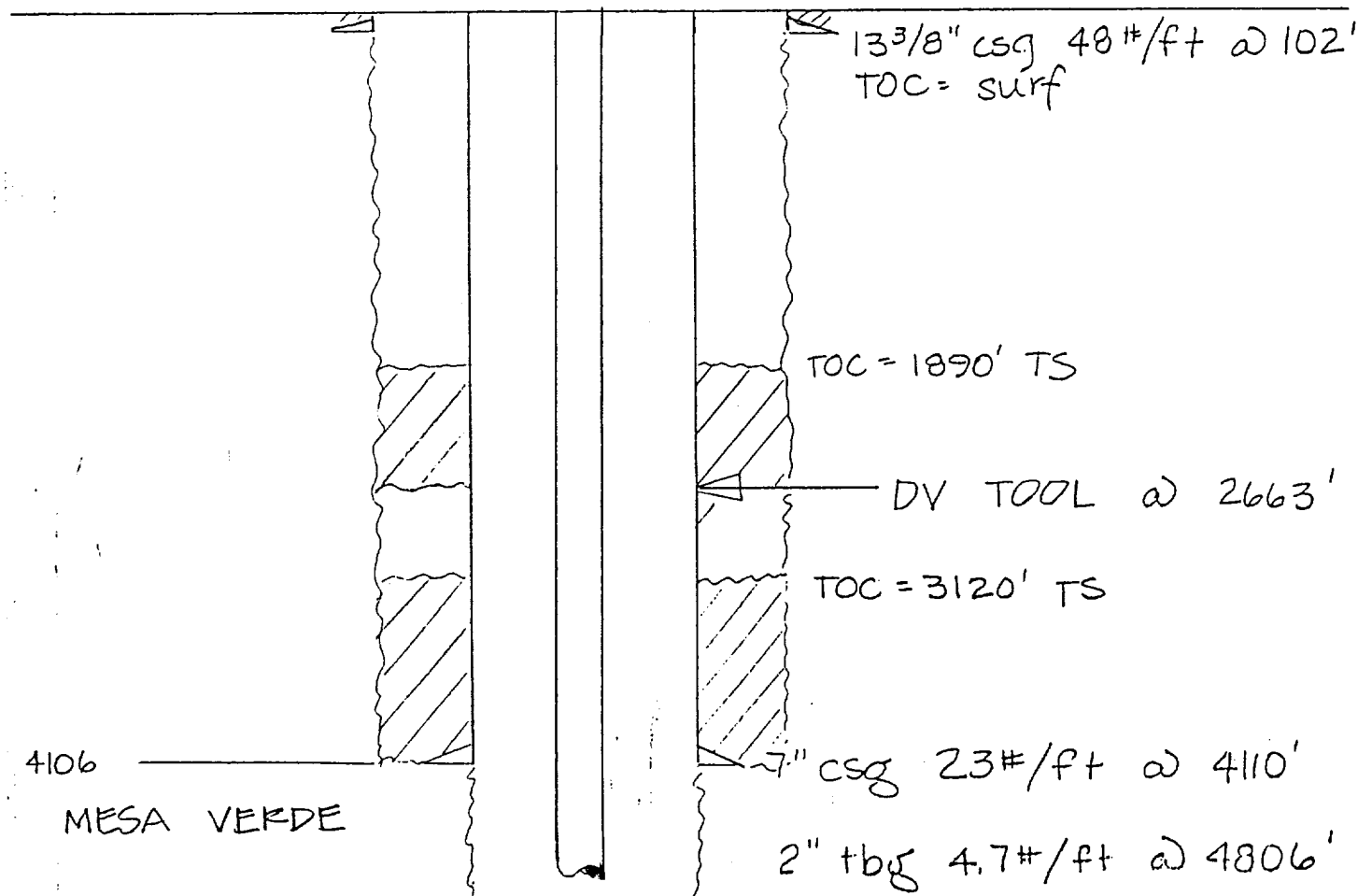
By JNL

SUBJECT RUSSELL A #1

567' FSL 1527' FWL 24N-28N-8W

Completed: 6/51 5937' GR API = 3004507241

Scale 1" = 1000'



PBTD = 4835'
TD = 4850'

FRAC = 2060 qts of Nitroglycerin

UNITED STATES DEPARTMENT OF THE INTERIOR

**BUREAU OF LAND MANAGEMENT
FARMINGTON DISTRICT OFFICE**

1235 La Plata Highway
Farmington, New Mexico 87401

Attachment to Notice of

Re: Plug Back

Intention to Plug Back

Well: **1 Russell A**

CONDITIONS OF APPROVAL

1 **Mike Flaniken** with the Farmington Office is to be notified at least 24 hours before the plug back operations commence (505) 599-8907.

3. The following modifications to your plug back program are to be made (when applicable):

- 1.) Set a CIBP @ approximately 4060' and spot 50' of cement on top. (top of Mesaverde @ 4086', btm. of 7.0" @ 4110')
- 2.) Spot a cement plug from 3440' to 3340' inside the casing plus 50 linear feet excess. (top of Chacra @ 3390')