

UNITED STATES
DEPARTMENT OF THE INTERIOR
BUREAU OF LAND MANAGEMENT

FORM APPROVED
Budget Bureau No. 1004-0135
Expires: March 31, 1993

SUNDRY NOTICES AND REPORTS ON WELLS

Do not use this form for proposals to drill or to deepen or reentry to a different reservoir.

Use "APPLICATION FOR PERMIT - " for such proposals

5. Lease Designation and Serial No.

NM-13860a

6. If Indian, Allottee or Tribe Name

7. If Unit or CA, Agreement Designation

8. Well Name and No.

Russell A #1

9. API Well No.

3004507241

10. Field and Pool, or Exploratory Area

Blanco Mesaverde

11. County or Parish, State

San Juan New Mexico

1. Type of Well
☐ Oil Well ☒ Gas Well ☐ Other

2. Name of Operator

Attention:

Amoco Production Company

Gail M. Jefferson, Rm 1942

3. Address and Telephone No.

P.O. Box 800, Denver, Colorado 80201

(303) 830-6157

4. Location of Well (Footage, Sec., T., R., M., or Survey Description)

567 FSL 1527FWL Sec. 24 T 28N R 8 W Unit N

12. CHECK APPROPRIATE BOX(s) TO INDICATE NATURE OF NOTICE, REPORT, OR OTHER DATA

TYPE OF SUBMISSION

TYPE OF ACTION

- ☒ Notice of Intent
☐ Subsequent Report
☐ Final Abandonment Notice

- ☐ Abandonment
☐ Recompletion
☐ Plugging Back
☐ Casing Repair
☐ Altering Casing
☒ Other SIDETRACK

- ☐ Change of Plans
☐ New Construction
☐ Non-Routine Fracturing
☐ Water Shut-Off
☐ Conversion to Injection
☐ Dispose Water

(Note: Report results of multiple completion on Well Completion or Recompletion Report and Log form.)

13. Describe Proposed or Completed Operations (Clearly state all pertinent details, and give pertinent dates, including estimated date of starting any proposed work. If well is directionally drilled, give subsurface locations and measured and true vertical depths for all markers and zones pertinent to this work.)

Amoco Production Company requested permission to sidetrack the well referenced above on October 18, 1994. Approval was granted by the BLM October 26, 1994. Amoco has not done the sidetrack due to a change in procedures and is now requesting the BLM to cancel the previous approved procedures and is resubmitting our sidetrack request with new procedures which are attached.

If you have any technical questions please contact Lara Kwartin at (303) 830-5708 or myself for any administrative concerns at the telephone number listed above.

Fishing
Peter McNeil

860-3118

RECEIVED
MAR 30 1995

OIL CON. DIV.
DIST. 3

14. I hereby certify that the foregoing is true and correct

Signed

Gail M. Jefferson

Title

Business Assistant

Date

03-21-1995

(This space for Federal or State office use)

Approved by

Title

Date

Conditions of approval, if any:

APPROVED

Title 18 U.S.C. Section 1001, makes it a crime for any person knowingly and willfully to make to any department or agency of the United States any false, fictitious, or fraudulent statements or representations as to any matter within its jurisdiction.

Russell A #1 MV
567' FSL 1527 FWL, Sec. 24N, T28N, R8W
Orig. Comp. 6/51
TD = 4850'
Page 2 of 3

1. Check location for anchors. Install if necessary. Test anchors. Record TP, SICP and SIBHP.
2. Repair location for small 24-hour rig (Big A #19 or equivalent). Utilize roadway, if possible, to stage air compressors and frac units. Will utilize air/mist throughout such that mud pits will be unnecessary. Blow pit must be per BLM requirements and a blooie line w/ignitor necessary. Discuss further with BLM
3. MIRUCT w/air package. NU BOE. Install blooie line per BLM recommendations.
4. If necessary, kill well w/ water. TOH (laying down) with 2" tubing and inspect. Replace any bad joints. If unable to remove tubing free point and back off below 7" casing shoe.
5. Install casing spool to allow landing 4.500" casing and test BOE to 2,000 psi.
6. Pick up rental 3.500" drill string; 6.250" bit, casing scraper and 10 joints of 3.500" HWDP.
7. Pick up casing scraper and work string. Run scraper to 4100'. TOH and set a cement retainer at approximately 4060' and spot cement on top of the ret to at least 3340' to cover the Chacra (Per BLM regs use 50 linear feet excess).
8. Set anchor and whipstock at 3200' and utilize air/mist to cut window.
9. Pick up tricone bit (6 1/4") with a near bit stabilizer. Rig up air package and dry hole. Attempt to increase deviation to approximately 10 degrees by using a build bottom hole assembly.
10. Drill to a TVD of 5200' with air. Contact HES and run a triple suite of logs across the MV (TD to 4000'). Fax log results to Lara Kwartin so she can finalize perforations.
11. Run 4 1/2", 11.6#/ft, K-55, LTC, R-3 casing from surface to TD. Cement per Halliburton recommendations in one stage (for an air drilled hole). Displace with 2% KCl. RDMOCT. Install frac valve on top of tubing head.
12. MIRUSU. Drill out cement to PBTD (4285'). Run a GR/CCL/CBL from PBTD to 4000' to determine if squeeze work will be necessary prior to fracture stimulation. Fax results to Lara Kwartin in Denver so she can determine perms, if necessary, for remedial cementing.

Russell A #1 MV
567' FSL 1527 FWL, Sec. 24N, T28N, R8W
Orig. Comp. 6/51
TD = 4850'
Page 3 of 3

13. Blow well dry with air to ?' (100' above top perf). RU lubricator and perforate the Point Lookout, under balanced with a 3 1/8" casing gun, 2 JSPF, 90 degree phasing 12 1/2 g charges.

PERFORATE POINT LOOKOUT

14. Fracture stimulate according to the attached Point Lookout frac schedule. DO NOT FLOW BACK AT THIS TIME.
15. TIH with a RBP and set above Point Lookout. Cap with sand.
16. Blow dry with air to ?' (100' above top perf).
17. RU lubricator and perforate the Cliff House/Menefee, under balanced with a casing gun, 1 JSPF, 12 1/2 g charges.

PERFORATE CLIFF HOUSE/MENEFEE

18. Fracture stimulate according to the attached Cliff House/Menefee frac schedule.
19. Flow back well until it dies.
20. TOH with RBP.
21. Clean out to PBTD with air. TOH with work string.
22. Once sand entry has ceased, land tubing at depth to be determined with a mule shoe on bottom and a seating nipple one joint off of bottom.
23. RDMOSU.
24. Tie well back into surface equipment and return to production.

Please report any problems to Lara Kwartin:

<i>(W)</i>	<i>(303) 830-5708</i>
<i>(H)</i>	<i>(303) 343-3973</i>
<i>(Pager)</i>	<i>(303) 553-6332</i>

Amoco Production Company

ENGINEERING CHART

Sheet No _____ Of _____
File _____

Appn _____

Date 12-06-94

By JNL

SUBJECT RUSSELL A #1

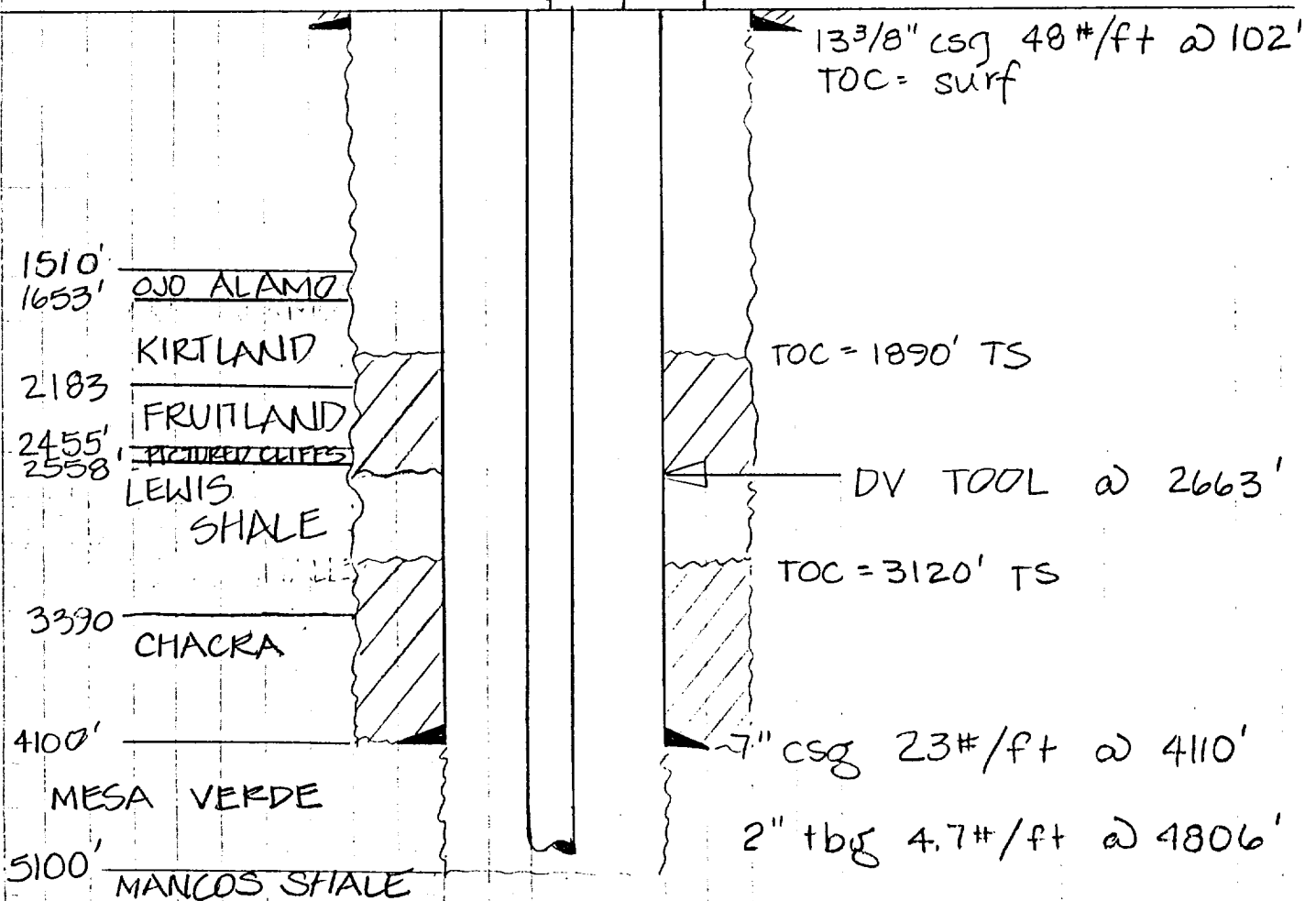
567' FSL 1527' FWL 24N-28N-8W

Completed: 6/51 5937' GR API = 300450724'

Scale 1" = 1000'

361 436 0

BH measured 6/8/93



PBTD = 4835'
TD = 4850'

FRAC = 2060 qts of Nitroglycerin