

UNITED STATES  
DEPARTMENT OF THE INTERIOR  
GEOLOGICAL SURVEY

## APPLICATION FOR PERMIT TO DRILL, DEEPEN, OR PLUG BACK

## 1a. TYPE OF WORK

DRILL ☒DEEPEN ☐PLUG BACK ☐

## b. TYPE OF WELL

OIL  
WELL ☐GAS  
WELL ☒OTHER ☐SINGLE  
ZONE ☒MULTIPLE  
ZONE ☐

## 2. NAME OF OPERATOR

Tenneco Oil Company

## 3. ADDRESS OF OPERATOR

Box 1714 Durango, Colorado

## 4. LOCATION OF WELL (Report location clearly and in accordance with any State requirements.\*)

At surface

790 GNL 1650 FWL

At proposed prod. zone

Unit C

## 14. DISTANCE IN MILES AND DIRECTION FROM NEAREST TOWN OR POST OFFICE\*

## 15. DISTANCE FROM PROPOSED\*

LOCATION TO NEAREST  
PROPERTY OR LEASE LINE, FT.  
(Also to nearest drlg. unit line, if any)

## 16. NO. OF ACRES IN LEASE

320

## 17. NO. OF ACRES ASSIGNED

TO THIS WELL  
320 W/218. DISTANCE FROM PROPOSED LOCATION\*  
TO NEAREST WELL, DRILLING, COMPLETED,  
OR APPLIED FOR, ON THIS LEASE, FT.

## 19. PROPOSED DEPTH

7420

## 20. ROTARY OR CABLE TOOLS

Rotary

## 21. ELEVATIONS (Show whether DF, RT, GR, etc.)

6752 GR

## 22. APPROX. DATE WORK WILL START\*

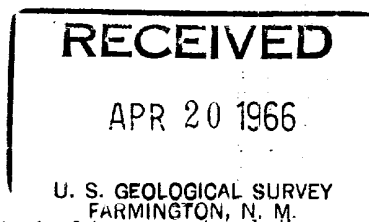
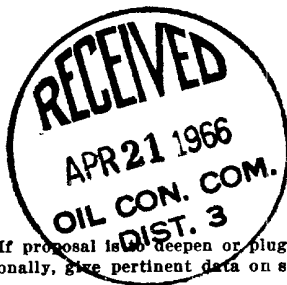
April 29, 1966

## 23.

## PROPOSED CASING AND CEMENTING PROGRAM

SIZE OF HOLE	SIZE OF CASING	WEIGHT PER FOOT	SETTING DEPTH	QUANTITY OF CEMENT
13 3/4	10 3/4	32.75#	200	150 SX
9 5/8	7 5/8	24#	2700	Circulate cement to surface
6 3/4	4 1/2	11.6#	6900 7420	1st stage 235 SX
		10.5#		2nd stage sufficient cement to circulate to surface.

We propose to rig up drill with rotary to approximately TD 7420. Run GR-induction & GR-Density logs. Cement above casing with stage collar set approximately 300' below bottom of Mesaverde. Perforate frac and complete as single Basin Dakota well. Conduct deliverability tests.



IN ABOVE SPACE DESCRIBE PROPOSED PROGRAM: If proposal is to deepen or plug back, give data on present productive zone and proposed new productive zone. If proposal is to drill or deepen directionally, give pertinent data on subsurface locations and measured and true vertical depths. Give blowout preventer program, if any.

## 24.

SIGNED

*Harold C. Nichols*  
Harold C. Nichols

TITLE

Senior Production Clerk

DATE

4-19-66

(This space for Federal or State office use)

PERMIT NO.

APPROVAL DATE

APPROVED BY

TITLE

DATE

CONDITIONS OF APPROVAL, IF ANY:

\*See Instructions On Reverse Side

**NEW MEXICO OIL CONSERVATION COMMISSION  
WELL LOCATION AND ACERAGE DEDICATION PLAT**

All distances must be from the outer boundaries of the Section

Operator <b>TENNECO OIL COMPANY</b>			Lease <b>FLORENCE</b>		Well No. <b>62</b>
Unit Letter <b>C</b>	Section <b>20</b>	Township <b>27 North</b>	Range <b>8 West</b>	County <b>San Juan</b>	
Actual Footage Location of Well: <b>790</b> feet from the <b>North</b> line and <b>1650</b> feet from the <b>West</b> line					
Ground Level Elev. <b>6752' ungraded</b>	Producing Formation <b>San Juan</b>		Poc. <b>San Juan</b>	Dedicated Acreage: <b>380 1/2</b> Acres	

1. Outline the acreage dedicated to the subject well by colored pencil or hatchure marks on the plat below.
2. If more than one lease is dedicated to the well, outline each and identify the ownership thereof (both as to working interest and royalty).
3. If more than one lease of different ownership is dedicated to the well, have the interests of all owners been consolidated by communitization, unitization, force-pooling, etc?  
☐ Yes    ☐ No    If answer is "yes," type of consolidation \_\_\_\_\_

If answer is "no," list the owners and tract descriptions which have actually consolidated. (Use reverse side of this form if necessary.) \_\_\_\_\_

No allowable will be assigned to the well until all interests have been consolidated (by communization, unitization, forced-pooling, or otherwise) or until a non standard unit, eliminating such interests, has been approved by the Commission.

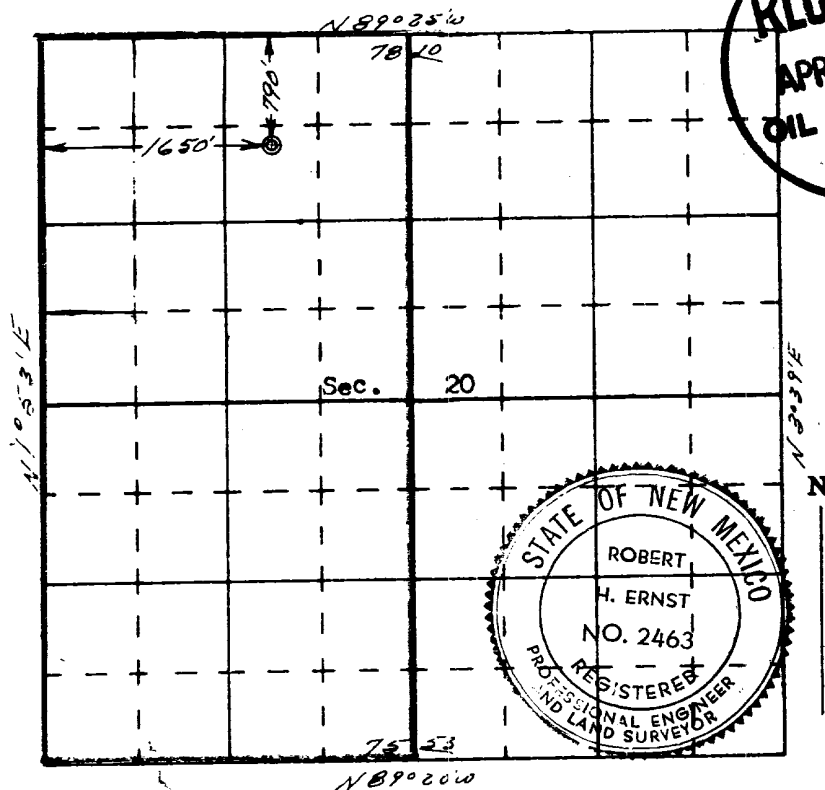
**CERTIFICATION**

I hereby certify that the information contained herein is true and complete to the best of my knowledge and belief.

**Harold C. Nichols**  
Name  
**Senior Production Clerk**  
Position  
**Tenneco Oil**  
Company  
Date **4-19-66**

I hereby certify that the well location shown on this plat was plotted from field notes of actual surveys made by me or under my supervision, and that the same is true and correct to the best of my knowledge and belief.

**15 April 1966**  
Date Surveyed  
*Robert H. Ernst*  
Registered Professional Engineer  
and/or Land Surveyor  
**Robert H. Ernst**  
**N. Mex. PE & LS 2463**  
Certificate No. \_\_\_\_\_



**ERNST ENGINEERING CO  
DURANGO, COLORADO**