

NEW MEXICO OIL CONSERVATION COMMISSION
AMENDED WELL LOCATION AND ACERAGE DEDICATION PLAT TO CORRECT DEDICATED
ACREAGE ONLY

All distances must be from the outer boundaries of the Section

Operator TENNECO OIL COMPANY			Lease FLORENCE		Well No. 62
Unit Letter C	Section 20	Township 27 North	Range 8 West	County San Juan	
Actual Footage Location of Well: 790 feet from the North line and 1650 feet from the West line					
Ground Level Elev. 6752' ungraded	Producing Formation Basin Dakota	Pool Basin Dakota	Dedicated Acreage: 320 1/2 N/2 Acres		

1. Outline the acreage dedicated to the subject well by colored pencil or hatchure marks on the plat below.
2. If more than one lease is dedicated to the well, outline each and identify the ownership thereof (both as to working interest and royalty).
3. If more than one lease of different ownership is dedicated to the well, have the interests of all owners been consolidated by communitization, unitization, force-pooling, etc?

() Yes () No If answer is "yes," type of consolidation

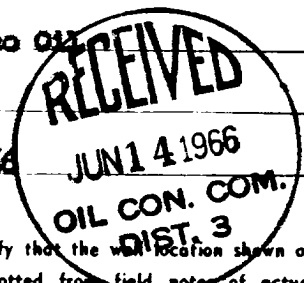
If answer is "no," list the owners and tract descriptions which have actually consolidated. (Use reverse side of this form if necessary.)

No allowable will be assigned to the well until all interests have been consolidated (by communitization, unitization, forced-pooling, or otherwise) or until a non standard unit, eliminating such interests, has been approved by the Commission.

CERTIFICATION

I hereby certify that the information contained herein is true and complete to the best of my knowledge and belief.

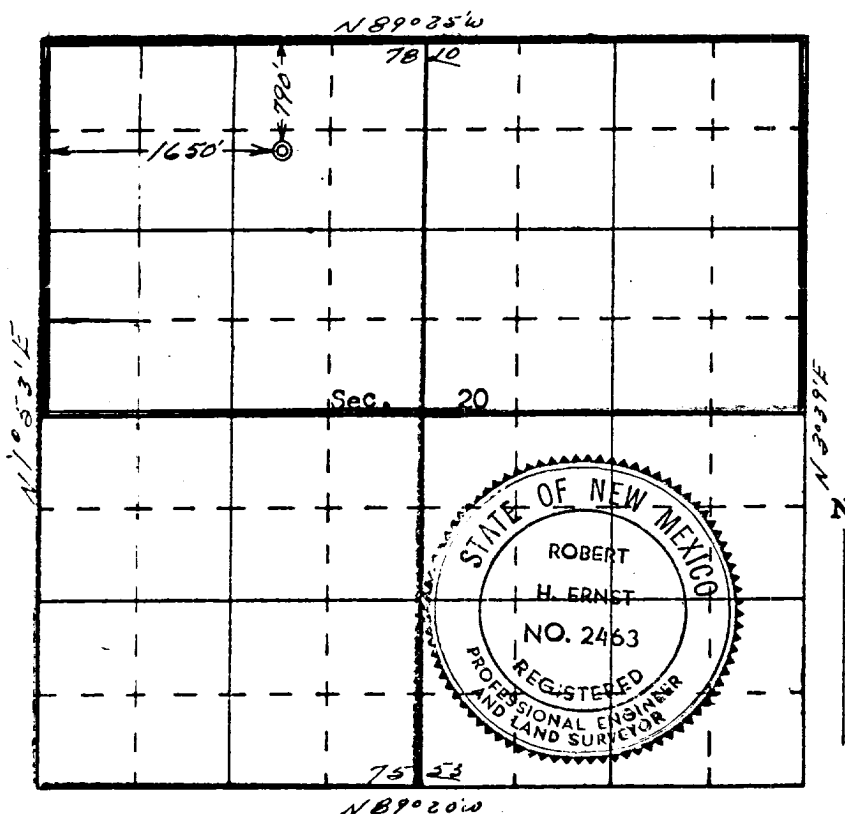
Harold C. Nichols
 Name
Senior Production Clerk
 Position
Tenneco Oil
 Company
 Date **4-19-66**



I hereby certify that the well location shown on this plat was plotted from field notes of actual surveys made by me or under my supervision, and that the same is true and correct to the best of my knowledge and belief.

15 April 1966
 Date Surveyed

 Registered Professional Engineer
 and/or Land Surveyor
Robert H. Ernst
N. Mex. PE & LS 2463
 Certificate No.



ERNST ENGINEERING CO
DURANGO, COLORADO