

UNITED STATES
DEPARTMENT OF THE INTERIOR
GEOLOGICAL SURVEY

APPLICATION FOR PERMIT TO DRILL, DEEPEN, OR PLUG BACK

1a. TYPE OF WORK

DRILL ☒DEEPEN ☐PLUG BACK ☐

b. TYPE OF WELL

OIL
WELL ☐GAS
WELL ☒

OTHER

SINGLE
ZONE ☒MULTIPLE
ZONE ☐

2. NAME OF OPERATOR

Tenneco Oil Company

3. ADDRESS OF OPERATOR

Box 1714 Durango, Colorado

4. LOCATION OF WELL (Report location clearly and in accordance with any State requirements.)*

At surface

1450 FSL 910 FEL

At proposed prod. zone Unit I

14. DISTANCE IN MILES AND DIRECTION FROM NEAREST TOWN OR POST OFFICE*

15. DISTANCE FROM PROPOSED*

LOCATION TO NEAREST
PROPERTY OR LEASE LINE, FT.
(Also to nearest drlg. unit line, if any)

16. NO. OF ACRES IN LEASE

320

18. DISTANCE FROM PROPOSED LOCATION*
TO NEAREST WELL, DRILLING, COMPLETED,
OR APPLIED FOR, ON THIS LEASE, FT.

19. PROPOSED DEPTH

6900

17. NO. OF ACRES ASSIGNED
TO THIS WELL

320 E/2

20. ROTARY OR CABLE TOOLS

Rotary

21. ELEVATIONS (Show whether DF, RT, GR, etc.)

6311 GR

22. APPROX. DATE WORK WILL START*

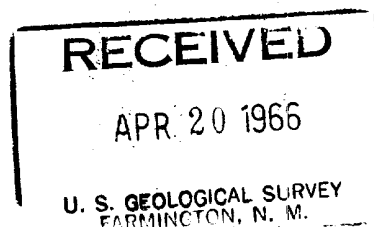
April 29, 1966

23.

PROPOSED CASING AND CEMENTING PROGRAM

SIZE OF HOLE	SIZE OF CASING	WEIGHT PER FOOT	SETTING DEPTH	QUANTITY OF CEMENT
13 3/4	10 3/4	32.75#	200	150 SX
9 7/8	7 5/8	24#	2700	Circulate cement to surface
6 3/4	4 1/2	11.6 & 10.5#	6900	1st stage 235SX
				2nd stage sufficient cement to circulate to surface.

We propose to rig up drill with rotary to approximately TD 6900. Run GR-induction & GR-Density logs. Cement above casing with stage collar set approximately 300' below bottom of Mesaverde. Perforate frac and complete as single Basin Dakota well. Conduct deliverability tests.



IN ABOVE SPACE DESCRIBE PROPOSED PROGRAM: If proposal is to deepen or plug back, give data on present productive zone and proposed new productive zone. If proposal is to drill or deepen directionally, give pertinent data on subsurface locations and measured and true vertical depths. Give blowout preventer program, if any.

24.

SIGNED

Harold C. Nichols
Harold C. Nichols

TITLE

Senior Production Clerk

DATE

4-19-66

(This space for Federal or State office use)

PERMIT NO.

APPROVAL DATE

APPROVED BY

TITLE

DATE

CONDITIONS OF APPROVAL, IF ANY:

*See Instructions On Reverse Side

**NEW MEXICO OIL CONSERVATION COMMISSION
WELL LOCATION AND ACERAGE DEDICATION PLAT**

All distances must be from the outer boundaries of the Section

Operator TEENECO OIL COMPANY		Lease BOLACK "B"		Well No. 1	
Unit Letter I	Section 29	Township 27 North	Range 8 West	County San Juan	
Actual Footage Location of Well					
1450	feet from the	South	line and	910	feet from the East line
6311' ungraded	Producing Formation	Basin Dakota		Basin Dakota	
				Dedicated Acreage	320 1/2 Acres

Outline the acreage dedicated to the subject well by colored pencil or hatchure marks on the plat below.

2. If more than one lease is dedicated to the well, outline each and identify the ownership thereof (both as to working interest and royalty).

3. If more than one lease of different ownership is dedicated to the well, have the interests of all owners been consolidated by communitization, unitization, forced-pooling, etc?

Yes ☐ No ☐ If answer is "yes," type of consolidation

If answer is "no," list the owners and tract descriptions which have actually consolidated. (Use reverse side of this form if necessary)

No allowable well be assigned to the well until all interests have been consolidated (by communitization, unitization, forced-pooling, or otherwise) or until a non standard unit, eliminating such interests, has been approved by the Commission.

CERTIFICATION

I hereby certify that the information contained herein is true and complete to the best of my knowledge and belief.

Harold C. Nichols

Name

Senior Production Clerk

Position

Tenneco Oil

Company

Date

4-19-66

I hereby certify that the well location shown on this plat was plotted from field notes of actual surveys made by me or under my supervision, and that the same is true and correct to the best of my knowledge and belief.

15 April 1966

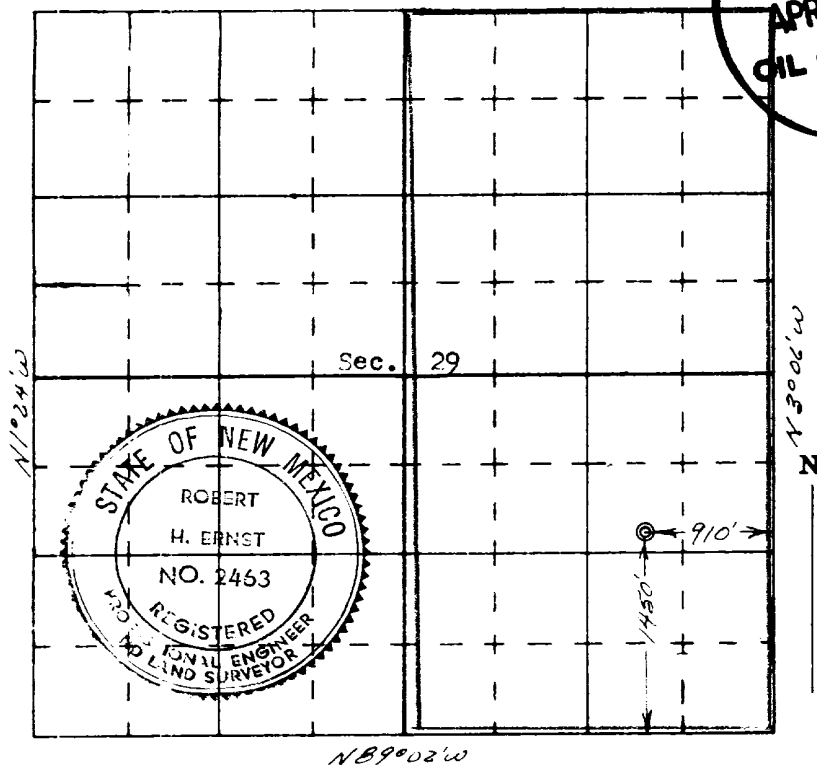
Date Surveyed

Robert H. Ernst
Registered Professional Engineer
and/or Land Surveyor

Robert H. Ernst

N. Mex. PE & LS 2463

Certificate No.



**ERNST ENGINEERING CO
DURANGO, COLORADO**