

*File
Cards & Labels*

SUBMIT IN TRIPLICATE*
(Other instructions on reverse side)

Form approved.
Budget Bureau No. 42-R1425.

**UNITED STATES
DEPARTMENT OF THE INTERIOR
GEOLOGICAL SURVEY**

APPLICATION FOR PERMIT TO DRILL, DEEPEN, OR PLUG BACK

1a. TYPE OF WORK
 DRILL DEEPEN PLUG BACK

b. TYPE OF WELL
 OIL WELL GAS WELL OTHER

SINGLE ZONE MULTIPLE ZONE

2. NAME OF OPERATOR
 Tenneco Oil Company

3. ADDRESS OF OPERATOR
 P. O. Box 1714, Durango, Colorado

4. LOCATION OF WELL (Report location clearly and in accordance with any State requirements.)*
 At surface 1060 FSL 1710 FEL Unit 0
 At proposed prod. zone

14. DISTANCE IN MILES AND DIRECTION FROM NEAREST TOWN OR POST OFFICE*

5. LEASE DESIGNATION AND SERIAL NO.
 NM-03380

6. IF INDIAN, ALLOTTEE OR TRIBE NAME

7. UNIT AGREEMENT NAME

8. FARM OR LEASE NAME
 Florance

9. WELL NO.
 66

10. FIELD AND POOL, OR WILDCAT
 Basin Dakota

11. SEC., T., R., M., OR BLK. AND SURVEY OR AREA
 Sec. 18, 27N - 8W

12. COUNTY OR PARISH 13. STATE
 San Juan New Mexico

15. DISTANCE FROM PROPOSED* LOCATION TO NEAREST PROPERTY OR LEASE LINE, FT. (Also to nearest drig. unit line, if any)

16. NO. OF ACRES IN LEASE
 320

17. NO. OF ACRES ASSIGNED TO THIS WELL
 320 E/2

18. DISTANCE FROM PROPOSED LOCATION* TO NEAREST WELL, DRILLING, COMPLETED, OR APPLIED FOR, ON THIS LEASE, FT.

19. PROPOSED DEPTH
 6950

20. ROTARY OR CABLE TOOLS
 Rotary

21. ELEVATIONS (Show whether DF, RT, GR, etc.)
 6279' Gr.

22. APPROX. DATE WORK WILL START*
 Sept. 2, 1966

23. PROPOSED CASING AND CEMENTING PROGRAM

SIZE OF HOLE	SIZE OF CASING	WEIGHT PER FOOT	SETTING DEPTH	QUANTITY OF CEMENT
12 1/4"	8 5/8"	20 & 24#	400	Cement to surface
7 7/8"	4 1/2"	10.5 & 11.6#	6950	1st stage 235 sx 2nd stage Cement to surface

We plan to drill to approximate TD 6950. Run casing as shown above w/stage collar set approximately 300' below bottom of Mesaverde. WOC. Run IES and GR Density logs. Perforate and frac and complete as a single Basin Dakota gas well. Conduct deliverability test. Run 2 3/8" EUE.

RECEIVED
 SEP 3 1966
 OIL CON. COM.
 DIST. 3

RECEIVED
 SEP 2 1966
 U. S. GEOLOGICAL SURVEY
 FARMINGTON, N. M.

IN ABOVE SPACE DESCRIBE PROPOSED PROGRAM: If proposal is to deepen or plug back, give data on present productive zone and proposed new productive zone. If proposal is to drill or deepen directionally, give pertinent data on subsurface locations and measured and true vertical depths. Give blowout preventer program, if any.

24. SIGNED Harold C. Nichols TITLE Senior Production Clerk DATE Sept. 1, 1966
 SIGNED Harold C. Nichols

PERMIT NO. _____ APPROVAL DATE _____

APPROVED BY CM TITLE _____ DATE _____

CONDITIONS OF APPROVAL, IF ANY:
 DISTRIBUTION:
 5-USGS
 1-Continental
 1-File

*See Instructions On Reverse Side

1460-531
 1460-532
 1460-533
 1460-534
 1460-535
 1460-536
 1460-537
 1460-538
 1460-539
 1460-540
 1460-541
 1460-542
 1460-543
 1460-544
 1460-545
 1460-546
 1460-547
 1460-548
 1460-549
 1460-550

**NEW MEXICO OIL CONSERVATION COMMISSION
WELL LOCATION AND ACERAGE DEDICATION PLAT**

All distances must be from the outer boundaries of the Section

Operator TENNECO OIL COMPANY		Lease FLORANCE		Well No. 66	
Unit Letter 0	Section 18	Township 27 North	Range 8 West	County San Juan	
Actual Footage Location of Well:					
1060 feet from the South line and		1710 feet from the East line			
Ground Level Elev. 6279' ungraded	Producing Formation Basin Dakota		Pool Basin Dakota	Dedicated Acreage: E/2 320 Acres	

1. Outline the acreage dedicated to the subject well by colored pencil or hachure marks on the plat below.
2. If more than one lease is dedicated to the well, outline each and identify the ownership thereof (both as to working interest and royalty).
3. If more than one lease of different ownership is dedicated to the well, have the interests of all owners been consolidated by communitization, unitization, force-pooling, etc?
 Yes () No () If answer is "yes," type of consolidation

If answer is "no," list the owners and tract descriptions which have actually consolidated. (Use reverse side of this form if necessary)

No allowable will be assigned to the well until all interests have been consolidated (by communitization, unitization, forced-pooling, or otherwise) or until a non standard unit, eliminating such interests, has been approved by the Commission.



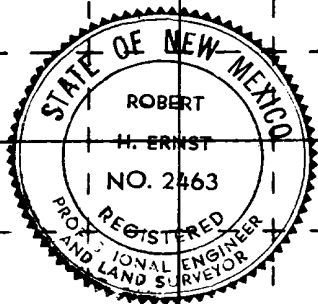
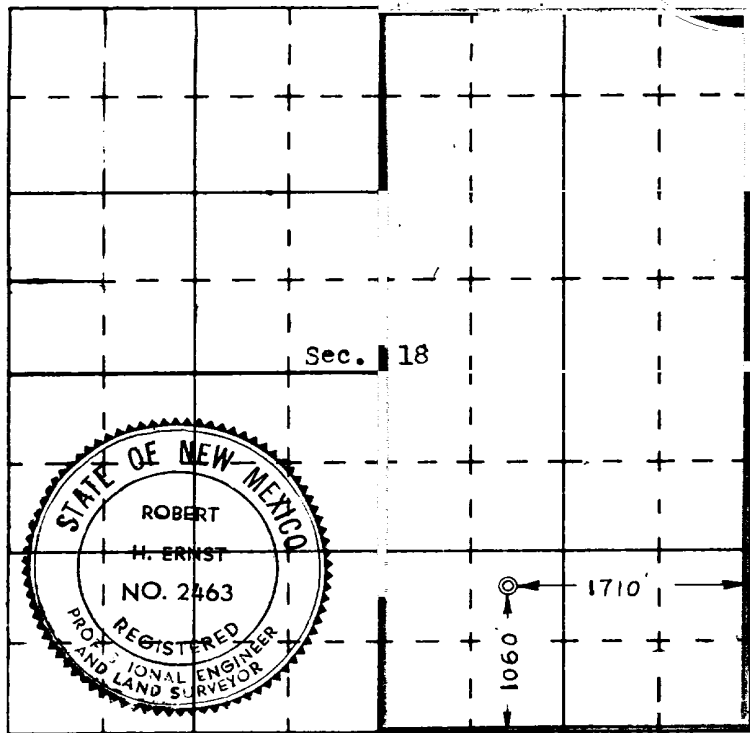
CERTIFICATION

I hereby certify that the information contained herein is true and complete to the best of my knowledge and belief.

Harold C. Nichols
Name
Harold C. Nichols
Position
Senior Production Clerk
Company
Tenneco Oil Company
Date
September 1, 1966

I hereby certify that the well location shown on this plat was plotted from field notes of actual surveys made by me or under my supervision, and that the same is true and correct to the best of my knowledge and belief.

14 July 1966
Date Surveyed
Robert H. Ernst
Registered Professional Engineer
and/or Land Surveyor
Robert H. Ernst
N. Mex. PE & LS 2463
 Certificate No. _____



Ernst Engineering Co.
Durango, Colorado