

UNITED STATES  
DEPARTMENT OF THE INTERIOR  
GEOLOGICAL SURVEY

NM 04208-1

APPLICATION FOR PERMIT TO DRILL, DEEPEN, OR PLUG BACK

1a. TYPE OF WORK  
DRILL ☒ DEEPEN ☐ PLUG BACK ☐

b. TYPE OF WELL  
OIL WELL ☐ GAS WELL ☒ OTHER ☐ SINGLE ZONE ☒ MULTIPLE ZONE ☐

2. NAME OF OPERATOR  
Tenneco Oil Company

3. ADDRESS OF OPERATOR  
P. O. Box 1714, Durango, Colorado 81301

4. LOCATION OF WELL (Report location clearly and in accordance with any State requirements.)\*  
At surface 990' FSL 990' FWL  
At proposed prod. zone 7310 1857 Unit Letter "M" K

14. DISTANCE IN MILES AND DIRECTION FROM NEAREST TOWN OR POST OFFICE\*

16. DISTANCE FROM PROPOSED\* LOCATION TO NEAREST PROPERTY OR LEASE LINE, FT. (Also to nearest drlg. unit line, if any)

16. NO. OF ACRES IN LEASE  
320

18. DISTANCE FROM PROPOSED LOCATION\* TO NEAREST WELL, DRILLING, COMPLETED, OR APPLIED FOR, ON THIS LEASE, FT.

19. PROPOSED DEPTH  
6855

21. ELEVATIONS (Show whether DF, RT, GR, etc.)

5855  
5917 GR

23. PROPOSED CASING AND CEMENTING PROGRAM

SIZE OF HOLE	SIZE OF CASING	WEIGHT PER FOOT	SETTING DEPTH	QUANTITY OF CEMENT
15"	10-3/4"	32#	450	Cement to surface
9-7/8"	8-5/8"	26.4#	3100	Cement to surface
6-3/4"	4-1/2"	10.5 & 11.6#	6855	1st stage 150 sx. 2nd stage 150 sx.

We plan to drill to approximate T.D. 6855. Ran IES & GRD Logs. Run casing as shown above, w/stage collar set approximately 300' below bottom of Mesaverde WOC. Perf and Frac and run 2-3/8" EUE tubing and conduct deliverability tests.

RECEIVED

OCT 11 1966

U. S. GEOLOGICAL SURVEY  
FARMINGTON, N. M.

OIL CON. COM.  
DIST. 3

IN ABOVE SPACE DESCRIBE PROPOSED PROGRAM: If proposal is to deepen or plug back, give data on present productive zone and proposed new productive zone. If proposal is to drill or deepen directionally, give pertinent data on subsurface locations and measured and true vertical depths. Give blowout preventer program, if any.

24. SIGNED Harold C. Nichols TITLE Senior Production Clerk DATE October 10, 1966  
Harold C. Nichols

(This space for Federal or State office use)

PERMIT NO. \_\_\_\_\_ APPROVAL DATE \_\_\_\_\_

APPROVED BY Cub TITLE \_\_\_\_\_ DATE \_\_\_\_\_

CONDITIONS OF APPROVAL, IF ANY:

5 copies USGS, Frmg 1 Cont., 1 TOC File

\*See Instructions On Reverse Side

NEW MEXICO OIL CONSERVATION COMMISSION  
WELL LOCATION AND ACERAGE DEDICATION PLAT

All distances must be from the outer boundaries of the Section

Operator <b>TENNESCO OIL COMPANY</b>		Lease <b>WARREN COM</b>		Well No <b>1</b>	
Unit Letter <b>K</b>	Section <b>13</b>	Township <b>28 North</b>	Range <b>9 West</b>	County <b>San Juan</b>	
Actual Footage Location of Well: <b>2310</b> feet from the <b>South</b> line and <b>1850</b> feet from the <b>west</b> line					
Ground Level Elev. <b>5852' ungraded</b>		Producing Formation <b>Basin Dakota</b>		Dedicated Acreage <b>320 W/2 Acres</b>	

1. Outline the acreage dedicated to the subject well by colored pencil or hatchure marks on the plat below.
2. If more than one lease is dedicated to the well outline each and identify the ownership thereof (both as to working interest and royalty).
3. If more than one lease of different ownership is dedicated to the well, have the interests of all owners been consolidated by communitization, unitization, force-pooling, etc?

☐ Yes ☐ No If answer is "yes," type of consolidation .....

If answer is "no," list the owners and tract descriptions which have actually consolidated. (Use reverse side of this form if necessary.) .....

No allowable will be assigned to the well until all interests have been consolidated (by communitization, unitization, forced-pooling, or otherwise) or until a non standard unit, eliminating such interests, has been approved by the Commission.

## CERTIFICATION

I hereby certify that the information contained herein is true and complete to the best of my knowledge and belief.

Name **Harold C. Nichols**  
Senior Production Clerk  
Company **Tenneco Oil Company**  
Date **October 18, 1966**

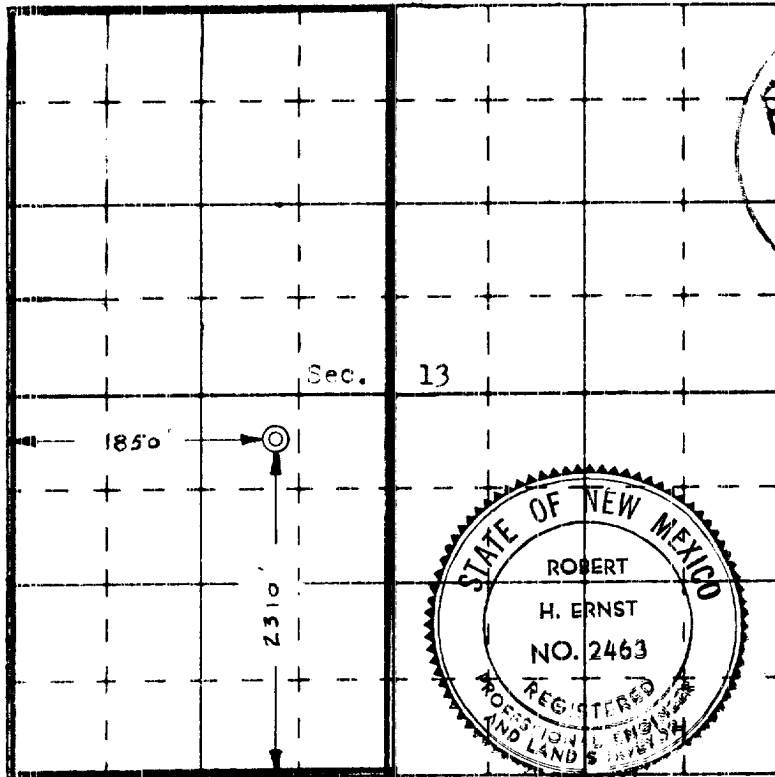
I hereby certify that the well location shown on this plat was plotted from field notes of actual surveys made by me or under my supervision, and that the same is true and correct to the best of my knowledge and belief.

**15 October 1966**  
Date Surveyed

*Robert H. Ernst*  
Registered Professional Engineer  
and/or Land Surveyor

**Robert H. Ernst**  
**N. Mex. PE & LS 2463**

Certificate No. ....



**ERNST ENGINEERING CO.**  
**DURANGO, COLORADO**

NOTE: Location Moved (Navajo Canal Project in Area) per request of USGS