

UNITED STATES
DEPARTMENT OF THE INTERIOR
GEOLOGICAL SURVEY30-843-20169
5. LEASE DESIGNATION AND SERIAL NO.

SF 079596

6. IF INDIAN, ALLOTTEE OR TRIBE NAME

7. UNIT AGREEMENT NAME

8. FARM OR LEASE NAME

C. M. Morris Com.

9. WELL NO.

#1

10. FIELD AND POOL, OR WILDCAT

Basin Dakota

11. SEC., T., R., M., OR BLK.
AND SURVEY OR AREA

Sec 10, T-27-N, E-10-W

12. COUNTY OR PARISH

San Juna

13. STATE
New Mexico

APPLICATION FOR PERMIT TO DRILL, DEEPEN, OR PLUG BACK

1a. TYPE OF WORK

DRILL ☒DEEPEN ☐PLUG BACK ☐

b. TYPE OF WELL

OIL
WELL ☐GAS
WELL ☒

OTHER

SINGLE
ZONE ☒MULTIPLE
ZONE ☐

2. NAME OF OPERATOR

Tenneco Oil Company

3. ADDRESS OF OPERATOR

P. O. Box 1714, Durango, Colorado

4. LOCATION OF WELL (Report location clearly and in accordance with any State requirements.)*

At surface

1745 FSL 1475 FEL

At proposed prod. zone

Unit J

14. DISTANCE IN MILES AND DIRECTION FROM NEAREST TOWN OR POST OFFICE*

15. DISTANCE FROM PROPOSED*

LOCATION TO NEAREST
PROPERTY OR LEASE LINE, FT.
(Also to nearest drlg. unit line, if any)

16. NO. OF ACRES IN LEASE

320

17. NO. OF ACRES ASSIGNED

TO THIS WELL
32018. DISTANCE FROM PROPOSED LOCATION*
TO NEAREST WELL, DRILLING, COMPLETED,
OR APPLIED FOR, ON THIS LEASE, FT.

19. PROPOSED DEPTH

6740

20. ROTARY OR CABLE TOOLS

Rotary

21. ELEVATIONS (Show whether DF, RT, GR, etc.)

6278 Gr.

22. APPROX. DATE WORK WILL START*

23. PROPOSED CASING AND CEMENTING PROGRAM

SIZE OF HOLE	SIZE OF CASING	WEIGHT PER FOOT	SETTING DEPTH	QUANTITY OF CEMENT
12-1/4"	8-5/8"	20# & 24#	150	200 sx
7-7/8"	5-1/2"	14 & 15.5#	6740	150 sx first stage
				100 sx second stage

We plan to drill to an approximate T.D. of 6740. Run casing as shown above. Log, perforate and frac and complete as gas well.



IN ABOVE SPACE DESCRIBE PROPOSED PROGRAM: If proposal is to deepen or plug back, give data on present productive zone and proposed new productive zone. If proposal is to drill or deepen directionally, give pertinent data on subsurface locations and measured and true vertical depths. Give blowout preventer program, if any.

24.

SIGNED

M. K. Wagner
M. K. Wagner

TITLE

DATE 10/6/67

(This space for Federal or State office use)

PERMIT NO.

APPROVAL DATE

APPROVED BY

24

TITLE

CONDITIONS OF APPROVAL, IF ANY:

5 USGS

1 Cont.

1 EPNG

1 Pan Am

1 Mobil Oil Co.

*See Instructions On Reverse Side

RECEIVED

OCT 9 1967

U. S. GEOLOGICAL SURVEY
FARMING

**NEW MEXICO OIL CONSERVATION COMMISSION
WELL LOCATION AND ACERAGE DEDICATION PLAT**

All distances must be from the outer boundaries of the Section

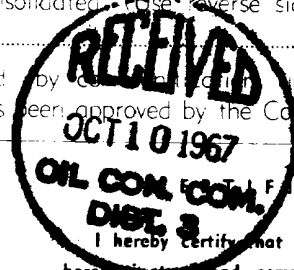
Operator TENNECO OIL COMPANY			Lease C. M. MORRIS COM.		Well No. 1
Unit Letter J	Section 10	Township 27 North	Range 10 West	County San Juan	
Actual Entrance Location of Well:					
1745	feet from the	South	line and	1475	feet from the East line
Ground Level Elev.	Producing Formation		Pool	Dedicated Acreage	E/2
6278' ungraded	Basin Dakota		Basin Dakota	320	Acres

1. Outline the acreage dedicated to the subject well by colored pencil or hatchure marks on the plat below.
2. If more than one lease is dedicated to the well, outline each and identify the ownership thereof (both as to working interest and royalty).
3. If more than one lease of different ownership is dedicated to the well, have the interests of all owners been consolidated by communitization, unitization, force-pooling, etc?

☒ **X** Yes ☐ No If answer is "yes," type of consolidation **PRESENTLY BEING COMMUNITIZED**

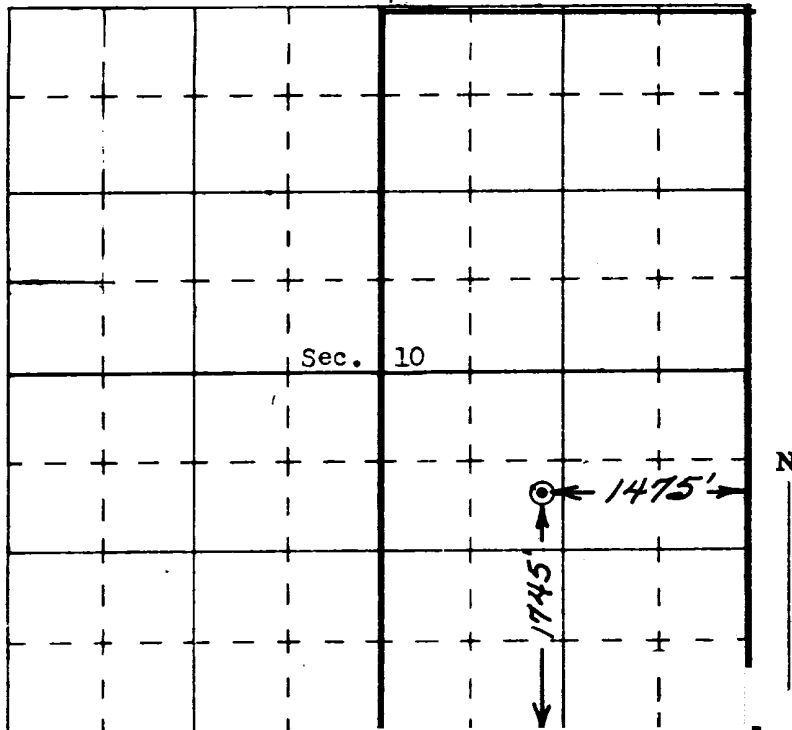
If answer is "no," list the owners and tract descriptions which have actually consolidated. (Use reverse side of this form if necessary.)

No allowable will be assigned to the well until all interests have been consolidated by communitization, unitization, forced-pooling, or otherwise) or until a non standard unit, eliminating such interests, has been approved by the Commission.



I hereby certify that the information contained herein is true and complete to the best of my knowledge and belief.

Name M. K. Wagner
 Position _____
 Company Tenneco Oil Company
 Date October 6, 1967

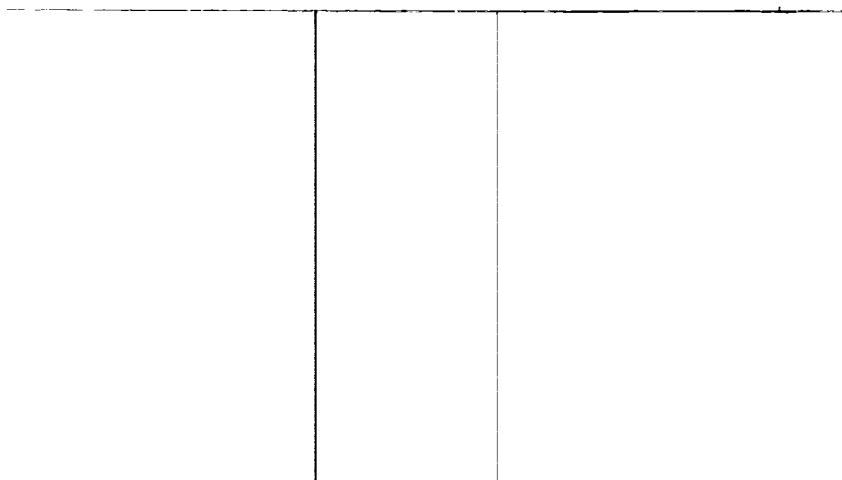


I hereby certify that the well location shown on this plat was plotted from field notes of actual surveys made by me or under my supervision, and that the same is true and correct to the best of my knowledge and belief.

Date Surveyed 4 October 1967
Robert H. Ernst
 Registered Professional Engineer
 and/or Land Surveyor

Ernst Engineering Co.
Durango, Colorado

Robert H. Ernst
N. Mex. PE & LS 2463
 Certificate No. _____



A hand-drawn diagram consisting of a horizontal line with two vertical lines extending downwards from it, forming a T-shape. The horizontal line is positioned approximately two-thirds of the way down the page. The two vertical lines are parallel and extend from the horizontal line to the bottom edge of the page. There are some faint, illegible markings in the top left corner of the page.

--	--	--