

5 USES
2 EPNG
1 Cont.
1 McHugh
1 FileSUBMIT IN TRIPLICATE*
(Other instructions on
reverse side)Form approved.
Budget Bureau No. 42-R1425.UNITED STATES
DEPARTMENT OF THE INTERIOR
GEOLOGICAL SURVEY

APPLICATION FOR PERMIT TO DRILL, DEEPEN, OR PLUG BACK

1a. TYPE OF WORK

DRILL ☒DEEPEN ☐PLUG BACK ☐

b. TYPE OF WELL

OIL
WELL ☐GAS
WELL ☒

OTHER

SINGLE
ZONE ☒MULTIPLE
ZONE ☐

2. NAME OF OPERATOR

Jerome P. McHugh

3. ADDRESS OF OPERATOR

930 Petroleum Club Bldg., Denver, Colorado

4. LOCATION OF WELL (Report location clearly and in accordance with any State requirement)

At surface

790' fs1 800' fw1

At proposed prod. zone

Same as ab ove

14. DISTANCE IN MILES AND DIRECTION FROM NEAREST TOWN OR POST OFFICE*

10 miles east Blanco, New Mexico

15. DISTANCE FROM PROPOSED*

LOCATION TO NEAREST

PROPERTY OR LEASE LINE, FT.

(Also to nearest drlg. unit line, if any)

790' 790'

18. DISTANCE FROM PROPOSED LOCATION*

TO NEAREST WELL, DRILLING, COMPLETED,
OR APPLIED FOR, ON THIS LEASE, FT.

16. NO. OF ACRES IN

16. NO. OF ACRES IN

16. NO. OF ACRES IN

16. NO. OF ACRES IN

16. NO. OF ACRES IN

16. NO. OF ACRES IN

16. NO. OF ACRES IN

16. NO. OF ACRES IN

16. NO. OF ACRES IN

16. NO. OF ACRES IN

16. NO. OF ACRES IN

16. NO. OF ACRES IN

16. NO. OF ACRES IN

16. NO. OF ACRES IN

16. NO. OF ACRES IN

16. NO. OF ACRES IN

16. NO. OF ACRES IN

16. NO. OF ACRES IN

16. NO. OF ACRES IN

16. NO. OF ACRES IN

16. NO. OF ACRES IN

16. NO. OF ACRES IN

16. NO. OF ACRES IN

16. NO. OF ACRES IN

16. NO. OF ACRES IN

16. NO. OF ACRES IN

16. NO. OF ACRES IN

16. NO. OF ACRES IN

16. NO. OF ACRES IN

16. NO. OF ACRES IN

16. NO. OF ACRES IN

16. NO. OF ACRES IN

16. NO. OF ACRES IN

16. NO. OF ACRES IN

16. NO. OF ACRES IN

16. NO. OF ACRES IN

16. NO. OF ACRES IN

16. NO. OF ACRES IN

16. NO. OF ACRES IN

16. NO. OF ACRES IN

16. NO. OF ACRES IN

16. NO. OF ACRES IN

16. NO. OF ACRES IN

16. NO. OF ACRES IN

16. NO. OF ACRES IN

16. NO. OF ACRES IN

16. NO. OF ACRES IN

16. NO. OF ACRES IN

16. NO. OF ACRES IN

16. NO. OF ACRES IN

16. NO. OF ACRES IN

16. NO. OF ACRES IN

16. NO. OF ACRES IN

16. NO. OF ACRES IN

16. NO. OF ACRES IN

16. NO. OF ACRES IN

16. NO. OF ACRES IN

16. NO. OF ACRES IN

16. NO. OF ACRES IN

16. NO. OF ACRES IN

16. NO. OF ACRES IN

16. NO. OF ACRES IN

16. NO. OF ACRES IN

16. NO. OF ACRES IN

16. NO. OF ACRES IN

16. NO. OF ACRES IN

16. NO. OF ACRES IN

16. NO. OF ACRES IN

16. NO. OF ACRES IN

16. NO. OF ACRES IN

16. NO. OF ACRES IN

16. NO. OF ACRES IN

16. NO. OF ACRES IN

16. NO. OF ACRES IN

16. NO. OF ACRES IN

16. NO. OF ACRES IN

5. LEASE DESIGNATION AND SERIAL NO.

SF 978390-A

6. IF INDIAN, ALLOTTEE OR TRIBE NAME

7. UNIT AGREEMENT NAME

8. FARM OR LEASE NAME

Price

9. WELL NO.

1

10. FIELD AND POOL, OR WILDCAT

Basin Dakota

11. SEC., T., R., M., OR BLK.
AND SURVEY OR AREA

Sec. 12-T28N-R8W NMPH

12. COUNTY OR PARISH

San Juan

13. STATE

N. M.

15. DISTANCE FROM PROPOSED*

LOCATION TO NEAREST

PROPERTY OR LEASE LINE, FT.

(Also to nearest drlg. unit line, if any)

790' 790'

18. DISTANCE FROM PROPOSED LOCATION*

TO NEAREST WELL, DRILLING, COMPLETED,
OR APPLIED FOR, ON THIS LEASE, FT.

16. NO. OF ACRES IN

16. NO. OF ACRES IN

16. NO. OF ACRES IN

16. NO. OF ACRES IN

16. NO. OF ACRES IN

16. NO. OF ACRES IN

16. NO. OF ACRES IN

16. NO. OF ACRES IN

16. NO. OF ACRES IN

16. NO. OF ACRES IN

16. NO. OF ACRES IN

16. NO. OF ACRES IN

16. NO. OF ACRES IN

16. NO. OF ACRES IN

16. NO. OF ACRES IN

16. NO. OF ACRES IN

16. NO. OF ACRES IN

16. NO. OF ACRES IN

16. NO. OF ACRES IN

16. NO. OF ACRES IN

16. NO. OF ACRES IN

16. NO. OF ACRES IN

16. NO. OF ACRES IN

16. NO. OF ACRES IN

16. NO. OF ACRES IN

16. NO. OF ACRES IN

16. NO. OF ACRES IN

16. NO. OF ACRES IN

16. NO. OF ACRES IN

16. NO. OF ACRES IN

16. NO. OF ACRES IN

16. NO. OF ACRES IN

16. NO. OF ACRES IN

16. NO. OF ACRES IN

16. NO. OF ACRES IN

16. NO. OF ACRES IN

16. NO. OF ACRES IN

16. NO. OF ACRES IN

16. NO. OF ACRES IN

16. NO. OF ACRES IN

16. NO. OF ACRES IN

16. NO. OF ACRES IN

16. NO. OF ACRES IN

16. NO. OF ACRES IN

16. NO. OF ACRES IN

16. NO. OF ACRES IN

16. NO. OF ACRES IN

16. NO. OF ACRES IN

16. NO. OF ACRES IN

16. NO. OF ACRES IN

16. NO. OF ACRES IN

16. NO. OF ACRES IN

16. NO. OF ACRES IN

16. NO. OF ACRES IN

16. NO. OF ACRES IN

16. NO. OF ACRES IN

16. NO. OF ACRES IN

16. NO. OF ACRES IN

16. NO. OF ACRES IN

16. NO. OF ACRES IN

16. NO. OF ACRES IN

16. NO. OF ACRES IN

16. NO. OF ACRES IN

16. NO. OF ACRES IN

16. NO. OF ACRES IN

16. NO. OF ACRES IN

16. NO. OF ACRES IN

16. NO. OF ACRES IN

16. NO. OF ACRES IN

16. NO. OF ACRES IN

16. NO. OF ACRES IN

16. NO. OF ACRES IN

16. NO. OF ACRES IN

16. NO. OF ACRES IN

16. NO. OF ACRES IN

16. NO. OF ACRES IN

21. ELEVATIONS (Show whether DF, RT, GR, etc.)

6287 Gr. 6290 RKB

22. APPROX. DATE WORK WILL START*

10-1-67

23.

PROPOSED CASING AND CEMENTING PROGRAM

SIZE OF HOLE	SIZE OF CASING	WEIGHT PER FOOT	SETTING DEPTH	QUANTITY OF CEMENT
12 1/4"	9 5/8"	32.30#	200'	150 cu. ft.
8 3/4"	7"	20#	3050'	600 cu. ft.
6 1/4"	4 1/2"	10.5#	7350'	500 cu. ft.

Plan to spud a 12 1/4" hole and drill w/mud to 200' and set 9 5/8" surface csg. cemented to surface.

An 8 3/4" hole will then be drilled to a depth of 3050' w/mud and 7" csg. set and cemented to surface.

A 6 1/4" hole will then be drilled w/gas to a depth of approximately 7350' and 4 1/2" csg. run and cemented w/500 cu. ft. of cement.

The Dakota formation will then be selectively perf. and S.W.F.

The well will then be "cleaned up" and tbq. run.

IN ABOVE SPACE DESCRIBE PROPOSED PROGRAM: If proposal is to deepen or plug back, give data on present productive zone and proposed new productive zone. If proposal is to drill or deepen directionally, give pertinent data on subsurface locations and measured and true vertical depths. Give blowout preventer program, if any.

24.

Original signed by T. A. Dugan

SIGNED

TITLE

Consulting Engineer

DATE

9/27/67

(This space for Federal or State office use)

PERMIT NO.

APPROVAL DATE

APPROVED BY

TITLE

CONDITIONS OF APPROVAL, IF ANY:

RECEIVED

DATE

OCT 1 1967

U. S. GEOLOGICAL SURVEY
FARMINGTON, N. M.

*See Instructions On Reverse Side

Instructions

General: This form is designed for submitting proposals to perform certain well operations, as indicated, on all types of lands and leases for appropriate action by either a Federal or a State agency, or both, pursuant to applicable Federal and/or State laws and regulations. Any necessary special instructions concerning the use of this form and the number of copies to be submitted, particularly with regard to local, area, or regional procedures and practices, either are shown below or will be issued by, or may be obtained from, the local Federal and/or State office.

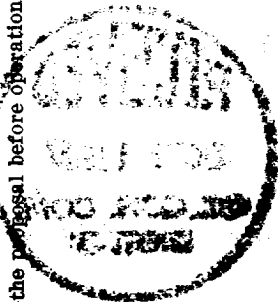
Item 1: If the proposal is to redrill to the same reservoir at a different subsurface location or to a new reservoir, use this form with appropriate notations. Consult applicable State or Federal regulations concerning subsequent work proposals or reports on the well.

Item 4: If there are no applicable State requirements, locations on Federal or Indian land should be described in accordance with Federal requirements. Consult local State or Federal office for specific instructions.

Item 14: Needed only when location of well cannot readily be found by road from the land or lease description. A plat, or plats, separate or on this reverse side, showing the roads to, and the surveyed location of, the well, and any other required information, should be furnished when required by Federal or State agency offices.

Items 15 and 18: If well is to be, or has been directionally drilled, give distances for subsurface location of hole in appropriate or objective production zone.

Item 22: Consult applicable Federal or State regulations, or appropriate officials, concerning approval of the proposal before operations are started.



**NEW MEXICO OIL CONSERVATION COMMISSION
WELL LOCATION AND ACREAGE DEDICATION PLAT**

Form C-102
Supersedes C-128
Effective 1-4-65

All distances must be from the outer boundaries of the Section.

Operator Jerome P. McHugh			Lease Price		Well No. 1
Unit Letter M	Section 12	Township 28 North	Range 8 West	County San Juan	
Actual Footage Location of Well: 790 feet from the South line and 800 feet from the West line					
Ground Level Elev. 6287	Producing Formation Dakota	Pool Basin Dakota		Dedicated Acreage: 327.87 Acres 224.72	

1. Outline the acreage dedicated to the subject well by colored pencil or hatchure marks on the plat below.
2. If more than one lease is dedicated to the well, outline each and identify the ownership thereof (both as to working interest and royalty).
3. If more than one lease of different ownership is dedicated to the well, have the interests of all owners been consolidated by communitization, unitization, force-pooling, etc?

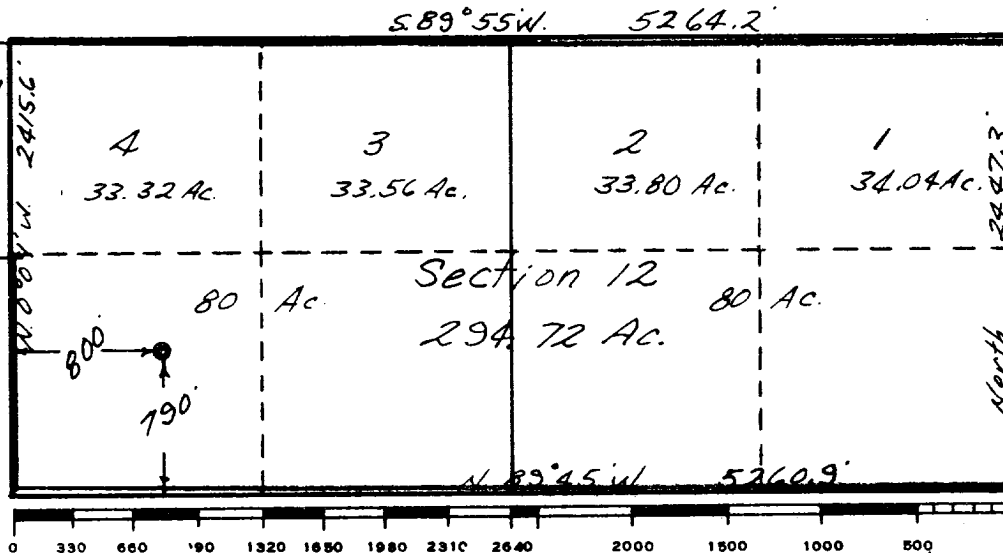
☐ Yes ☐ No If answer is "yes," type of consolidation _____

If answer is "no," list the owners and tract descriptions which have actually been consolidated. (Use reverse side of this form if necessary.) _____

No allowable will be assigned to the well until all interests have been consolidated (by communitization, unitization, forced-pooling, or otherwise) or until a non-standard unit, eliminating such interests, has been approved by the Commission.



Lot #1 Sec. 11 included in proration Unit



CERTIFICATION

I hereby certify that the information contained herein is true and complete to the best of my knowledge and belief.

Name
Original signed by **T. A. Dugan**

Position
Consulting Engineer

Company
Jerome P. McHugh

Date
9-27-67

I hereby certify that the well location shown on this plat was plotted from field notes of actual surveys made by me or under my supervision, and that the same is true and correct to the best of my knowledge and belief.

L. POTEET
REGISTERED
Surveyor

Date Surveyed
Sept 23, 1967

Registered Professional Engineer and Land Surveyor
3084

Certificate No.
3084